

PSP 1094

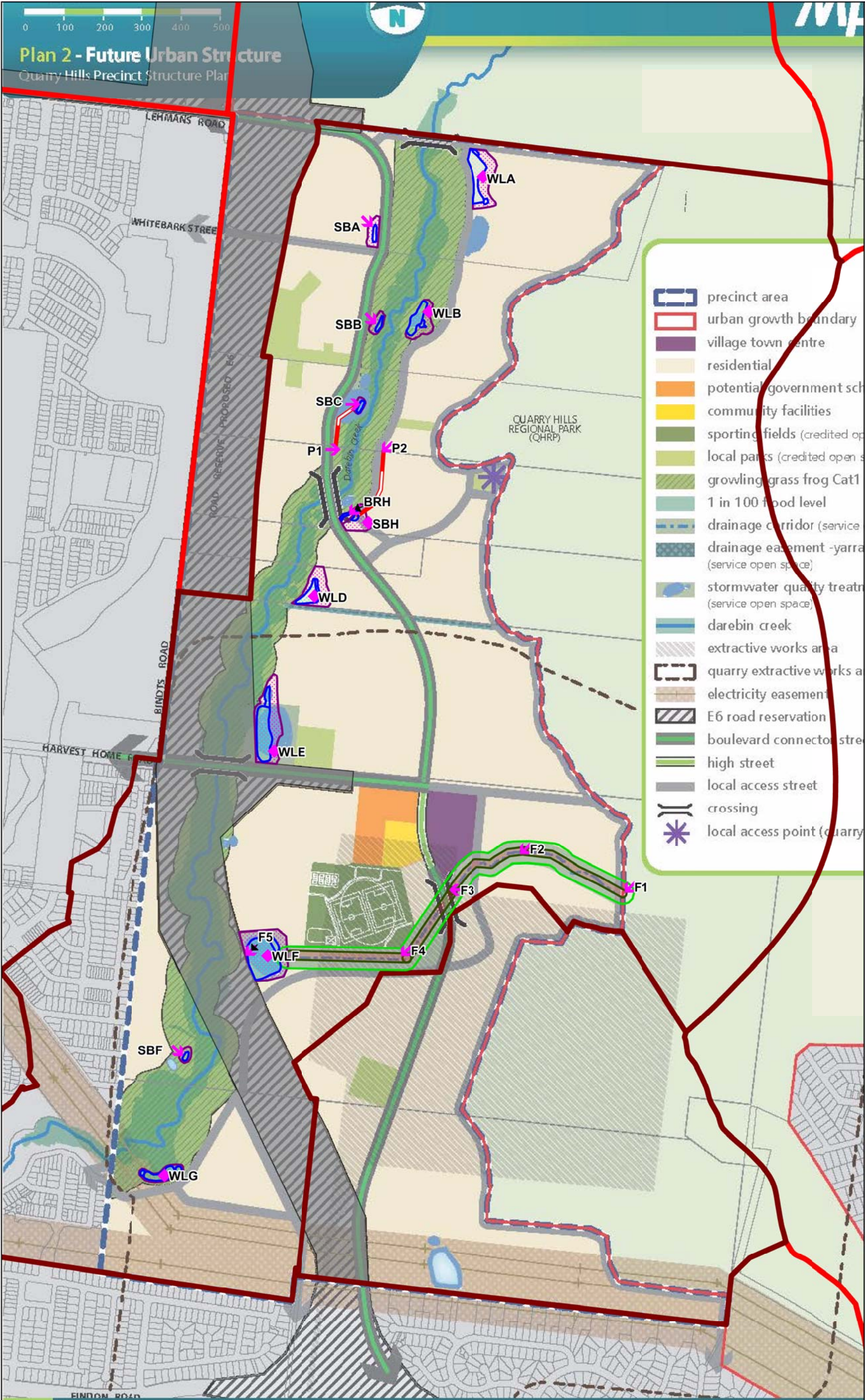
# Quarry Hills

C188

## Appendix 9

January 2016





- Scheme Boundary
  - Property (unpaid)
  - Property (partly paid)
  - Property (fully paid)
  - Contribution
  - Stage (Allocated)
  - Stage (Works in Progress)
  - Stage (Finalised)
  - Nodes
  - Pipeline
  - Culvert
  - Soft Engineering
  - Grassed Swale
  - Bio-Retention Swale
  - Channel
  - Low Flow Pipe with Channel
  - Clearout Works
  - Sediment Trap
  - Litter Trap
  - Retarding Basin
  - Wetland
  - Bio-Retention Basin
  - Buffer Strip
  - Inlet/Outlet Structure
  - Junction Pit
- Existing Assets**
- Pipeline
  - Channel
  - Natural Waterway
  - Retarding Basin
  - Wetland
  - Sediment Trap
  - Lake

Quarry Hills DS Strategy 4520

Whilst all due skill and attention has been used Melbourne Water Corporation shall not be liable in anyway for loss of any kind including damages, costs, interest, loss of profits or special loss or damage, arising from any error, inaccuracy, incompleteness or other defect in this information. By receiving and accepting this information the recipient acknowledges that Melbourne Water Corporation makes no representations as to the accuracy or completeness of this information and ought carry out its own investigation if appropriate.

Map at A3

19/11/2015

