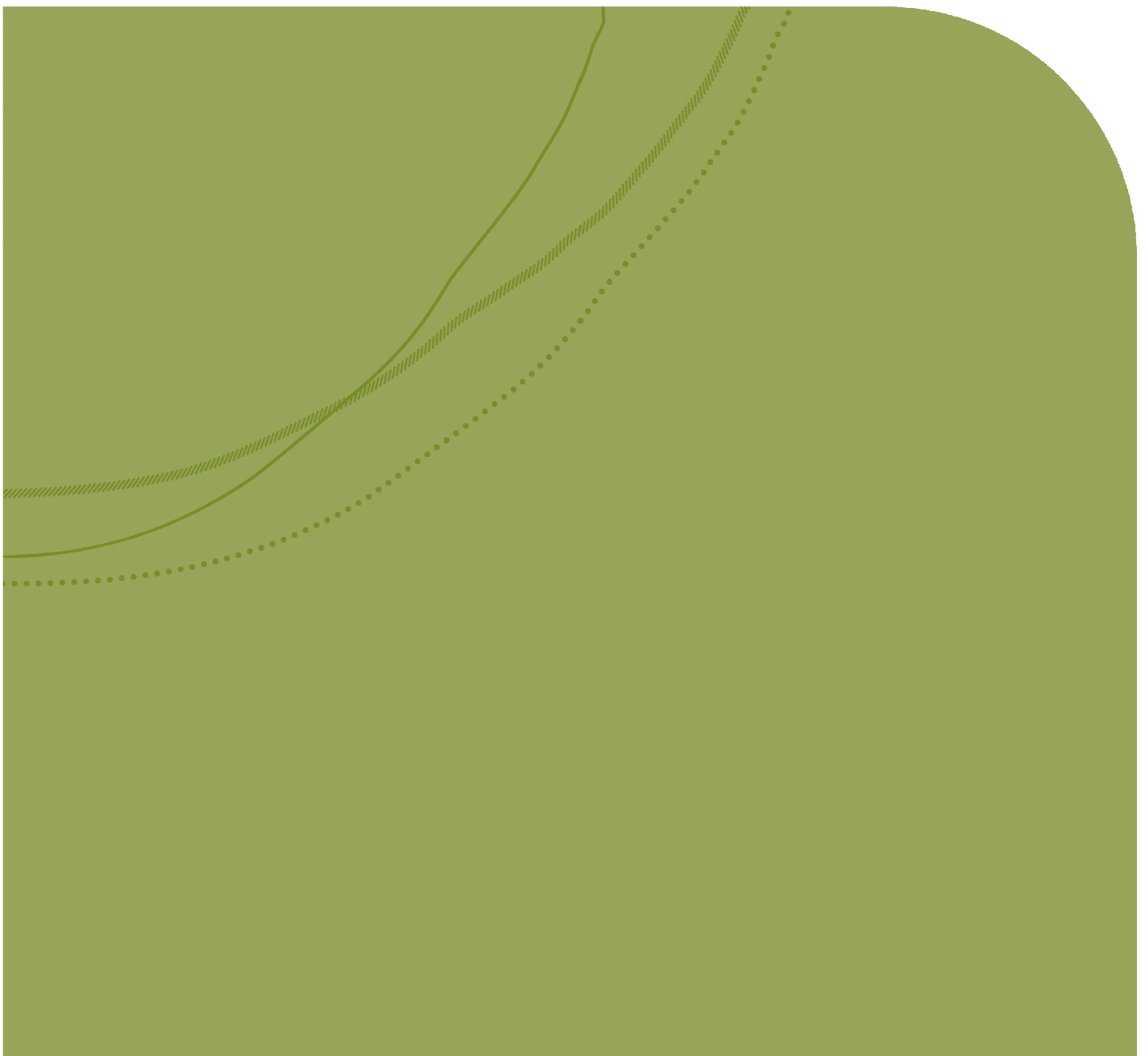


Conservation Management Plan for Conservation Area 10 – Truganina Cemetery Grassland



Published by the Victorian Government Department of Environment and Primary Industries
Melbourne, July 2013

© The State of Victoria Department of Environment and Primary Industries 2013
This publication is copyright. No part may be reproduced by any process except in accordance with the provisions of the *Copyright Act 1968*.

Authorised by the Victorian Government, 8 Nicholson Street, East Melbourne.

ISBN 978-1-74287-879-9 (pdf)

For more information contact the DEPI Customer Service Centre 136 186

Disclaimer

This publication may be of assistance to you but the State of Victoria and its employees do not guarantee that the publication is without flaw of any kind or is wholly appropriate for your particular purposes and therefore disclaims all liability for any error, loss or other consequence which may arise from you relying on any information in this publication.

Accessibility

If you would like to receive this publication in an accessible format, such as large print or audio, please telephone 136 186, or email customer.service@depi.vic.gov.au

Deaf, hearing impaired or speech impaired? Call us via the National Relay Service on 133 677 or visit www.relayservice.com.au

This document is also available in PDF format on the internet at www.depi.vic.gov.au

Contents

Introduction	2
Land covered by the CMP	2
Objectives of management	2
Securing the conservation area	3
Biodiversity values of the conservation area	3
<hr/>	
Matters of national environmental significance	3
Matters of state significance	3
Management of the conservation area	5
<hr/>	
Restoration area and interface area	5
Public access	5
Development and works	5
Fire management	5
Direct seeding or planting	5
References	5
<hr/>	

Introduction

This Conservation Management Plan (CMP) has been prepared for Conservation Area 10 – Truganina Cemetery Grassland established by the Biodiversity Conservation Strategy for Melbourne's Growth Corridors (BCS) (DEPI, 2013a).

The Truganina Cemetery Grassland comprises the cemetery, a grassland restoration area, and an interface area around the cemetery and restoration area to protect the biodiversity values of these areas from threats such as weed invasion.

The BCS requires a CMP to be prepared for each conservation area in the growth corridors. The BCS was prepared as part of the commitments to the Australian Government made under the Melbourne Strategic Assessment.

The purpose of Truganina Cemetery Grassland is to protect very high quality native grassland that contains a range of biodiversity values of national and state significance, together with the buffer around the cemetery to protect the area from threats and enable management of grassland values.

The CMP identifies the biodiversity values of Truganina Cemetery Grassland and broadly outlines how these biodiversity values will be protected and managed for conservation. The CMP will be implemented through more detailed management plans once the land within the area is secured for conservation.

The protection and management of Truganina Cemetery Grassland will be funded under a cost recovery model for the Melbourne Strategic Assessment. For more information on the cost recovery model, visit the Department of Environment and Primary Industries (DEPI) website.

This CMP has been prepared by DEPI in consultation with the Growth Areas Authority (GAA) and the Department of Transport, Planning and Local Infrastructure (DTPLI).

The Truganina Cemetery Grassland conservation area boundary is proposed to be changed from that shown in the BCS. The BCS sets out criteria to be met in reviewing the conservation area boundary. These criteria have been met in the revised conservation area boundary. The revised boundary is the one shown in this document.

Note: The approval of actions relating to urban development within the relevant parts of the growth corridors has not been granted by the federal Minister at the time this CMP was prepared. Should this approval contain conditions of relevance to this land, these will need to be adhered to and this CMP may be updated accordingly.

Land covered by the CMP

This CMP covers the land within the Truganina Cemetery Grassland (comprising the cemetery, grassland restoration area and interface area) shown in Figure 1.

The conservation area is 7.82 hectares, including the grassland restoration area and interface area.

Objectives of management

The objectives of management for Truganina Cemetery Grassland are to:

- Ensure the long-term persistence of Button Wrinklewort
- Ensure the long-term persistence of Spiny Rice-flower
- Maintain or improve the current quality and extent of Natural Temperate Grassland,
- Maintain or improve the current site quality for other matters of national environmental significance and state significance
- Establish a restoration area adjacent to the cemetery to allow for planting of Button Wrinklewort and Spiny Rice-flower and the expansion of the area of native grassland and habitat.

Securing the conservation area

Land within Truganina Cemetery Grassland comprises Crown land (the cemetery) and private land (the grassland restoration area and interface area).

Planning provisions will require those parts of a property within the conservation area to be secured for conservation if a landowner seeks a planning permit for development or works on that property.

Land will be secured for conservation within the Truganina Cemetery Grassland through one of the following mechanisms:

- Freehold land will be transferred to the Crown or vested in a public authority on a voluntary basis or secured through a Land Management Co-operative Agreement with DEPI under section 69 of the *Conservation Forests and Lands Act 1987* (CFL Act)
- Crown land will be secured through a Public Authority Management Agreement or other appropriate mechanism.

Prior to securing land, landowners have a 'duty of care' to manage their land under the *Catchment and Land Protection Act 1994* (CLP Act), including to conserve soil and eradicate regionally prohibited weeds.

Biodiversity values of the conservation area

Truganina Cemetery Grassland occurs within the Victorian Volcanic Plain bioregion. The conservation area contains matters of national environmental significance listed under the EPBC Act and matters of state significance listed under the FFG Act and/or DEPI's advisory lists for rare or threatened species (DSE, 2005, 2013).

The biodiversity values of Truganina Cemetery Grassland are shown in Figure 1, including the native vegetation quality (habitat score), Ecological Vegetation Class (EVC) of the native vegetation and threatened species records.

Matters of national environmental significance

The cemetery contains the following matters of national environmental significance:

- Very high quality Natural Temperate Grassland
- Button Wrinklewort population within high persistence habitat (the population in the cemetery is one of the most important populations in Victoria)
- Spiny Rice-flower population within high persistence habitat
- Habitat for Striped Legless Lizard (population within cemetery not confirmed recently).

Matters of state significance

The cemetery contains the following matters of state significance:

- Western (Basalt) Plains Grasslands Community
- Button Wrinklewort
- Spiny Rice-flower
- Striped Legless Lizard (population within cemetery not confirmed recently)
- Arching Flax-lily.

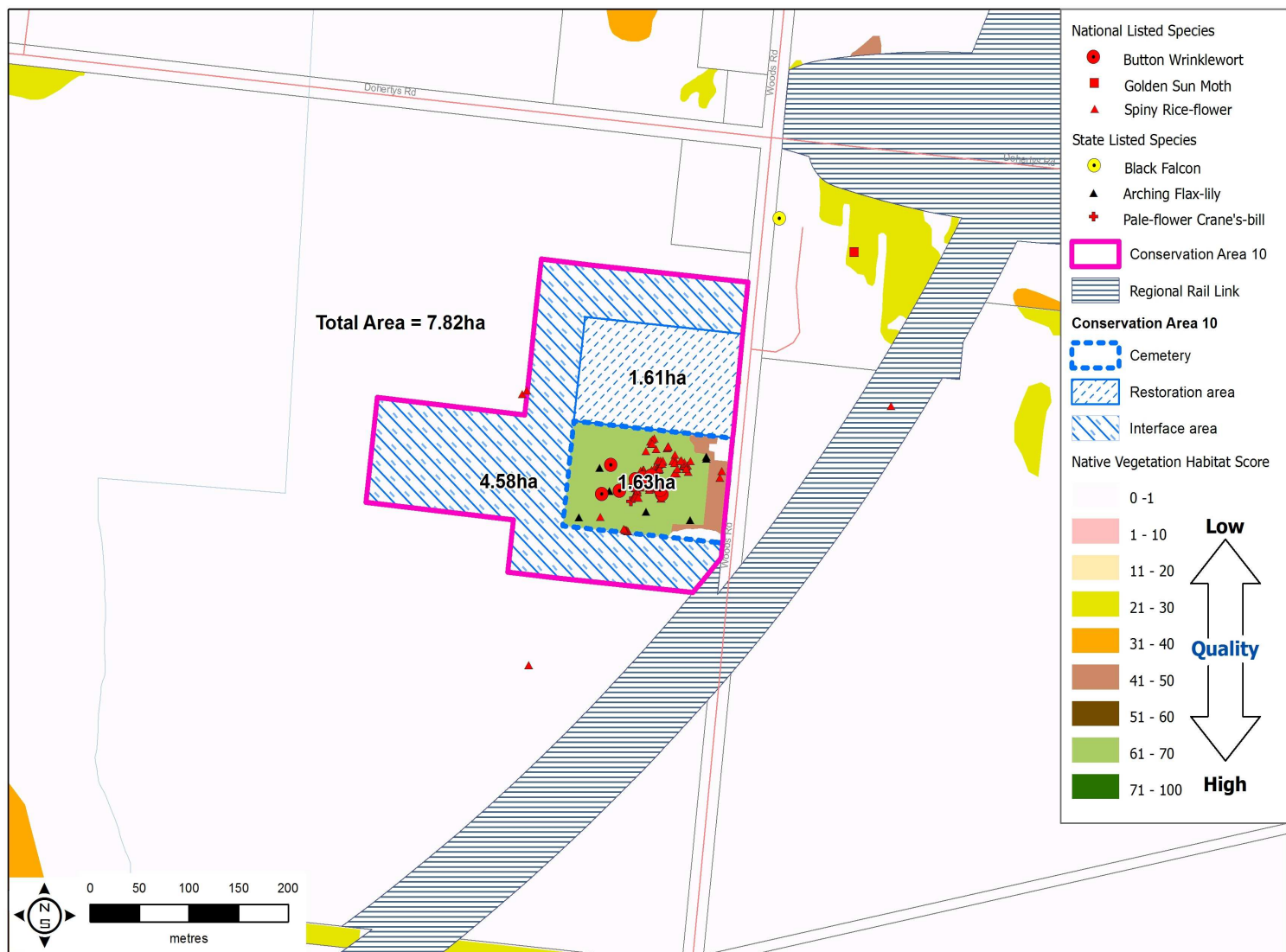


Figure 1 – Truganina Cemetery Grassland

Management of the conservation area

The framework for managing Truganina Cemetery Grassland will depend on how land within the area is secured.

- The landowner will be responsible for the management of land that is secured through a Land Management Co-operative Agreement under the CFL Act
- A public land manager will be responsible for the management of Crown land.

Management plan(s) will be prepared by the land manager(s) after land within the conservation area is secured.

Restoration area and interface area

A grassland restoration area will be established adjacent to the cemetery to allow for planting of Button Wrinklewort and Spiny Rice-flower and the expansion of the area of native grassland and habitat. The restoration area will:

- allow for a planting of propagated Button Wrinklewort plants immediately adjacent to the remnant population, as a means of protecting the genetic health of the remnant population
- allow space for a planting of propagated Spiny Rice-flower plants, as a means of protecting the genetic health of the remnant population, in a way that does not disturb the soil in the remnant grassland
- provide scope for expansion and restoration of native grassland outside the existing remnant vegetation, to provide a larger habitat area for the resident species and scope for managing the grassland in 'mosaic' fashion.

An interface area will be established around the cemetery and restoration area to minimise the impacts of adjacent land-uses, including urban development, on the biodiversity values of the conservation area.

The interface area was determined through the precinct structure planning process for PSP 1090 Truganina in accordance with the principles and standards specified in the BCS.

The rationale for the establishment of the interface area and restoration area is set out in DEPI 2013(b).

The restoration area and interface area are shown in Figure 1.

Public access

Public access may be available in those parts of the Truganina Cemetery Grassland that are public land. Public access may be restricted to designated areas to ensure biodiversity values are protected.

Public access arrangements will be set out in the management plan(s) for the conservation area that will be prepared after land within the conservation area is secured.

Development and works

The BCS specifies that any development and works proposed within conservation areas will only be permitted with the agreement of DEPI following implementation of appropriate mitigation measures.

Fire management

Fire will be managed in Truganina Cemetery Grassland to ensure the protection of human life, private property, essential and community infrastructure and biodiversity values. The public land manager will be responsible for fire management in accordance with the Code of Practice for Bushfire Management on Public Land (DSE, 2012).

Direct seeding or planting

Direct seeding or planting of propagated threatened plant species into Truganina Cemetery Grassland may be required to ensure populations of threatened species present within the area remain sustainable in the long-term.

References

Department of Environment and Primary Industries (2013a) Biodiversity Conservation Strategy for Melbourne's Growth Corridors, Department of Sustainability and Environment, East Melbourne.

Department of Environment and Primary Industries (2013b) Discussion Paper: The Truganina Cemetery Buffer, Department of Sustainability and Environment, East Melbourne.

Department of Sustainability and Environment (2012) Code of Practice for Bushfire Management on Public Land, Department of Sustainability and Environment, East Melbourne.

Department of Sustainability and Environment (2013). Advisory List of Threatened Vertebrate Fauna in Victoria. Department of Sustainability and Environment, East Melbourne

Department of Sustainability and Environment (2005). Advisory List of Rare or Threatened Plants in Victoria. Department of Sustainability and Environment, East Melbourne.

Włodarczyk and Williams (2004) Truganina Cemetery Environmental Management Plan for Wyndham City Council, Native Vegetation Management Services, Melbourne

