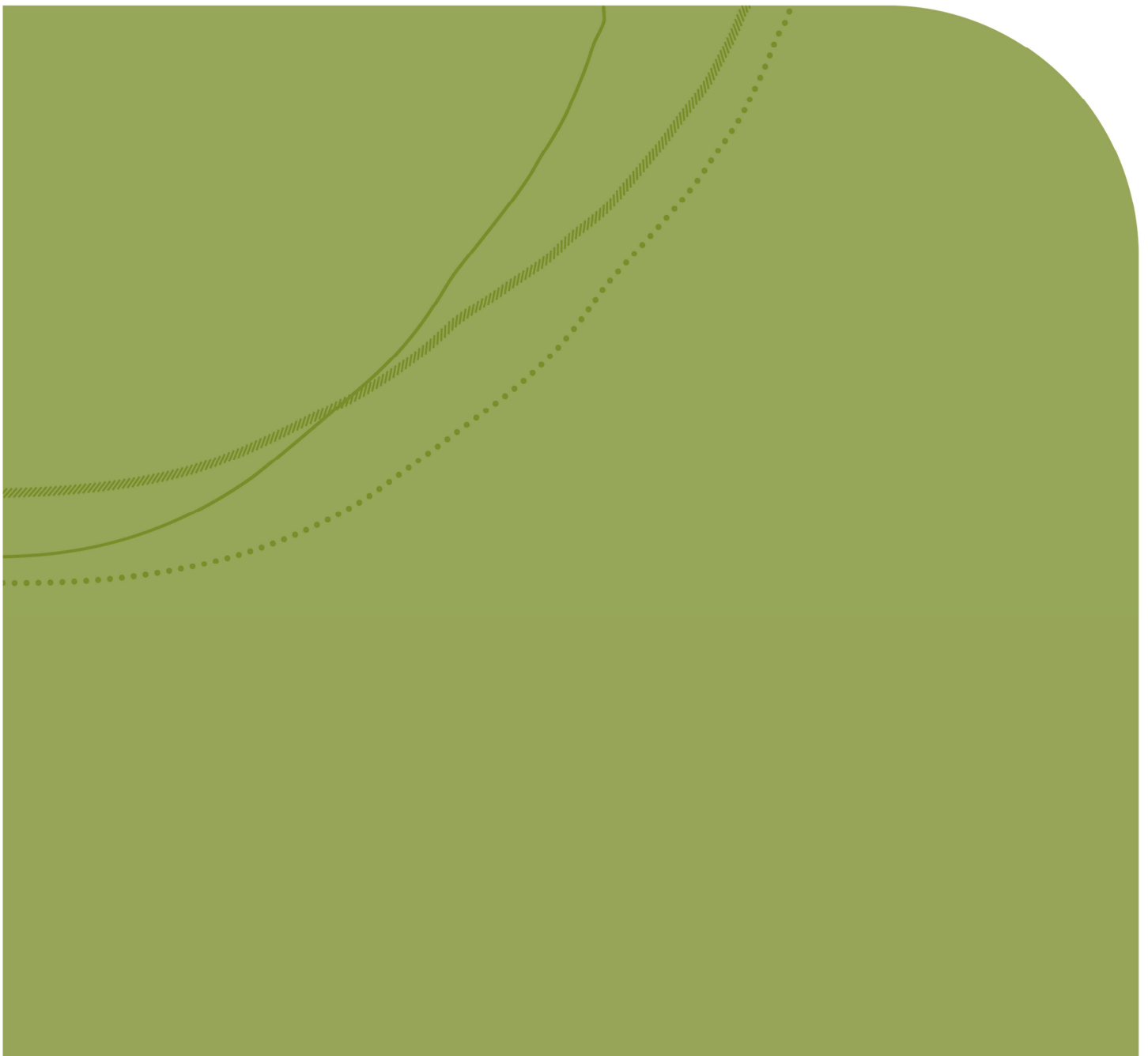


Conservation Management Plan for Conservation Area 11 – Woods Road

Melbourne Strategic Assessment



Published by the Victorian Government Department of Environment and Primary Industries
Melbourne, July 2013

© The State of Victoria Department of Environment and Primary Industries 2013
This publication is copyright. No part may be reproduced by any process except in accordance with the provisions of the *Copyright Act 1968*.

Authorised by the Victorian Government, 8 Nicholson Street, East Melbourne.

ISBN 978-1-74287-880-5 (pdf)

For more information contact the DEPI Customer Service Centre 136 186

Disclaimer

This publication may be of assistance to you but the State of Victoria and its employees do not guarantee that the publication is without flaw of any kind or is wholly appropriate for your particular purposes and therefore disclaims all liability for any error, loss or other consequence which may arise from you relying on any information in this publication.

Accessibility

If you would like to receive this publication in an accessible format, such as large print or audio, please telephone 136 186, or email customer.service@depi.vic.gov.au

Deaf, hearing impaired or speech impaired? Call us via the National Relay Service on 133 677 or visit www.relayservice.com.au

This document is also available in PDF format on the internet at www.depi.vic.gov.au

Contents

Introduction	2
Land covered by the CMP	2
Objectives of management	2
Securing the conservation area	3
Biodiversity values of the conservation area	5
<hr/>	
Matters of national environmental significance	5
Matters of state significance	5
Management of the conservation area	5
<hr/>	
Public access	5
Development and works	6
Fire management	6
Translocation, direct seeding or planting	6
Interface area	6
References	6
<hr/>	

Introduction

This Conservation Management Plan (CMP) has been prepared for Conservation Area 11 – Woods Road established by the Biodiversity Conservation Strategy for Melbourne's Growth Corridors (BCS) (DEPI, 2013).

The BCS requires a CMP to be prepared for each conservation area in the growth corridors. The BCS was prepared as part of the commitments to the Australian Government made under the Melbourne Strategic Assessment.

The purpose of Woods Road is to protect high quality native grassland that contains high persistence habitat for Golden Sun Moth within a practically manageable area that is contiguous with the Truganina South Golden Sun Moth reserve.

The CMP identifies the biodiversity values of Woods Road and broadly outlines how these biodiversity values will be protected and managed for conservation. The CMP will be implemented through more detailed management plans once the land within the area is secured for conservation.

The protection and on-going management of Woods Road will be funded under a cost recovery model for the Melbourne Strategic Assessment. For more information on the cost recovery model, visit the Department of Environment and Primary Industries (DEPI) website.

This CMP has been prepared by DEPI in consultation with the Growth Areas Authority (GAA) and the Department of Transport, Planning and Local Infrastructure (DTPLI). The Woods Road conservation area boundary is proposed to be changed slightly from that shown in the BCS, primarily to enable the widening of Leakes Road. However the overall size of the conservation area has not changed nor has there been any diminishment of values for conservation of matters of national environmental significance protected under the federal Environment Protection and Biodiversity Conservation Act 1999. The revised boundary is the one shown in this document.

Note: The approval of actions relating to urban development within the relevant parts of the growth corridors has not been granted by the federal minister at the time this CMP was prepared. Should this approval contain conditions of relevance to this land, these will need to be adhered to and this CMP may be updated accordingly.

Land covered by the CMP

This CMP covers the land within Woods Road shown in Figure 1.

The conservation area is 21.91 hectares.

Objectives of management

The objectives of management for Woods Road are:

- Ensure the long-term persistence of Golden Sun Moth
- Maintain or improve the current quality and extent of Natural Temperate Grassland
- Maintain or improve the current site quality for other matters of national environmental significance and state significance (e.g. Spiny Rice-flower).

Securing the conservation area

Land within Woods Road comprises private land.

Planning provisions will require those parts of a property within the conservation area to be secured for conservation if a landowner seeks a permit for development or works on that property.

Land will be secured for conservation within Woods Road through one of the following mechanisms:

- Land will be acquired by the Crown on a voluntary basis
- Land will be secured through a Land Management Co-operative Agreement with DEPI under section 69 of the *Conservation Forests and Lands Act 1987* (CFL Act).

Prior to securing land, landowners have a 'duty of care' to manage their land under the *Catchment and Land Protection Act 1994*, including to conserve soil and eradicate regionally prohibited weeds.

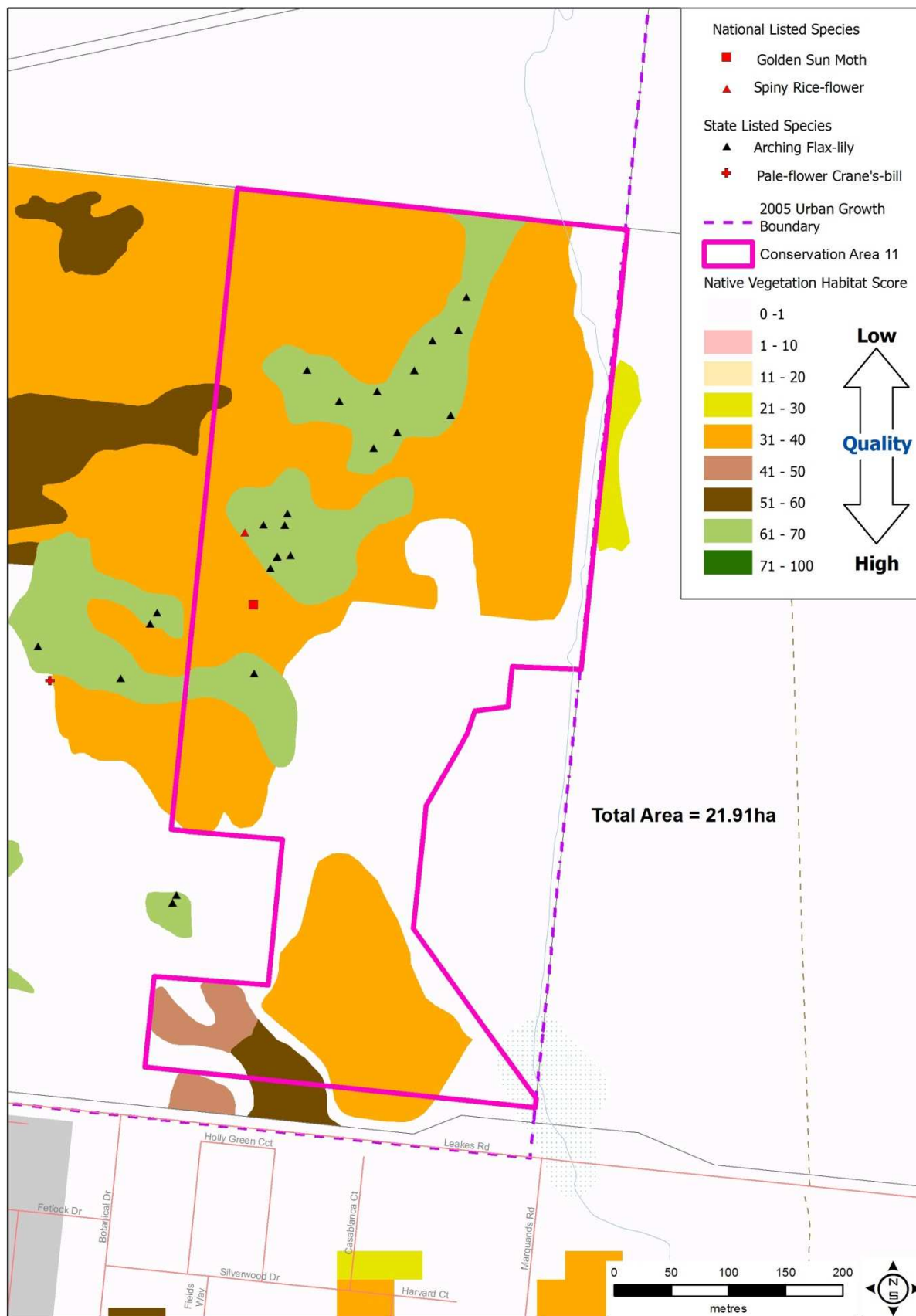


Figure 1 – Conservation Area 11: Woods Road

Biodiversity values of the conservation area

Woods Road occurs within the Victorian Volcanic Plain bioregion. The conservation area contains matters of national environmental significance listed under the EPBC Act and matters of state significance listed under the FFG Act and/or DEPI's advisory lists for rare or threatened species (DSE, 2005, 2007, 2009).

The biodiversity values of Woods Road are shown in Figure 1, including the native vegetation quality (habitat score), Ecological Vegetation Class (EVC) of the native vegetation and threatened species records.

Matters of national environmental significance

Woods Road contains the following matters of national environmental significance:

- High quality Natural Temperate Grassland
- High persistence habitat for Golden Sun Moth (population confirmed in the Truganina South Golden Sun Moth reserve that is contiguous with Woods Road)
- Spiny Rice-flower population within medium persistence habitat
- Habitat for Striped Legless Lizard (population not confirmed).

Matters of state significance

Woods Road contains the following matters of state significance:

- Western (Basalt) Plains Grasslands Community
- Spiny Rice-flower
- Arching Flax-lily

and contains Habitat for Golden Sun Moth and Striped Legless Lizard.

Management of the conservation area

The framework for managing Woods Road will depend on how land within the area is secured.

- The landowner will be responsible for the management of land that is secured through a Land Management Co-operative Agreement under the CFL Act
- A public land manager will be responsible for the management of Crown land.

Management plan(s) will be prepared by the land manager(s) after land within the conservation area is secured.

Public access

Public access may be available in those parts of Woods Road that are public land. Public access may be restricted to designated areas to ensure biodiversity values are protected.

Public access arrangements will be set out in the management plan(s) for the conservation area that will be prepared after land within the conservation area is secured.

Development and works

The BCS specifies that any development and works proposed within conservation areas will only be permitted with the agreement of DEPI following implementation of appropriate mitigation measures. Payment of applicable compensatory habitat fees would be required for any such permitted works.

Fire management

Fire will be managed in Woods Road to ensure the protection of human life, private property, essential and community infrastructure and biodiversity values. The public land manager will be responsible for fire management in accordance with the Code of Practice for Bushfire Management on Public Land (DSE, 2012).

Direct seeding or planting

Direct seeding or planting of propagated threatened plant species into Woods Road may be required to ensure populations of threatened species present within the area remain sustainable in the long-term.

Interface area

An interface area has been established for the Woods Road to minimise the impacts of adjacent land-uses, including urban development, on the biodiversity values of the conservation area.

The interface area was determined through the precinct structure planning process for PSP 1090 Truganina in accordance with the principles and standards specified in the BCS.

The interface area is shown in PSP 1090 Truganina.

References

Department of Environment and Primary Industries (2013) Biodiversity Conservation Strategy for Melbourne's Growth Corridors, Department of Environment and Primary Industries, East Melbourne.

Department of Sustainability and Environment (2012) Code of Practice for Bushfire Management on Public Land, Department of Sustainability and Environment, East Melbourne.

