

## Appendix B. 2026 Model Results

Figure 1

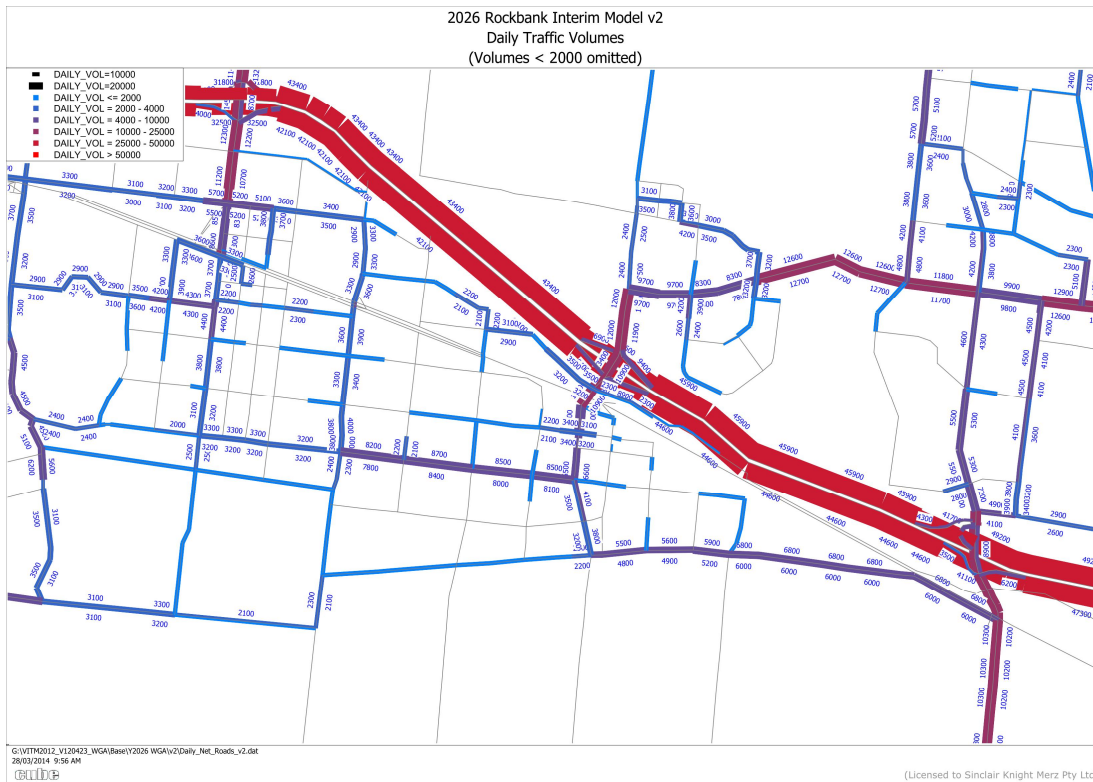


Figure 2

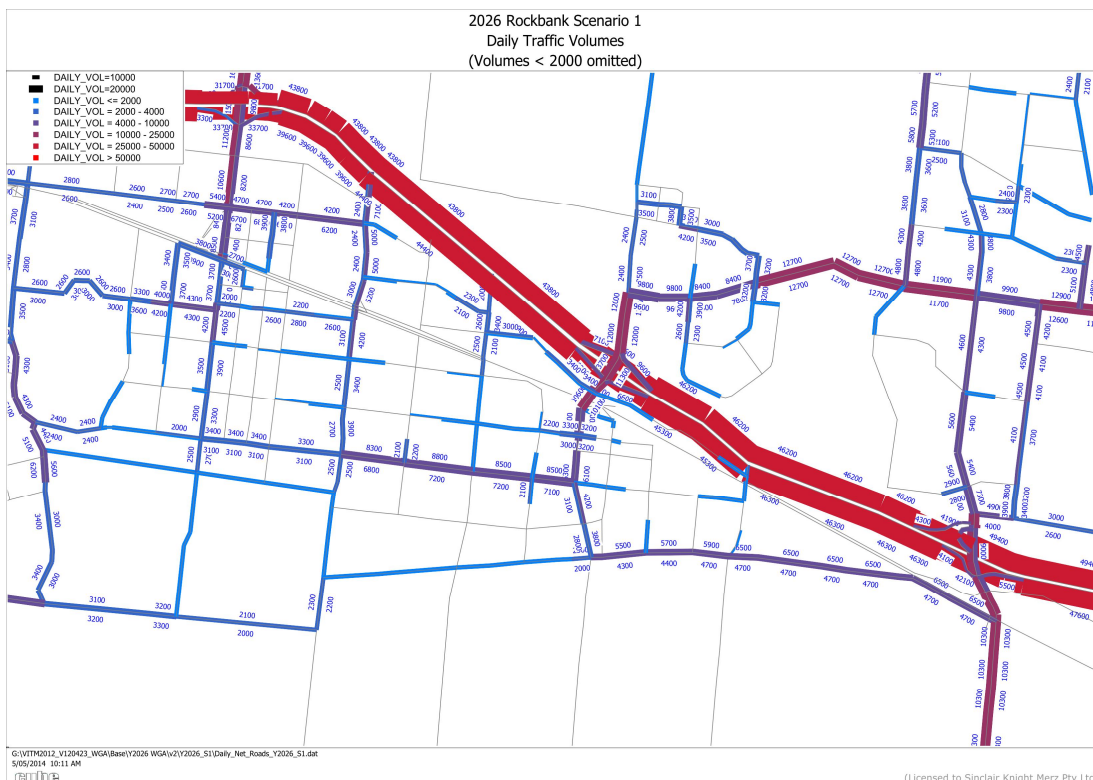


Figure 3

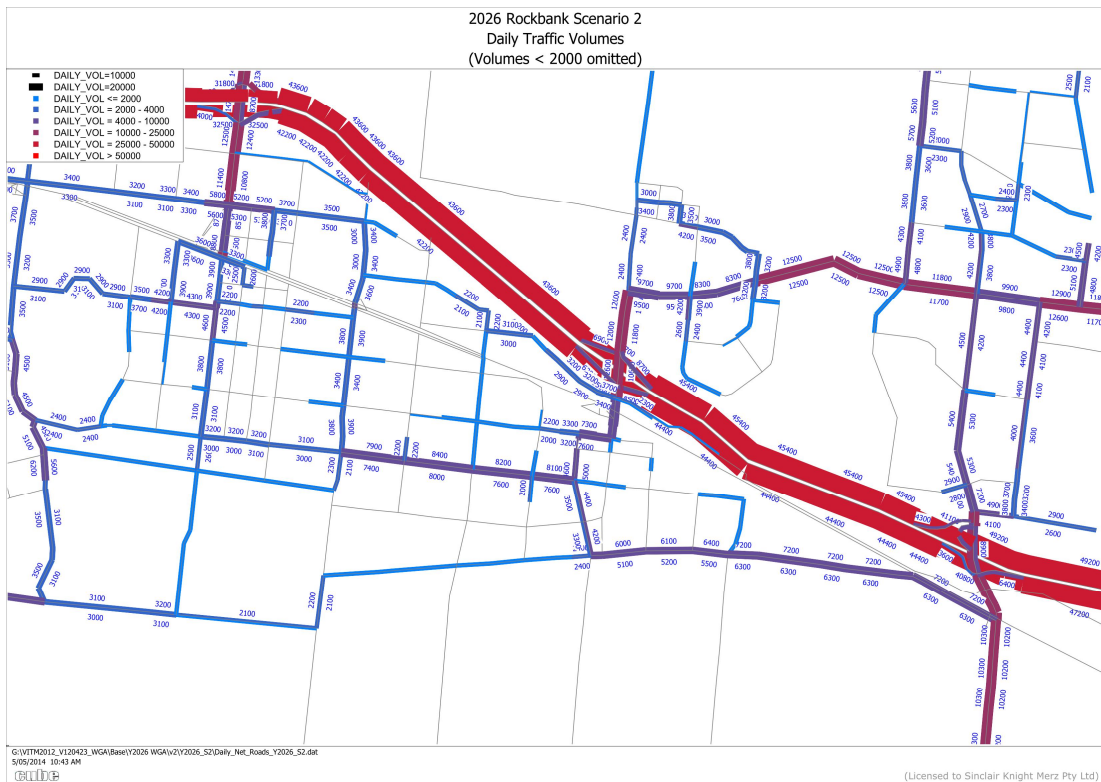


Figure 4

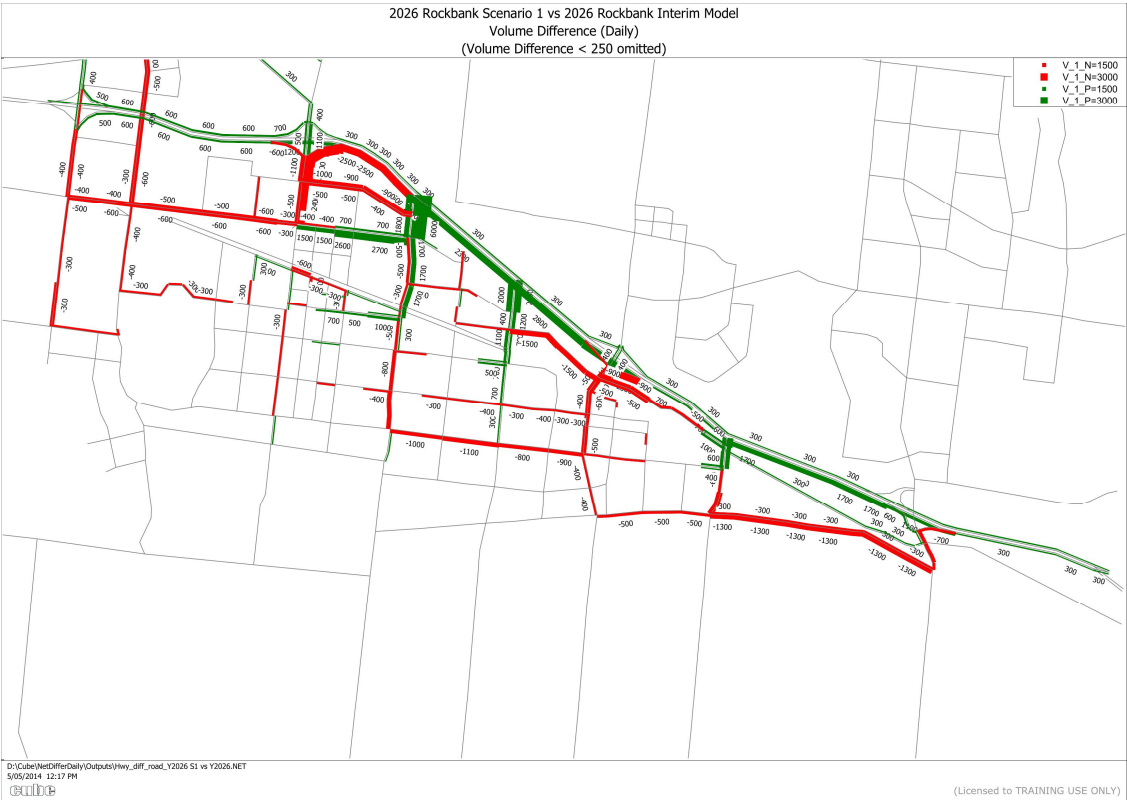


Figure 5



Figure 6



Figure 7

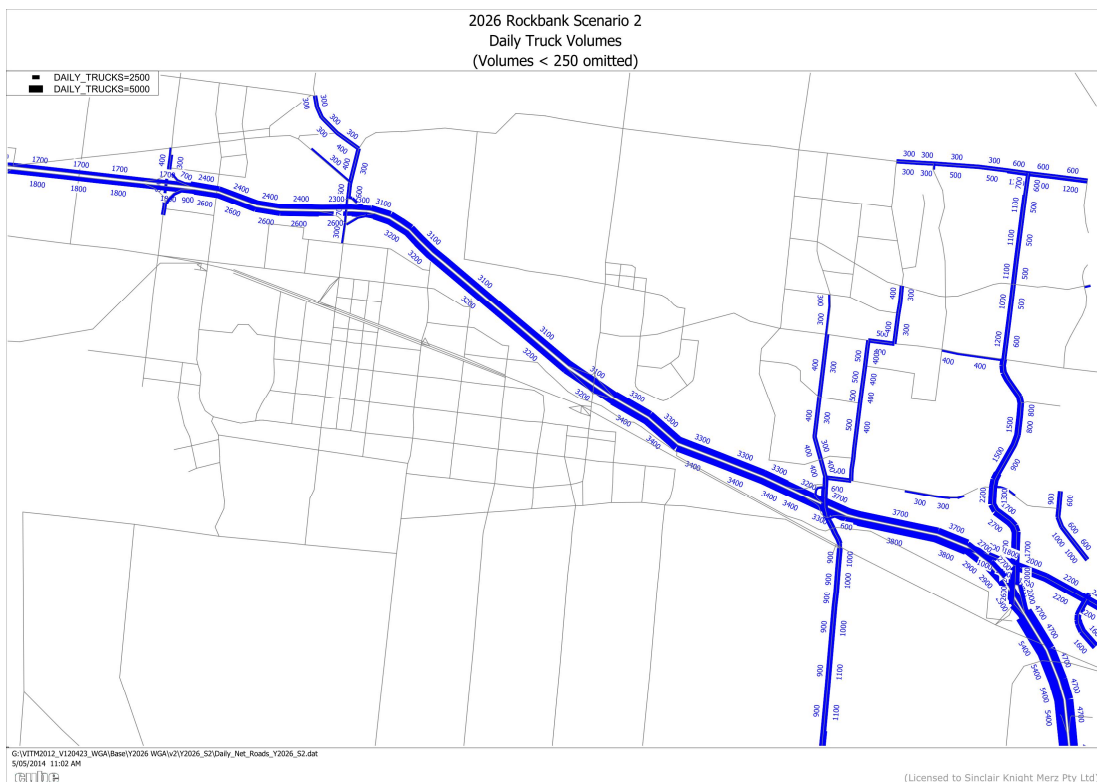




Figure 8



Figure 9



Figure 10

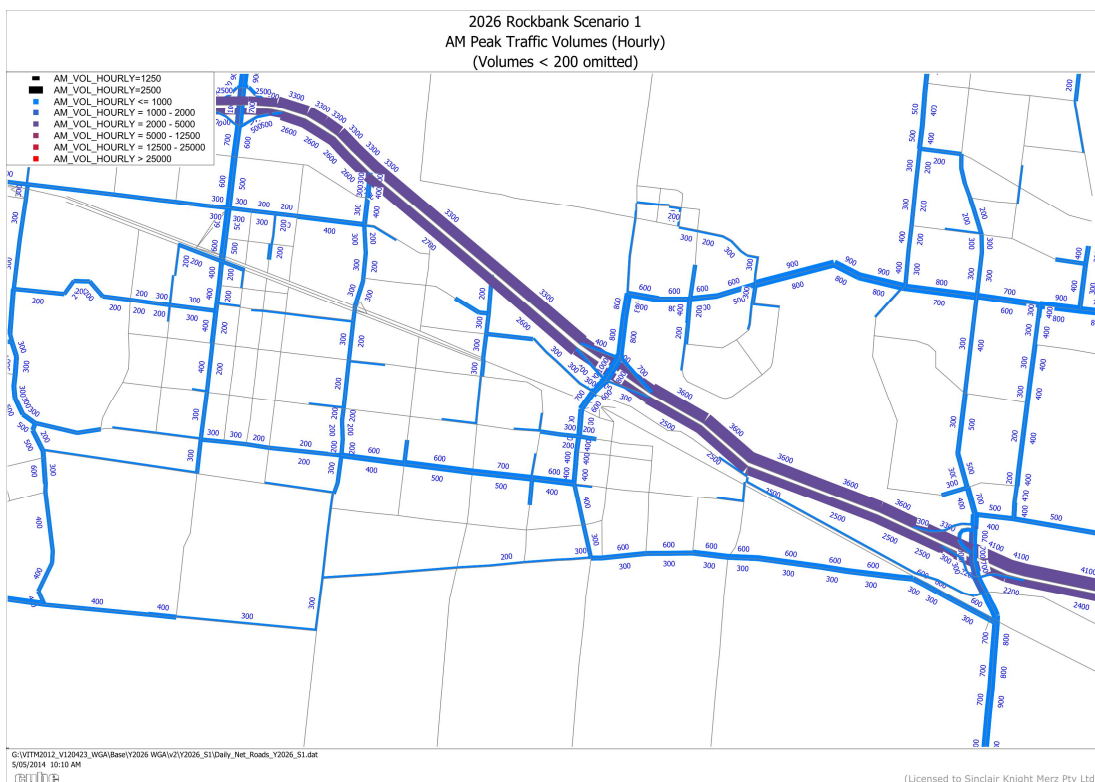


Figure 11

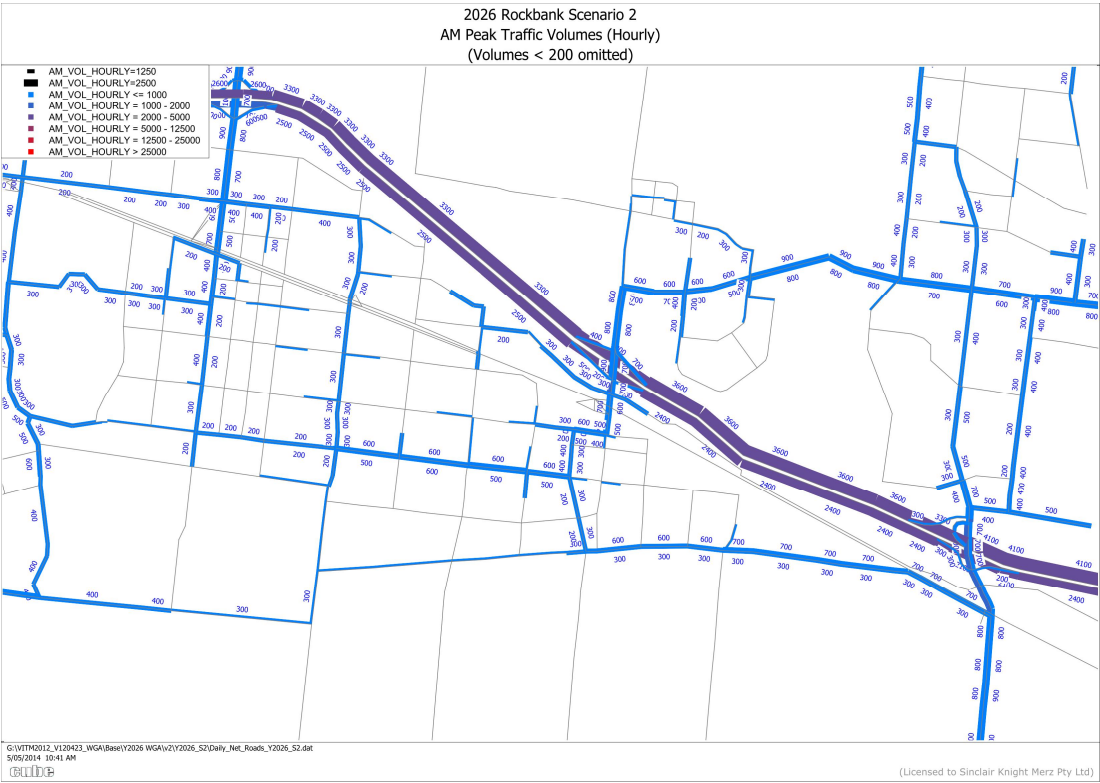


Figure 12



Figure 13



Figure 14

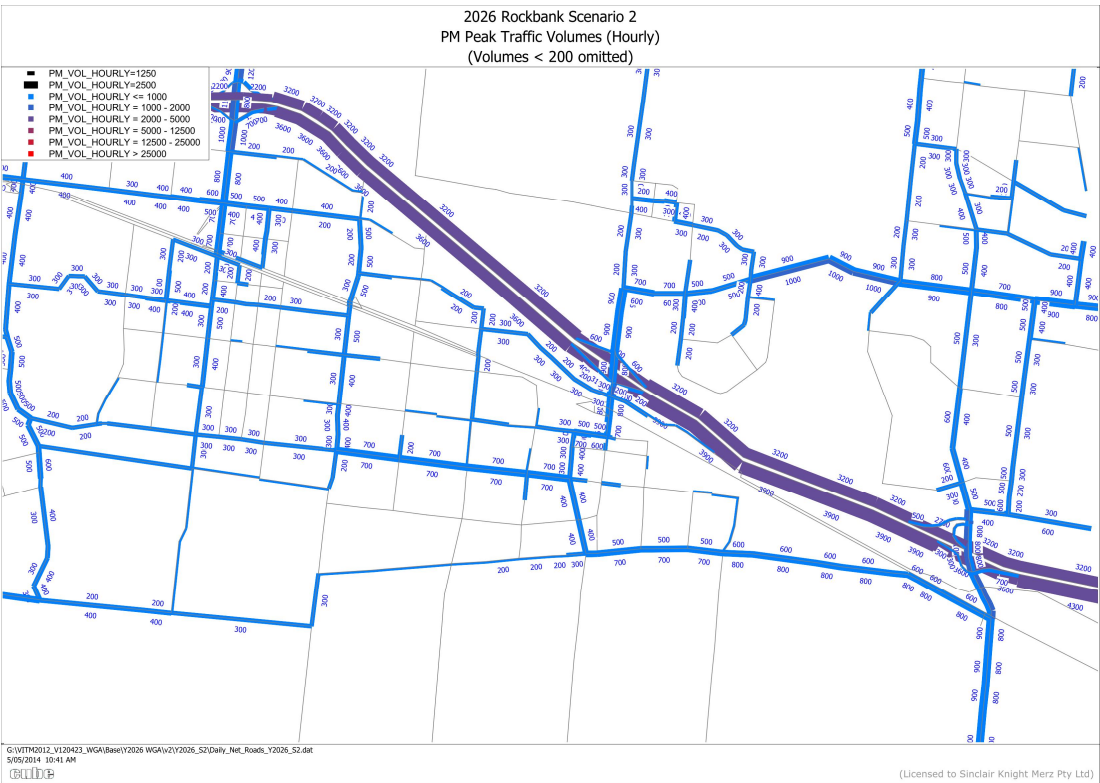




Figure 15

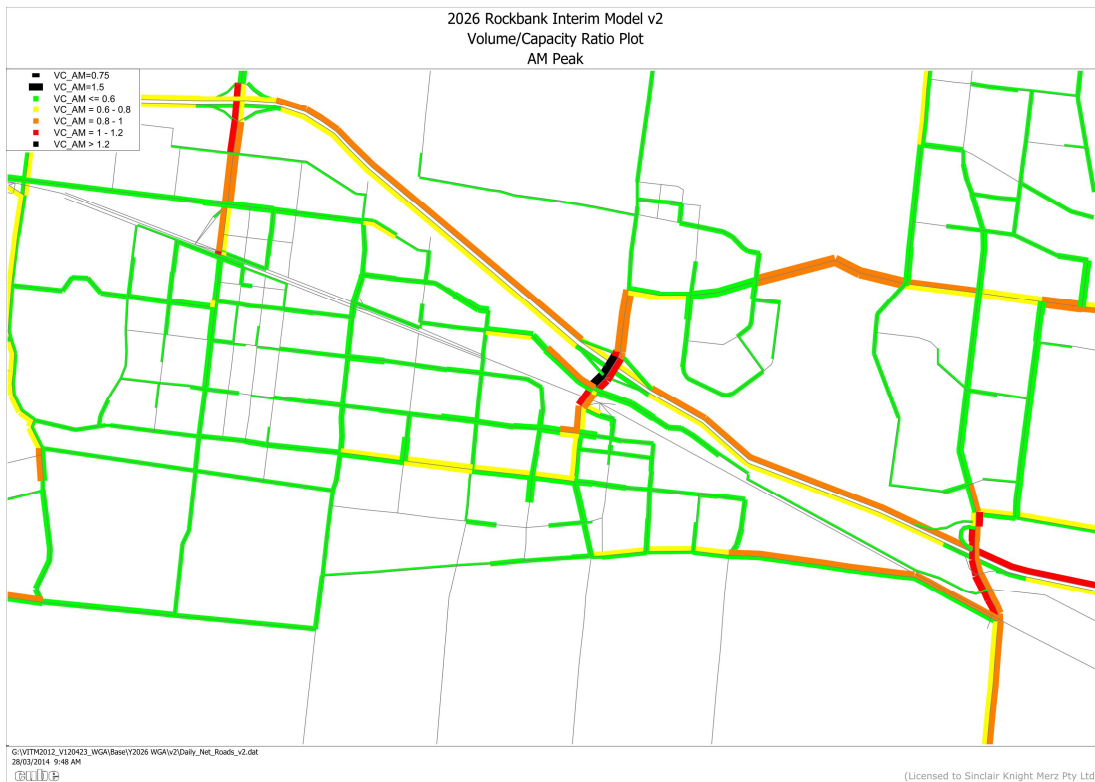


Figure 16



Figure 17

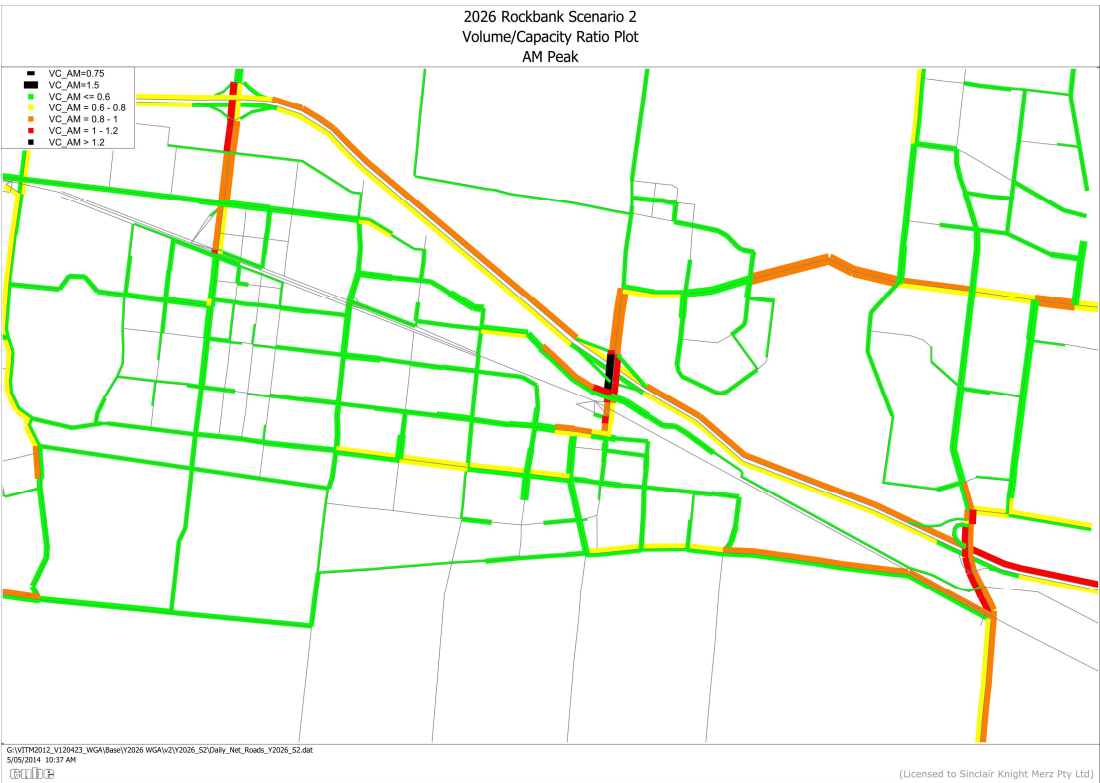


Figure 18



Figure 19

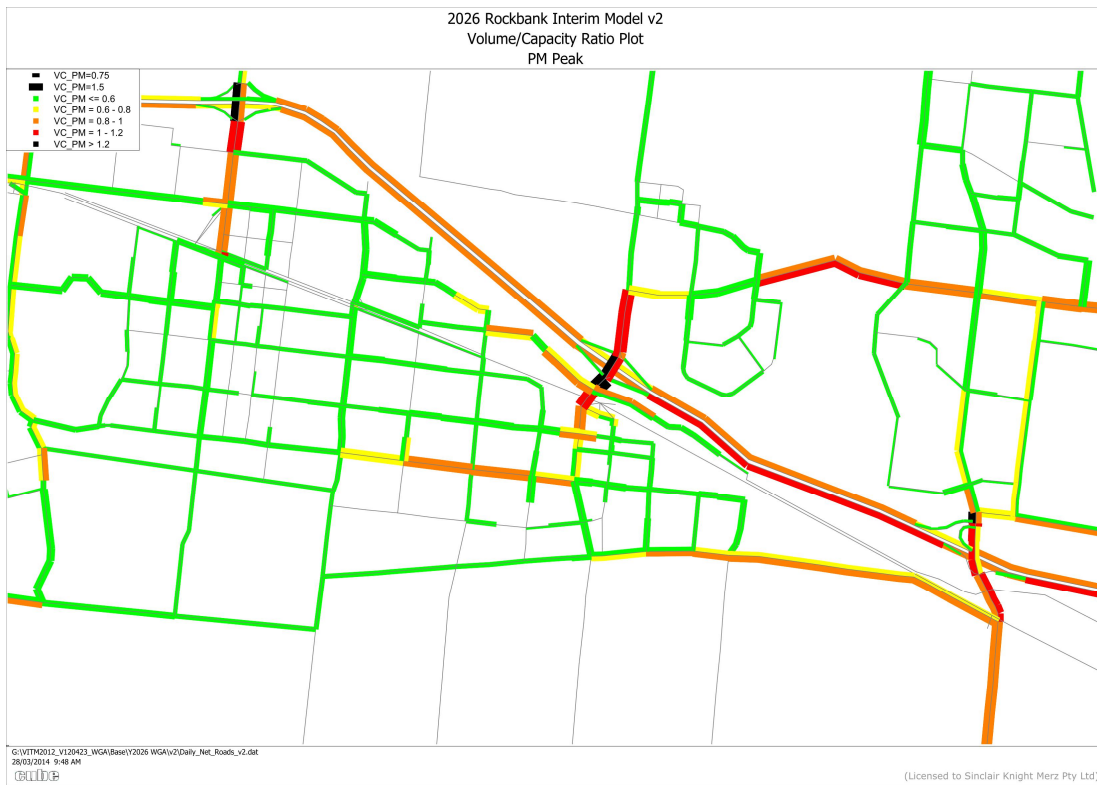


Figure 20

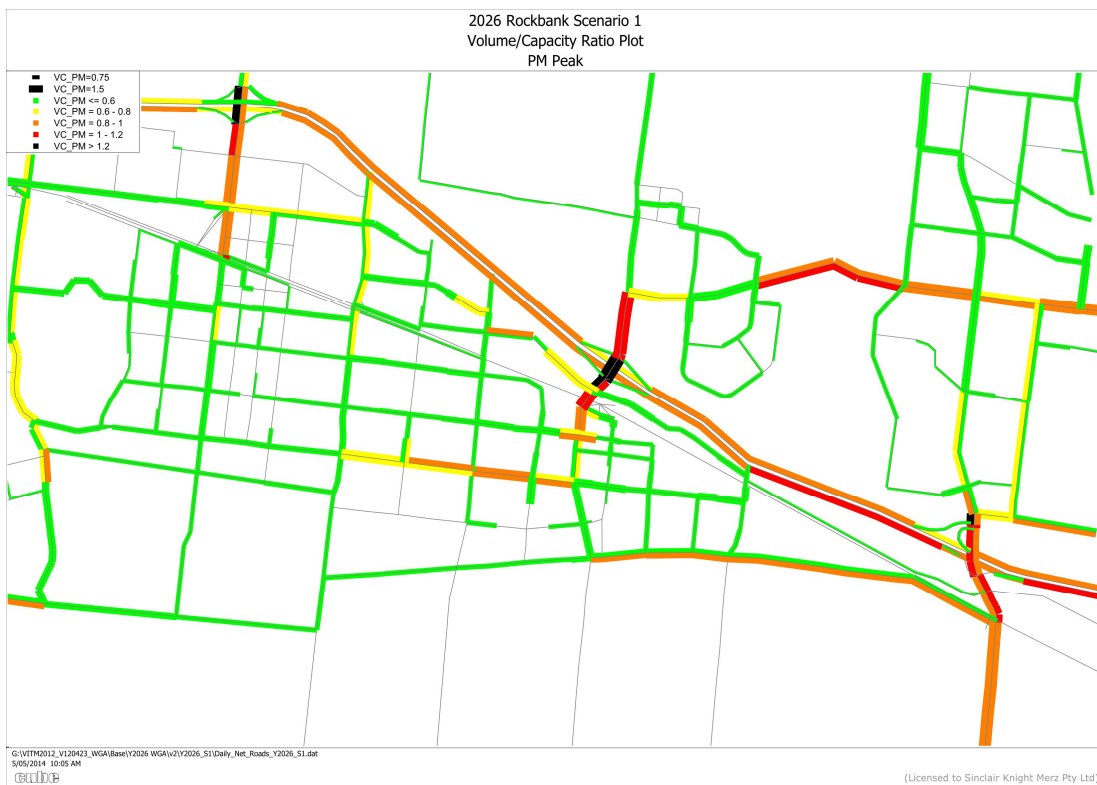


Figure 21

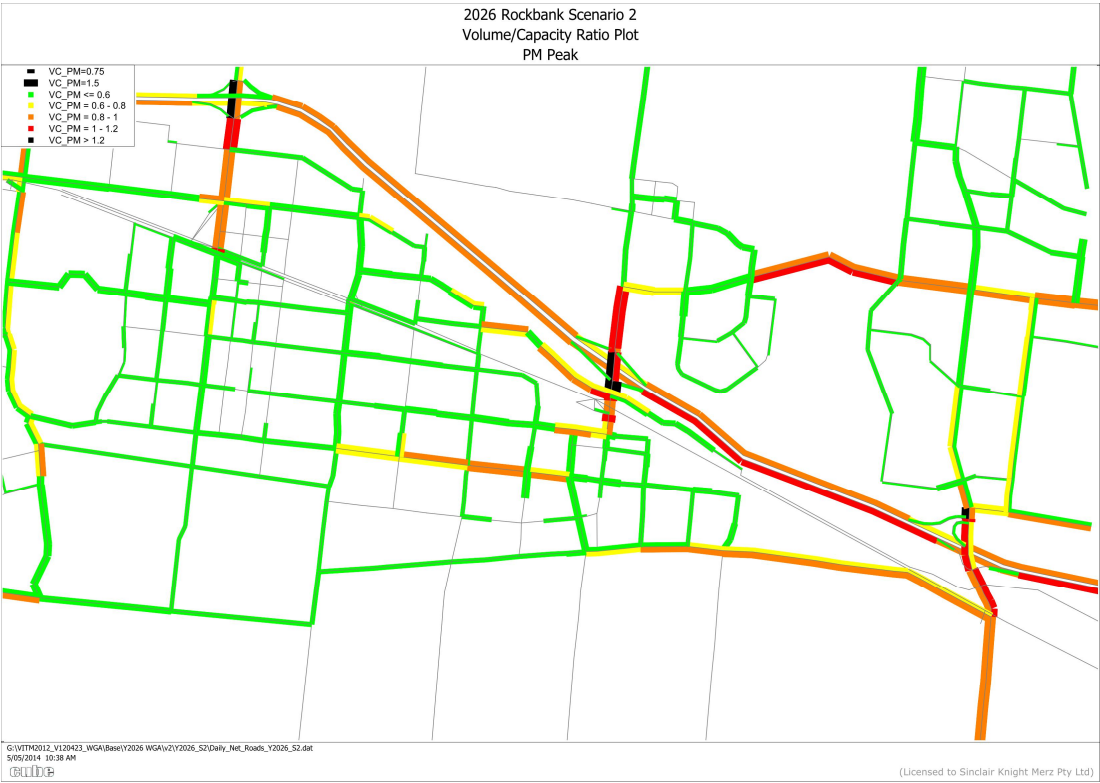


Figure 22

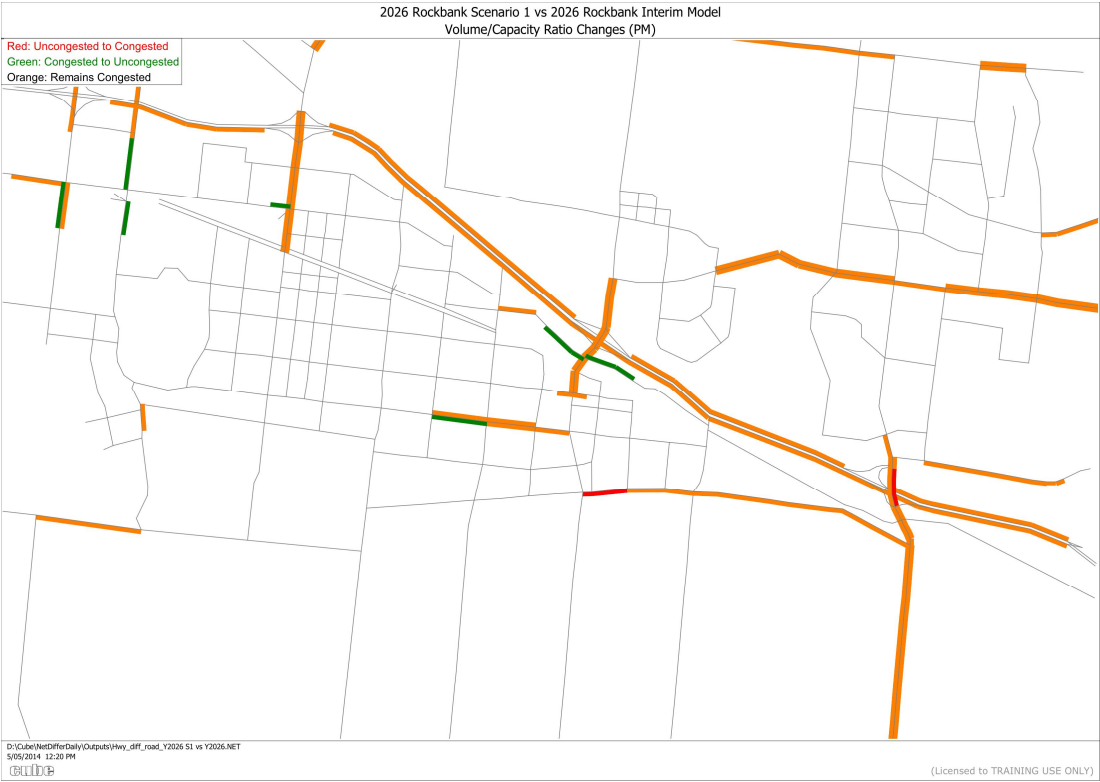


Figure 23



Figure 24

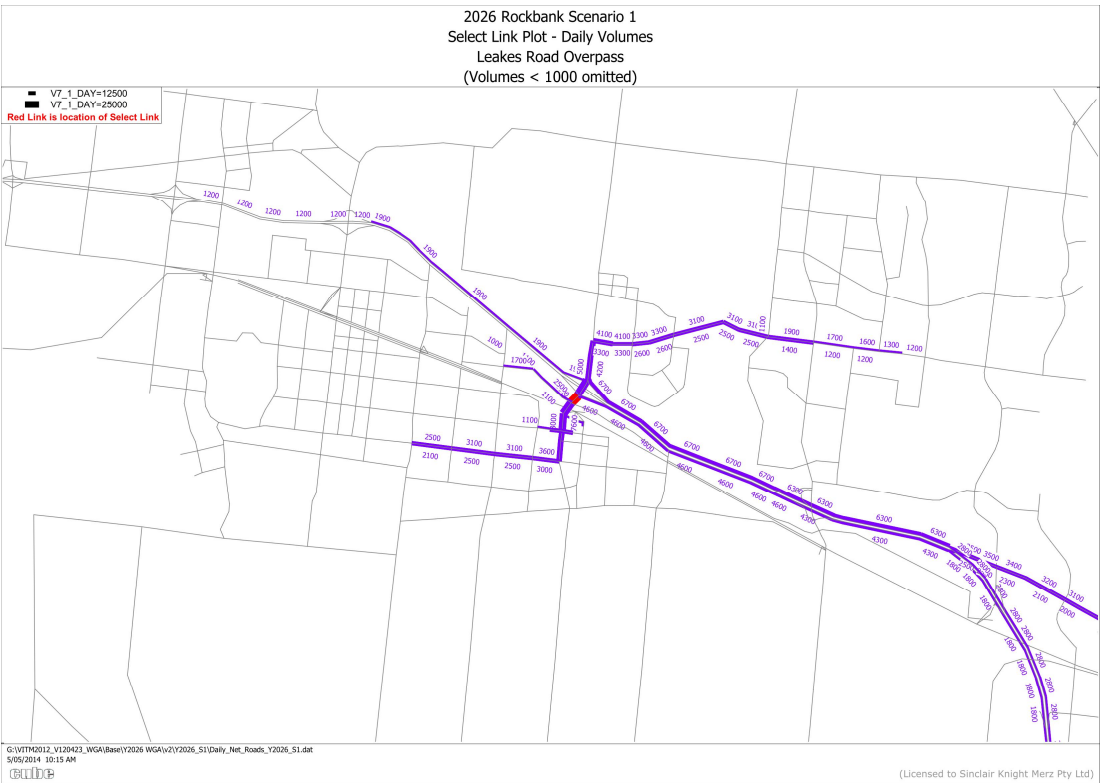




Figure 25



Figure 26



Figure 27



Figure 28



Figure 29



[illegible]

Figure 31



Figure 32





Figure 33



Figure 34

## ROCKBANK PSP MODELLING

SKM

## Rockbank 2026 Interim v2

## Bus Boardings (per direction) by route

Description	Bus Route	AM	IP	PM	OP	DAILY
ROCKBANK - WERRIBEE	SM7	-	-	-	-	-
PLUMPTON - MELTON RS (VIA TOOLERN RS)	SM130	123	126	154	71	474
ROCKBANK - TOOLERN LOOP (VIA MT COTTRELL AND PLUMPTON)	LD124	-	-	-	-	-
ROCKBANK RS - ROCKBANK WEST (VIA PLUMPTON)	C1118	-	-	-	-	-
CAROLINE SPRINGS - TOOLERN RS (VIA ROCKBANK RS)	C1104	-	-	-	-	-
TOOLERN - MELTON LOOP (COMPLETE)	LD132	-	-	-	-	-
TOOLERN RS - TOOLERN EAST RS (VIA SOUTHERN TOOLERN)	C1121	-	-	-	-	-
TOOLERN - MELTON LOOP (COMPLETE)	LD132	-	-	-	-	-
TOOLERN RS - TOOLERN EAST RS (VIA NORTHERN TOOLERN)	C1120	-	-	-	-	-
<b>TOTAL</b>		<b>123</b>	<b>126</b>	<b>154</b>	<b>71</b>	<b>474</b>

Description	Bus Route	AM	IP	PM	OP	DAILY
WERRIBEE - ROCKBANK	2SM7	-	-	-	-	-
MELTON RS - PLUMPTON (VIA TOOLERN RS)	2SM130	142	163	187	79	570
TOOLERN - ROCKBANK LOOP (VIA MT COTTRELL AND PLUMPTON)	2LD124	-	-	-	-	-
ROCKBANK WEST - ROCKBANK RS (VIA PLUMPTON)	2C1118	-	-	-	-	-
TOOLERN RS - CAROLINE SPRINGS (VIA ROCKBANK RS)	2C1104	-	-	-	-	-
MELTON - TOOLERN LOOP (COMPLETE)	2LD132	-	-	-	-	-
TOOLERN EAST RS - TOOLERN RS (VIA SOUTHERN TOOLERN)	2C1121	-	-	-	-	-
MELTON - TOOLERN LOOP (COMPLETE)	2LD132	-	-	-	-	-
TOOLERN EAST RS - TOOLERN RS (VIA NORTHERN TOOLERN)	2C1120	-	-	-	-	-
<b>TOTAL</b>		<b>142</b>	<b>163</b>	<b>187</b>	<b>79</b>	<b>570</b>

## Bus Boardings (2 way volumes)

Description	Bus Route	AM	IP	PM	OP	DAILY
ROCKBANK - WERRIBEE	SM7	-	-	-	-	-
PLUMPTON - MELTON RS (VIA TOOLERN RS)	SM130	265	289	340	151	1,044
ROCKBANK - TOOLERN LOOP (VIA MT COTTRELL AND PLUMPTON)	LD124	-	-	-	-	-
ROCKBANK RS - ROCKBANK WEST (VIA PLUMPTON)	C1118	-	-	-	-	-
CAROLINE SPRINGS - TOOLERN RS (VIA ROCKBANK RS)	C1104	-	-	-	-	-
TOOLERN - MELTON LOOP (COMPLETE)	LD132	-	-	-	-	-
TOOLERN RS - TOOLERN EAST RS (VIA SOUTHERN TOOLERN)	C1121	-	-	-	-	-
TOOLERN - MELTON LOOP (COMPLETE)	LD132	-	-	-	-	-
TOOLERN RS - TOOLERN EAST RS (VIA NORTHERN TOOLERN)	C1120	-	-	-	-	-
<b>TOTAL</b>		<b>265</b>	<b>289</b>	<b>340</b>	<b>151</b>	<b>1,044</b>

## Train Boardings

Train Line	Station	AM	IP	PM	OP	DAILY
Melton Line	Sunshine	3,677	3,776	2,358	1,278	11,088
	Ardeer	166	232	70	60	528
	Deer Park	2,728	2,442	434	594	6,197
	Caroline Springs	1,406	915	73	216	2,610
	Rockbank	1,074	998	157	243	2,471
	Toolern Road	754	648	148	168	1,719
	Melton	7,751	6,523	698	1,667	16,639
<b>TOTAL</b>		<b>17,555</b>	<b>15,534</b>	<b>3,939</b>	<b>4,226</b>	<b>41,253</b>

Period	Time
AM	7am - 9am
IP	9am - 3pm
PM	3pm - 6pm
OP	6pm - 7am

Figure 35

## ROCKBANK PSP MODELLING

SKM

## Rockbank 2026 S1

## Bus Boardings (per direction) by route

Description	Bus Route	AM	IP	PM	OP	DAILY
ROCKBANK - WERRIBEE	SM7	-	-	-	-	-
PLUMPTON - MELTON RS (VIA TOOLERN RS)	SM130	123	126	157	70	476
ROCKBANK - TOOLERN LOOP (VIA MT COTTRELL AND PLUMPTON)	LD124	-	-	-	-	-
ROCKBANK RS - ROCKBANK WEST (VIA PLUMPTON)	C1118	-	-	-	-	-
CAROLINE SPRINGS - TOOLERN RS (VIA ROCKBANK RS)	C1104	-	-	-	-	-
TOOLERN - MELTON LOOP (COMPLETE)	LD132	-	-	-	-	-
TOOLERN RS - TOOLERN EAST RS (VIA SOUTHERN TOOLERN)	C1121	-	-	-	-	-
TOOLERN - MELTON LOOP (COMPLETE)	LD132	-	-	-	-	-
TOOLERN RS - TOOLERN EAST RS (VIA NORTHERN TOOLERN)	C1120	-	-	-	-	-
<b>TOTAL</b>		<b>123</b>	<b>126</b>	<b>157</b>	<b>70</b>	<b>476</b>

Description	Bus Route	AM	IP	PM	OP	DAILY
WERRIBEE - ROCKBANK	2SM7	-	-	-	-	-
MELTON RS - PLUMPTON (VIA TOOLERN RS)	2SM130	142	163	190	78	573
TOOLERN - ROCKBANK LOOP (VIA MT COTTRELL AND PLUMPTON)	2LD124	-	-	-	-	-
ROCKBANK WEST - ROCKBANK RS (VIA PLUMPTON)	2C1118	-	-	-	-	-
TOOLERN RS - CAROLINE SPRINGS (VIA ROCKBANK RS)	2C1104	-	-	-	-	-
MELTON - TOOLERN LOOP (COMPLETE)	2LD132	-	-	-	-	-
TOOLERN EAST RS - TOOLERN RS (VIA SOUTHERN TOOLERN)	2C1121	-	-	-	-	-
MELTON - TOOLERN LOOP (COMPLETE)	2LD132	-	-	-	-	-
TOOLERN EAST RS - TOOLERN RS (VIA NORTHERN TOOLERN)	2C1120	-	-	-	-	-
<b>TOTAL</b>		<b>142</b>	<b>163</b>	<b>190</b>	<b>78</b>	<b>573</b>

## Bus Boardings (2 way volumes)

Description	Bus Route	AM	IP	PM	OP	DAILY
ROCKBANK - WERRIBEE	SM7	-	-	-	-	-
PLUMPTON - MELTON RS (VIA TOOLERN RS)	SM130	265	289	347	148	1,049
ROCKBANK - TOOLERN LOOP (VIA MT COTTRELL AND PLUMPTON)	LD124	-	-	-	-	-
ROCKBANK RS - ROCKBANK WEST (VIA PLUMPTON)	C1118	-	-	-	-	-
CAROLINE SPRINGS - TOOLERN RS (VIA ROCKBANK RS)	C1104	-	-	-	-	-
TOOLERN - MELTON LOOP (COMPLETE)	LD132	-	-	-	-	-
TOOLERN RS - TOOLERN EAST RS (VIA SOUTHERN TOOLERN)	C1121	-	-	-	-	-
TOOLERN - MELTON LOOP (COMPLETE)	LD132	-	-	-	-	-
TOOLERN RS - TOOLERN EAST RS (VIA NORTHERN TOOLERN)	C1120	-	-	-	-	-
<b>TOTAL</b>		<b>265</b>	<b>289</b>	<b>347</b>	<b>148</b>	<b>1,049</b>

## Train Boardings

Train Line	Station	AM	IP	PM	OP	DAILY
Melton Line	Sunshine	3,662	3,783	2,351	1,274	11,070
	Ardeer	166	232	67	60	524
	Deer Park	2,584	2,441	444	592	6,061
	Caroline Springs	1,537	910	73	215	2,735
	Rockbank	1,036	957	151	233	2,378
	Toolern Road	747	643	153	166	1,709
	Melton	7,764	6,524	693	1,666	16,647
<b>TOTAL</b>		<b>17,498</b>	<b>15,490</b>	<b>3,931</b>	<b>4,205</b>	<b>41,124</b>

Period	Time
AM	7am - 9am
IP	9am - 3pm
PM	3pm - 6pm
OP	6pm - 7am

Figure 36

## ROCKBANK PSP MODELLING

SKM

## Rockbank 2026 S2

## Bus Boardings (per direction) by route

Description	Bus Route	AM	IP	PM	OP	DAILY
ROCKBANK - WERRIBEE	SM7	-	-	-	-	-
PLUMPTON - MELTON RS (VIA TOOLERN RS)	SM130	131	139	191	84	545
ROCKBANK - TOOLERN LOOP (VIA MT COTTRELL AND PLUMPTON)	LD124	-	-	-	-	-
ROCKBANK RS - ROCKBANK WEST (VIA PLUMPTON)	C1118	-	-	-	-	-
CAROLINE SPRINGS - TOOLERN RS (VIA ROCKBANK RS)	C1104	-	-	-	-	-
TOOLERN - MELTON LOOP (COMPLETE)	LD132	-	-	-	-	-
TOOLERN RS - TOOLERN EAST RS (VIA SOUTHERN TOOLERN)	C1121	-	-	-	-	-
TOOLERN - MELTON LOOP (COMPLETE)	LD132	-	-	-	-	-
TOOLERN RS - TOOLERN EAST RS (VIA NORTHERN TOOLERN)	C1120	-	-	-	-	-
<b>TOTAL</b>		<b>131</b>	<b>139</b>	<b>191</b>	<b>84</b>	<b>545</b>

Description	Bus Route	AM	IP	PM	OP	DAILY
WERRIBEE - ROCKBANK	2SM7	-	-	-	-	-
MELTON RS - PLUMPTON (VIA TOOLERN RS)	2SM130	167	194	195	83	639
TOOLERN - ROCKBANK LOOP (VIA MT COTTRELL AND PLUMPTON)	2LD124	-	-	-	-	-
ROCKBANK WEST - ROCKBANK RS (VIA PLUMPTON)	2C1118	-	-	-	-	-
TOOLERN RS - CAROLINE SPRINGS (VIA ROCKBANK RS)	2C1104	-	-	-	-	-
MELTON - TOOLERN LOOP (COMPLETE)	2LD132	-	-	-	-	-
TOOLERN EAST RS - TOOLERN RS (VIA SOUTHERN TOOLERN)	2C1121	-	-	-	-	-
MELTON - TOOLERN LOOP (COMPLETE)	2LD132	-	-	-	-	-
TOOLERN EAST RS - TOOLERN RS (VIA NORTHERN TOOLERN)	2C1120	-	-	-	-	-
<b>TOTAL</b>		<b>167</b>	<b>194</b>	<b>195</b>	<b>83</b>	<b>639</b>

## Bus Boardings (2 way volumes)

Description	Bus Route	AM	IP	PM	OP	DAILY
ROCKBANK - WERRIBEE	SM7	-	-	-	-	-
PLUMPTON - MELTON RS (VIA TOOLERN RS)	SM130	298	333	386	166	1,184
ROCKBANK - TOOLERN LOOP (VIA MT COTTRELL AND PLUMPTON)	LD124	-	-	-	-	-
ROCKBANK RS - ROCKBANK WEST (VIA PLUMPTON)	C1118	-	-	-	-	-
CAROLINE SPRINGS - TOOLERN RS (VIA ROCKBANK RS)	C1104	-	-	-	-	-
TOOLERN - MELTON LOOP (COMPLETE)	LD132	-	-	-	-	-
TOOLERN RS - TOOLERN EAST RS (VIA SOUTHERN TOOLERN)	C1121	-	-	-	-	-
TOOLERN - MELTON LOOP (COMPLETE)	LD132	-	-	-	-	-
TOOLERN RS - TOOLERN EAST RS (VIA NORTHERN TOOLERN)	C1120	-	-	-	-	-
<b>TOTAL</b>		<b>298</b>	<b>333</b>	<b>386</b>	<b>166</b>	<b>1,184</b>

## Train Boardings

Train Line	Station	AM	IP	PM	OP	DAILY
Melton Line	Sunshine	3,727	3,756	2,350	1,276	11,109
	Ardeer	166	232	71	60	529
	Deer Park	2,799	2,443	433	594	6,268
	Caroline Springs	1,321	914	73	216	2,525
	Rockbank	1,111	1,052	176	258	2,597
	Toolern Road	746	642	146	167	1,702
	Melton	7,743	6,520	701	1,667	16,630
<b>TOTAL</b>		<b>17,613</b>	<b>15,559</b>	<b>3,950</b>	<b>4,237</b>	<b>41,360</b>

Period	Time
AM	7am - 9am
IP	9am - 3pm
PM	3pm - 6pm
OP	6pm - 7am

Figure 37

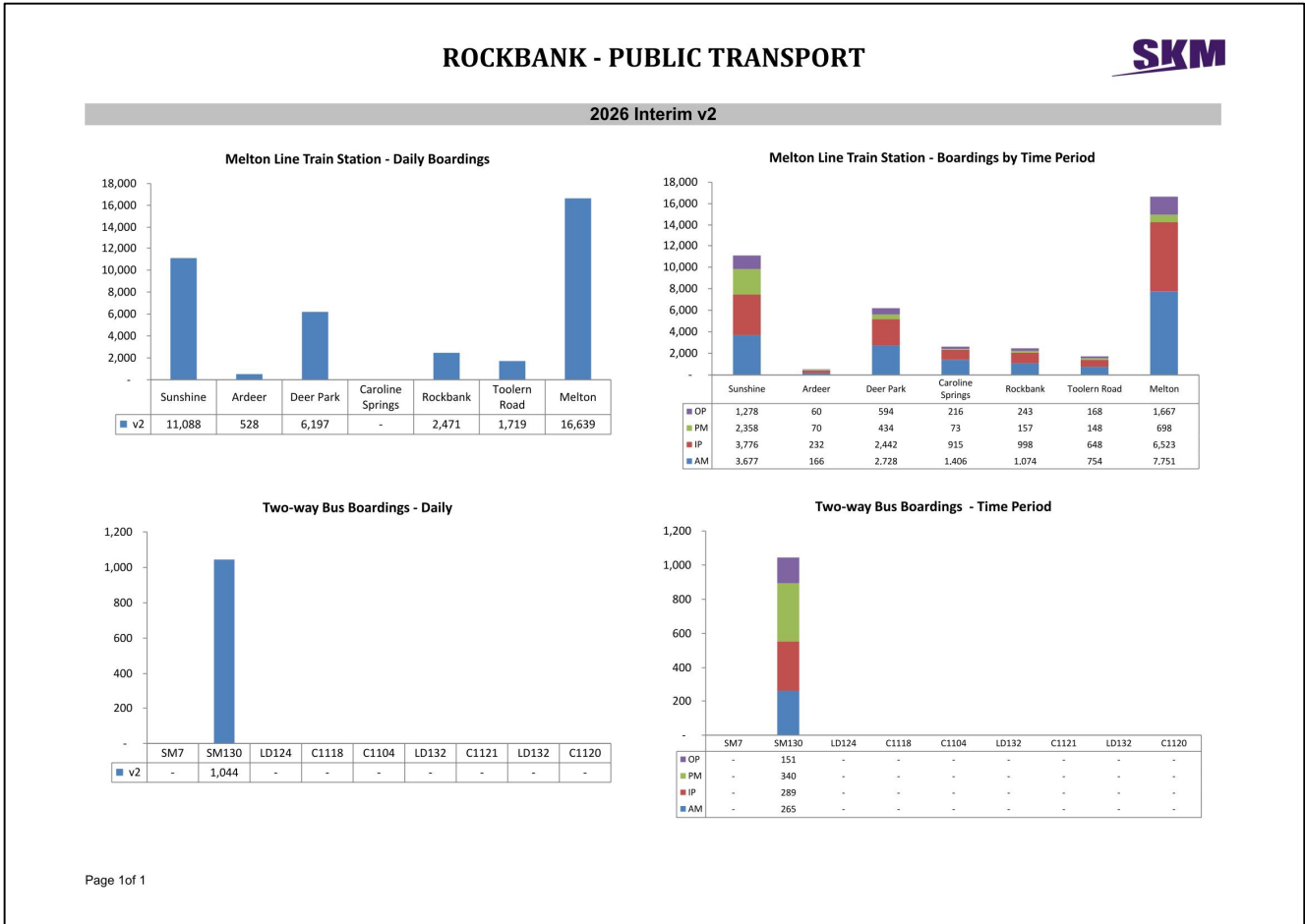




Figure 38

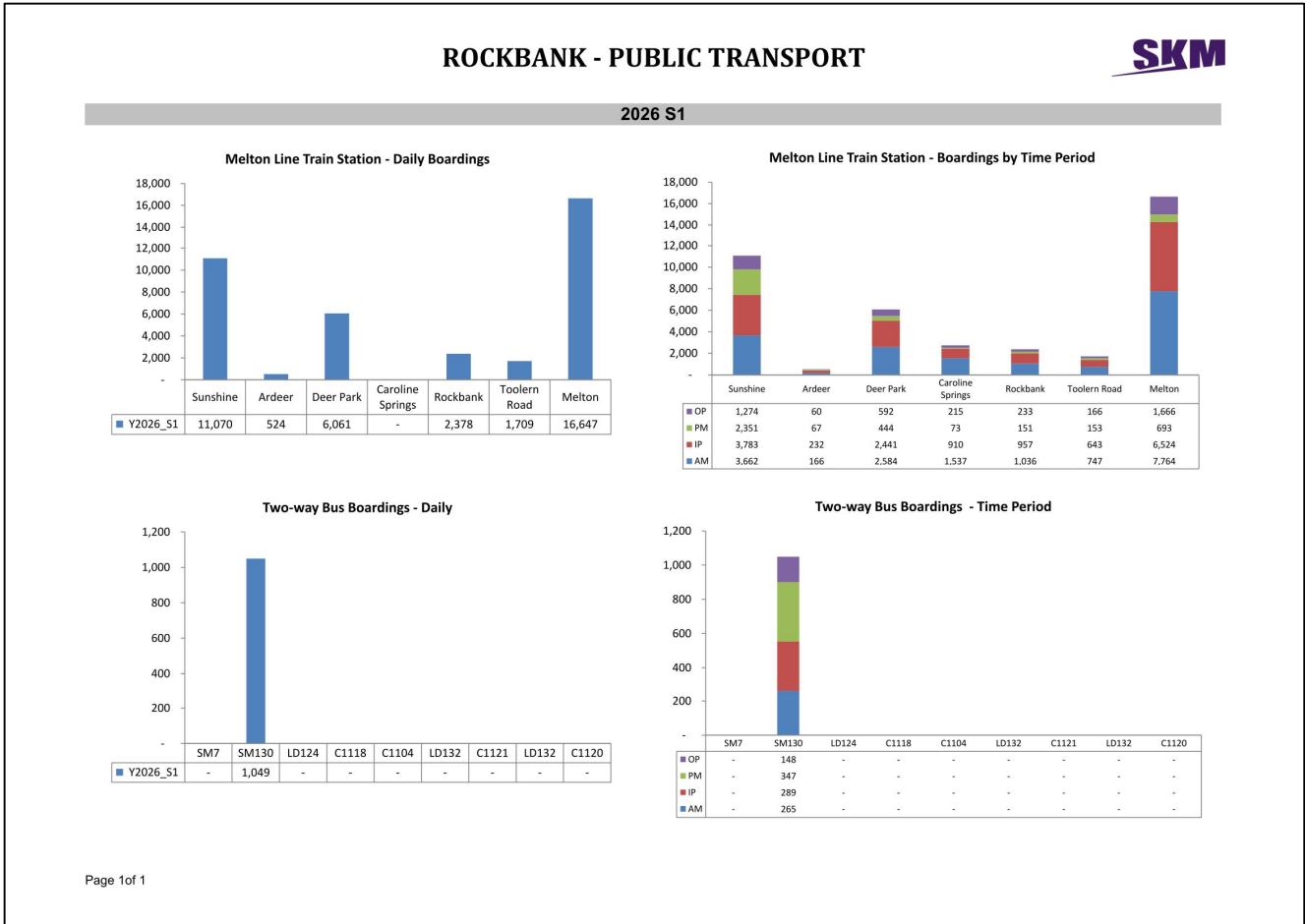


Figure 39

