



## SECTION 04 | RETIREMENT







20 0 20 40 60 80 100 120m

Scale (A3) 1:2000



- Kitchen/residents vegetable garden
- Water feature to clubhouse entry
- Informal family seating area
- Seasonal plant
- Planted arbour promenade
- Small wall with directional signage at entry

- Grassed area for informal family/child play
- Playground
- Planted arbour
- Outdoor bistro area
- Activity area with tennis court and bowling green
- Small wall with directional signage
- Shade structure in similar style club house patio

- Kitchen/residents' vegetable garden
- Small gardens to units
- Garden displaying seasonal trees and planting
- Feature tree and formal planting to entry

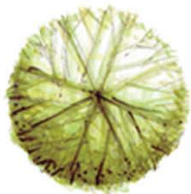




Street tree



Small tree



Medium shrub



Garden bed



Grass



Scale (A3) 1:200



Garden Option B - Villa fully planted to front and side. Lawn and trees to rear garden only. Planting design and installation to rear by residents.

Street tree




Small tree





Medium shrub

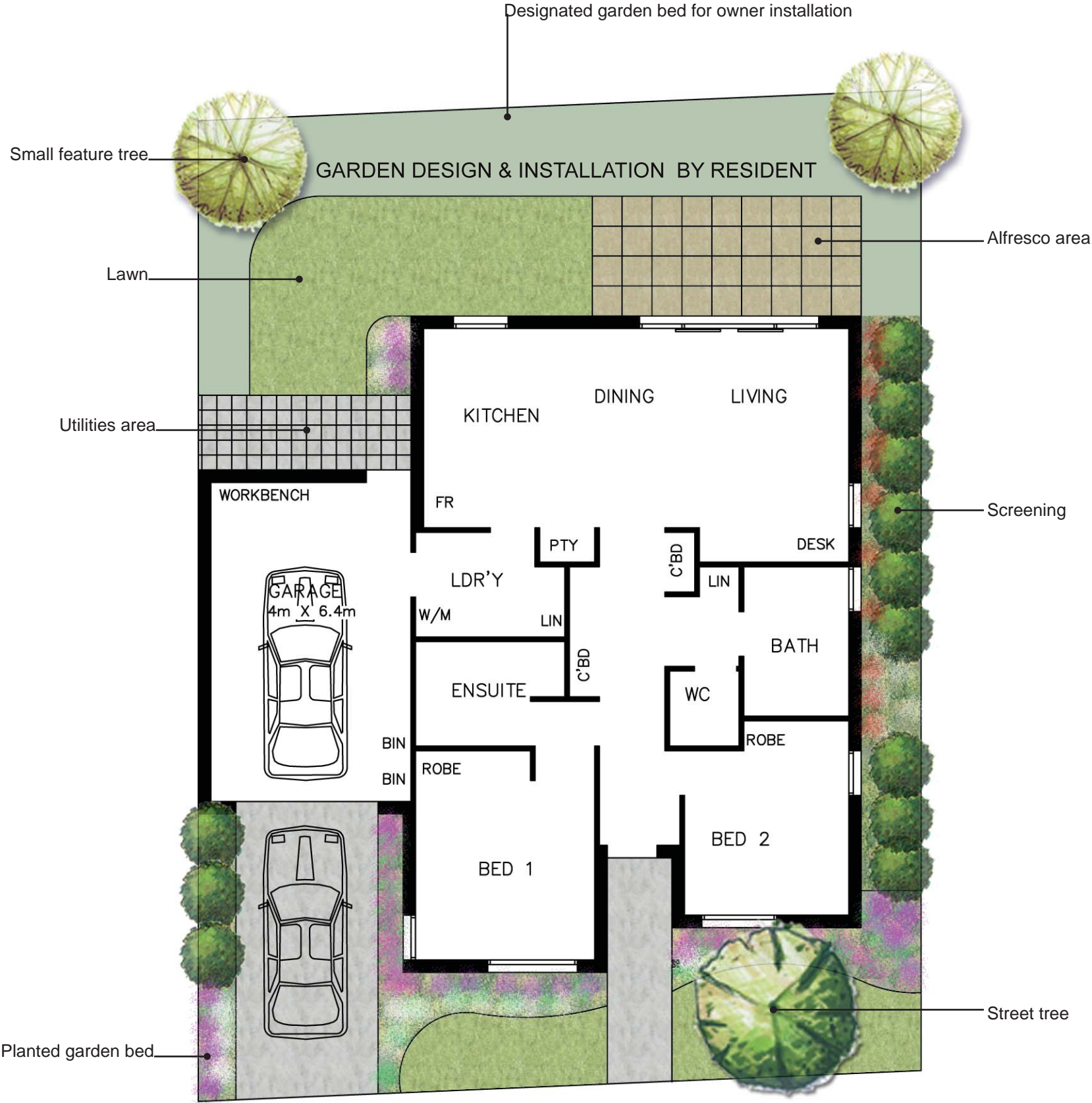



Garden bed




Grass





Scale (A3) 1:200



Garden Option C - Villa fully planted to front only. Rear garden with feature tree and lawn only, garden to rear and side for resident to design and install.

Street tree



Small tree



Medium shrub



Garden bed



Grass



Scale (A3) 1:200





## PLANT SCHEDULE

	CODE	BOTANICAL NAME	COMMON NAME	HEIGHT x WIDTH
TREES				
	A.f.	<i>Acer x freemanii</i> 'Jeffersred'	Jeffersred Maple	12 x 8
	A.p.	<i>Acer platanoides</i> 'Crimson Sentry'	Crimson Maple	7 x 4 m
	C.c.	<i>Cercis canadensis</i>	Forest Pansy	5 x 5 m
	C.ca.	<i>Cornus capitata</i>	Evergreen Dogwood	8 x 6 m
	G.t.	<i>Gleditzia triacanthos</i>	Honey Locust	6 x 4 m
	H.f.	<i>Hymenosporum flavum</i>	Native Frangipani	8 x 3 m
	J.m.	<i>Jacaranda mimosifolia</i>	Jacaranda	6 x 4 m
	L.i.	<i>Lagerstroemia indica</i>	Crepe Myrtle	7 x 5 m
	M.i.	<i>Malus ioensis</i> 'Plena'	Crab Apple	5 x 3 m
	M.s.	<i>Magnolia x soulangeana</i>	Saucer Magnolia	5 x 5 m
	P.s.	<i>Prunus serrata</i> 'Weeping Form'	Weeping cherry	3 x 2 m
	P.b.	<i>Pyrus betulaeifolia</i> 'Southworth Dancer'	Ornamental Pear	7 x 4 m
	T.l.	<i>Tristanopsis laurina</i>	Kanooka	6 x 5 m
	U.p.	<i>Ulmus parvifolia</i> 'Todd'	Chinese Elm	10 x 8 m
	Z.s.	<i>Zelkova serrata</i> 'Green Vase'	Japanese Zelkova	15 x 10 m
LARGE SHRUBS ( > 1.8m)				
	A.s.	<i>Acmena smithii</i> 'Minor'	Dwarf Lilly Pilly	5 x 2 m
	A.f.	<i>Agonis flexuosa</i> 'After Dark'	Burgundy Willow Myrtle	6 x 3 m
	C.s.	<i>Camellia sasanqua</i>	Sasanqua Camellia	5 x 3 m
	P.m.	<i>Philotheca myoporoides</i>	Long-Leaf Wax Flower	2 x 2 m
	P.g.	<i>Photinia glabra</i>	Photinia	3 x 2.5 m
	V.t.	<i>Viburnum tinus</i>	Viburnum	3 x 2 m
MEDIUM SHRUBS (1 - 1.8m)				
	C.L.J.	<i>Callistemon</i> 'Little John'	Little John Bottlebrush	1.2 x 1 m
	C.t.	<i>Choisya temata</i>	Mexican Orange Blossom	1.2 x 1.2 m
	C.p.	<i>Correa pulchella</i>	Salmon Native Fuschia	1 x 1 m
	M.p.	<i>Murraya paniculata</i>	Orange Jessamine	1.8 x 1.5 m
	R.d.	<i>Raphiolepis x delacourii</i>	Indian Hawthorn	1.8 x 2 m
	W.W.G.	<i>Westringia</i> 'Wynyabbie Gem'	Native Rosemary	1.5 x 1.5 m
SMALL SHRUBS & STRAPPY-LEAFED PLANTS (0.3 - 1m)				
	A.c.	<i>Acacia cognata</i> 'Limelight'	Limelight Dwarf Limelight	1 x 1 m
	A.m.	<i>Azalea magnifica</i> 'Alba'	White Azalea	0.7 x 0.7 m
	B.h.	<i>Boronia heterophylla</i>	Boronia	1 x 0.8 m
	C.cn.	<i>Convolvulus cneorum</i>	Silver Bush	0.8 x 0.8 m
	C.O.G.	<i>Correa pulchella</i> 'Orange Glow'	Orange Glow Correa	0.4 x 0.4 m
	C.r.	<i>Cycas revoluta</i>	Cycad	1 x 1 m
	D.o.	<i>Daphne odora</i>	Daphne	1 x 1 m
	D.c.	<i>Dianella caerulea</i> 'Little Jess'	Blue Flax Lily	0.3 x 0.3 m
	D.b.	<i>Dietes bicolor</i>	Fortnight Lily	1 x 1 m
	D.g.	<i>Dietes grandiflora</i>	Wild Iris	1 x 1 m
	E.P.P.	<i>Escallonia</i> 'Pink Pixi'	Dwarf Escallonia	0.6 x 0.6 m
	L.m.	<i>Liriope muscari</i> 'Evergreen Giant'	Large Liriope	1 x 1 m
	L.T.	<i>Lomandra</i> 'Tanika'	Dwarf Lomandra	0.6 x 0.4 m
	M.c.	<i>Metrosideros collina</i> 'Tahini'	Dwarf Metrosideros	1 x 1 m
	R.S.M.	<i>Raphiolepis</i> 'Snow Maiden'	Raphiolepis	0.5 x 0.5 m
	S.r.	<i>Strelitzia reginae</i>	Bird of Paradise	1 x 1 m
LOW PLANTS, GROUND COVERS & CLIMBERS (< 0.3)				
	C.ro.	<i>Carpobrotus rossii</i>	Pigs Face	0.2 x 2 m
	J.c.	<i>Juniperus conferta</i>	Shore Juniper	0.6 x 1 m
	V.h.	<i>Viola hederacea</i>	Native Violet	0.2 x 1 m