

LEGEND

- Acer rubrum 'October Glory'
- Corymbia maculata
- Melia azedarach
- Eucalyptus scoparia
- Eucalyptus radiata
- Lagerstroemia indica x L. fauriei 'Yuma'
- Platanus x acerifolia
- Ulmus parvifolia 'Todd'
- Tristaniopsis laurina
- Pyrus calleryana 'Chanticleer'



Acer rubrum 'October Glory'



Corymbia maculata



Melia azedarach



Eucalyptus scoparia



Eucalyptus radiata



Lagerstroemia indica x L. fauriei 'Yuma'



Tristaniopsis laurina



Platanus x acerifolia



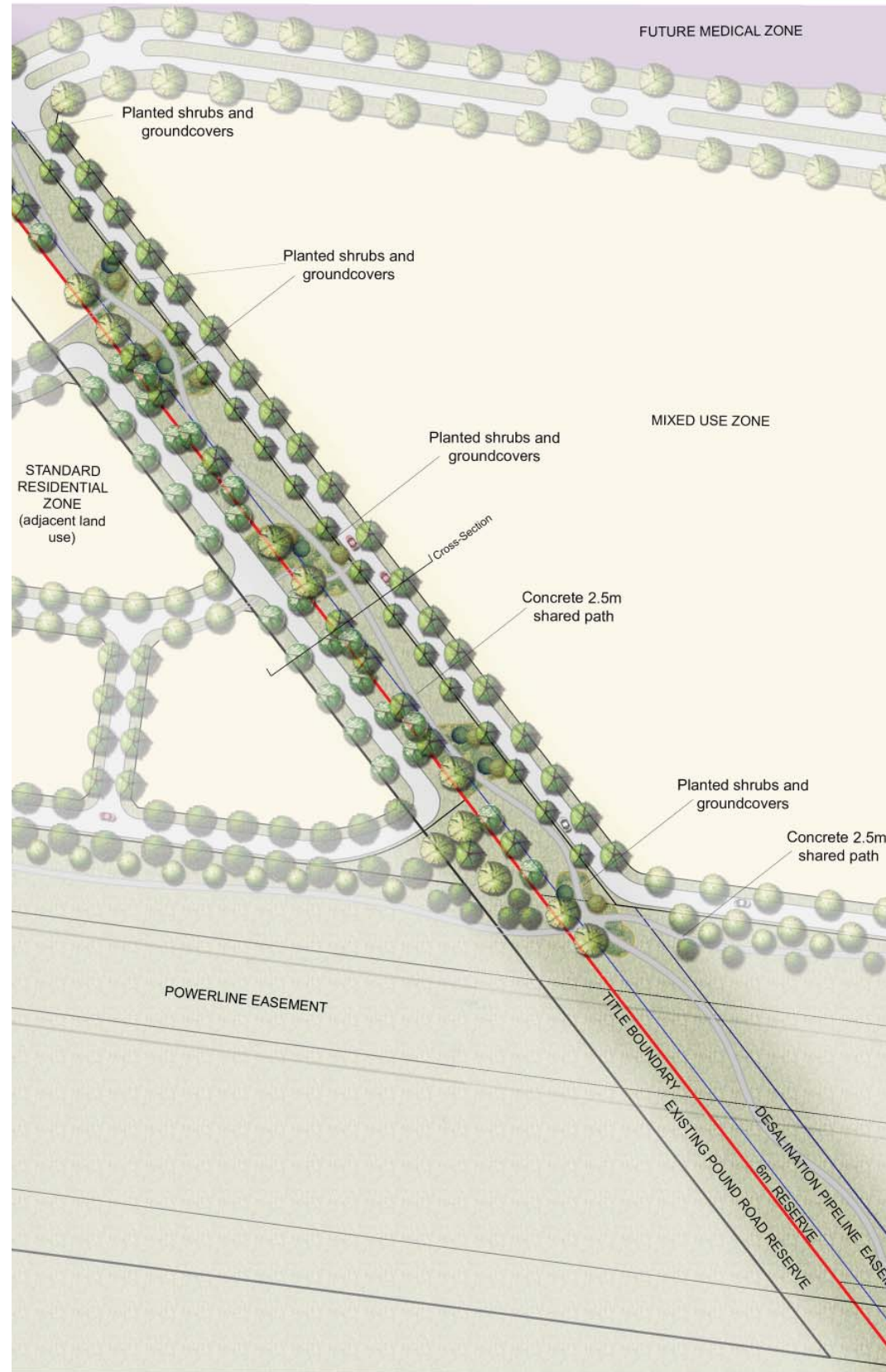
Pyrus calleryana 'Chanticleer'



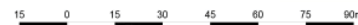
Ulmus parvifolia 'Todd'



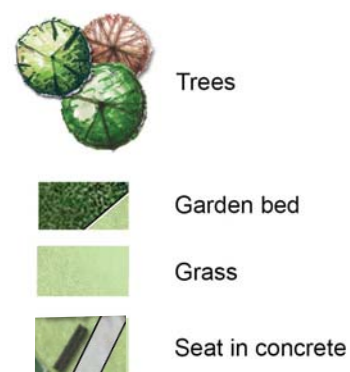
Scale (A3) 1:8000



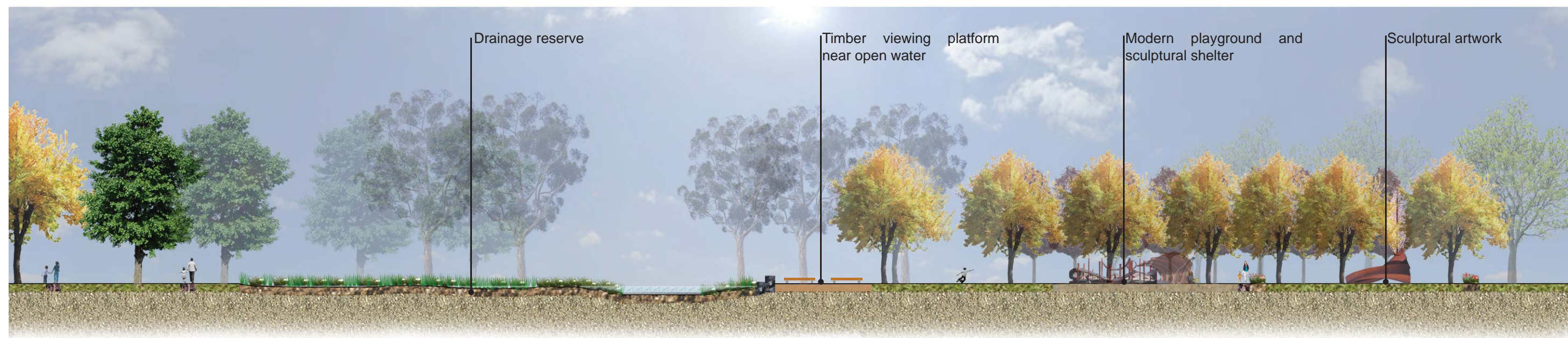
Desalination Easement Indicative Landscape Plan



Desalination Easement Indicative Section

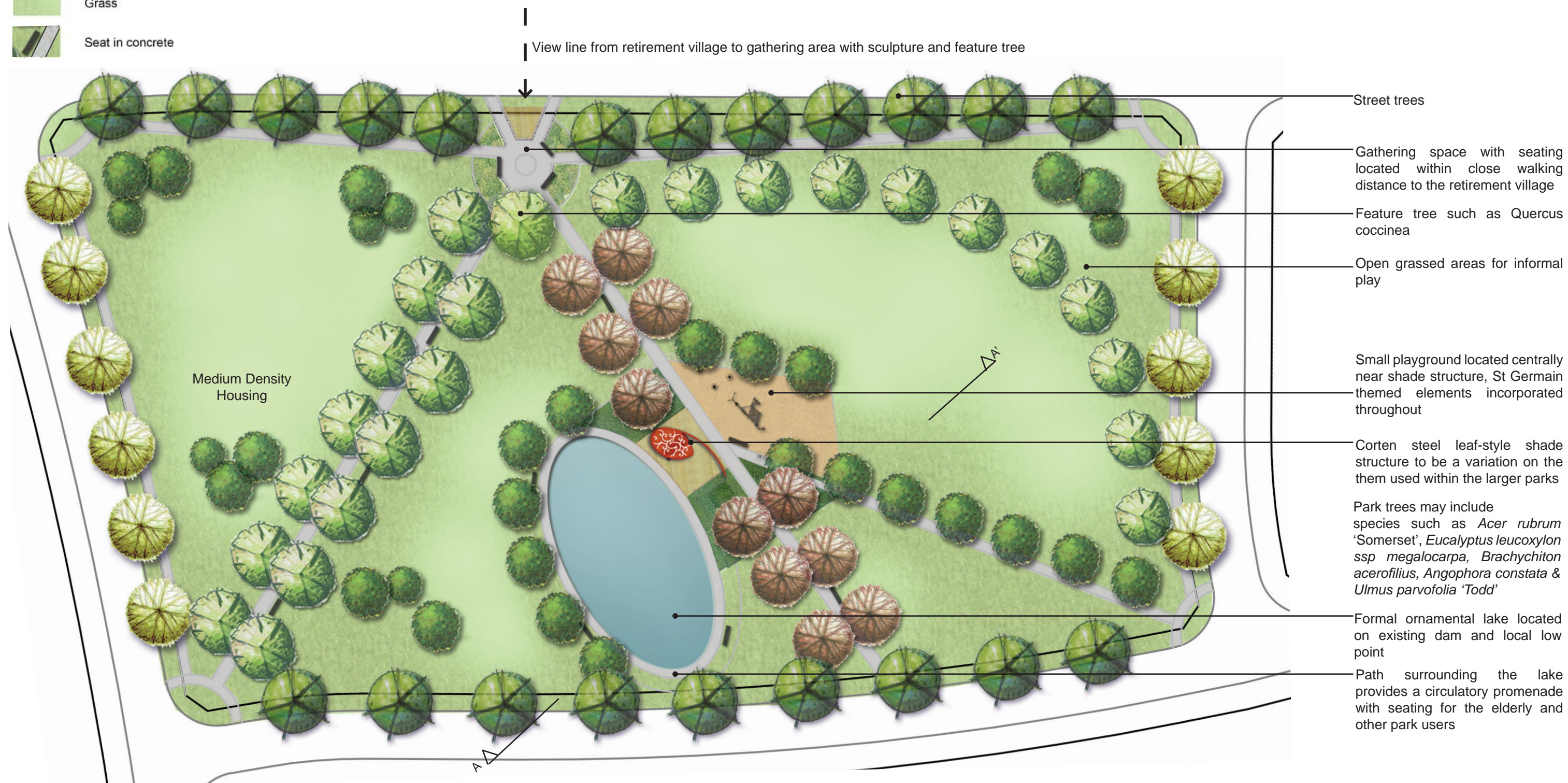
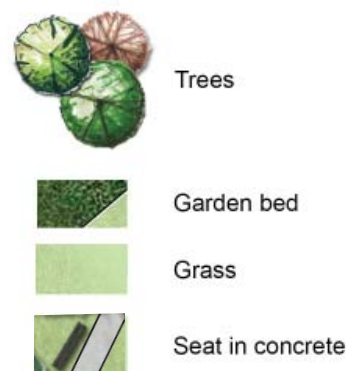


Scale (A3) 1:400

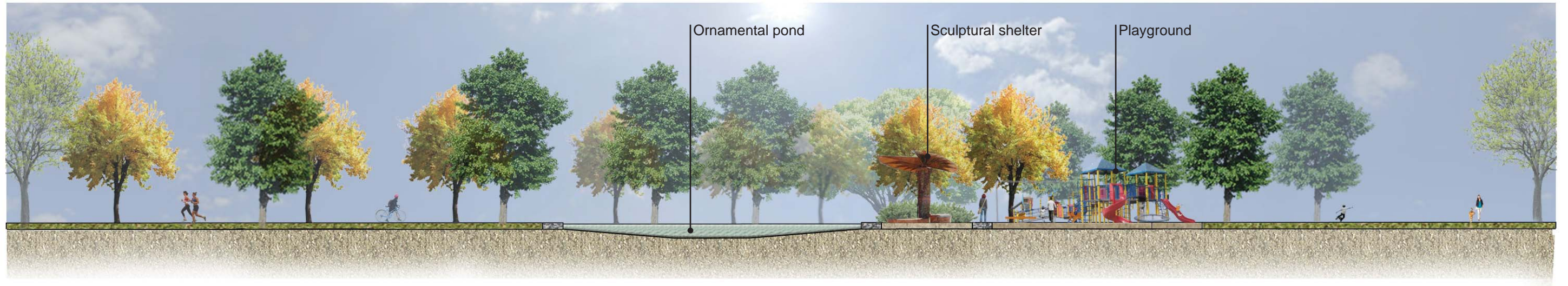


Section A-A'









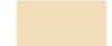




Scale (A3) 1:500

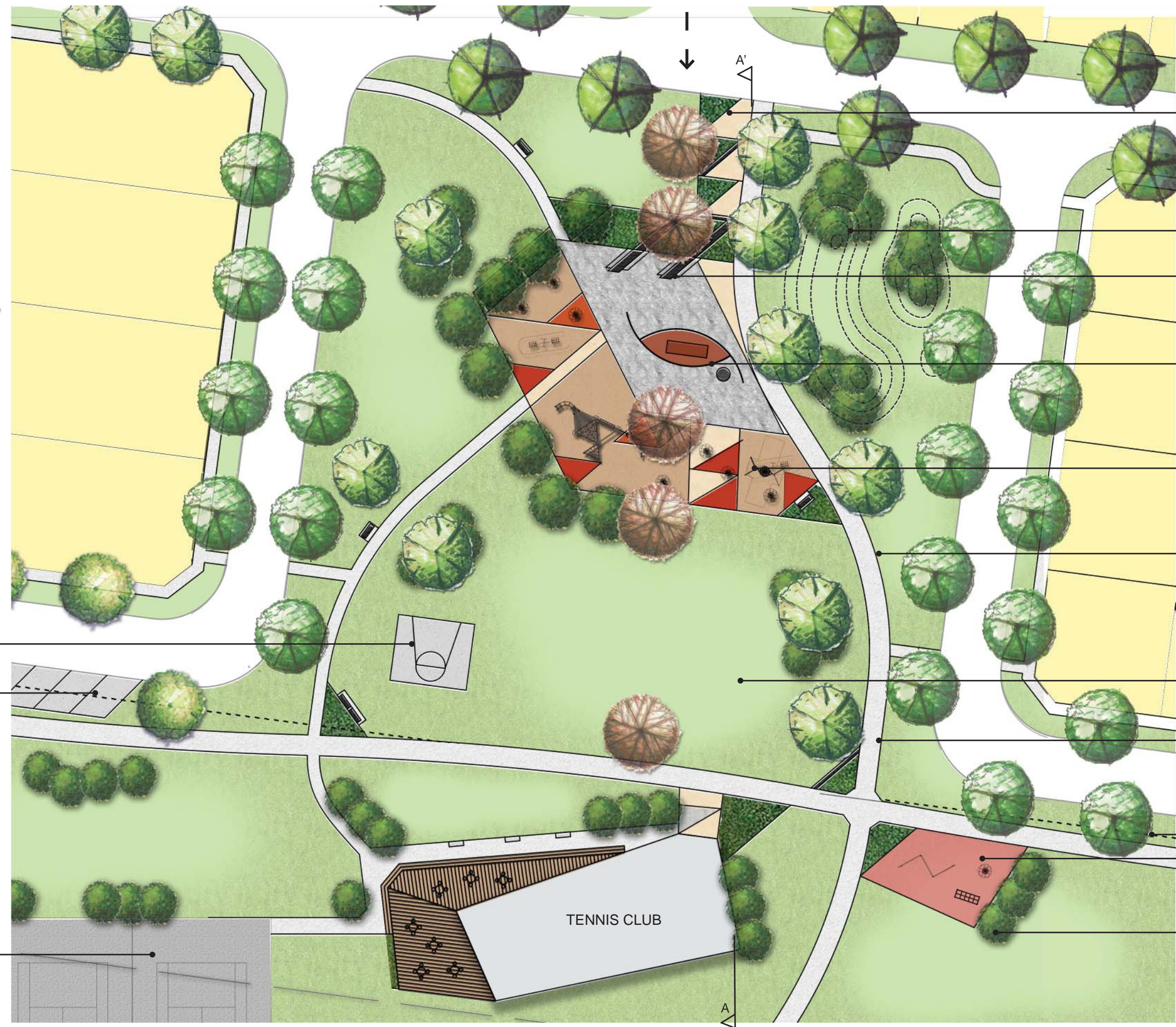


Section A-A'



View line from St Germain Village to sculptural shelter & tennis club house beyond

-  Trees
-  Garden bed
-  Grass
-  Seat in concrete
-  Feature paving
-  Concrete
-  Exposed aggregate/feature paving
-  Rubber matting
-  Mulch softfall



- Feature geometric paving and raised garden beds with seating walls consistent with St Germain Village theming. Trees are a continuation of Green Link street *Acer rubrum* 'October Glory' to the north
- Treed grassed mounds for informal play
- Picnic area with seating & BBQ facilities on feature paving to match St Germain Village materials
- Sculptural shelter with reference to the entry sculpture of St Germain theme
- Modern-style play equipment with geometric rubber matting & mulch softfall
- Park trees may include species such as *Eucalyptus leucoxylon* ssp *megalocarpa*, *Brachychiton acerofilius*, *Angophora constata*
- Open grassed area for informal play
- Shared path to St Germain Village via Green Link street to the north
- Powerline easement boundary
- Fitness equipment on rubber matting along shared path within powerline easement
- Low planting (3m high max) within powerline easement

- Basketball key
- Off-street carparks x12
- Tennis courts x3 within powerline easement

Scale (A3) 1:500



Section A-A'



