



Simon Scott  
Principal Ecologist  
Ecolink Consulting Pty Ltd  
PO Box 356  
Northcote VIC 3070

Our Reference: 1097

28 January 2014

Alexandrea Malishev  
Senior Precinct Structure Planner  
Metropolitan Planning Authority  
Level 29, 35 Collins Street  
Melbourne VIC 3000  
Via email: [Alexandrea.Malishev@gaa.vic.gov.au](mailto:Alexandrea.Malishev@gaa.vic.gov.au)

Dear Alexandra,

**Re: Scattered Tree Assessment within the Berwick Waterways Precinct Structure Plan Area (9).**

Ecolink Consulting Pty Ltd was engaged by the Metropolitan Planning Authority to undertake a 'scattered tree assessment' within Precinct Structure Plan (PSP) Area 9: Berwick Waterways (Figure 1).

This Precinct was created as a result of the extension of the Urban Growth Boundary through Amendment V68 passed by the Victorian Government in July 2010. PSP 9 covers an area of approximately 85 ha and is expected to support a residential community of approximately 1,000 dwellings.

It is understood that the majority of the PSP has already been assessed. The current contract (COR/13/9475) requires that the approximately two trees are assessed from within private property located at 357–359 Centre Road, Berwick (as shown in Figure 1).

The purpose of the assessment is to identify trees that require further consideration by the MPA when gaining planning approvals and designing development plans. Indigenous trees will require vegetation offsets in accordance with Melbourne's Biodiversity Conservation Strategy (DEPI 2013a; b) if they are to be removed.

## Methods

### Access

Access was provided by James Melzak over the phone on 8 January 2014. The field assessment was undertaken on 9 January 2014 by two qualified ecologists; Simon Scott and Dr Stuart Cooney. Both assessors have more than ten years' experience undertaking ecological surveys, and the author is accredited with a Vegetation Quality Competency Check (HH015).

### Tree Assessment

Two trees within one private property (Parcel PFI 3021895) were assessed as stated in the Request for Quotation (RFQ). The data was collected using hand-held Personal Digital Assistant loaded with ArcPad 8.1 software and the Department of Environment and Primary Industries (DEPI) 'ST\_Locn' GIS database.

Point files for all indigenous trees were collected in GDA\_1994\_VICGRID94 format. The following metrics were recorded in the field (with GIS field name in parentheses, and bold items provided in an ESRI point shapefile):

- **The date of the survey (HH\_Date);**
- **Identification of the surveyor (HH\_PI);**
- **Identity of the tree (sequential number that corresponds with the mapping);**
- **The location of the tree (decimal degrees, northings and eastings);**
- **The location of the tree (property identifier: HH\_PAI);**
- The tree's species (common name)
- **The tree's species (binomial name: SP);**
- The tree's Diameter at Breast Height; and,
- **The tree's size class (VL, LT, MT, S).**

### Data Management and Mapping

The data collected by Ecolink Consulting was reviewed internally for quality assurance purposes. Data was checked against the requirements specified within the Time Stamping Vegetation Mapping and Condition Assessment Procedures (DSE 2010). Once completed, the files were then sent to DEPI on 28 January 2014 for a secondary review. On ... DEPI advised that the data was accepted.

## Results

One indigenous tree (tree 1) and two non-indigenous trees (trees 2 and 3) were recorded within the area assessed (Figure 2, Table 1). The indigenous tree was a River Red-gum *Eucalyptus camaldulensis*, while both non-indigenous trees were unable to be identified to species level. It was concluded that they are an unidentifiable *Eucalyptus* species and has been planted within the area, and further attempts to key these trees out to species level were not undertaken.

Vegetation offsets for indigenous trees is \$13,218.00 per tree in accordance with Melbourne's Biodiversity Conservation Strategy and the Habitat Compensation Fees (DEPI 2013a; b). The

## Scattered Tree Assessment, PSP 9 Berwick Waterways

total vegetation offsets for the removal of all indigenous trees recorded during the current assessment is therefore \$13,218.00.

I trust the above is clear, but please call me if you have any queries (mobile phone no: 0422 623 144).

Kind regards,

A handwritten signature in blue ink, appearing to read 'Simon Scott', on a white rectangular background.

Simon Scott  
Principal Ecologist  
Ecolink Consulting Pty Ltd

### References

- DEPI (2013a). 'Biodiversity Conservation Strategy for Melbourne's Growth Corridors.' (Department of Environment and Primary Industries: Melbourne).
- DEPI (2013b). 'Habitat Compensation under the Biodiversity Conservation Strategy.' (Department of Environment and Primary Industries: Melbourne).
- DSE (2010). 'Time Stamping Project 2010/11: Vegetation mapping and condition assessment procedures.' Department of Sustainability and Environment, Melbourne.
- Standards Australia (2009). 'Australian Standard: Protection of trees on development sites (AS 4970 - 2009).' (Standards Australia: Sydney).

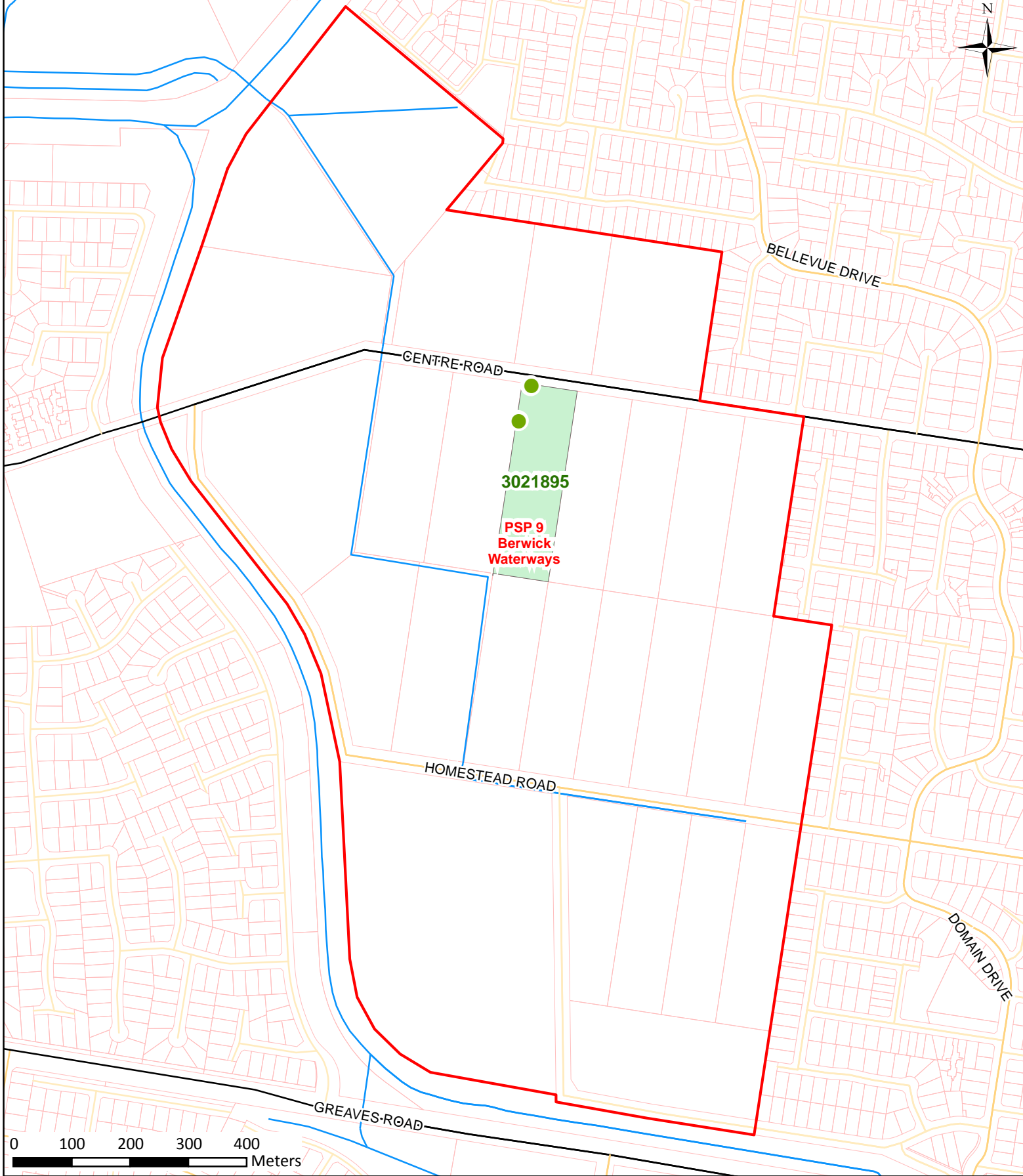
# Scattered Tree Assessment, PSP 9 Berwick Waterways

**Table 1.** Indigenous trees recorded within the study area

Tree No	Address	Parcel PFI	Map Reference (Fig 1)	Common Name	Species Name	Provenance	DBH (cm)	Size Class*	Tree Protection Zone Radius (m)**
1	357-359 Centre Rd, Berwick	3021895	B4	River Red-gum	<i>Eucalyptus camaldulensis</i>	Indigenous	95	Large	11.4
2	357-359 Centre Rd, Berwick	3021895	C3	Unidentifiable Eucalypt	<i>Eucalyptus</i> sp.	Non-indigenous	56	N/A	6.72
3	357-359 Centre Rd, Berwick	3021895	C3	Unidentifiable Eucalypt	<i>Eucalyptus</i> sp.	Non-indigenous	82	N/A	9.84

\*Size class is based on the observed size of the tree compared against the Large Tree DBH EVC Benchmark from which the tree is likely to have originated - Small <75%, Medium 75% - 99%, Large 100% to 150%, Very Large >150%. A size class for non-indigenous trees is Not Applicable (N/A).

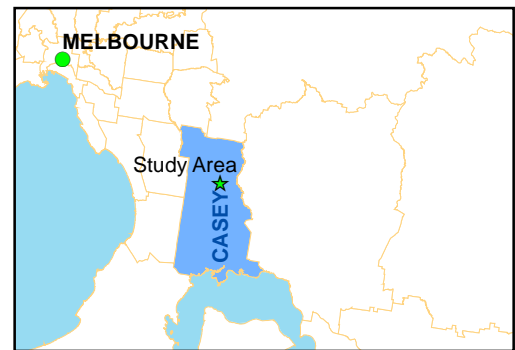
\*\*The radius of the Tree Protection Zone is 12 times the DBH up to a maximum of 15 metres (Standards Australia 2009).



**Figure 1:** Location of the study area and parcels assessed.

PSP 9  
Berwick Waterways

- Legend**
- PSP Boundary
  - Parcel PFI
  - Trees Nominated for Assessment



**Figure 2:** Location and species of scattered trees assessed during the current assessment

PSP 9  
Berwick Waterways

- Legend**
- PSP Boundary
  - Parcels Assessed
  - Tree Nominated for Assessment
- Tree Species Assessed**
- Eucalyptus camaldulensis*
  - Non-indigenous *Eucalyptus* species

