



PSP 1059 Beveridge North West Post-Contact Heritage Assessment

HV REPORT # 4372

SPONSOR:

Metropolitan Planning Authority

February 2014

AHMS
ARCHAEOLOGICAL & HERITAGE
MANAGEMENT SOLUTIONS



PSP 1059 Beveridge North West, Post-Contact Heritage Assessment

HV Report # 4372

February 2014

Sponsor: Metropolitan Planning Authority

Authors: Emma Rae and Simon Crocker

**Prepared by Archaeological & Heritage Management Solutions (AHMS)
Pty Ltd on behalf of Metropolitan Planning Authority**



AUTHOR	Emma Rae
PROPONENT	Metropolitan Planning Authority
PROJECT NAME	PSP 1059 Beveridge North West Post-Contact Heritage Assessment
REAL PROPERTY DESCRIPTION	See Table 1
DATE	25/2/2014

AHMS INTERNAL REVIEW/SIGN OFF				
WRITTEN BY	DATE	VERSION	REVIEWED	APPROVED
Emma Rae	17/10/13	Draft 1	Jim Wheeler	18/10/13
		Final 1	Jim Wheeler	13/12/13
		Final 2	Cathryn Barr	25/2/14

Copyright and Moral Rights

Historical sources and reference materials used in the preparation of this report are acknowledged and referenced in figure captions or in text citations. Reasonable effort has been made to identify, contact, acknowledge and obtain permission to use material from the relevant copyright owners.

Unless otherwise specified in the contract terms for this project AHMS:

- Vests copyright of all material produced by AHMS (but excluding pre-existing material and material in which copyright is held by a third party) in the client for this project (and the client's successors in title);
- Retains the use of all material produced by AHMS for this project for AHMS ongoing business and for professional presentations, academic papers or publications.

ARCHAEOLOGICAL & HERITAGE MANAGEMENT SOLUTIONS

ABN 45 088 058 388
ACN 088 058 388

www.ahms.com.au
info@ahms.com.au

SYDNEY
2/729 Elizabeth St
Waterloo NSW 2017
P 02 9555 4000
F 02 9555 7005

MELBOURNE
2/35 Hope St
Brunswick VIC 3056
P 03 9388 0622

PERTH
13/336 Churchill Ave
Subiaco WA 6008
P 08 9381 5206

CONTENTS

EXECUTIVE SUMMARY	5
1 INTRODUCTION.....	8
1.1 Background	8
1.2 Project Location	8
1.3 Aims and Scope of Work.....	10
1.3.1 Aims	10
1.3.2 Scope of Work.....	10
1.4 Methodology.....	10
1.4.1 Primary and Secondary Sources Reviewed	11
1.4.2 Stakeholder Consultation	11
1.4.3 Field Survey Methodology.....	11
1.4.4 Significance Evaluation	11
1.5 Report Format.....	12
1.6 Authorship	12
1.7 Report Submission.....	12
2 HERITAGE LEGISLATION	13
2.1 The Heritage Act 1995 (Victoria).....	13
2.2 Victorian Heritage Register	13
2.3 Victorian Heritage Inventory.....	13
2.4 The Planning Environment Act 1987 & Planning Schemes Act 1996 (Victoria).	14
2.5 City of Mitchell - Local Planning Policy	14
2.6 Current Status	16
3 ENVIRONMENTAL BACKGROUND.....	17
3.1 Landscape Characteristics.....	17
3.2 Vegetation	19
4 HISTORICAL BACKGROUND.....	21
4.1 Preamble	21
4.2 Thematic History	24
4.2.1 First Contact and European Settlement.....	25
4.2.2 Settling the Land and Migration	27
4.2.3 Governing and Administration.....	28
4.2.4 Utilising natural resources.....	29
4.2.5 Connecting Communities	29
4.3 Site Specific Use and Occupation.....	30
4.4 Predictive Model for Study Area.....	38
5 PREVIOUS STUDIES	39
5.1 Broad Studies.....	39

5.1.1	Mitchell Shire Stage One Heritage Study, 2002	39
5.1.2	Mitchell Shire Stage Two Heritage Study Vol. 1-5, 2006.....	39
5.1.3	The Mitchell Shire Heritage Amendment - Review of heritage precincts, 2012	39
5.1.4	Mitchell Shire Stage 2 Heritage Study Review, 2013.	39
5.2	Detailed Assessments.....	40
5.2.1	Mandalay Estate, Precinct 1 Beveridge, Archaeological and Heritage Assessment 2006	40
5.2.2	An Archaeological Assessment at 2140 Merriang Road Beveridge, 2007	40
5.2.3	An archaeological Survey: "Oakfield" Stewart Street, Beveridge, 2004	40
6	ARCHAEOLOGICAL SURVEY	41
6.1	Preamble	41
6.2	Results	42
7	CONCLUSIONS.....	47
7.1	Discussion	47
8	HERITAGE SIGNIFICANCE	47
8.1	Scientific Significance Assessment.....	48
8.1.1	Method	48
8.1.2	Evaluation.....	49
8.2	Heritage Victoria Significance Assessment Criteria.....	49
8.2.1	Themes and Criteria.....	49
8.2.2	Dry Stone Enclosure One	50
8.2.3	Dry Stone Enclosure Two	50
8.2.4	Dry Stone Wall	50
8.3	Overall significance ratings	51
8.3.1	Relevant significant thresholds for the study area	51
9	RECOMMENDATIONS.....	53
9.1	Dry Stone Walls.....	53
9.2	Contingency Plans	53
	REFERENCES.....	54

LIST OF TABLES

Table 1: Properties within the Study Area.....	8
Table 2: Scientific Significance Ratings	49
Table 3: Dry Stone Enclosure One - Cultural Heritage Significance	50
Table 4: Dry Stone Enclosure Two- Cultural Heritage Significance	50
Table 5: Dry Stone Wall - Cultural Heritage Significance	50
Table 6: Overall significance rating	51

LIST OF FIGURES

Figure 1: Location of the Study Area	9
Figure 2: Geology in the study area	18
Figure 3: Predicted vegetation in the Study area in 1750 and 2005	20
Figure 4: The portion of the study area within the Darraweit Guim Parish is outlined in red Source: Victorian Department of Crown Lands and Survey, 1956, Darraweit Guim, County of Bourke	22
Figure 5: The portion of the study area within the Merriang Parish Source: Victorian Department of Crown Lands and Survey, 1956, Merriang, County of Bourke	23
Figure 6: 1856 Geological map of the northern portion of the study area Source: Parts of parishes of Darraweit Guim, Kalkallo, Mickleham and Bolinda [cartographic material] / surveyed, engraved and published under the direction of Alfred R. C. Selwyn, Govt. Geologist at the Geological Survey Office, Melbourne ; geologically surveyed by Norman Taylor, Assistant Geologist, 1856 ; hills lithographed by R. Shepherd	31
Figure 7: 1956 Geological map of the southern portion of the activity area Source: Parts of parishes of Darraweit Guim, Kalkallo, Mickleham and Bolinda [cartographic material] / surveyed, engraved and published under the direction of Alfred R. C. Selwyn, Govt. Geologist at the Geological Survey Office, Melbourne ; geologically surveyed by Norman Taylor, Assistant Geologist, 1856 ; hills lithographed by R. Shepherd	32
Figure 8: 1972 aerial photograph of the study area	34
Figure 9: 1976 aerial photograph of the south eastern portion of the study area	35
Figure 10: Current aerial image of the northern portion of the study area	36
Figure 11: Current aerial image of the south of the study area, showing potential dry stone enclosure	
Figure 12: Dry stone features identified within the study area	43
Figure 13: Dry stone enclosure one	44
Figure 14: Dry stone enclosure two	45
Figure 15: Dry stone wall in extremely poor condition within property 7	46

EXECUTIVE SUMMARY

Archaeological and Heritage Management Solutions were commissioned by the Metropolitan Planning Authority (MPA) to undertake a Post-Contact Heritage Assessment for PSP 1059, Beveridge North West.

The aims of the assessment were to:

- Identify any post contact built heritage, historical archaeological features and/or heritage values within the subject land;
- Assess the significance of any post-contact heritage features identified;
- Identify legislative and policy requirements for future management of any heritage items identified; and
- Provide MPA with early guidance on planning, design and management options

The scope of the assessment included:

- A search of the Victorian Heritage Register, the Victorian heritage Inventory and local council's heritage overlay and relevant strategies to identify buildings, places or sites of heritage significance within the precincts;
- Review any previous heritage assessments which are relevant to the PSP area;
- Review of local histories and conduct a search of archival sources which are relevant to the identification of heritage buildings, sites and places;
- A thematic history of the study area, from the earliest period of non-indigenous settlement to the present, identifying places or events that are significant to the locality's history;
- A list of know buildings, sites and places of historic significance within the PSP area and associated historic themes;
- Identification of areas which may contain significant archaeological sites associated with non-indigenous heritage;
- Conduct an archaeological survey;
- Assess the significance of any post-contact heritage items; and
- Provide management advice

The desktop assessment revealed there are currently no post contact places recorded within the study area on any applicable heritage registers or schedules. Analysis of high resolution aerial photography and historical maps and plans was used to identify potential built or archaeological heritage within the study area for further investigation during the archaeological survey. There was one potential dry stone enclosure noted during this analysis.

An archaeological survey was carried out within the study area on 23-26 September 2013. The survey was conducted by AHMS archaeologists Adrian Burrow, Elizabeth Foley and Simon Crocker. The purpose of the survey was to identify any built heritage items or archaeological sites within the study

area and investigate areas of archaeological potential indicated during the desktop analysis of aerial photography. Post contact heritage and archaeological sites located during the survey were recorded and the following tasks undertaken:

- Heritage Inventory site card completed / updated
- Photographic record compiled regarding the site
- Plan was made of the site in relation to other features to ensure accurate relocation

The level of recording was restricted to field survey results, in order to allow initial assessment and determination of future management requirements. The archaeological survey located two dry stone enclosures and one section of dry stone wall. All of these features were in an extremely poor condition with just one course of stone remaining. There was no contextual information evident which may assist in dating these features successfully however; it is likely that they date from the mid-nineteenth to early twentieth century - corresponding with the period that pastoralism was introduced to the area. The location of potential historic period structures or features identified as part of the desktop review were inspected as part of the field survey, but other than the dry stone structures discussed above, no further features were identified.

The features identified during the survey do not have sub surface archaeological potential and have been given the following significance rating:

Site Description	Scientific Significance	HV Heritage Significance Level
Dry Stone Enclosure One	Low	Nil
Dry Stone Enclosure Two	Low	Nil
Dry Stone Wall	Low	Nil

In line with local planning policy and accepted heritage best practice AHMS have recommended that:

- The dry stone walls and enclosure located within the study area should be retained and incorporated into development design wherever feasible provided they are not a risk to the public or compromise urban structure.
- If it is not possible to retain all of the walls, consideration should be given to re-using the stone in new features of the development, such as incorporating them into new stone walls or other landscaping features.
- As the dry stone walls are not listed in the schedule of the Mitchell Shire Council associated with planning clause 52.37 no planning permit is required to demolish, remove or alter.
- Before any of the dry stone walls are disturbed or destroyed it is recommended that they are archivally recorded in accordance with Heritage Victoria archival photography guidelines and standards. Copies of the archival photographic record should be provided to Council and to Heritage Victoria for their records.
- There always remains a small possibility that further undocumented post contact heritage places may be present, particularly buried below current ground surfaces within the activity area. The risk that further as yet undocumented places are present within the activity area is considered to be very low.

- If any such undocumented places or historical archaeological deposits are encountered during works, the surrounding area within 10 metres of the deposit or feature should be fenced off and no further work should take place within this zone. A suitably qualified heritage consultant or archaeologist should be engaged to assess the deposits and consult with Heritage Victoria and Mitchell Shire Council in order to determine the best way to proceed. It should be noted that historical archaeological sites are provided with blanket protection in Victoria under the Heritage Act.

1 INTRODUCTION

1.1 Background

Archaeological and Heritage Management Solutions (AHMS) were commissioned by Metropolitan Planning Authority (MPA) to undertake a Post-Contact Heritage Assessment for PSP 1059 Beveridge North. The purpose of the assessment was to identify and assess the significance of any post-contact built heritage or historical archaeological features within the subject land and to provide MPA with guidance about any implications for planning, design and future management options. The report's conclusions are based upon an extensive desktop assessment and a survey of the study area.

1.2 Project Location

Beveridge North West PSP 1059 is located within Mitchell Shire Council, to the west of the Hume Freeway, north of Camerons Lane, west of Old Sydney Road and south of Wallan (Figure 1).

The Beveridge North West PSP comprises an area of 1,259 hectares (gross). The PSP is expected to generate 11,000 residential lots. The Properties involved in the study are outlined in the table below.

Table 1: Properties within the Study Area

Property	GAA Property Number	Landowner
180 Camerons Lane Beveridge	110757 & 110760	Yarra Valley Water
360 Camerons Lane Beveridge	110758	Vince and Stella Martino
1000 Old Sydney Rd Beveridge	111232	Fabio & Christian Partners Pty Ltd
1010 Old Sydney Rd Beveridge	111233	Whiskey Hill Pty Ltd
10 Camerons Lane Beveridge	110759	John & Catherine Storer
40 Camerons Lane Beveridge	110756	Peter Mooney & Bernard Mooney
615 Hume Highway Beveridge	112242	Dulcie Mooney
55 Northern Highway Beveridge	110842	William and Mary Gilbo
175 Northern Highway Wallan	110841	Crystal Creek Properties Pty Ltd



Figure 1: Location of the Study Area

1.3 Aims and Scope of Work

1.3.1 Aims

The aims of the assessment were to:

- Identify any post contact built heritage, historical archaeological features and/or heritage values within the subject land;
- Assess the significance of any post-contact heritage features identified;
- Identify legislative and policy requirements for future management of any heritage items identified; and
- Provide MPA with early guidance on planning, design and management options;

1.3.2 Scope of Work

The scope of the assessment included:

- A search of the Victorian Heritage Register, the Victorian heritage Inventory and local council's heritage overlay and relevant strategies to identify buildings, places or sites of heritage significance within the precincts;
- Review any previous heritage assessments which are relevant to the PSP area;
- Review of local histories and conduct a search of archival sources which are relevant to the identification of heritage buildings, sites and places;
- A thematic history of the study area, from the earliest period of non-indigenous settlement to the present, identifying places or events that are significant to the locality's history;
- A list of know buildings, sites and places of historic significance within the PSP are and associated historic themes;
- Identification of areas which may contain significant archaeological sites associated with non-indigenous heritage;
- Conduct an archaeological survey;
- Assess the significance of any post-contact heritage items; and
- Provide management advice.

1.4 Methodology

This study made use of a variety of historic sources and maps to identify key developments and changes to the subject land in the period following European settlement of the district. Historic maps and aerial photographs of the site were overlain on current survey maps to identify the nature and extent of structures, plantings and landscape modification. Analysis of the documentary history of the site was followed by a field inspection targeting areas identified during the data gathering phase as well as attempting to identify features that did not appear in the documentary record.

1.4.1 Primary and Secondary Sources Reviewed

The sources consulted during this assessment include the HERMES database as well as the catalogue of archaeological reports available through Heritage Victoria. Other sources consulted included the Register of the National Trust and the Australian Heritage Database. These databases were consulted in order to better understand the known sites in the study area as well as the archaeological investigations that have occurred across the study area in the past. The municipal heritage studies already prepared for the Mitchell Shire Council were used to provide a thematic history of the study area. Historic aerial photographs were obtained from Land Victoria and historic maps were obtained through the Public Records Office of Victoria and the State Library of Victoria.

1.4.2 Stakeholder Consultation

MPA was consulted throughout the assessment and provided GIS, contour and vegetation data relevant to the study area. This project was also undertaken in consultation with Heritage Victoria. A notice of intention to conduct an archaeological survey was submitted to Heritage Victoria on 11th September 2013. Heritage Victoria assigned the number 4372 to the project via email on 11th September 2013.

1.4.3 Field Survey Methodology

Initial desktop research was used to inform the methodology used in the archaeological survey. Historical and current aerial imagery was analysed in order to identify potential post-contact features throughout the study area and provide areas to focus upon during the archaeological survey.

The survey was conducted using a 4x4 vehicle to move between the areas of interest highlighted in the desktop assessment which were then surveyed on foot.

The post-contact sites identified were mapped using a differential GPS and were also photographed, drawn and described in line with proper archaeological practice.

1.4.4 Significance Evaluation

Cultural significance is the expression of the cultural value afforded a place, site or item (such as an archaeological deposit). The process of finding out whether a place as a whole, or its features or components such as buildings, landscape or potential archaeological remains are important or not, is called assessing significance.

Heritage Victoria has developed a Framework of Historical Themes to increase people's understanding and appreciation of Victoria's rich heritage. The Framework's purpose is to highlight what is distinctive about Victoria and to increase awareness and appreciation of the state's heritage. Historical themes are used in the Victorian Heritage management system to assist significance assessments of heritage places and objects.

The Historical Themes relevant to the study are discussed in Section 4.1. In 2008 the Victorian Heritage Council adopted a set of criteria for assessing cultural heritage significance. These criteria are designed to assist in determining whether a heritage place holds, Universal, National, State, Local or no significance and determining those places or objects which warrant inclusion on the Victorian Heritage Register. These criteria are also considered in assessing the significance of the post-contact sites within the study area.

The Burra Charter was also considered as part of the significance evaluation for post-contact sites in the study area, particularly in relation to assessing the scientific significance of the post-contact sites in consideration of their inclusion into the Mitchell Shire Heritage overlay. The Burra charter assesses significance based on aesthetic, historic, scientific or social value for past, present and future generations.

1.5 Report Format

This post-contact heritage assessment was undertaken in accordance with the Heritage Council of Victoria guidelines¹. The report is divided into the following sections:

- Section 2 – summarises the heritage legislation relevant to the study area;
- Section 3 – presents the environmental background of the study area including geomorphology, vegetation and climate as well as a land use history;
- Section 4 – historical background of the study area and broader area, including the Mitchell Shire thematic history;
- Section 5 – archaeological background including previous assessments, predictive model and analysis of historic aerials;
- Section 6 – archaeological survey including field results, interpretation and discussion, and significance; and
- Section 7 – recommendations.

1.6 Authorship

Simon Crocker (BA Hons), Adrian Burrow (BA Hons) and Elizabeth Foley (BA Hons) undertook the archaeological survey. This report was compiled by Emma Rae and Simon Crocker and was reviewed by Jim Wheeler (AHMS Victoria Team Manager).

1.7 Report Submission

The draft report was submitted to Metropolitan Planning Authority for review in October 2013 and comments incorporated in the version of the report released for consultation. Feedback from consultation was received by AHMS on 10 February 2014 and comments incorporated. The final report will be submitted to Heritage Victoria in line with requirements under the Heritage Act 1995 as well as Mitchell Shire Council.

¹ Guidelines for Conducting Historical Archaeological Surveys. Heritage Council of Victoria (Heritage Victoria) July 2008.

2 HERITAGE LEGISLATION

2.1 The Heritage Act 1995 (Victoria)

The Heritage Act 1995 provides the primary legislative framework for heritage protection in Victoria, replacing both the Historic Buildings Act 1981 and the Historic Shipwrecks Act 1981. The single, comprehensive Heritage Act 1995 also deals with non-Aboriginal archaeological sites, previously covered under the Archaeological and Aboriginal Relics Preservation Act 1971. The Heritage Act 1995 establishes the Heritage Council Victoria as the State's main decision-making body on heritage issues. Heritage Council Victoria receives all its administrative support from Heritage Victoria (HV). The Executive Director, acts on the technical advice of Heritage Victoria and is responsible for the administration of the Act. The Executive Director can recommend registration of a heritage place or object by Heritage Council Victoria and can issue permits for a registered place or object to be altered, removed or demolished, despoiled or damaged, developed or excavated. The Heritage Act 1995 provides protection for a wide range of cultural heritage places and objects, including:

- historic archaeological sites and artefacts;
- historic buildings, structures and precincts;
- gardens, trees and cemeteries;
- cultural landscapes; and
- shipwrecks.

All non-Aboriginal archaeological sites in Victoria older than 50 years are protected under the Heritage Act 1995, whether or not they are recorded by Heritage Victoria. For example, if a site is uncovered in the course of a building project, it is an offence to knowingly disturb, damage or excavate it without obtaining the appropriate permission from the Executive Director, Heritage Victoria. Section 131 of the Heritage Act 1995 requires that a 'Notice of Intention to carry out an Archaeological Survey' form be lodged with HV prior to conducting an archaeological field survey.

2.2 Victorian Heritage Register

The Heritage Register is established under Section 18 of the Heritage Act (1995) and is for state significant heritage. Heritage places and objects that have been assessed as being of significance to the State of Victoria are included in the Victorian Heritage Register. The Victorian Heritage Register exists to protect, preserve and conserve as much of the fabric of the place and the objects/artefacts as possible. Pursuant to Section 67 of the Heritage Act 1995, a Permit is required to carry out works or activities to a place or object on the Victorian Heritage Register.

2.3 Victorian Heritage Inventory

All known historical archaeological sites in Victoria older than 50 years are listed in the Heritage Inventory. Heritage Inventory listing enables Heritage Victoria to record and monitor sites that are not considered to be of State significance or where the significance is unknown. Recording, excavating and monitoring are the usual methods of assessing and managing the heritage values of a site listed in the Heritage Inventory. Pursuant to Section 129 of the Heritage Act 1995, a Consent is required to carry out works or activities to a place or object on the Victorian Heritage Inventory.

2.4 The Planning Environment Act 1987 & Planning Schemes Act 1996 (Victoria).

Under the Planning and Environment Act 1987, municipal and shire councils can protect post-contact heritage places that are considered important to local communities, by including these sites in their local planning scheme. Councils are empowered to commission reports and to 'conserve and enhance those buildings, areas or other places which are of scientific, aesthetic, architectural or historical interest, or otherwise of special cultural values 4(1)(d). The Planning and Environment (Planning Schemes) Act 1996 amended the Planning and Environment Act 1987. The new Act provided for the Minister for Planning to prepare a set of standard provisions for planning schemes called the Victoria Planning Provisions (VPP).

The VPP is a comprehensive set of standard planning provisions and provides a standard format for all Victorian planning schemes. The planning authority (usually the municipal council) must provide the local planning policy content and select the appropriate zones and overlays from the VPP for inclusion in their planning scheme.

2.5 City of Mitchell - Local Planning Policy

The Mitchell Shire Council has prepared Amendment C56 to the Mitchell Planning Scheme which aims to implement the following Council adopted documents:

- Mitchell Shire Heritage Amendment, Review of Heritage Precincts, Context Pty Ltd, 13 December 2012
- Mitchell Shire Stage 2, Heritage Study Review, Context Pty Ltd (12 March 2013)
- Mitchell Shire Heritage Study - Amendment C56 Heritage Citations, March 2013
- Mitchell Shire Stage Two Heritage Study (Vol 1-5), Lorraine Huddle Pty Ltd, January 2006

A Planning Panel hearing is due in the week commencing 11 November 2013 in relation to these amendments. There do not appear to be any direct implications for the study area in relation to the amendment as there are no Heritage overlays which affect the study area.

The current Mitchell Shire Planning Scheme and its relationship to heritage values is outlined below.

The Mitchell Shire has adopted a range of local planning policies in relation to heritage values within the municipality. These policies are outlined below:

State Planning Policy Framework - Clause 15.03-1 Heritage Conservation

The objective of this clause is to ensure the conservation of places of heritage significance. This involves Council undertaking the following:

Identify, assess and document places of natural and cultural heritage significance as a basis for their inclusion in the planning scheme.

Provide for the protection of natural heritage sites and man-made resources and the maintenance of ecological processes and biological diversity.

Provide for the conservation and enhancement of those places which are of, aesthetic, archaeological, architectural, cultural, scientific, or social significance, or otherwise of special cultural value.

Encourage appropriate development that respects places with identified heritage values and creates a worthy legacy for future generations.

Retain those elements that contribute to the importance of the heritage place.

Encourage the conservation and restoration of contributory elements.

Ensure an appropriate setting and context for heritage places is maintained or enhanced.

Support adaptive reuse of heritage buildings whose use has become redundant.

Local Planning Policy Framework

Clause 43.01 Heritage Overlay

As outlined above the Mitchell Shire intends to put forward an amendment to the Planning Policy Framework which will affect the Heritage Overlay. This amendment is scheduled for further consideration towards the end of 2013.

The purpose of this clause is:

To implement the State Planning Policy Framework and the Local Planning Policy Framework, including the Municipal Strategic and local planning policies.

To conserve and enhance heritage places of natural or cultural significance.

To conserve and enhance those elements which contribute to the significance of heritage places

To ensure that development does not adversely affect the significance of heritage places

To conserve specifically identified heritage places by allowing a use that would otherwise be prohibited if this will demonstrably assist with the conservation of the significance of the heritage place.

Clause 43.01-1 - 43.01-5 outlines a series of scenarios where an action either requires or is exempt from requiring a permit in relation to a heritage overlay.

Clause 52.37 Dry Stone Walls

A permit is required to demolish or remove or alter a dry stone wall constructed before 1940 on land specified in the schedule to this provision. This does not apply to:

- *Dry Stone Structures other than walls and fences.*
- *The demolition or removal of a section of a dry stone wall to install a gate*
- *The reconstruction of damaged or collapsing walls which are undertaken to the same specification and using the same materials as the existing walls.*

Decisions Guidelines:

Before deciding on an application, in addition to the decision guidelines in clause 65, the responsible authority must consider, as appropriate:

- *The significance of the dry stone wall*
- *Any applicable heritage study, statement of significance and conservation policy*
- *Whether the proposal will adversely affect the significance of the dry stone wall*

- *Whether the proposal will adversely affect the significance, character or appearance of the area.*

In this instance Clause 52.37 does not apply, the dry stone walls and features identified within the study area are identified in the schedule associated with Clause 52.37.

2.6 Current Status

The Mitchell Shire Council has a Heritage Overlay and maintains a schedule of heritage items located within its administrative jurisdiction. These may include items such as trees, shipwrecks, buildings and landscapes.

A search was made of all the relevant heritage databases for previously registered cultural heritage sites within the current study area, both Aboriginal and European. These databases included:

- Victorian Aboriginal Heritage Register;
- Victorian Heritage Register;
- Victorian Heritage Inventory;
- Australian Heritage Places Inventory;
- National Trust of Australia (Victoria) Register; and
- Mitchell Shire Council Heritage Overlay.

There are no entries on any of the above Registers in relation to the study area.

3 ENVIRONMENTAL BACKGROUND

Archaeological assessment reports include information about the environmental context of study areas because of the important role environmental characteristics played in influencing the types of archaeological sites in any given area. Physical environments influence both the type and availability of natural resources and the types of cultural activities that were carried out in the past. Correspondingly, this also influences the types of archaeological sites that may be found.

A determination of the former environmental context is essential to develop accurate models of cultural activity, site distribution patterns and the archaeological potential of any given area. The environmental setting of the study area is discussed below.

3.1 Landscape Characteristics

The study area is characterised by low slope gradients and a broad flat, gently undulating volcanic plain formed from sheetflow basalt parent material associated with the Newer Volcanics.

Contour mapping shows there are two distinct areas of elevation in the northern portion of the study area.

Published data shown on the DSE interactive map indicates the dominant geology of the study area is comprised entirely of unnamed sheetflow basalt (Qno1) (**Error! Not a valid bookmark self-reference.**)

The Qno1 Newer Volcanic plains that dominate the west of Melbourne are usually associated with thin clay loam soil profiles overlaying heavy clay B horizon subsoils formed from decomposing basalt parent material. The landscape is also typically littered with basalt boulders and cobbles.

The study area also features areas of Kilmore Siltstone (Sxk), in the western portion, associated with the minor drainage corridors in that part of the activity area. This is a thin bedded siltstone with thin sandstone beds. There are also unnamed incised colluvium deposits (Nc1) associated with the Kalkallo Creek in the western portion of the study area.

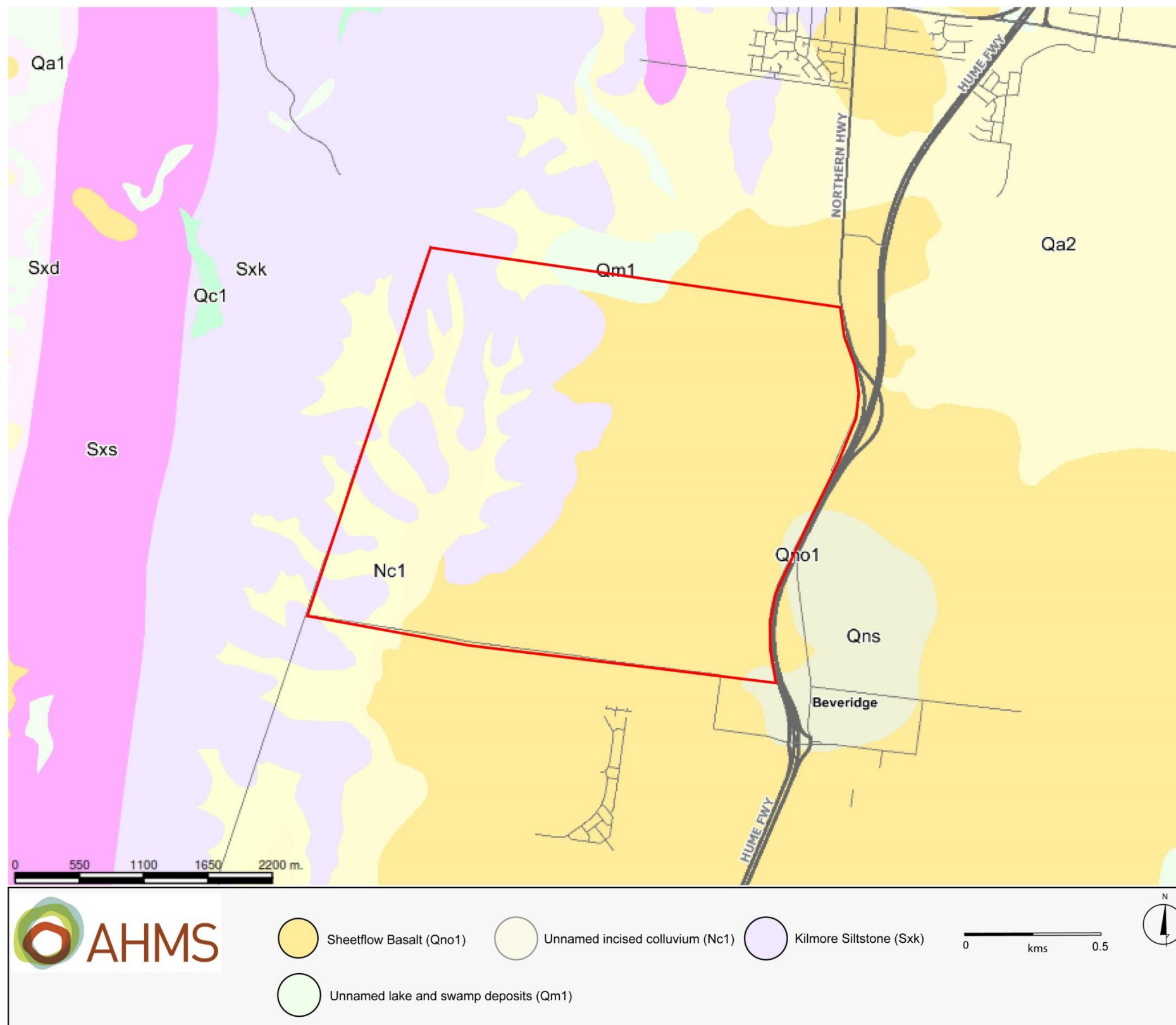


Figure 2: Geology in the study area

3.2 Vegetation

Published information on vegetation and biodiversity is included on the Victorian Resources Online website (VRO). It provides a good indication of the prevailing vegetation patterns prior to European settlement and clearance of the land. For the purposes of showing the general patterns of vegetation across the study area, VRO 1750 Vegetation Communities (EVC) are shown on Figure 3.

The predicted 1750 EVCs within the study area are Plains Grassland, Plains Grassy Woodland, Grassy Woodland and Valley Grassy Forest.

Analysis of current aerial photographs of the study area confirms that, with the exception of dispersed trees, isolated pockets of vegetation, such as native grasses, and a red gum stand in the north-east corner, the majority of the original vegetation has been largely cleared.

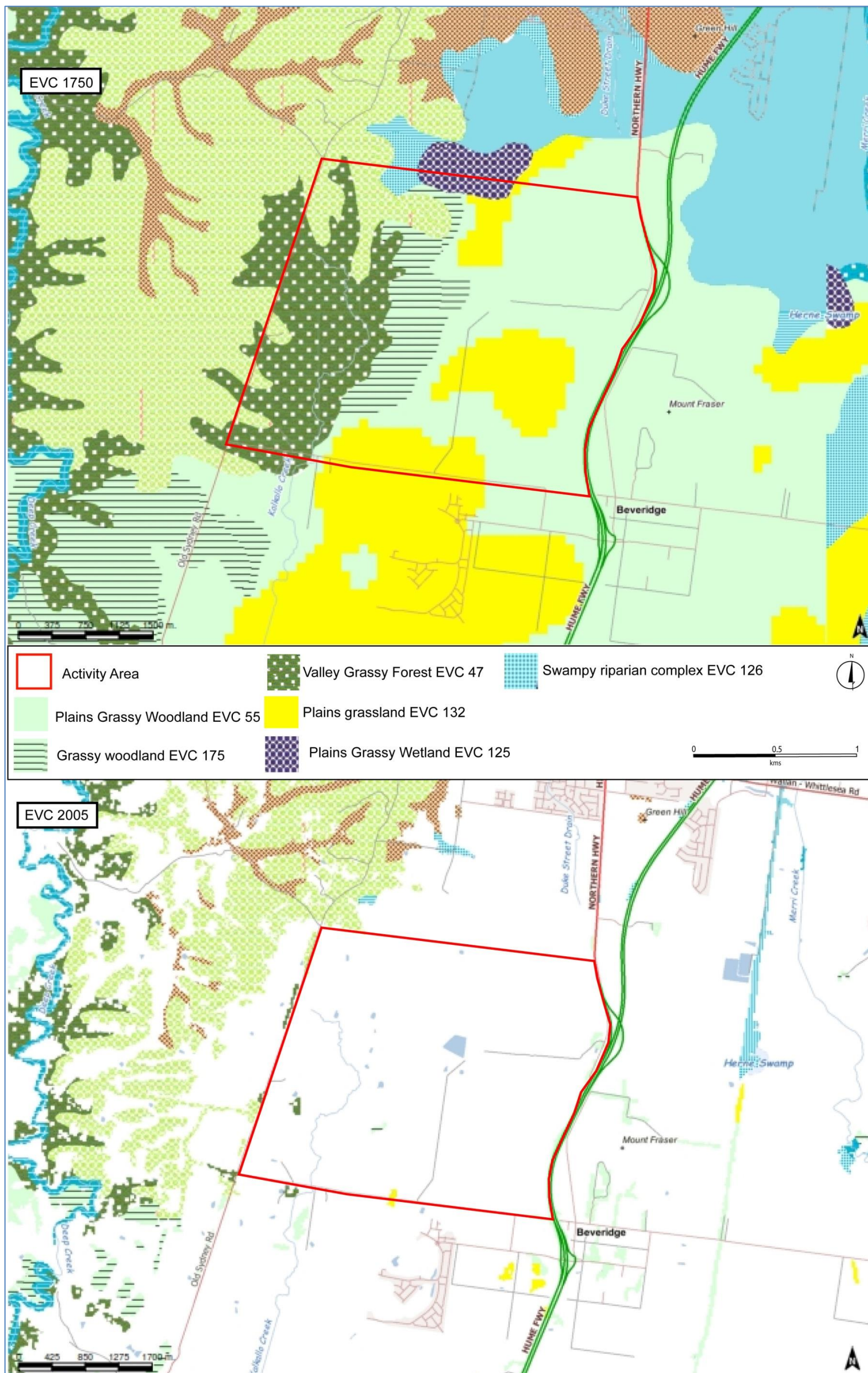


Figure 3: Predicted vegetation in the Study area in 1750 and 2005

4 HISTORICAL BACKGROUND

4.1 Preamble

The study area straddles the Parishes of Darraweit Guim and Merriang within the County of Bourke (Figure 4 & Figure 5) Crown Portions 14, 15, 18 and 19 make up the portion of the study area in the Darraweit Guim Parish whilst Crown Portions 23, 24, 25 and 26 make up the portion of the study area within the Merriang Parish.

A thematic history has already been compiled for the Mitchell Shire as part of a broad heritage study undertaken by Lorraine Huddle Pty Ltd in 2006 entitled Mitchell Shire Stage Two Heritage Study. This thematic history provides a historical background for the area and assists in providing context to the current study area. Our thematic history presented below draws heavily on the thematic history presented in the Mitchell Shire Stage Two Heritage Study 2006.

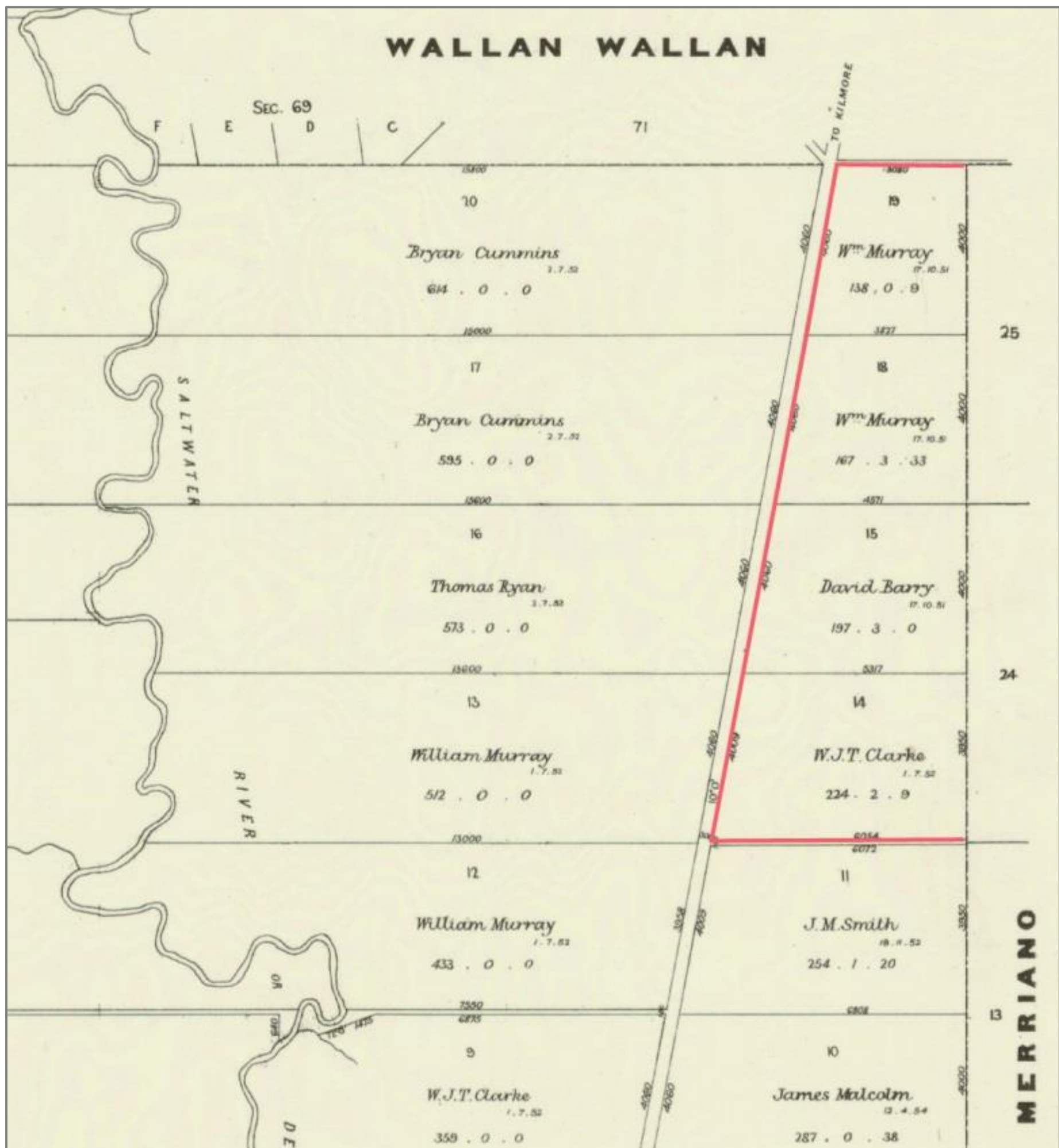


Figure 4: The portion of the study area within the Darraweit Guim Parish is outlined in red Source: Victorian Department of Crown Lands and Survey, 1956, Darraweit Guim, County of Bourke

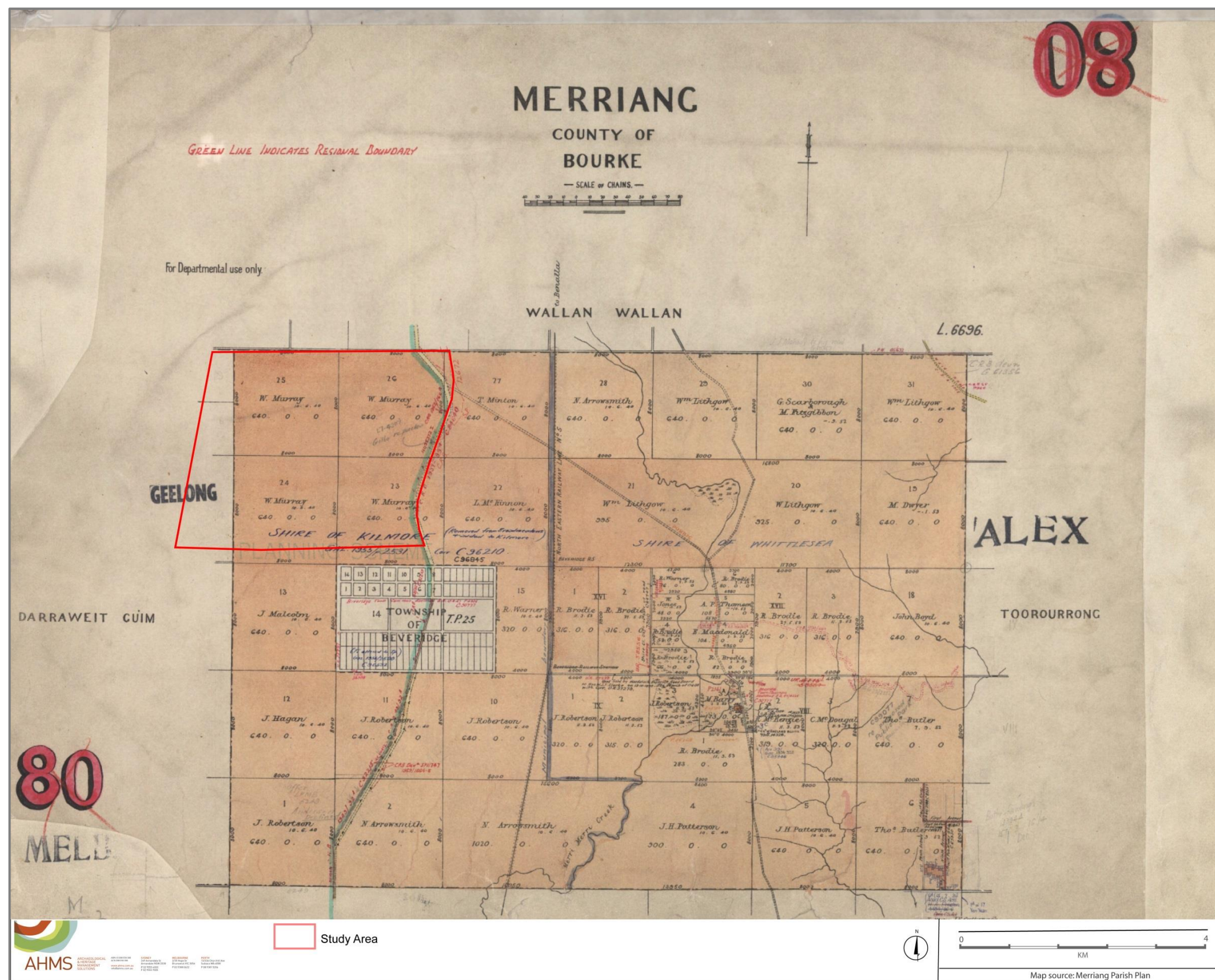


Figure 5: The portion of the study area within the Merriang Parish Source: Victorian Department of Crown Lands and Survey, 1956, Merriang, County of Bourke

4.2 Thematic History

The Mitchell Shire commissioned Lorraine Huddle Pty Ltd prepare the Mitchell Shire Stage Two Heritage Study in 2006 which included a thematic history as part of Volume Two. This thematic history provides important context for the assessment of the heritage significance of post-contact heritage in the study area. As part of this study, the following relevant Victorian Historical themes were identified²:

- Tracing climate and topographical change
- Indigenous occupation and way of life
- Exploring, Surveying and Mapping
- Adapting to diverse environments
- Arriving in a new land
- Living off the land
- Promoting Settlement
- Making homes for Victorians
- Migrating and making a home
- Shaping the suburbs
- Promoting settlement
- Making homes for Victorian's
- Migrating and making a home
- Shaping the suburbs
- Developing institutions of self-government
- Educating people
- Living off the land
- Grazing and raising livestock
- Farming
- Transforming the land and waterways
- Exploiting other mineral, forest and water resources

² Context 2011, City of Whittlesea Heritage Study, Volume 1: Thematic Environmental History pp7-60

- Processing raw materials
- Establishing pathways
- Linking Victorians by rail
- Establishing and maintaining communications

4.2.1 First Contact and European Settlement

The following historical themes are relevant to a discussion of first contact and European settlement:

- Tracing climate and topographical change
- Indigenous occupation and way of life
- Exploring, Surveying and Mapping

Tracing climate and topographical change.

The Plenty River basin is the dominant geographical feature in the area and there are three discrete regions within the basin. The first is the Kinglake plateau, the second the Nillumbik surface and the third the newer basalt lava plain³.

The oldest of these regions is the Kinglake Plateau which was created during the Mesozoic era⁴. The Nillumbik surface is erosional and forms the basin areas to the north and east of Melbourne. The Plenty River, Yarra River and the Darebin and Merri Creeks are contained within the Nillumbik basin. The actions of these rivers have removed the majority of the sand deposits which were left during the tertiary era⁵. The newer basalt lava plain was formed approximately 1 million years ago and is considered to be the world's third largest basalt plain⁶.

Indigenous occupation and way of life.

The vegetation patterns and the ample water resources in and surrounding the study area would have made it an attractive location for Aboriginal groups. Areas which were forested would have provided an ample supply of animals to hunt and natural resources which would have been used for tool production. The added advantage of the Kalkallo Creek and nearby Merri and Deep Creeks as a fresh water resource would have diversified resources further.

The introduction of European migrants to the Mitchell Shire area contributed to the dispossession of the indigenous population from the land. J.C Hamilton has described his first encounter with the Aboriginal groups of the area:

My first recollection of the natives of this country was in the Kilmore district, where in 1845 I witnessed their great national event - the Coayang...150 to 200 of the Goulburn Valley, Kilmore and other tribes present; their place of meeting was in the ranges to the east of Kilmore⁷

The Mitchell Shire Heritage Study describes interactions between Europeans and the local indigenous populations in the early days of settlement in the region. These descriptions offer some insight into

³ Ibid p7

⁴ Ibid 7

⁵ Ibid

⁶ Ibid

⁷ Ibid

indigenous ways of life prior to the arrival of Europeans and demonstrate that the local Aboriginal groups endeavoured to continue these traditions post contact:

Indigenous people near Kilmore (the Wurunjerri). 'on the west side of Tantaraboo' were also notable for their occupation and use of the quarry there. In 1848, an explosion at Mr Allen's Mill on Sydney St was credited with 'frightening' the remaining Indigenous peoples from where they were encamped at the back of it, in O'Dea's Paddock.

At Seymour the Aboriginal people there used to camp on the river behind the Royal Hotel (then the Royal George) and a Corroboree ground at King's Park. A number of poignant photographs exist of Seymour's Aboriginal people at that time, including Indigenous peoples sitting on the steps of the Church of England, where they reputedly used to hold corroborees before the land was reserved for the Church⁸.

Exploration and First Contact

The first significant exploration into the Mitchell Shire area by Europeans was by Hume and Hovell in 1824. Hume and Hovell were commissioned by Governor Bourke of NSW to explore the inland of Australia in search of agricultural land and Rivers which could be used for transporting goods. The areas surrounding Mitchell Shire and Whittlesea Shire were described by Hovell and Hume on 14 December 1824⁹.

Having passed through the first plain...myself and Mr Hume ascended a high but single hill. In front from which we saw a very gratifying sight. This was a very extensive plain extending from west to south east for several miles with patches of forest which appear to separate one plain from another. But the whole appeared in front, say south, to be level but in parts in the plains some hills arose of a conical shape, with only here and there a few trees upon them. And all the soil of best quality¹⁰.

Hume and Hovell's descriptions of the area inspired attempts at settlement from several parties including John Batman in 1835 who after exploring the land signed a treaty with JAGAJAGA (Douta Galla Treaty) and other Aboriginal elders on 6 June 1835. The treaty was not recognised by colonial authorities; however, Batman's description of the area inspired new arrivals to the area. Hovell and Hume's description of the land affirmed its desirability and, effectively, ensured that it would be settled. Context adds that in 1835, after hearing about the area John Batman decided to investigate¹¹.

Major Mitchell was the next overland explorer to venture into the Port Phillip region. Major Mitchell arrived in 1836 with a large party of carts and carriages and was in search of pastoral land. The Mitchell Shire Heritage Study outlines Mitchell's path and influence:

So great was his convoy of carts and whalebone carriages...that he left a deep track of ruts that became known as the Major's Line...It is passed in a line just north of Seymour, crossing the Goulbourn at Mitchellstown...Major Mitchell's trail became the standard route for the early settlers that followed, and was marked with a burst of commemorative activity in 1936, the influence of which may be seen in the selection of his name for the amalgamated shires that make up the present day Mitchell Shire¹²

⁸ Huddle 2006 Volume 2 of 5: Environmental History, Mitchell Shire Stage Two Heritage Study. P.43

⁹ Context 2011, City of Whittlesea Heritage Study, Volume 1: Thematic Environmental History p8

¹⁰ Journal of Proceedings of Royal Historical Society, vol 7, 360. Quoted in Payne, J.W. Payne, The Plenty: A Centenary History of the Whittlesea Shire (Lowden Publishing: Kilmore, 1975), 1.

¹¹ Context 2011, City of Whittlesea Heritage Study, Volume 1: Thematic Environmental p 10

¹² Huddle 2006 Volume 2 of 5: Environmental History, Mitchell Shire Stage Two Heritage Study. P.33

4.2.2 Settling the Land and Migration

The following historical themes are relevant to this section

- Adapting to diverse environments
- Arriving in a new land
- Living off the land
- Promoting Settlement
- Making homes for Victorians
- Migrating and making a home
- Shaping the suburbs

Early squatters and land owners

The pastoral era in Victoria began in the mid-1830s when livestock was introduced either from Tasmania or the Riverina District, following Major Mitchell's exploration of new pastures south of the Murray River in 1836¹³. This was in effect until the 1860's when, a series of Land Acts opened up Victoria for selection and most of the large pastoral runs were broken up into smaller farms¹⁴. Many of the initial pastoralists in Victoria were running sheep over large areas of land illegally and were quickly branded as squatters, however, by 1836 the Government began to formalise their use of the land through the issue of licenses¹⁵.

The proximity of the Mitchell Shire to Melbourne and the resulting pressure for development meant that the squatter's grasp was weaker here than in more distant rural districts and, the age of the squatter lasted only a few short years. By 1841, the Mitchell Shire was included in what was termed the "settled districts" of Melbourne and was quickly settled by small scale agriculturalists. Subsequent selection Acts further eroded what remaining tenure the squatters possessed as smaller farms were developed and the land was aggressively cleared for more intensive land use¹⁶.

Migration.

While the early squatters were the first Europeans to transform the region migration to the area continued to increase throughout the late 19th and early 20th century. Huddle outlines the main waves of migration to the Mitchell Shire in the 2006 Heritage Study:

In the wake of the explorers and overlanders many single men came as shepherds and drovers, building rudimentary huts and living for long periods in isolation, described by one contemporary as 'semi-barbarous regions, far from civilisations' in 'miserable huts of bark' contending not only with an unfamiliar climate but with what were widely termed 'savage tribes of Indigenous peoples'. Such men were not necessarily free migrants, as many among them may have been born in the colony or be themselves ex-convicts who had either served their term or who had 'tickets of leave' to work and live in the colony. According to the 1852 census, in Kilmore there were 1921 inhabitants 'born or arrived free' and 2 ticket of leave holders, while 131 were 'other free persons' who were neither colonial born nor 'free arrivals', which would suggest they were ex-convicts, 13 of them women.

¹³ Ibid 10

¹⁴ Ibid 10

¹⁵ Ibid 10

¹⁶ Ibid p10

Conditions in England and Ireland in the early 19th century were desperate enough that many people decided to travel to the colonies¹⁷. Once migrants had established themselves, other family members or friends would also choose to migrate, a process referred to as 'Chain Migration' which often led to towns (for example Kilmore) becoming heavily populated with the Irish etc¹⁸.

The Scottish Highland Clearances of the 1840s and 1850s also had a heavy impact upon population patterns of the region. Huddle outlines that:

By 1841 over 20,000 free settlers had made their way to Australia, and particular attention began to be paid towards encouraging women and whole families to migrate. Following the discovery of gold in Victoria in the 1850s, push factors in the Old World paled before the glitter of gold, and it was after 1851 that the area was to have its greatest influx yet of free immigrants and prospectors¹⁹.

A further intense wave of migration began after World War II and many of these migrants were destined for Victoria. Between 1945 and 1963 almost 1,000,000 migrants arrived in Victoria²⁰. The 1958 Migration Act removed references to race which opened the door to a non -discriminatory migration policy and although the majority of immigrants were British, other European nations such as Italy, Germany and Malta were also represented²¹.

Suburban development in the 20th century.

Population growth was steady in the Mitchell Shire in the 20th century; however, more recently differences in growth have become apparent between the southern and northern parts of the Shire. Suburbs in the southern part of the Shire such as Beveridge and Wallan have seen expansion and increased populations because of their commutable distance from Melbourne, however, areas such as Seymour lie outside the economic catchment of Melbourne and commuters from these areas are far less common²².

Mitchell Shire remains an area of suburban growth, particularly in its southern portion and forms part of the wider Melbourne growth area.

4.2.3 Governing and Administration

The following historic themes are relevant to this section:

- Developing institutions of self-government
- Educating people

Development of local government.

The Mitchell Shire Council was established on 18 November 1994. Previously, Victoria had 210 local councils across the state however a review in the early 1990's led to this number being reduced to 78 local Councils²³.

The Mitchell Shire as it is today is made up of an amalgamation of former city's and shires²⁴:

- The formal rural city of Seymour

¹⁷ Huddle 2006, Volume Two of Five: Environmental History Mitchell Shire Stage Two Heritage Study p 38

¹⁸ Context 2013 PSP 67 - Donnybrook, Post-Contact Heritage Assessment 2013 p 39

¹⁹ Ibid 40

²⁰ Ibid 39

²¹ www.museumvictoria.com.au/origins/keydates.aspx?cid=13 accessed 26th September 2013

²² <http://forecast2.id.com.au/Default.aspx?id=250&pg=5000> accessed 26th September 2013

²³ http://www.mitchellshire.vic.gov.au/your_council/history.aspx accessed 27th September 2013

²⁴ Context 2013 PSP 67 - Donnybrook, Post-Contact Heritage Assessment 2013 p 39

- The former Pyalong Shire
- The former Broadford Shire
- The former Mclvor Shire
- The former Kilmore Shire

4.2.4 Utilising natural resources

The following historic themes are relevant to this section

- Living off the land
- Grazing and raising livestock
- Farming
- Transforming the land and waterways
- Exploiting other mineral, forest and water resources
- Processing raw materials

The Mitchell Shire provided ample opportunity for early settlers to utilise the natural resources of the area to establish themselves. Grazing, agriculture and dairying were dominant in the Mitchell Shire, however, quarrying of the extensive bluestone and basalt sources was also relatively common. Timber milling was also prevalent in the Wandong and Plenty Ranges.

The following summary of farming in the region comes from the 2006 Stage Two Mitchell Shire Heritage Study:

While sheep and cattle runs were the primary focus of early European incursions into the area, farming followed immediately, albeit on a small scale, in order to supply the overlanders and squatters with foodstuffs. Besides the farms on Rutledge's Special Survey in 1841, the Parish of Merriang was sold in 1840 for farming purposes. Some of the earliest farms were also those around Seymour and Tallarook Flats. There, small farms were auctioned in lots in the 1850's under the selection acts. Acres under tillage suffered a large decrease in the years immediately following the first gold rush in 1851, which upset settled patterns of life across the colony and precipitated a labour supply crisis as able bodied men left in droves to seek their fortune on the goldfields...Ultimately, soil types in the area often proved unsuited to intense forms of European agriculture, with land degradation a continuing challenge to agriculture. The rapid exhaustion of the land also explained the large size required for leases and the continued predominance of grazing over cropping.

4.2.5 Connecting Communities

The following historical themes are relevant to a discussion of connecting communities

- Establishing pathways
- Linking Victorians by rail
- Establishing and maintaining communications

The Sydney Road was the most central thoroughfare through the region and provided connection with Melbourne; however, the road was generally in a very bad condition²⁵. Coaches passed daily through the larger towns such as Broadford carrying both passengers and mail which lead to the construction of not only hotels but also post offices throughout the present day Mitchell Shire²⁶. Given the heavy reliance on the postal system, the location of the post office within a town became very significant²⁷.

The Mitchell Shire contains section of the main North Eastern Railway line between Melbourne and Sydney which was commissioned in 1870. O'Grady Leggatt and Noonan were commissioned to construct the Essendon to Seymour section of the railway, at a cost of £305, 555²⁸. By June 1871 the line reached Craigieburn and in October 1872 the line had reached Donnybrook. In 1883 the line reached Albury and a duplicated line was constructed between Donnybrook and Beveridge²⁹.

4.3 Site Specific Use and Occupation

As outlined above, the early history of Beveridge and the broader Mitchell Shire is dominated by pastoralism. The results of our site specific desktop assessment work outlined below indicates the study area has been used primarily for grazing and farming in the historic period.

The earliest documented landowners for properties within PSP 1059 were William Murray, David Barry and W.J.T Clarke³⁰. The land within the PSP has since been subdivided a number of times to eventually form the properties that exist today. In spite of the progressive subdivision of the land, land uses within the PSP study area have remained consistent over time. The largest current property owner within the PSP is Yarra Valley Water who use and maintain the land as an area for flood overflow.

A review of historical maps and plans was carried out to identify past use and occupation of the study area and to identify any specific built items indicated or shown on historical maps and plans.

A geological plan dating to 1856 (Figure 6 and Figure 7) does not show any buildings within the study area, however, it does indicate that there was a quarry in the northern portion of the study area within an area described as 'Volcanic Hills'. Contour mapping shows that these rises are still present and the Metropolitan Planning Authority have informed³¹ AHMS that the resources in these areas are considered to be a state significant resource. It is therefore unsurprising that this area has been quarried from as early as 1856. The only other possible historic feature identifiable on this map within close proximity to the study area is the Inverlochy Castle Hotel which is located to the north of the study area on the main road running towards Wallan.

The Parish and township working plans held by the Public Records Office Victoria (PROV), were also consulted during the desktop assessment for this project. These plans are working plans and can contain information from as early as the first waves of European settlement up until the time they were digitised by PROV. There were no distinctive features marked on these plans for the study area, other than the cadastral boundaries. This plan has been reproduced earlier in the report and shown on Figure 4 and Figure 5.

²⁵ Huddle 2006, Volume Two of Five: Environmental History Mitchell Shire Stage Two Heritage Study p 52

²⁶ Context 2013 PSP 67 - Donnybrook, Post-Contact Heritage Assessment 2013 p 39

²⁷ Ibid

²⁸ Ibid

²⁹ Ibid 19

³⁰ Victorian Department of Crown Lands and Survey, 1956, Darraweit Guim, County of Bourke and Merriang County of Bourke

³¹ Pers Comm, Fiona McDougall 10th September 2013.

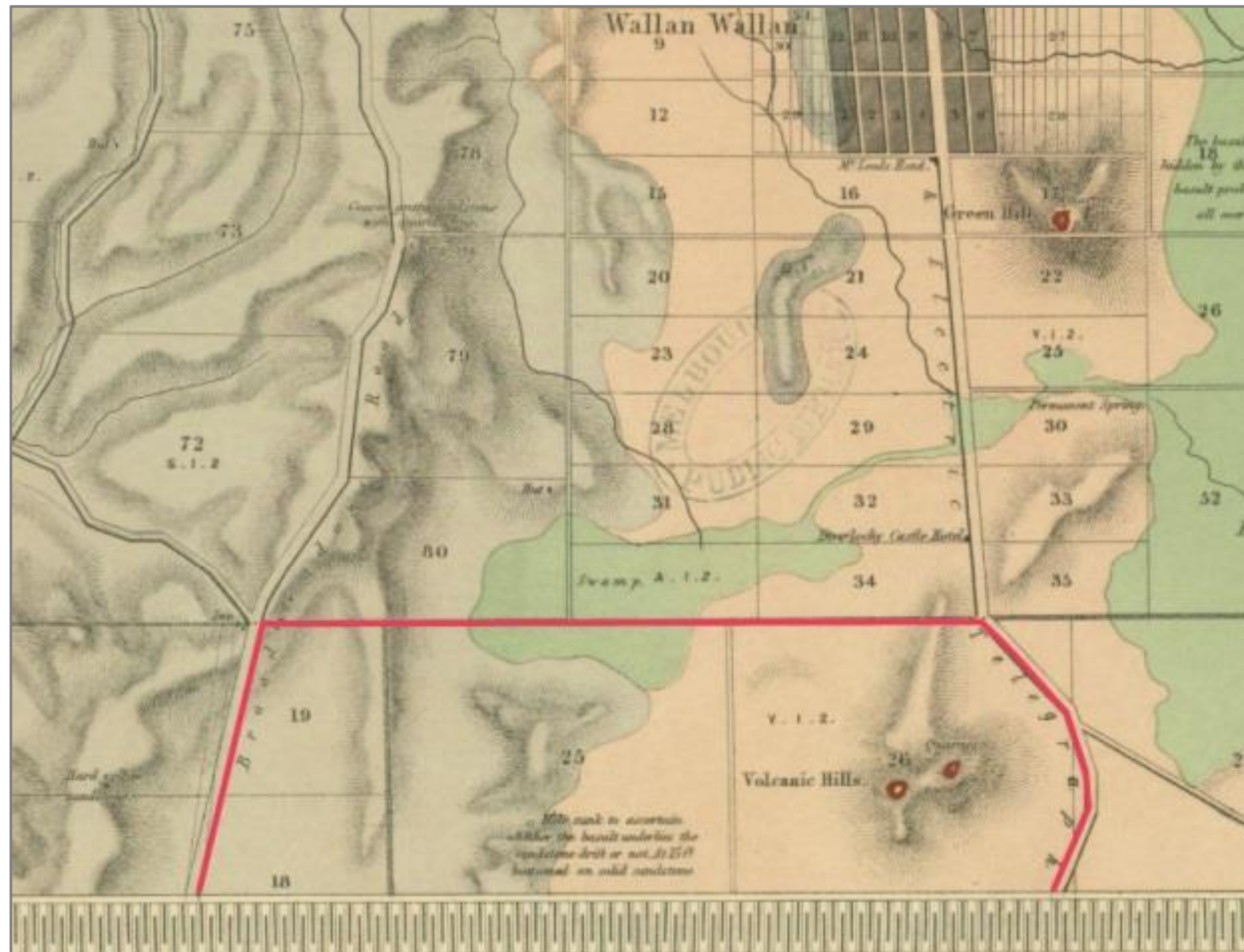


Figure 6: 1856 Geological map of the northern portion of the study area Source: *Parts of parishes of Darraweit Guim, Kalkallo, Mickleham and Bolinda* [cartographic material] / surveyed, engraved and published under the direction of Alfred R. C. Selwyn, Govt. Geologist at the Geological Survey Office, Melbourne ; geologically surveyed by Norman Taylor, Assistant Geologist, 1856 ; hills lithographed by R. Shepherd

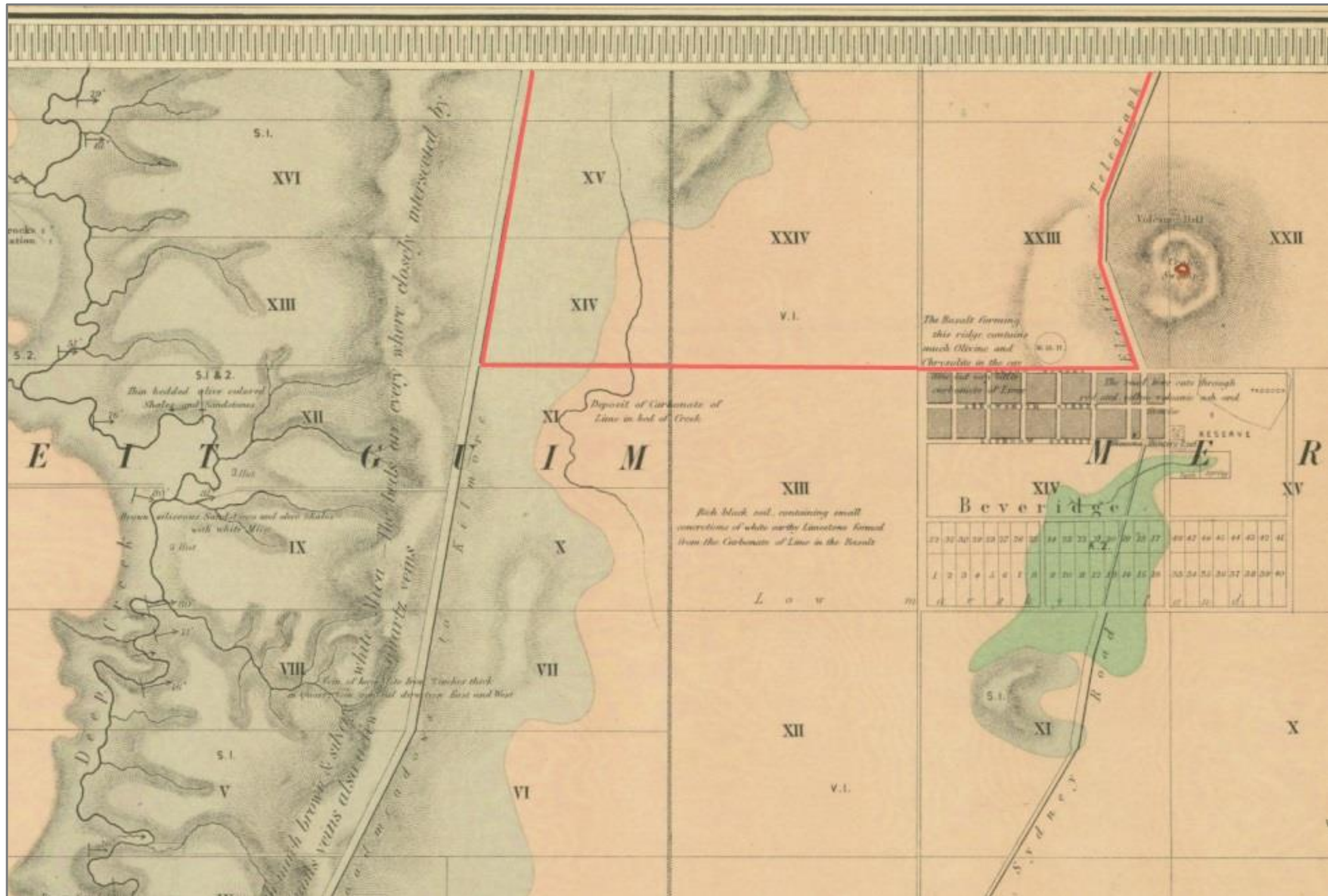


Figure 7: 1956 Geological map of the southern portion of the activity area Source: Parts of parishes of Darraweit Guim, Kalkallo, Mickleham and Bolinda [cartographic material] / surveyed, engraved and published under the direction of Alfred R. C. Selwyn, Govt. Geologist at the Geological Survey Office, Melbourne ; geologically surveyed by Norman Taylor, Assistant Geologist, 1856 ; hills lithographed by R. Shepherd

Aerial photographs are available for varying sections of the study area from 1972 and 1976. Earlier aerial photographs were either unavailable or at very poor resolution.

The 1972 photograph shows the entire study area (Figure 8), in a rural setting with the only distinguishable features being farm dams, planted wind breaks and farm structures (most likely including, homes, sheds and outbuildings etc.) within the study area. There are no specific features likely to be historic places visible within the study area on this aerial photograph.

The 1976 photograph is at a better scale, however, only the southern portion of the study area is visible. Farm dams, structures such as homes and outbuildings and vehicle tracks are all visible as well as planted wind breaks. There are also areas of ploughing visible and a racetrack can be seen in the south western portion of the study area.

Current aerial imagery demonstrates that there has been only limited change in the study area since the 1970's. A large portion of the study area is now owned and managed by Yarra Valley Water as an area for flood run off. Other portions of the study area are now covered in pine plantations as part of Christmas tree farms. A very large dam has been installed in the north central portion of the study area. The rises which were described on the early geological maps outlined above remain visible on the current aerial photography. A basic stone wall enclosure can be seen in the southern half of the study area within property five, which may have been used to pen animals (Figure 11).

Therefore, in summary specific use and European occupation indicated in the study area is as follows:

- Murray, Barry and Clarke were the first Europeans within the study area. Given the size of each of these parcels use of the land for sheep grazing during the early phase of post-contact settlement is likely;
- Early geological mapping does not indicate that there were any structures present in the study area in 1856 although a quarry is indicated in the north-east portion of the PSP. If structures were present it is fair to presume they would be annotated on these plans because buildings outside the study area, such as the Inverlochy Castle Hotel are noted on these maps;
- Aerial photographs from the early 1970s confirm the presence of numerous structures in the study area and a stone wall enclosure in the southern part of the study area. It is not possible to determine their age from a desktop assessment, however, they were inspected during the archaeological survey (described later in the report).

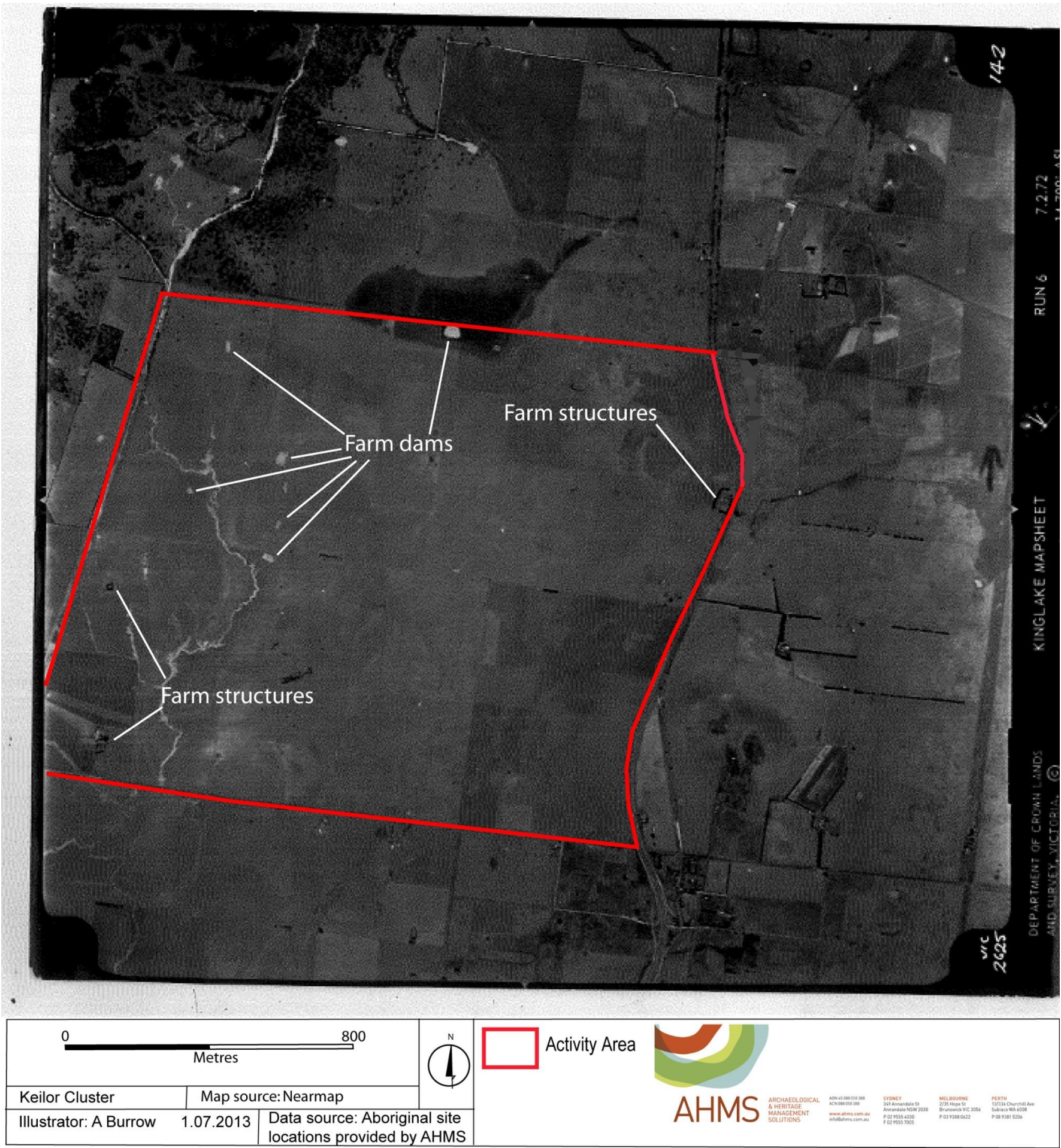


Figure 8: 1972 aerial photograph of the study area

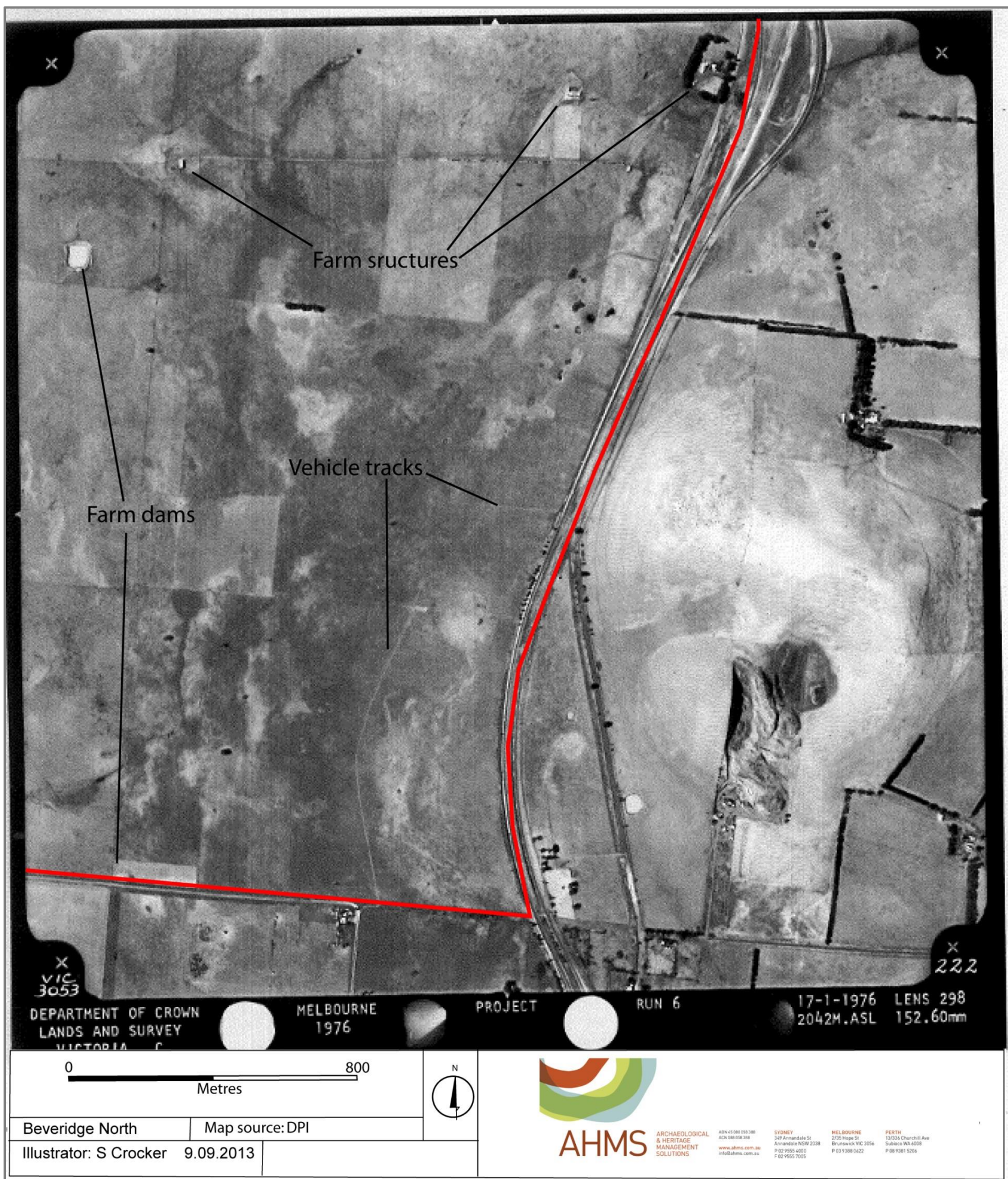


Figure 9: 1976 aerial photograph of the south eastern portion of the study area



Figure 10: Current aerial image of the northern portion of the study area

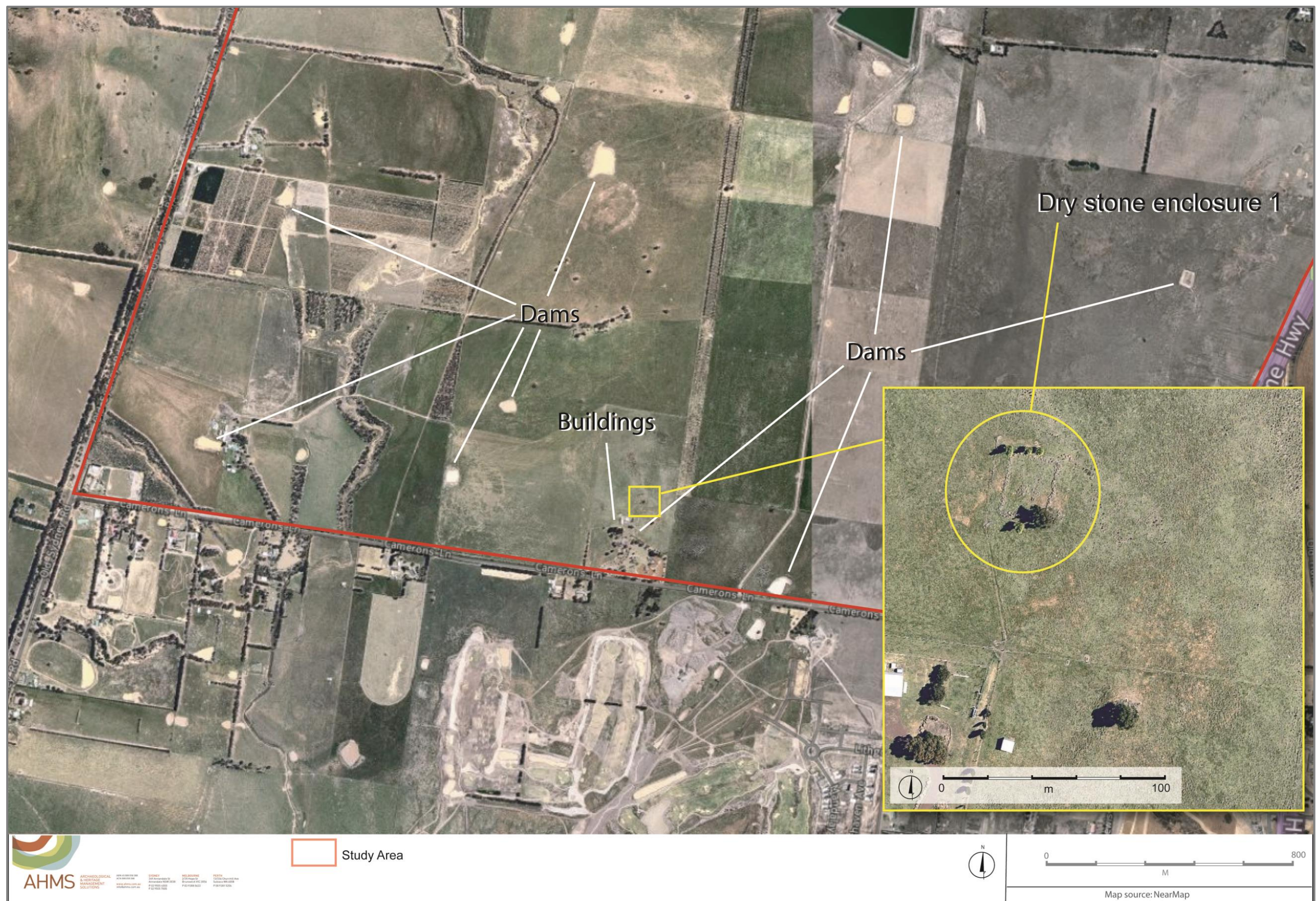


Figure 11: Current aerial image of the south of the study area, showing potential dry stone enclosure

4.4 Predictive Model for Study Area

Based on the desktop assessment, features which may be present within the study area are likely to include structures associated with pastoralism or agriculture such as stock pens, sheds or outbuildings, and various forms of fencing including post and rail and dry stone walling. There may also be evidence of historical quarrying within the study area. Any post contact sites that are located within the study area are likely to be associated with Victoria's early pastoral and agricultural history.

5 PREVIOUS STUDIES

5.1 Broad Studies

5.1.1 Mitchell Shire Stage One Heritage Study, 2002

Lorraine Huddle Pty Ltd was commissioned by Mitchell Shire Council and Heritage Victoria to prepare a broad heritage study for the Shire of Mitchell. The objective of this study was to identify and record post-colonial places of potential cultural significance in the study area; identify and develop potential heritage precincts in the study area, prepare a draft thematic history and estimate the resources required to investigate further³².

5.1.2 Mitchell Shire Stage Two Heritage Study Vol. 1-5, 2006.

Lorraine Huddle Pty Ltd was commissioned by Mitchell Shire Council and Heritage Victoria to prepare a broad heritage study for the Shire of Mitchell. The objective of stage two was to undertake detailed fieldwork for twenty two potential heritage precincts, research and write the history of the places and their physical fabric and provide a statement of cultural significance for each. The study objectives were also to write the history of forty individual places outside the precinct and provide statements of significance. This study identified 1315 individual places of potential significance. As a result of the study 564 places within 20 precincts were recommended for Heritage Overlay Protection, along with a further 68 individual places. None of these places were located within the current study area³³.

5.1.3 The Mitchell Shire Heritage Amendment - Review of heritage precincts, 2012

This review of the aforementioned studies was commissioned by Mitchell Shire Council and completed by Context Pty Ltd. This study identified 23 places of potential individual significance, within precincts originally identified in the 2006 study above. This review found that some precincts were not significant and others required boundary changes. As a result a number of places, no longer within these precincts required individual review³⁴. None of the places investigated as part of Context's study were located within the current study area.

5.1.4 Mitchell Shire Stage 2 Heritage Study Review, 2013.

Context Pty Ltd was appointed in 2013 to undertake a review of 48 places to determine the level of heritage significance and provide recommendations to Council regarding the appropriateness for Heritage Overlay controls on these places. The main tasks of this study were to assess the cultural heritage significance, prepare new or updated statements for places assessed to be of local significance, make recommendations regarding heritage overlay controls and update the Mitchell Shire Hermes database. None of the places investigated as part of the review were located within the current study area.³⁵

³² Lorraine Huddle Pty Ltd, Mitchell Shire Stage One Heritage Study 2002

³³ Lorraine Huddle Pty Ltd, Mitchell Shire Stage Two Heritage Study Vol 1-5 2006

³⁴ Context, The Mitchell Shire Heritage Amendment - Review of heritage precincts, 2012

³⁵ Context, Mitchell Shire Stage 2 Heritage Study Review, 2013

5.2 Detailed Assessments

5.2.1 Mandalay Estate, Precinct 1 Beveridge, Archaeological and Heritage Assessment 2006

Andrew Long and Associates were commissioned by Beveridge Developments Pty Ltd to prepare an Aboriginal and Historic heritage assessment to the south of the study area. One historic place was located during the survey for this project (H7823-0069). This site is described as a scatter of artefacts, alignment of basalt field stones and a previous floor of a structure and was given a local significance rating. Recommendations were provided in relation to this site, outlining two options:

- Option A: If ground disturbing works can be avoided in the location of the site, then the site should be planned and recorded thoroughly and potentially a consent to disturb could be sought to cover the site in landscaped areas.
- Option B: If ground disturbing works cannot be avoided then limited subsurface excavation should be undertaken to determine the nature of the site. A consent to disturb permit would need to be obtained from HV in order for works to proceed³⁶.

5.2.2 An Archaeological Assessment at 2140 Merriang Road Beveridge, 2007

Terraculture Pty Ltd were commissioned to prepare an Aboriginal and Historic archaeological assessment for land at 2140 Merriang Road Beveridge, 4km east of the study area. There were no historical sites located within the study area and it was determined that there was very little potential for such sites to exist³⁷.

5.2.3 An archaeological Survey: "Oakfield" Stewart Street, Beveridge, 2004

Terraculture Pty Ltd were commissioned by Balcon Enterprises Pty Ltd to prepare an archaeological assessment relating to both Aboriginal and post-contact heritage for the Oakfield Estate on Stewart St Beveridge located 1.5km east of the study area.

During the archaeological survey, two historic places were identified within the study area. These sites were recorded on the Heritage inventory as Beveridge Brick Scatter (H7823-0052) and 'Oakfield' Shearing Shed (H7823-0053).

The Beveridge Brick Scatter was located next to a rail reserve and is described as a scatter of old bricks, possibly in association with a stand of peppercorn trees. It was recommended that this site be investigated further to discover the surface and subsurface extent of the site:

*"Oakfield Shearing shed is a collapsed shearing shed complex constructed of round timbers and corrugated iron. A subsequent fire exposed bluestone foundations, a concrete mounting block and brick drain. Further research and further fieldwork was recommended for this site prior to any development of the area"*³⁸.

³⁶ Chandler, J Mandalay Estate, Precinct 1 Beveridge, Archaeological and Heritage Assessment 2006

³⁷ Terraculture Pty Ltd, An Archaeological Assessment at 2140 Merriang Road Beveridge, 2007

³⁸ Terraculture Pty Ltd, An Archaeological Survey: "Oakfield" Stewart Street, Beveridge, 2004

6 ARCHAEOLOGICAL SURVEY

6.1 Preamble

An archaeological survey was carried out within the study area on 23-26 September 2013. The survey was conducted by AHMS archaeologists Adrian Burrow, Elizabeth Foley and Simon Crocker. The purpose of the survey was to identify any surface post contact archaeological sites within the study area and identify any potential subsurface deposits that may be within the study area.

Initial desktop research was used to inform the methodology used in the archaeological survey. As discussed in section 4 of this report, historical and current aerial imagery was analysed in order to identify potential post- contact features in the study area and provide target areas to focus on during the archaeological survey. Survey target areas included (see Figures 7 - 11):

- The stone wall enclosure identified during the desktop assessment in the southern
- The boundaries of all properties to identify whether historic stone walls are present.
- Buildings, structures (and any former buildings / structures shown on historical aerial photography) were inspected to determine their likely age and whether or not they have any historical heritage significance or historical archaeological potential. The survey also examined these areas to identify any associated outbuildings or other forms of pastoral infrastructure such as sheep dips, sheds and wells etc that may have historical heritage significance.
- The quarry site in the north-western portion of the PSP shown on the 1856 geological map.

The survey was conducted using a 4x4 vehicle to move between the areas of interest highlighted in the desktop assessment which were then surveyed on foot.

If post contact sites were located, they were mapped using a differential GPS and photographed, drawn and described in accordance with Heritage Victoria standards and guidelines. Records of features were compiled to assist with the field survey analysis and significance assessment. Where considered appropriate more detailed archival recording has been recommended.

6.2 Results

There were two dry stone enclosures and one section of dry stone wall identified during the archaeological survey of PSP 1059 Beveridge North West (Figure 12).

Dry Stone Enclosure One

The stone wall enclosure identified on current aerial imagery within property five during the desktop assessment was inspected during the survey. The survey identified a dry stone walled enclosure measured approximately 25m x 16m. This enclosure is located at the following co-ordinates: E318520 N5851680.

The dry stone walls are in a very poor condition and only one course of stone remains in place and even these do not appear to be in complete alignment which may be the result of reuse of some of the stone or simply the effects of the walls gradual disintegration. It is likely that this enclosure was once used for penning animals; however, it is clear that the enclosure has no potential for sub surface archaeological materials as the lower course of the walls were built from ground level up and no excavation of wall foundations is evident (Figure 13).

Dry Stone Enclosure Two

An additional much smaller enclosure was located in close proximity to the enclosure described above, also within property five. This enclosure is likely to have also been used for penning animals. This enclosure was also in a very poor condition and only one course of stone remained. This enclosure measures approximately 8m x 7m. The enclosure is located at the following co-ordinates: E 318565 N 5851604. This enclosure has no sub surface archaeological potential because it too was built directly onto the ground surface without any excavation of foundations (Figure 14).

Dry Stone Wall

A small section of dry stone wall was located during the survey of property seven. This wall is in an extremely degraded condition and consists of just one course of stone running for approximately 95m on a north-south alignment (Figure 15). This section of dry stone wall is located between co-ordinates: E 320352 N5851509 and E 320356 and N 5851603. This walls condition is such that it is not possible to determine any information regarding its construction type or original height and width dimensions.

The general location of the quarry shown on the 1856 Geological Survey Map discussed above was also surveyed for evidence of historic quarrying. There was no evidence either in this location or across any of the crest landforms for historic quarrying.

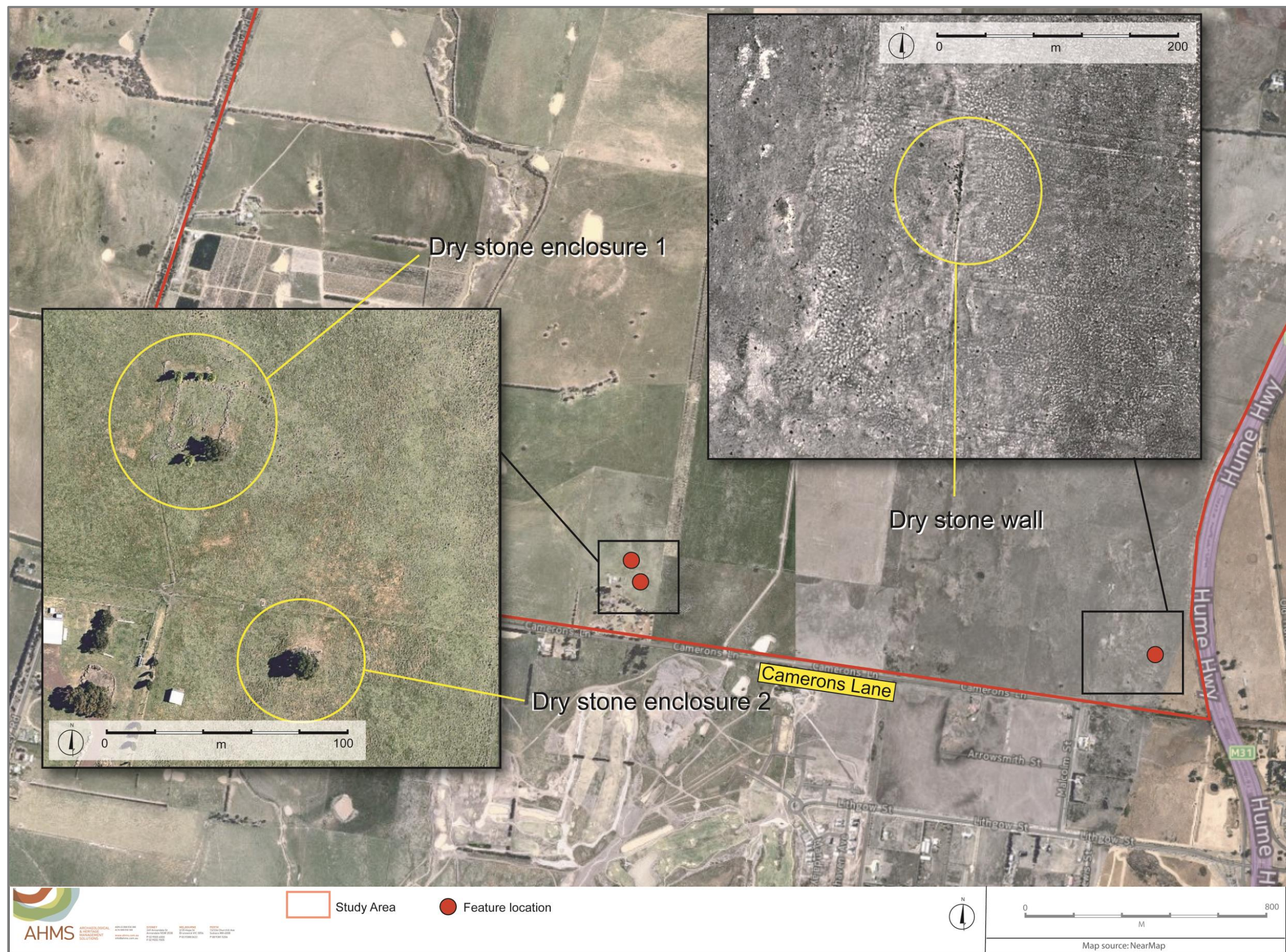


Figure 12: Dry stone features identified within the study area



Figure 13: Dry stone enclosure one



Figure 14: Dry stone enclosure two



Figure 15: Dry stone wall in extremely poor condition within property 7

7 CONCLUSIONS

7.1 Discussion

Research undertaken for this assessment found that the study area was part of an extensive pastoral landscape from the mid-nineteenth Century. Our review of thematic and site specific history indicates use of the study area was consistent with the typical pastoral land uses employed in the Mitchell Shire area through the 19th century and most of the 20th century.

Desktop research indicated that any post contact features present were likely to be associated with pastoralism and the features most likely to be present within the study area were, farmsteads or homesteads with associated out buildings such as shearing sheds, sheep dips and wells. Our predictive model also suggested dry stone walls may be found within the study area as well as evidence of historic quarrying activities particularly in the north of the study area, associated with the crests.

The archaeological survey identified a section of dry stone wall within property seven and two dry stone enclosures within property five were located. Each of these were in very poor condition and offered no potential for sub surface archaeological deposits. It is not possible to determine a date range for these features simply because there is no precise contextual information associated with them and their level of degradation is such that the original construction type and style could not be identified. A broad date range of mid- nineteenth to early twentieth century when pastoralism was developing in the area is possible. The significance of these items is assessed in chapter 8 of the report.

These features do not meet the threshold required for registration on the Heritage Inventory (held by Heritage Victoria) because they do not exhibit any archaeological potential. Heritage Victoria are also in a process of "de-listing" dry stone walls which are currently included on the Heritage Inventory.

There are obligations in relation to these features under the Mitchell Shire Local Planning Scheme which will be discussed further in section 8 and 9.

Inspection of the remaining buildings and structures within the study area (and former structures indicated on historical aerial photography) did not identify any further built, archaeological or potential archaeological places that would meet minimum threshold requirements for registration on state or local government heritage registers, inventories or schedules.

8 HERITAGE SIGNIFICANCE

Cultural significance is the expression of the cultural value afforded a place, site or item (such as an archaeological deposit). The process of finding out whether a place as a whole, or its features or components such as buildings, landscape or potential archaeological remains are important or not, is called assessing significance.

The cultural heritage values of a place or site are broadly defined in the Burra Charter as the 'aesthetic, historic, scientific or social values for past, present or future generations'. Generally, archaeological sites are assessed in terms of scientific significance. Each of the post-contact sites outlined in this report will be assessed in relation to their scientific significance in Section 7.2.1.

8.1 Scientific Significance Assessment

8.1.1 Method

Scientific significance of heritage places is commonly assessed using criteria outlined by Bowdler³⁹ and Sullivan and Bowdler⁴⁰. These assessments use three criteria, site contents, site condition and representativeness.

Site Contents Rating

1 No cultural materials remains

2 Site contains a small number of limited range of cultural materials with no evident stratification

3 Site contains:

a. A larger number, but limited range of cultural materials; and/or

b. some intact stratified deposit

4. Site contains:

a. A large number and diverse range of materials; and/or

b. Largely intact stratified deposit; and/or

c. Surface spatial patterning of cultural materials that still reflect the way in which the cultural materials were laid down

Site Condition Rating

0 Site destroyed

1. Site in a deteriorated condition with a high degree of disturbance but with some cultural materials remaining

2. Site in a fair to good condition, but with some disturbance

3. Site in an excellent condition with little or no disturbance..

Representativeness

1 Common occurrence

2 Occasional occurrence

3 Rare occurrence

Overall Scientific Significance Rating

1-3 Low

4-6 Moderate

³⁹ Bowdler, S 1981 'Unconsidered Trifles? Cultural Resource Management, environmental impact statements and archaeological research in New South Wales', Australian Archaeology. 12 pp 123-133.

⁴⁰ Sullivan and Bowdler (eds) 1984 Site surveys and Significance Assessment in Australian Archaeology. Proceedings of the 1981 Springwood conference on Australian Prehistory, Research School of Pacific Studies, ANU Canberra.

7-9 High

8.1.2 Evaluation

Our evaluation of the scientific significance of the dry stone walls and dry stone enclosure identified within the study area is shown in Table 3 below.

Table 2: Scientific Significance Ratings

Place Description	Site Contents Rating	Site Condition Rating	Representativeness	Overall Scientific Significance rating
Dry Stone Enclosure One	0	0	1	1 - Low
Dry Stone Enclosure Two	0	0	1	1 - Low
Dry Stone Wall	0	0	1	1 - Low

8.2 Heritage Victoria Significance Assessment Criteria

8.2.1 Themes and Criteria

Heritage Victoria has developed a Framework of Historical Themes to increase people's understanding and appreciation of Victoria's rich heritage. The Framework's purpose is to highlight what is distinctive about Victoria and to increase awareness and appreciation of the state's heritage. Historical themes are used in the Victorian Heritage management system to assist significance assessments of heritage places and objects.

The Historical Themes relevant to the current study have already been discussed in Section 4.1. In 2008 the Victorian Heritage Council adopted a set of criteria for assessing cultural heritage significance. These criteria are designed to assist in determining whether a heritage place holds, Universal, National, State, Local or no significance and determining those places or objects which warrant inclusion on the Victorian Heritage Register. Each of the post-contact sites identified within the study area have been assessed against this criteria as outlined below.

Criteria A: Importance to the course, or pattern of Victoria's cultural history

Criteria B: Possession of uncommon, rare or endangered aspects of Victoria's cultural history

Criteria C: Potential to yield information that will contribute to an understanding of Victoria's cultural history

Criteria D: Importance in demonstrating the principal characteristics of a class of cultural places and objects

Criteria E: Importance in exhibiting particular aesthetic characteristics

Criteria F: Importance in demonstrating a high degree of creative or technical achievement at a particular period

Criteria G: Strong or special association with a particular community or cultural group for social, cultural or spiritual reasons. This includes the significance of the place to the indigenous peoples as part of their continuing cultural traditions

Criteria H: Special association with the life or works of a person, or group of persons, of importance in Victoria's history.

8.2.2 Dry Stone Enclosure One

Table 3: Dry Stone Enclosure One - Cultural Heritage Significance

Criteria	Assessment
Criterion A:	This site is not considered to meet the threshold significant heritage levels that are relevant to this criterion
Criterion B:	This site is not considered to meet the threshold significant heritage levels that are relevant to this criterion
Criterion C:	This site is not considered to meet the threshold significant heritage levels that are relevant to this criterion
Criterion D:	This site is not considered to meet the threshold significant heritage levels that are relevant to this criterion
Criterion E:	This site is not considered to meet the threshold significant heritage levels that are relevant to this criterion
Criterion F:	This site is not considered to meet the threshold significant heritage levels that are relevant to this criterion
Criterion G:	This site is not considered to meet the threshold significant heritage levels that are relevant to this criterion
Criterion H:	This site is not considered to meet the threshold significant heritage levels that are relevant to this criterion
Significance	Nil significance

8.2.3 Dry Stone Enclosure Two

Table 4: Dry Stone Enclosure Two- Cultural Heritage Significance

Criteria	Assessment
Criterion A:	This site is not considered to meet the threshold significant heritage levels that are relevant to this criterion
Criterion B:	This site is not considered to meet the threshold significant heritage levels that are relevant to this criterion
Criterion C:	This site is not considered to meet the threshold significant heritage levels that are relevant to this criterion
Criterion D:	This site is not considered to meet the threshold significant heritage levels that are relevant to this criterion
Criterion E:	This site is not considered to meet the threshold significant heritage levels that are relevant to this criterion
Criterion F:	This site is not considered to meet the threshold significant heritage levels that are relevant to this criterion
Criterion G:	This site is not considered to meet the threshold significant heritage levels that are relevant to this criterion
Criterion H:	This site is not considered to meet the threshold significant heritage levels that are relevant to this criterion
Significance	Nil Significance

8.2.4 Dry Stone Wall

Table 5: Dry Stone Wall - Cultural Heritage Significance

Criteria	Assessment
Criterion A:	This site is not considered to meet the threshold significant heritage levels that are relevant to this criterion
Criterion B:	This site is not considered to meet the threshold significant heritage levels that are relevant to this criterion
Criterion C:	This site is not considered to meet the threshold significant heritage levels that are relevant to this criterion
Criterion D:	This site is not considered to meet the threshold significant heritage levels that are relevant to this criterion
Criterion E:	This site is not considered to meet the threshold significant heritage levels that are relevant to this criterion

Criteria	Assessment
Criterion F:	This site is not considered to meet the threshold significant heritage levels that are relevant to this criterion
Criterion G:	This site is not considered to meet the threshold significant heritage levels that are relevant to this criterion
Criterion H:	This site is not considered to meet the threshold significant heritage levels that are relevant to this criterion
Significance	Nil significance

8.3 Overall significance ratings

The significance ratings outlined in the sections above are combined in the table below to give a clear indication of the cultural heritage significance of each post-contact site within the study area.

Table 6: Overall significance rating

Site Description	Scientific Significance	HV Heritage Significance Level
Dry Stone Enclosure One	Low	Nil
Dry Stone Enclosure Two	Low	Nil
Dry Stone Wall	Low	Nil

8.3.1 Relevant significant thresholds for the study area

Heritage Overlay - Sites which meet thresholds for local significance

None of the post contact sites located within the study area meet the state significant thresholds required by Heritage Victoria (outlined above) for inclusion on the Victorian Heritage Register. This is because none of the places identified within the subject land have a level of rarity, importance, aesthetic or associative significance that is unusual, exceptional or rare at a state level. There are many similar examples of the types of heritage places found within the study area that exist across the region and across the state. Therefore, the level of significance that can be ascribed to the heritage places within the subject land is local. Therefore, in our opinion, none of the sites warrant consideration for registration on the Victorian Heritage Register.

The statutory mechanism which protects the largest number of places in Victoria and is most relevant to the study area is the Heritage Overlay implemented under the Mitchell Shire local planning scheme. Generally, a place that is of heritage value to a locality or municipality has the potential to be recognised as being of local cultural significance and may be included in the Heritage Overlay of the local planning scheme⁴¹.

On the basis of the criteria outlined above, none of the features located within the study area display enough significance to warrant inclusion on the Mitchell Shire Heritage Overlay. These places do however; represent the development of pastoralism in the Beveridge area and where possible should be considered for retention or incorporation into planning design.

Heritage Inventory - Sites with archaeological potential

The Heritage Victoria Heritage Inventory is designed to provide protection to known historical archaeological sites in Victoria and includes both locally significant and state significant historical archaeological sites.

⁴¹ Heritage Council of Victoria 2012, The Victorian Heritage Register Criteria and Threshold Guidelines.

A post-contact site is considered to have archaeological potential when excavation at the site is likely to garner further information relating to past human activities beyond what can be observed from the site in its current condition. Essentially, a site is considered to have archaeological potential if there is a potential sub-surface component.

As outlined in Section 2.3 all sites that are considered to have some archaeological potential should be recorded on the Victorian Heritage Inventory.

There are no features within the current study area which meet these criteria.

Dry stone walls in the study area

The dry stone walls and enclosure located within the study area do not meet the necessary significance thresholds to warrant inclusion on the Mitchell Shire Heritage Overlay as has been outlined above.

As outlined in Section 3 and 6.3, dry stone walls are not considered to have any archaeological potential and therefore are no longer included on the Heritage Inventory.

As has been previously outlined, the Mitchell Shire Planning Scheme includes a clause on dry stone walls (Clause 52.37). This clause requires a permit to be obtained from Council should a dry stone wall built prior to 1940 require alteration or removal, if structures are identified on the associated schedule. The three heritage places identified within the PSP have not been identified in the schedule associated with Clause 52.37 in the Mitchell Shire Planning Scheme, and as such modification to the structures will not require application for a permit.

9 RECOMMENDATIONS

The following recommendations are designed to provide advice regarding the management of the post-contact heritage places located within the study area throughout future planning and development processes.

9.1 Dry Stone Walls

1. In accordance with the Mitchell Shire local planning scheme and accepted best heritage practice, the dry stone walls and enclosure located within the study area should be retained and incorporated into development design wherever feasible provided they are not a risk to the public or compromise urban structure.
2. If it is not possible to retain all of the walls, consideration should be given to re-using the stone in new features of the development, such as incorporating them into new stone walls or other landscaping features.
3. Before any of the dry stone walls are disturbed or destroyed they should be archivally recorded in accordance with Heritage Victoria archival photography guidelines and standards. Copies of the archival photographic record should be provided to Council and to Heritage Victoria for their records.

9.2 Contingency Plans

1. There always remains a small possibility that further undocumented post contact heritage places may be present, particularly buried below current ground surfaces within the activity area. The risk that further as yet undocumented places are present within the activity area is considered to be very low.
2. If any such undocumented places or historical archaeological deposits are encountered during works, the surrounding area within 10 metres of the deposit or feature should be fenced off and no further work should take place within this zone. A suitably qualified heritage consultant or archaeologist should be engaged to assess the deposits and consult with Heritage Victoria and Mitchell Shire Council in order to determine the best way to proceed. It should be noted that historical archaeological sites are provided with blanket protection in Victoria under the Heritage Act.

REFERENCES

Gray, ST. The History of the Shire of Whittlesea 1854-1960, (Unpublished Manuscript 8962, State Library of Victoria).

Victoria Government Gazette No.3, 5 January 1917.

Victorian Year Book. Migration to Victoria (Assisted) 1945 to 1963.

Bride, T.F. (ed). Letters from Victorian Pioneers: being a series of papers on the early occupation of the colony, the Aborigines, etc. addressed by Victorian pioneers to His Excellency Charles Joseph La Trobe, Lieutenant Governor of the Colony of Victoria. (Heinemann: Melbourne, 1969).

Broome, R. The Victorians: Arriving (Fairfax, Syme & Weldon: Sydney, 1984). City of Whittlesea, Cultural Heritage Program Guide (2009).

Chandler, J Mandalay Estate, Precinct 1 Beveridge, Archaeological and Heritage Assessment 2006

Context Pty City of Whittlesea Heritage Study (2010a). Context Pty City of Whittlesea Archaeological Study (2010b).

Context, The Mitchell Shire Heritage Amendment - Review of heritage precincts, 2012

Context, Mitchell Shire Stage 2 Heritage Study Review, 2013

Heritage Victoria, Assessing the Cultural Heritage Significance of Places and Objects for Possible State Heritage Listing (2012).

Journal of Proceedings of Royal Historical Society, vol 7, 360.

Lewis-Jones, W. Where Have all the Flour Mills Gone? A History of W. S. Kimpton and Sons – Flour Millers 1875-1980 (Flourmillers' Council of Victoria: Melbourne, 1984).

Lorraine Huddle Pty Ltd, Mitchell Shire Stage One Heritage Study 2002

Lorraine Huddle Pty Ltd, Mitchell Shire Stage Two Heritage Study Vol 1-5 2006

Melbourne Metropolitan Board of Works. Plenty River Basin Study (Phase 1), (MMBW: Melbourne, May 1976).

Payne, J.W. The Plenty: A Centenary History of the Whittlesea Shire (Lowden Publishing: Kilmore, 1975).

Payne, J. W. Donnybrook-Kalkallo: 1855-1980 (Back to Kalkallo Committee: Kalkallo, 1980). Peel, Lynnette J. Rural Industry in the Port Phillip Region (MUP, 1974).

Priestly, Susan, The Victorians: Making their Mark, (Fairfax, Syme & Weldon: Sydney, 1984).

Terraculture Pty Ltd, An Archaeological Assessment at 2140 Merriang Road Beveridge, 2007

Terraculture Pty Ltd, An Archaeological Survey: "Oakfield" Stewart Street, Beveridge, 2004

Vines G. Built to Last; An historical and archaeological survey of Dry Stone Walls in Melbourne's Western Region (Melbourne's Living Museum of the West, 1990).

Maps, plans & other sources.

Map collection, State Library Victoria (SLV) on-line

Early Parish Plans, Maps, SLV

Victorian Department of Crown Lands and Survey, 1956, Darraweit Guim, County of Bourke

Victorian Department of Crown Lands and Survey, 1956, Merriang, County of Bourke

Parts of parishes of Darraweit Guim, Kalkallo, Mickleham and Bolinda [cartographic material] / surveyed, engraved and published under the direction of Alfred R. C. Selwyn, Govt. Geologist at the Geological Survey Office, Melbourne ; geologically surveyed by Norman Taylor, Assistant Geologist, 1856 ; hills lithographed by R. Shepherd

Websites.

Census Data - www.censusdata.abs.gov.au

DPI Geovic website - <http://new.dpi.vic.gov.au/earth-resources/products-and-services/online-services/geovic>

DPI Geological Maps -<http://nremapsc.nre.vic.gov.au/MapShare.v2/imf.jsp?site=em>

DSE Interactive Biodiversity Maps - <http://mapshare2.dse.vic.gov.au/MapShare2EXT/imf.jsp?site=bim>

Heritage Victoria's HERMES website - <http://applications.doi.vic.gov.au/hermesv6/Login.html>

http://www.mitchellshire.vic.gov.au/your_council/history.aspx accessed 27th September 2013

<http://forecast2.id.com.au/Default.aspx?id=250&pg=5000> accessed 26th September 2013

www.museumvictoria.com.au/origins/keydates.aspx?cid=13 accessed 26th September 2013

Heritage Listings.

Mitchell Shire Council 2013 Schedule to the Heritage Overlay

National Trust Register

Register of the National Estate

Victorian Heritage Inventory (VHI)

Victorian Heritage Register (VHR)

