

APPENDIX A

FIGURES



MEINHARDT

Level 11, 501 Swanston Street
Melbourne VIC 3000 Australia
T: +61 3 8676 1200
contact@meinhardtgroup.com
www.meinhardt.com.au
© Meinhardt 2022



0 5 10 20 30 40
Meters
Coordinate System: GDA 1994 MGA Zone 55

Legend



Investigation Sites

Figure 1 - Investigation Site Location Plan

Part of Preston Market Precinct
Land Capability Assessment

Victorian Planning Authority

Job No.: 124195

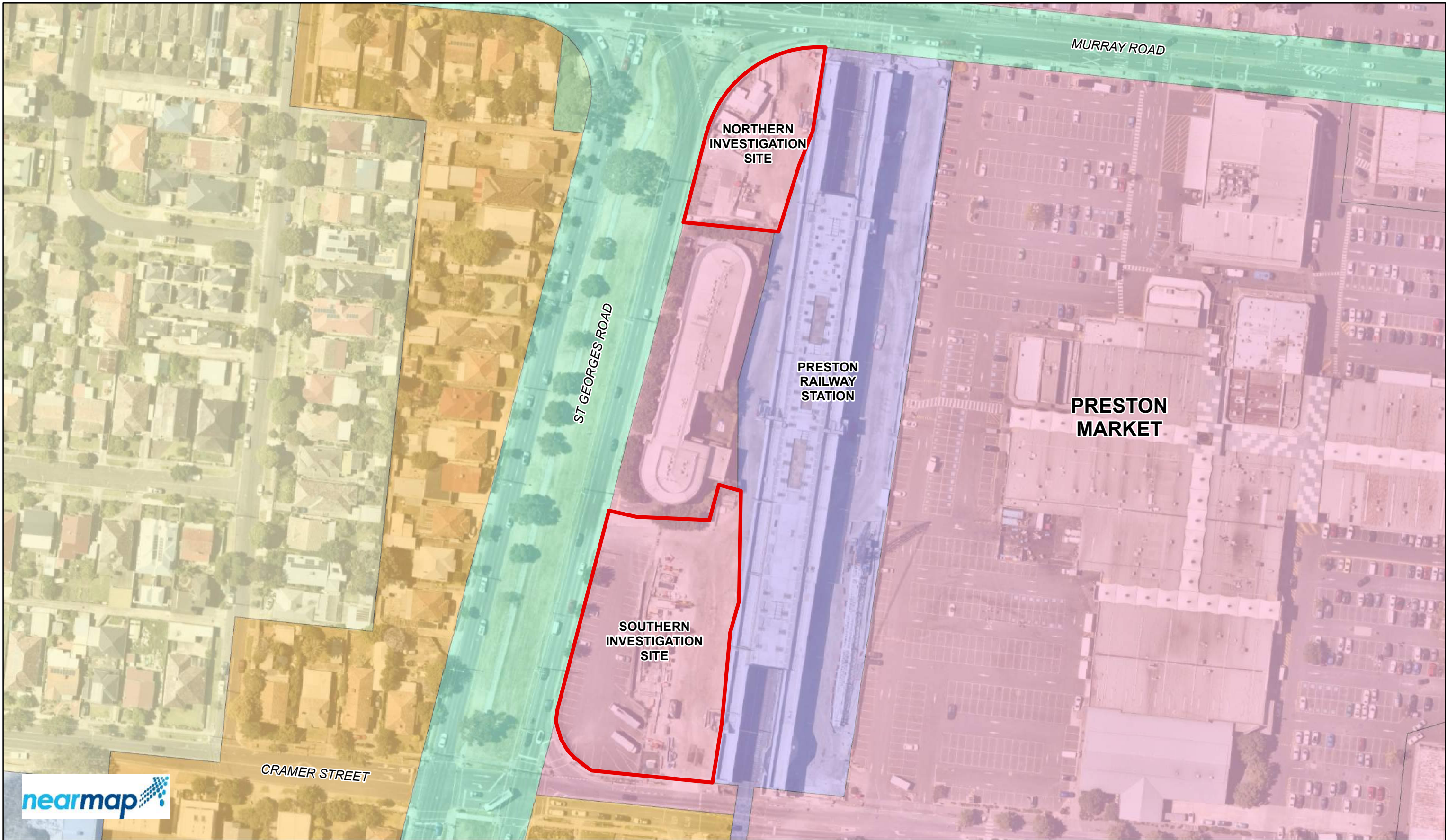
Ref No.: F0001

Rev: 0

Information Source: Cadastre and Planning Information 2022 - Spatial Datamart (VicMap); Investigation Sites 2022 - Meinhardt; Aerial Imagery 24/12/2021 - NearMap.

File Name/ Location: X:\124195 - VPA- Preston Market 2 sites LCA4_Delivery\5 ENV\4_GIS\2_ArcGISMAPS\124195_001_Site_Location_Plan.mxd

Disclaimer: Whilst all care has been taken in the preparation of this information, Meinhardt makes no representations or warranties regarding its completeness, suitability, accuracy or reliability for any particular purpose. Further, Meinhardt will not accept any responsibility or liability of any kind for any losses, damages or expenses that may be incurred by any party as a result of reliance upon this information, for any reason.



MEINHARDT

Level 11, 501 Swanston Street
Melbourne VIC 3000 Australia
T: +61 3 8676 1200
contact@meinhardtgroup.com
www.meinhardt.com.au
© Meinhardt 2022



0 4.25 8.5 17 25.5 34
Meters
Coordinate System: GDA 1994 MGA Zone 55

Legend



Investigation Sites



General Residential Zone



Priority Development Zone



Public Park and Recreation Zone



Public Use Zone - Education



Residential Growth Zone



State Transport Infrastructure Zone



Principal Road Network

Figure 2 - Planning Zones

Part of Preston Market Precinct
Land Capability Assessment

Victorian Planning Authority

Job No.: 124195

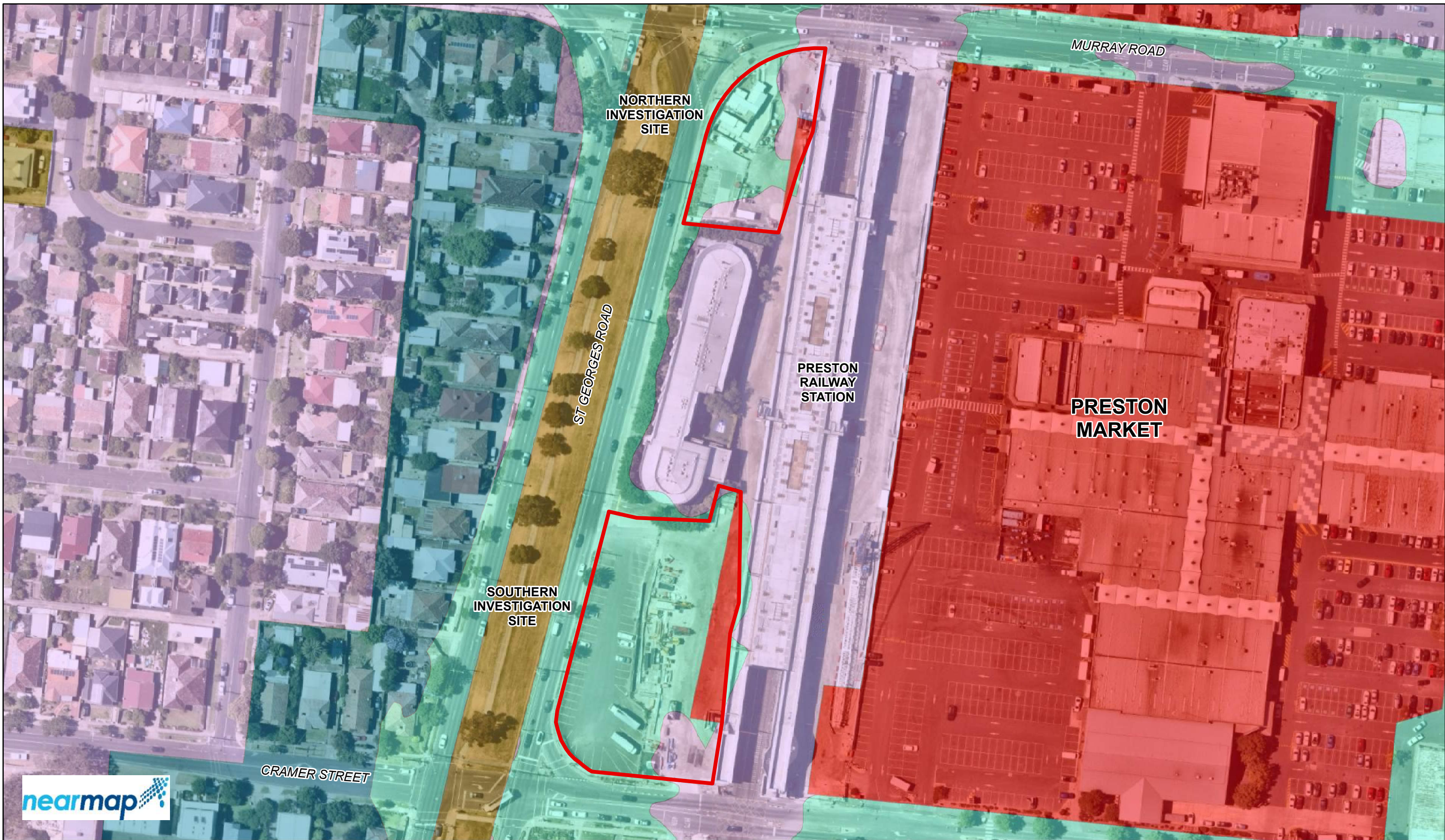
Ref No.: F0002

Rev: 0

Information Source: Cadastre and Planning Information 2022 - Spatial Datamart (VicMap); Investigation Sites 2022 - Meinhardt; Aerial Imagery 24/12/2021 - NearMap.

File Name/ Location: X:\124195 - VPA- Preston Market 2 sites LCA4_Delivery\5_ENV\4_GIS\2_ArcGISMAPS\124195_002_Site_Planning_Zones.mxd

Disclaimer: Whilst all care has been taken in the preparation of this information, Meinhardt makes no representations or warranties regarding its completeness, suitability, accuracy or reliability for any particular purpose. Further, Meinhardt will not accept any responsibility or liability of any kind for any losses, damages or expenses that may be incurred by any party as a result of reliance upon this information, for any reason.



MEINHARDT

Level 11, 501 Swanston Street
Melbourne VIC 3000 Australia
T: +61 3 8676 1200
contact@meinhardtgroup.com
www.meinhardt.com.au
© Meinhardt 2022



0 4.25 8.5 17 25.5 34
Meters
Coordinate System: GDA 1994 MGA Zone 55

Legend



Investigation Sites



Environmental Audit Overlay



Heritage Overlay



Special Building Overlay



Design and Development Overlay



Development Contributions Plan Overlay

Figure 3 - Planning Overlays

Part of Preston Market Precinct
Land Capability Assessment

Victorian Planning Authority

Job No.: 124195

Ref No.: F0003

Rev: 0

Information Source: Cadastre and Planning Information 2022 - Spatial Datamart (VicMap); Investigation Sites 2022 - Meinhardt; Aerial Imagery 24/12/2021 - NearMap.

File Name/ Location: X:\124195 - VPA- Preston Market 2 sites LCA4_Delivery\5_ENV\4_GIS\2_ArcGISMAPS\124195_003_Site_Planning_Overlays.mxd

Disclaimer: Whilst all care has been taken in the preparation of this information, Meinhardt makes no representations or warranties regarding its completeness, suitability, accuracy or reliability for any particular purpose. Further, Meinhardt will not accept any responsibility or liability of any kind for any losses, damages or expenses that may be incurred by any party as a result of reliance upon this information, for any reason.

