

---

# CROSKELL PSP

## Transmission Easement

---

### Easement Framework and Concept Package

July 2022

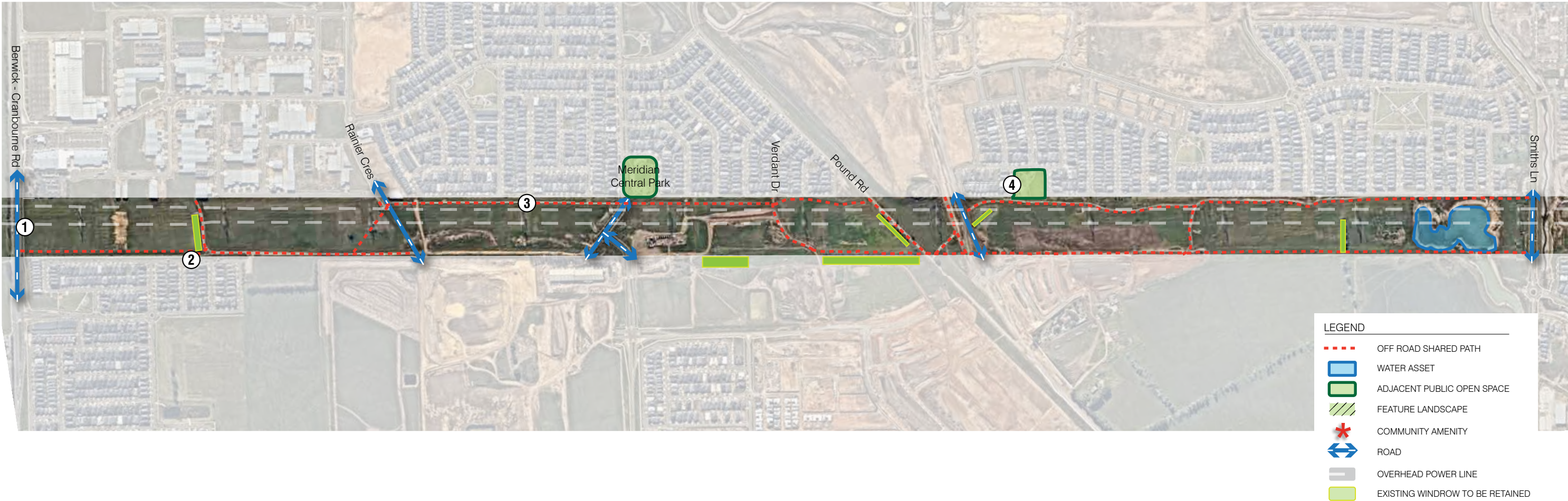




# CROSKELL PSP

## Transmission Easement Concept - Precedent Study 1

Thompsons Road PSP - Transmission Easement

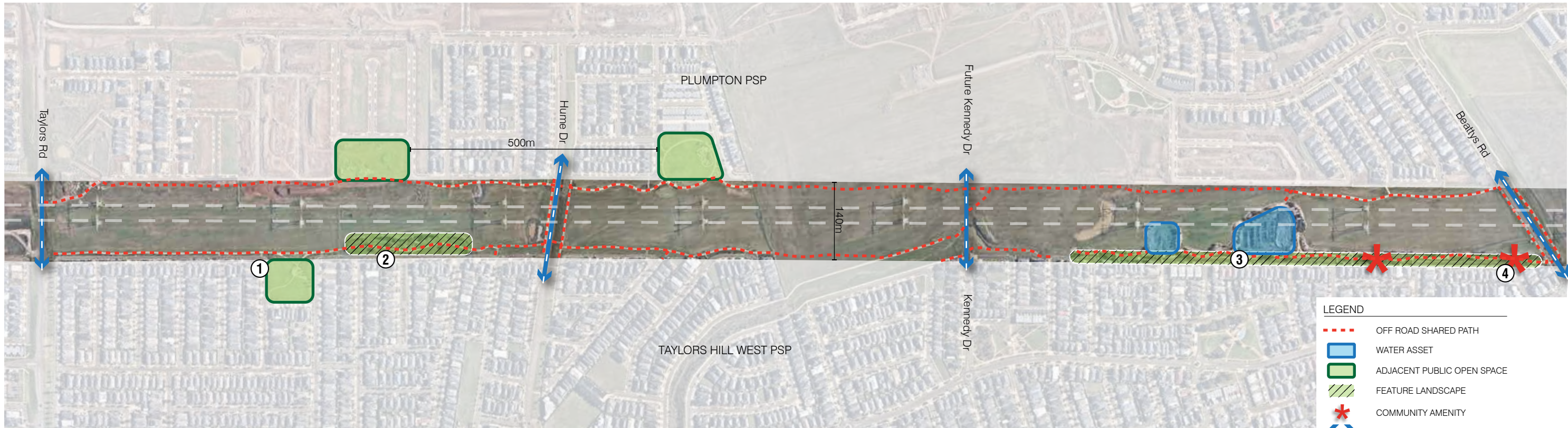




# CROSKELL PSP

## Transmission Easement Concept - Precedent Study 2

Plumpton PSP - Transmission Easement

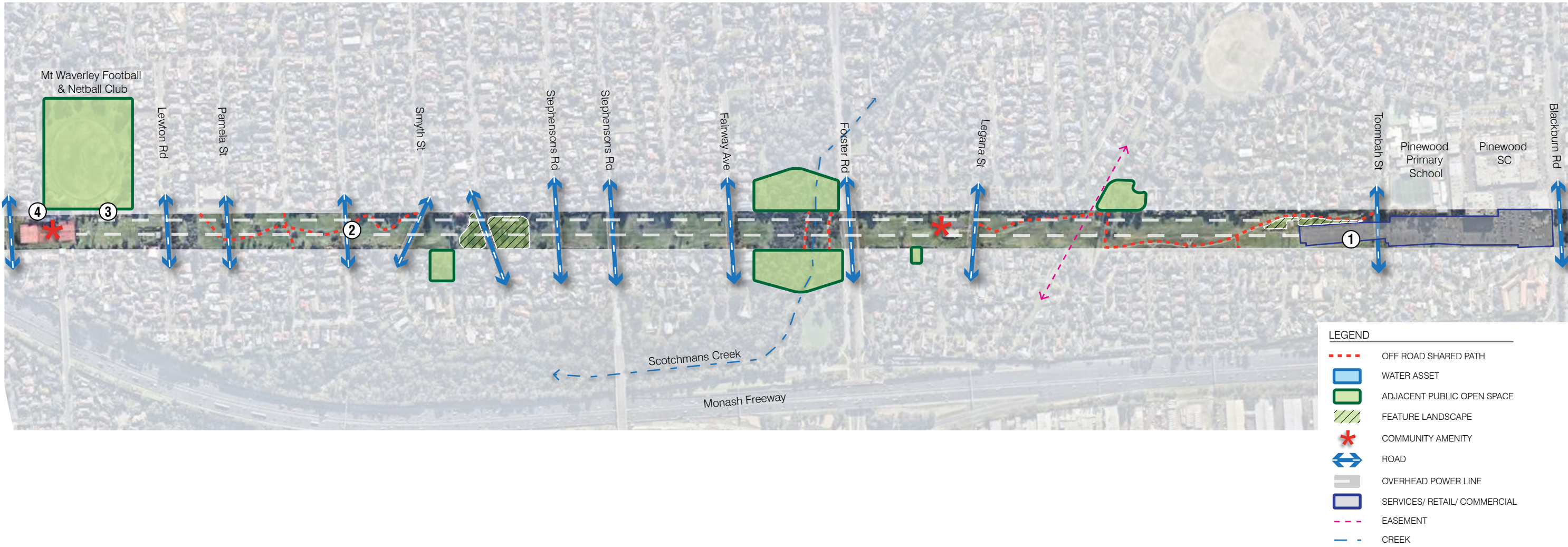




# CROSKELL PSP

## Transmission Easement Concept - Precedent Study 3

Pinewood - Transmission Easement



Easement Framework and Concept Package



# CROSKELL PSP

## Transmission Easement Concept - Precedent Study 4

Epping Road West- Transmission Easement





# CROSKELL PSP

## Transmission Easement Concept - Precedent Study 5

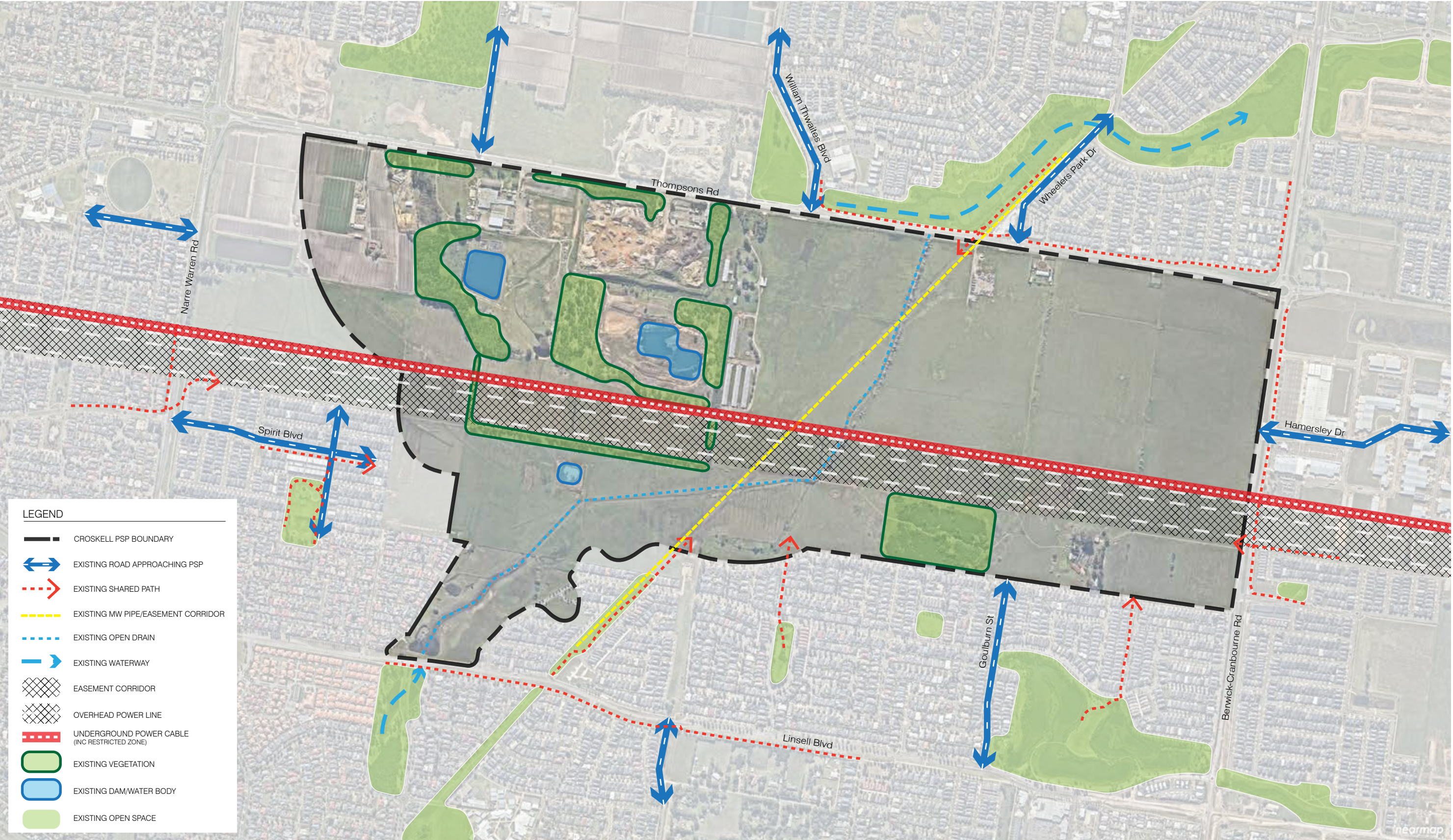
Ringwood - Eastlink (South of Canterbury Road), Transmission Easement





# CROSKELL PSP

## Transmission Easement Concept - Existing Conditions & Context





CROSKELL PSP

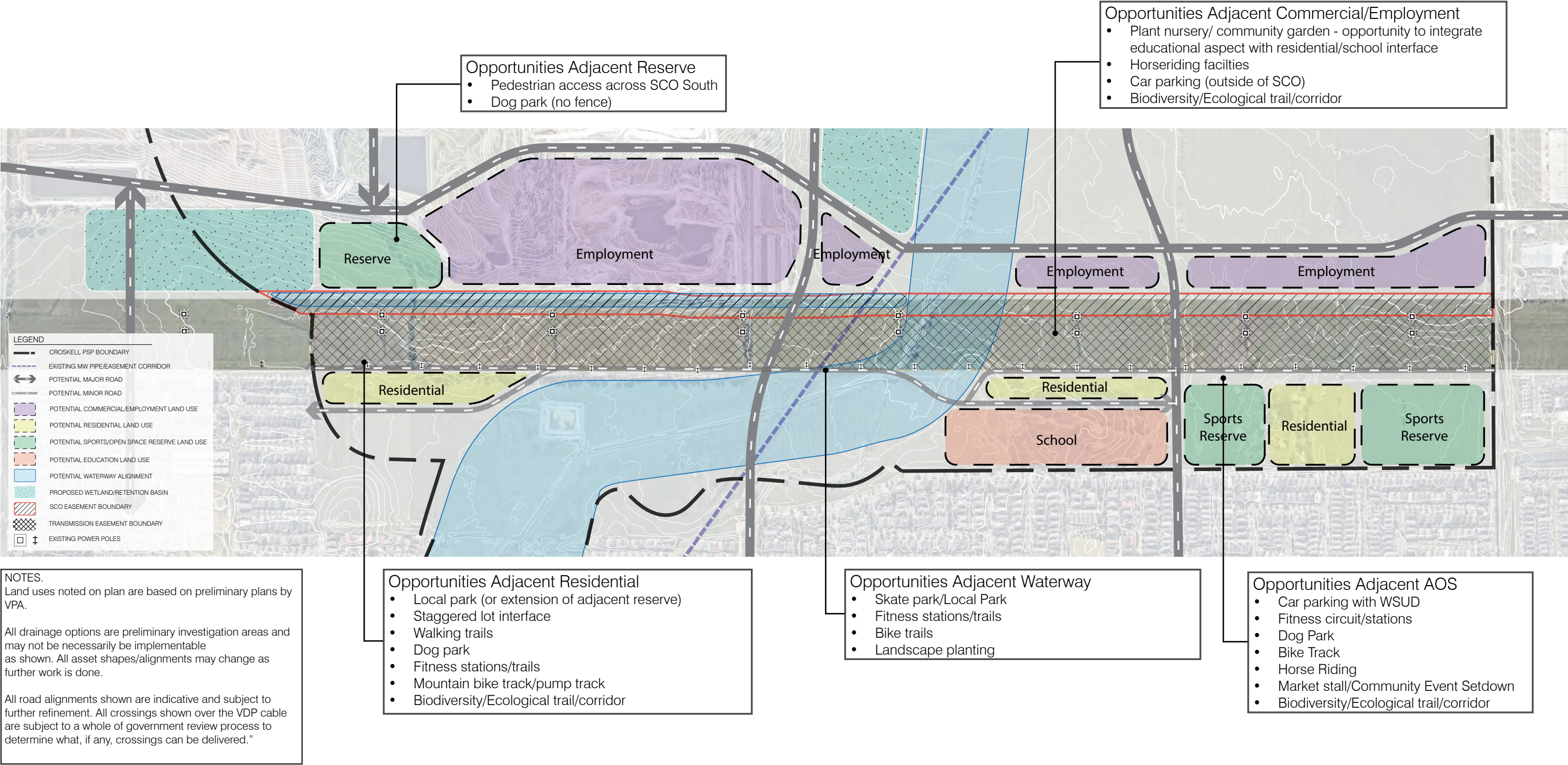
Transmission Easement Concept - Land-use Matrix

General Easement Uses (Southern Frontage)		
ASSOCIATED WITH EMPLOYMENT	COMMERCIAL USES	RECREATIONAL AND COMMUNITY USES
	<ul style="list-style-type: none"><li>Plant Nursery</li><li>Car parking</li><li>Horse Riding Club</li></ul>	<ul style="list-style-type: none"><li>Athletics track</li><li>Local Open Space/Reserve</li><li>Amphitheater</li><li>Markets/community event setdown</li><li>Fitness Circuits</li><li>Interpretive trails (where appropriate)</li><li>Community Gardens</li><li>Dog Parks</li><li>Skate Park</li><li>Pump Track/Bike Track</li><li>Velodrome (topography dependent)</li><li>Associated car parking with above activities - integrate WSUD</li><li>Horse riding</li><li>Biodiversity/Ecological trail/corridor</li></ul>
SCO Easement Uses (Northern Frontage)		
ASSOCIATED WITH EMPLOYMENT	COMMERCIAL USES	RECREATIONAL AND COMMUNITY USES
<ul style="list-style-type: none"><li>Car parking (outside of SCO)</li></ul>	<ul style="list-style-type: none"><li>Car parking (outside of SCO)</li></ul>	<ul style="list-style-type: none"><li>Dog Parks - no fence</li><li>Walking trail - no hardstand</li><li>Path crossing - potential bridge or footpath subject to authority approval</li><li>Fitness Station/Trials (outside of SCO) to support workers</li><li>Biodiversity/Ecological trail/corridor (low maintenance softworks)</li></ul>



# CROSKELL PSP

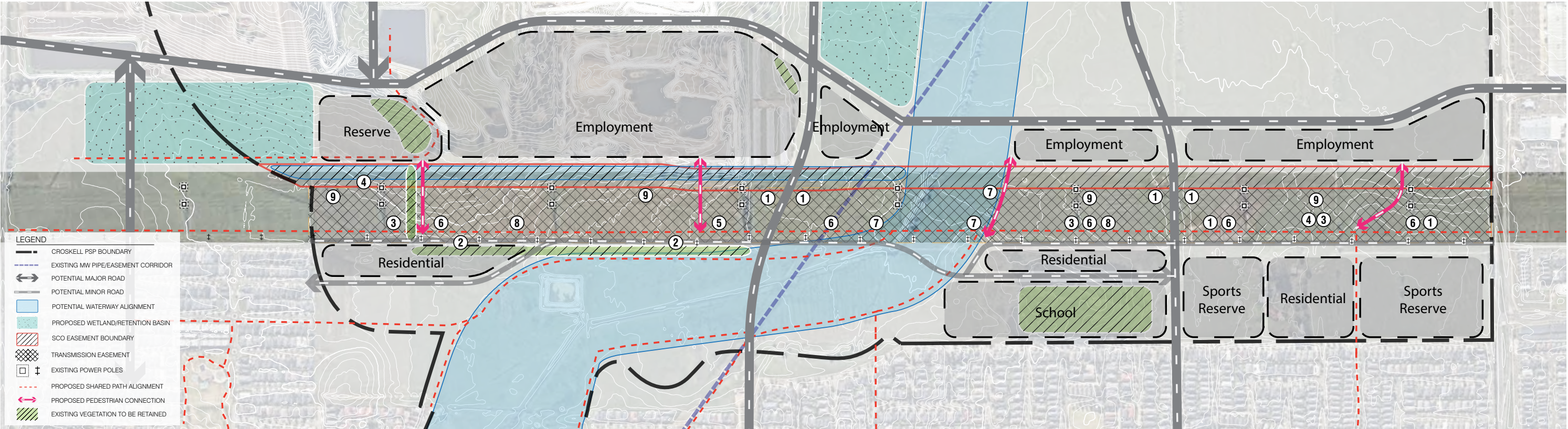
## Transmission Easement Framework





# CROSKELL PSP

## Transmission Easement Concept



NOTES.  
Land uses noted on plan are based on preliminary plans by VPA.

All drainage options are preliminary investigation areas and may not be necessarily be implementable as shown. All asset shapes/alignments may change as further work is done.

All road alignments shown are indicative and subject to further refinement. All crossings shown over the VDP cable are subject to a whole of government review process to determine what, if any, crossings can be delivered."

