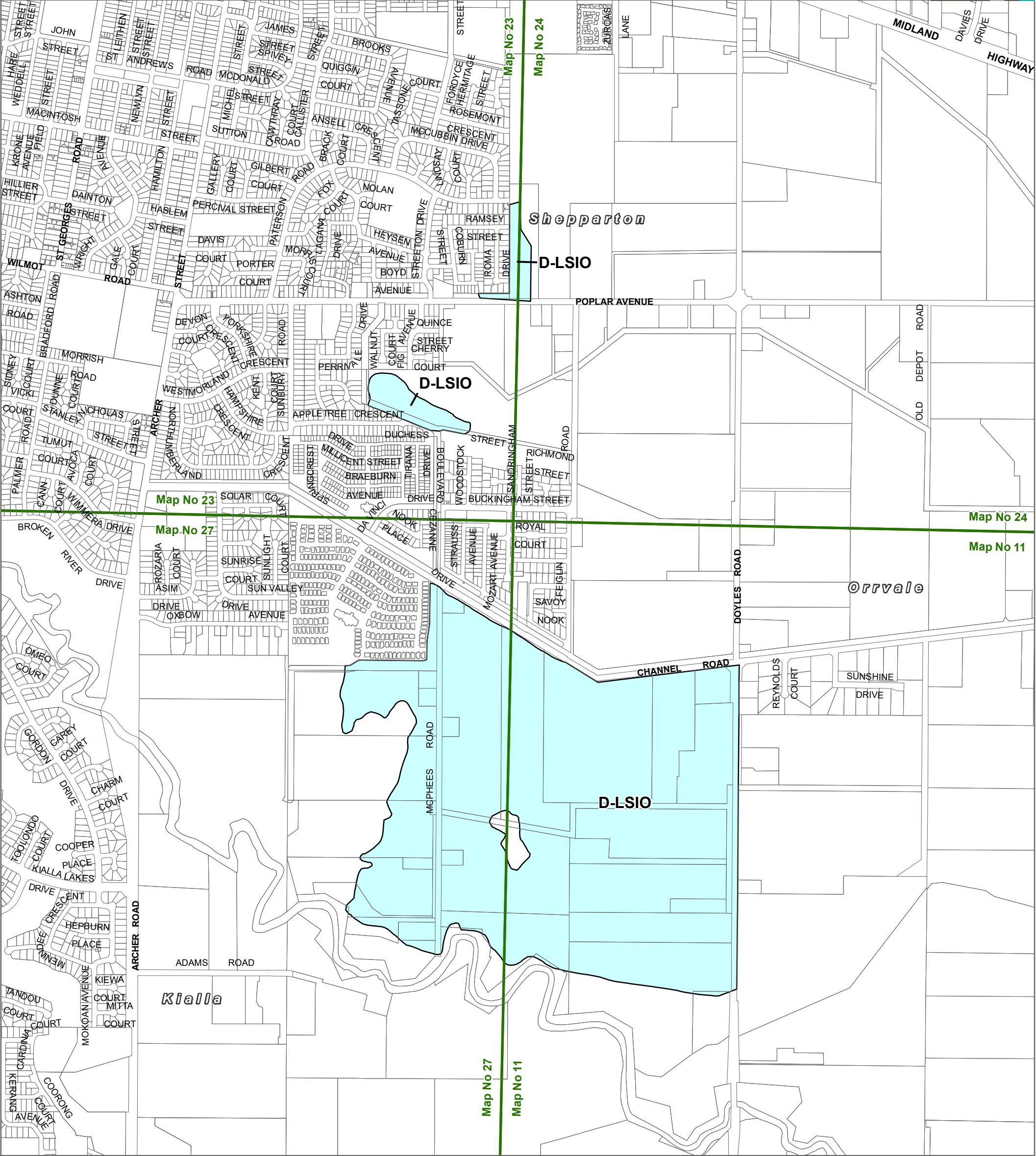
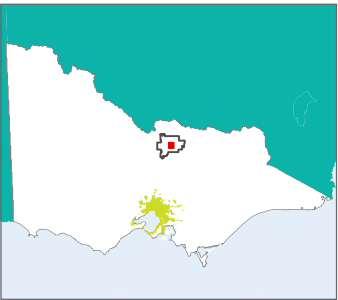


GREATER SHEPPARTON PLANNING SCHEME - LOCAL PROVISION
AMENDMENT C117gshe



LEGEND

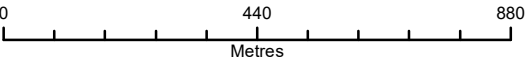
- D-LSIO - Area to be deleted from a Land Subject to Inundation Overlay
- Local Government Area



Part of Planning Scheme Maps 11LSIO-FO, 23LSIO-FO, 24LSIO-FO & 27LSIO-FO

Disclaimer
This publication may be of assistance to you but the State of Victoria and its employees do not guarantee that the publication is without flaw of any kind or is wholly appropriate for your particular purposes and therefore disclaims all liability for any error, loss or other consequence which may arise from you relying on any information in this publication.

Planning Group
Print Date: 21/09/2023
Amendment Version: 4



Department
of Transport
and Planning