

2.2 Topography

The precinct has incredibly flat terrain, with elevations ranging from 115m AHD (eastern boundary) to 113m AHD (western boundary). The catchment falls gently in a south westerly direction towards the Broken River. There are localised raised areas where irrigation supply channels are located. These form barriers to overland flows, which is why the irrigation channels often form the catchment boundaries.

An overview of the topography is presented in Figure 10.

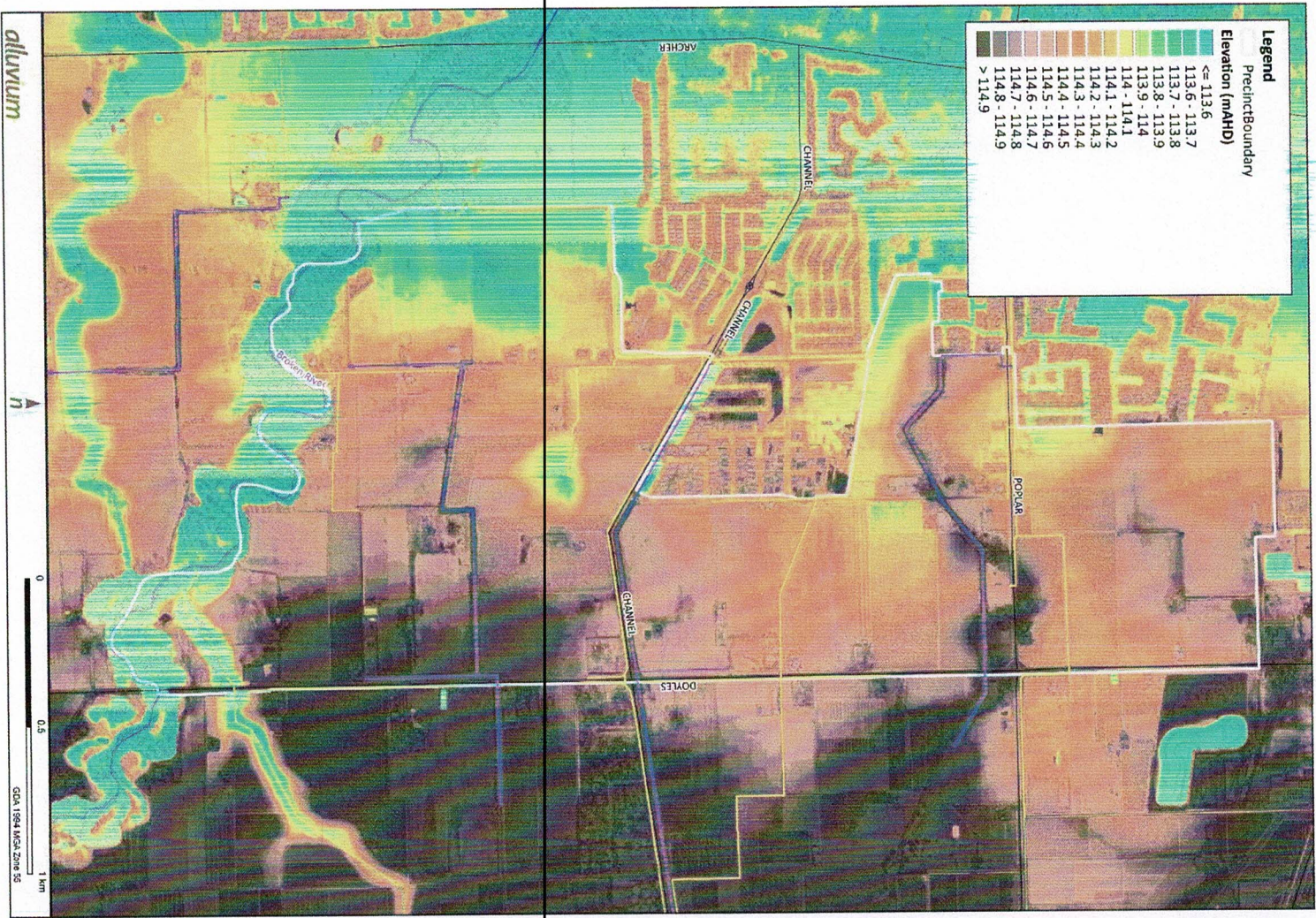
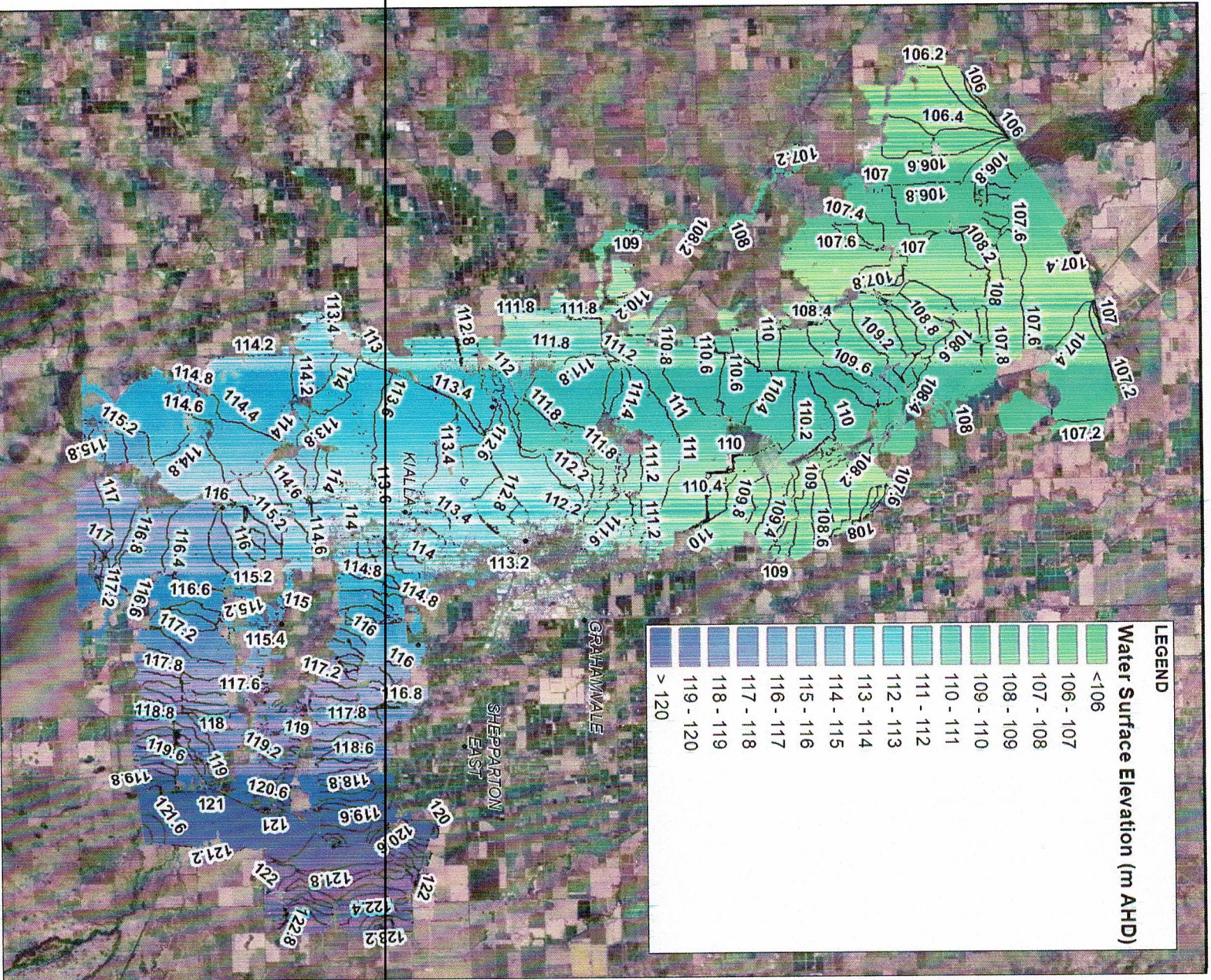


Figure 10. Topography



Data sources: GBCMA
Contours: Vicmap Information @ State of Victoria 2020
Basemap: ESRI Basemap (World Topographic Map)

M:\20010044_Shepparton_Additional_Mapping\Spatial\Workspaces\Level_Comparison_1pc.mxd

2/06/2021

FIGURE 6-4 CLIMATE CHANGE WATER SURFACE ELEVATION