

# Craigieburn West Precinct Structure Plan Post-Contact Heritage Assessment

Client

Victorian Planning Authority

25 January 2019



Ecology and Heritage Partners Pty Ltd

Authors

Michelle Knehans & Giselle Harris, with Emma Russell (History At Work)

## ACKNOWLEDGEMENTS

---

We thank the following organisations for their contribution to the project:

- Victorian Planning Authority for project and site information,
- Hume City Council for providing previous heritage reports;

**Cover Photo:** Dry stone wall and treeline  
(Photo by Ecology and Heritage Partners Pty Ltd)

## DOCUMENT CONTROL

<b>Activity</b>	Post-Contact Heritage Assessment
<b>Address</b>	Craigieburn West Precinct Structure Plan
<b>Project number</b>	11587
<b>Project manager</b>	Michelle Knehans
<b>Report author(s)</b>	Michelle Knehans and Giselle Harris, with Emma Russell – Principal, History At Work
<b>Report reviewer</b>	Oona Nicolson
<b>Mapping</b>	Julian Yuan
<b>File name</b>	11587_EHP_Final_v3_HA_Craigieburn West PSP_24012019
<b>Client</b>	Victorian Planning Authority
<b>Bioregion</b>	Victorian Volcanic Plain
<b>CMA</b>	Port Phillip and Westernport
<b>Council</b>	Hume City Council

Report versions	Comments	Comments updated by	Date submitted
Draft v1	Draft for internal QA review	MK	04/12/2018
Draft v2	Draft to client for comment	MK & GH	06/12/2018
Final	Final report	GH	25/01/2019

### Copyright © Ecology and Heritage Partners Pty Ltd

This document is subject to copyright and may only be used for the purposes for which it was commissioned. The use or copying of this document in whole or part without the permission of Ecology and Heritage Partners Pty Ltd is an infringement of copyright.

### Disclaimer

Although Ecology and Heritage Partners Pty Ltd have taken all the necessary steps to ensure that an accurate document has been prepared, the company accepts no liability for any damages or loss incurred as a result of reliance placed upon the report and its contents.

## ABBREVIATIONS

---

Acronym	Description
Act, the	<i>Heritage Act 2017</i>
AV	Aboriginal Victoria
CHL	Commonwealth Heritage List
CHMP	Cultural Heritage Management Plan
DELWP	Department of Environment, Land, Water and Planning (Victoria)
DoEE	Department of the Environment and Energy (Commonwealth)
EPBC Act	<i>Environment Protection and Biodiversity Conservation Act 1999</i>
HA	Heritage Advisor
PCHA	Post-Contact (Historical) Heritage Assessment
HCC	Hume City Council
HO	Heritage Overlay
HV	Heritage Victoria
NES	National Environmental Significance
NHL	National Heritage List
NTR	National Trust Register (Victoria)
PMST	Protected Matters Search Tool
PSP	Precinct Structure Plan
RNE	Register of the National Estate
SLV	State Library of Victoria
VGf	Victorian Geomorphological Framework
VHI	Victorian Heritage Inventory
VHR	Victorian Heritage Register
VPA	Victorian Planning Authority
VWHI	Victorian War Heritage Inventory
WHL	World Heritage List

# CONTENTS

---

<b>1</b>	<b>INTRODUCTION .....</b>	<b>1</b>
1.1	Project background .....	1
1.2	Name of Heritage Advisors .....	1
1.3	Study area .....	2
1.4	Project context.....	2
1.5	Heritage legislation .....	3
<b>2</b>	<b>ASSESSMENT METHODOLOGY .....</b>	<b>4</b>
2.1	Historical research .....	4
2.2	Field survey .....	4
<b>3</b>	<b>RELEVANT LEGISLATION .....</b>	<b>5</b>
3.1	Heritage Act 2017 .....	5
3.2	Planning and Environment Act 1987.....	5
<b>4</b>	<b>CRAIGIEBURN WEST PSP THEMATIC HISTORY .....</b>	<b>8</b>
4.1	Introduction .....	8
4.2	Methodology.....	8
4.3	Thematic history .....	8
4.4	Themes identified for the Craigieburn West precinct:.....	10
<b>5</b>	<b>PREVIOUSLY IDENTIFIED HISTORICAL HERITAGE PLACES .....</b>	<b>17</b>
5.1	Places subject to statutory heritage controls.....	17
5.2	Previous heritage assessments .....	22
<b>6</b>	<b>HISTORICAL CONTEXT .....</b>	<b>28</b>
6.1	Regional history .....	28
6.2	Review of historical sources.....	28
<b>7</b>	<b>FIELD SURVEY .....</b>	<b>37</b>
7.1	Historical places located within the study area.....	37
7.2	Places of worship within the study area .....	41
7.3	Places adjoining the study area.....	43
<b>8</b>	<b>ASSESSMENT OF SIGNIFICANCE .....</b>	<b>45</b>
8.1	Assessment criteria .....	45

8.2	Significance of places within the study area .....	46
<b>9</b>	<b>RECOMMENDATIONS .....</b>	<b>56</b>
	<b>MAPS .....</b>	<b>60</b>
	<b>APPENDICES .....</b>	<b>67</b>
	<b>REFERENCES .....</b>	<b>75</b>

## Maps

Map 1: Location of Study Area and Previously Identified Historical Heritage Places .....	61
Map 2: Heritage Places and Potential Heritage Places within the Study Area .....	62

## Appendices

Appendix 1: Heritage Legislation .....	68
Appendix 2: Significance Assessment .....	71

# 1 INTRODUCTION

---

## 1.1 Project background

The Victorian Planning Authority (VPA) has commenced a Precinct Structure Planning project for the Craigieburn West precinct in the City of Hume ().

Ecology and Heritage Partners Pty Ltd was commissioned by the VPA to prepare a Post-Contact (Historical) Heritage Assessment (PCHA) for the Craigieburn West Precinct Structure Plan (PSP). The purpose of the PCHA is to identify post contact heritage sites within the study area and the specific elements of value on each site. This information will be used to determine the future land use and help inform future urban development.

The project brief for a PCHA for the Craigieburn West PSP is as follows:

- A search of the Victorian Heritage Register, the Victorian Heritage Inventory, the National Trust Register and local council's heritage overlay and relevant strategies to identify buildings, places or sites of heritage significance within the precinct;
- A review of any previous heritage assessments which are relevant to the PSP area;
- A review of local histories and conduct a search of archival sources (e.g. historic maps and aerial photos), which are relevant to the identification of heritage buildings, sites and places;
- Consider relevant historical management issues in areas adjacent to precinct area which may impact or influence the preparation of the PSP for the study area;
- A thematic history of the study area, from the earliest period of non-indigenous settlement to the present, identifying places or events that are significant to the locality's history;
- A list of known buildings, sites and places of heritage significance within the PSP area and associated historic themes;
- Identification and assessment of significance of areas which may contain potential cultural significance, including places of historical archaeological potential and dry stone walls, associated with non-indigenous heritage, within the PSP area;
- Assessment of the significance of identified heritage elements and provide recommendations as to how these important elements can be managed and/or conserved within an urban area;
- Identification of the heritage values of each site and provide design recommendations to protect each site's heritage values, including key themes for developers to consider in development design and layout.

## 1.2 Name of Heritage Advisors

This report was prepared by Michelle Knehans (Senior Heritage Advisor) and Giselle Harris (Senior Built Heritage Advisor). The Thematic History for the study area was prepared by Emma Russell (Principal, History

At Work). The quality assurance review was undertaken by Oona Nicolson (Director/Principal Heritage Advisor). Mapping was provided by Julian Yuan (GIS Officer).

### 1.3 Study area

The Craigieburn West precinct (the study area) is located within the northern growth corridor and covers an area of approximately 564 hectares. The precinct is located approximately 30 km north-west of Melbourne's CBD, and 4 km west of Craigieburn central. The Craigieburn West PSP is located at the edge of Melbourne's Urban Growth Boundary. Development of land within the PSP will complete the Craigieburn growth front and complement existing surrounding development through the provision of residential, recreation, community and employment opportunities (VPA).

The study area is generally bounded by Mount Ridley Road to the north, Mickleham Road to the west, Whites Lane, individual property boundaries and existing residential subdivision to the east, and residential subdivision and Greenvale Reservoir to the south (Map 1).

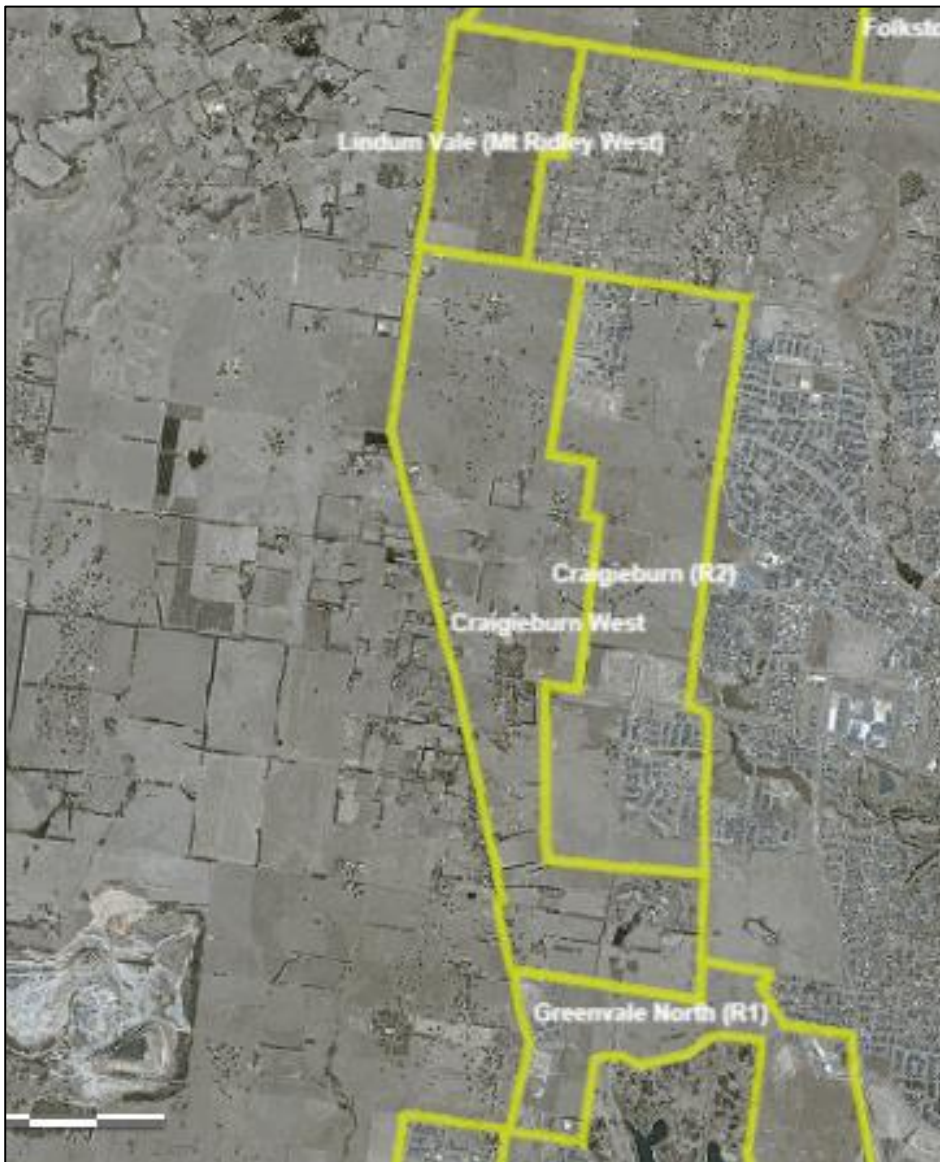
The study area comprises the following properties:

- Nos. 1240, 1290, 1300, 1320, 1340, 1360, 1370, 1390, 1430, 1480, 1520, 1530, 1540, 1550, 1570, 1600, 1630, 1660, 1690, 1720, 1760, 1780, 1800 & 1880 Mickleham Road;
- No. 685 Mount Ridley Road;
- Nos. 220, 225, 250 & 290 Olivers Road;
- Nos. 75 & 125 Whites Lane;
- Nos. 640, 665, 680-690 & 700 Craigieburn Road;
- No. 20 Dunhelen Lane; and
- Nos. 1170A (part), 1170G, 1170H and 1170J Mickleham Road, Greenvale.

### 1.4 Project context

Within the City of Hume, growth area planning addresses the development of Greenfield areas (i.e. previously undeveloped farming land) on the outskirts of the municipality's urban areas, to provide a land use and planning solution to population growth. Precinct Structure Plans, with Development Contributions Plans, guide the direction of land uses and infrastructure required in these areas as a result of the transition of land from farming to urban use. Precinct Structure Plans provide a framework for the development of land for urban use, including road layouts, residential areas, public open space and transport, as well as the provision of community services including schools, employment, shopping centres etc. (Hume City Council).

The Craigieburn West precinct is bounded by several gazetted Precinct Structure Plans, including Lindum Vale (Mt Ridley West) to the north, Craigieburn (R2) to the east and Greenvale North (R1) PSP to the south (refer Figure 1).



**Figure 1:** Craigieburn West PSP study area (in centre of image) with adjoining PSP areas – Lindum Vale (Mt Ridley West) to the north, Craigieburn (R2) to the east and Greenvale North (R1) to the south (Source: Victorian Planning Authority)

## 1.5 Heritage legislation

Historical heritage places in Victoria are protected by Commonwealth and State legislation, including the Commonwealth *Environment Protection and Biodiversity Conservation Act 1999* (EPBC Act) and the Victorian *Heritage Act 2017* and *Planning and Environment Act 1987*. An overview of this legislation is provided at Section 3 of this report.

## 2 ASSESSMENT METHODOLOGY

---

This assessment was undertaken through a desktop study of the study area, utilising historical research to inform a thematic history for the area, as well as a field survey of the study area. The assessment identified known places of heritage significance, as well as places and/or archaeological sites of potential heritage significance.

### 2.1 Historical research

Historical research using primary and secondary sources has formed the basis upon which the historical (post-contact) development of the study area has been assessed.

This assessment has been informed by the following primary sources:

- Maps collection, State Library of Victoria;
- Land Victoria historic aerial photography;
- Nearmap aerial photography;
- Photographic collection, State Library of Victoria; and
- Trove digitised newspapers, National Library of Australia.

Additional research was also undertaken using secondary sources and online databases as follows:

- Victorian Heritage Database;
- Australian Heritage Database;
- National Trust Register;
- Municipal heritage studies;
- Precinct Structure Plans;
- Published histories; and
- Historical societies, including the Craigieburn Historical Interest Group Inc.

### 2.2 Field survey

A visual inspection of targeted parts of the study area was undertaken on 19 and 28 November 2018. This inspection initially focussed on known heritage places (i.e. those subject to statutory heritage controls – refer Section 5 of this report), but also investigated places/elements identified through historical research and during the initial field survey.

## 3 RELEVANT LEGISLATION

---

In Victoria, places and objects of cultural heritage significance are protected and managed through several statutory mechanisms. The following legislation and local policy applies to post-contact heritage in the Craigieburn West study area:

### 3.1 Heritage Act 2017

The *Heritage Act 2017* regulates the Victorian Heritage Register (VHR) and the Victorian Heritage Inventory (VHI). Both are administered by Heritage Victoria and primarily intended to protect places and sites of non-Indigenous or 'post-contact' heritage.

The VHR provides a listing of places or objects, including buildings, structures and areas/precincts which have been assessed as being of Cultural Heritage Significance to the State of Victoria using assessment criteria established by the Heritage Council. The VHI lists all known archaeological sites and offers blanket protection to all other archaeological sites over 75 years of age, irrespective of whether they are listed on the VHI or not. A permit is required for works associated with a registered place or object, and a Consent is required for any works or activities associated with an archaeological site.

### 3.2 Planning and Environment Act 1987

Places with a local threshold of heritage significance can be protected by inclusion in the Schedule to the Heritage Overlay (HO) of local government planning schemes under the *Planning and Environment Act 1987*. At Clause 43.01 of all Victorian Planning Schemes, a State provision stipulates that it is the purpose of the Heritage Overlay:

- To implement the Municipal Planning Strategy and the Planning Policy Framework.
- To conserve and enhance heritage places of natural or cultural significance.
- To conserve and enhance those elements which contribute to the significance of heritage places.
- To ensure that development does not adversely affect the significance of heritage places.
- To conserve specified heritage places by allowing a use that would otherwise be prohibited if this will demonstrably assist with the conservation of the significance of the heritage place.

The Craigieburn West PSP study area is located within the City of Hume. The Hume Planning Scheme State Planning Policy Framework (SPPF) addresses 'Heritage Conservation' at Clause 15.03-1S, which has as its objective:

- To ensure the conservation of places of heritage significance.

The strategies identified to achieve this objective are as follows:

- Identify, assess and document places of natural and cultural heritage significance as a basis for their inclusion in the planning scheme.

- Provide for the protection of natural heritage sites and man-made resources.
- Provide for the conservation and enhancement of those places that are of aesthetic, archaeological, architectural, cultural, scientific or social significance.
- Encourage appropriate development that respects places with identified heritage values.
- Retain those elements that contribute to the importance of the heritage place.
- Encourage the conservation and restoration of contributory elements of a heritage place.
- Ensure an appropriate setting and context for heritage places is maintained or enhanced.
- Support adaptive reuse of heritage buildings where their use has become redundant.
- Consider whether it is appropriate to require the restoration or reconstruction of a heritage building in a Heritage Overlay that has been unlawfully or unintentionally demolished in order to retain or interpret the cultural heritage significance of the building, streetscape or area.

The relevant local policy to support the SPPF is found at Clause 21.04 –‘Built Environment and Heritage’. Cultural heritage in Hume is described at Clause 21.04-4 as follows:

*Hume has a rich and very diverse cultural heritage that includes ceremonial rings, middens, scar trees, heritage bridges, ruins of bluestone cottages and flour mills, pastoral homesteads, the former Industrial School and Asylum, Emu Bottom Homestead, Rupertswood Mansion, wineries, sites reputedly associated with early explorers, and sites associated with community events of State and national significance. This heritage is integral to Hume’s identity and constitutes a significant tourism and education resource.*

*A large number of Hume’s heritage places are of regional and State significance and any development within these places must ensure the conservation and protection of these heritage buildings and places.*

Key issues associated with the municipalities local heritage are identified as:

- Protecting significant heritage places in areas of growth.
- Incorporating heritage assets into development in a way that optimises their long-term protection and conservation.

Objective 13 of this Local Planning Policy Framework is:

- To identify, recognise and protect places of heritage, cultural and social significance.

Strategies to achieve this objective are identified as follows:

*13.1 Recognise the importance of the City’s heritage assets.*

*13.2 Ensure that new subdivisions do not compromise identified heritage values.*

*13.3 Ensure that the productive use of non-urban land does not compromise identified heritage values.*

*13.4 Ensure that new growth areas protect, and where possible integrate heritage sites into the design of subdivisions, particularly open space areas.*

*13.5 Encourage heritage buildings and places to be incorporated into new development in a manner that optimises their adaptive reuse where appropriate.*

*13.6 Ensure development maintains the visual prominence of historic buildings and local landmarks.*

*13.7 Ensure that additions, alterations and replacement buildings are sympathetic to the heritage place and surrounds.*

*13.8 Ensure that the use and development of heritage places and adjoining land is compatible with and does not adversely affect the significance of the place.*

Also included in the Hume Planning Scheme is the Particular Provision at Clause 52.33 'Post Boxes and Dry Stone Walls', the purpose of which is to conserve historic post boxes and dry stone walls.

This provision establishes the requirement for a permit to demolish, remove or alter a dry stone wall constructed before 1940 on land specified in the schedule to this provision. It is noted however that at present, no land within the municipality is specified in the schedule to Clause 52.33. The permit requirements identified in relation to dry stone walls at this provision do not currently apply within the City of Hume.

## 4 CRAIGIEBURN WEST PSP THEMATIC HISTORY

---

The following thematic history for the Craigieburn West precinct study area was prepared by Emma Russell – Principal, History At Work.

### 4.1 Introduction

As part of this study History At Work was engaged by Ecology and Heritage Partners Pty Ltd to conduct a post-contact thematic history of the area from the earliest period of non-indigenous settlement to the present.

Thematic histories are not chronological and do not include a detailed exploration of individuals, groups or events that have been part of the places' history. Before 2010 thematic histories addressed the physical development of a place by isolating and explaining aspects critical to understanding the environmental, cultural, natural and built expressions found in study areas across Victoria. Since 2010 thematic histories in Victoria have been modelled on the framework espoused in Victoria's Framework of Historical Themes published by the Heritage Council of Victoria in 2010.

The purpose of the thematic history is to identify patterns and themes since the time of first non-Indigenous settlement, and to illustrate the way in which these themes have shaped the precinct's environment and culture today. It will provide the context for places within the precinct that have already been identified in previous studies and recognised on statutory lists, as well as for places identified in this heritage assessment and in the future.

### 4.2 Methodology

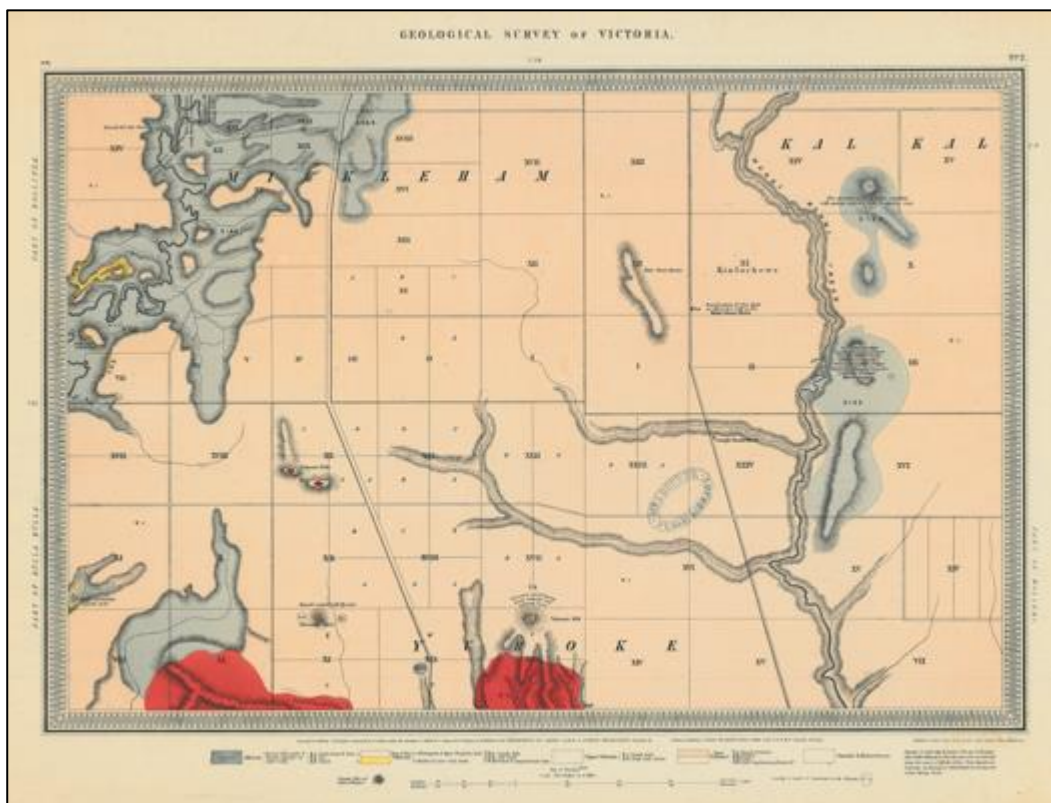
This thematic history work on the Craigieburn West precinct involved two site visits, and was otherwise largely a desktop study that relies heavily for its understanding of the area on the work produced in 1998 by David Moloney for the City of Hume Heritage Study: former Shire of Bulla District; and in 2000 by Olwen Ford and Gary Vines for the Hume Heritage Study: Broadmeadows area and environs. It partially relies on the Heritage Overlay Review, Hume City Council, Victoria prepared by Gary Vine and Kym Oataway in 2017, and a range of other published and unpublished sources were also useful. The themes identified in this history that contribute to the cultural, built and environmental expressions in Craigieburn West today have been developed from Victoria's Framework of Historical Themes.

### 4.3 Thematic history

#### 4.3.1 Summary

Prior to the arrival of European people in 1836 the cultural history of the area was Wurundjeri. The Wurundjeri people had been living here and across a large territory for many thousands of years. There were hills, creeks and grasslands aplenty with a variety of birds and animals. Kangaroos are still a daily presence in the area today, with a mob of kangaroos present in the study area during one of our site visits.

The geological history of the area has resulted in rich volcanic soil and basalt rocks strewn across the wider area. A Geological Survey of Victoria map published in 1846 identifies the location of four volcanic hills and points of eruption very close to Craigieburn West.<sup>1</sup> In the volcanic hills and points of eruption are identified towards the south-west corner of the map as small red marks surrounded by a circle of black markings.



**Figure 2:** Parts of parishes of Bolinda, Mickleham, Kalkallo, Wollert, Yuroke, Bulla Bulla surveyed in 1846 by C.D.H. Aplin, Geological Survey Office, Melbourne, 1860. (Source: State Library of Victoria Maps Collection)

In its most recent historical era – the post-contact era – the Craigieburn West location (PSP 1068) has a history that is essentially dairying and agricultural. This history is most obviously expressed today through the presence of post and rail fences, dams, tree lines, large paddocks and the wide-open spaces still visible to the north and west of the study area. In addition to this agricultural landscape are several expressions of cultural activity that have evolved in recent decades as religious communities have sought to purchase land and establish themselves in places that are affordable and large enough to accommodate their needs and those of their members.

<sup>1</sup> *Parts of parishes of Bolinda, Mickleham, Kalkallo, Wollert, Yuroke, Bulla Bulla surveyed in 1846 by C.D.H. Aplin, Geological Survey Office, Melbourne, 1860*



**Figure 3:** Craigieburn West agricultural landscape



**Figure 4:** Reclining Buddha statue on the periphery of the Buddhist Temple Daham Niketanaya at 1690 Mickleham Road, Mickleham

## 4.4 Themes identified for the Craigieburn West precinct:

### 4.4.1 Theme: Shaping Victorias environment – living with the landform and geology

#### *a. Volcanic plains – associated rock debris used to create stone walls and identify boundaries*

The study area sits within a volcanic plain, identified in 1846 in a geological survey and shown in the map above. In fact there were four volcanic hills and points of eruption in the nearby vicinity and these would have been responsible for the basalt stone strewn across the study area. In the nineteenth century such stones were frequently used to create dry stone walls as boundaries and to enclose areas. These were usually constructed by professional stonemasons or at least by people who were familiar with the techniques required. Stone walls were commonly built in Scotland, Ireland, England and Wales and some pre- and post-

gold rush migrants to the Hume area may have had the skills to construct such walls but there is little evidence of sophisticated or knowledgeable dry stone walling in the study area. Instead, remnant walls and the occasional enclosure such as animal pens or dams make it likely that the farmers themselves or their labourers or field hands may have been responsible for their construction.



**Figure 5:** Remnant dry stone wall

#### 4.4.2 Theme: Peopling Victoria's places and landscapes

##### *a. Indigenous lives in the area pre-contact*

The Wurundjeri Aboriginal people had a large territory that stretched across the northern region of present day Melbourne from beyond Bacchus Marsh in the west to the Yarra Ranges in the east, with the study area near the middle of their territory. There are some very significant Aboriginal sites located in Hume City but they tend to be towards the west in and around Sunbury and, to date, little archaeological evidence of significance has been found within the study area.

##### *b. Exploring*

Hamilton Hume and William Hovell first came through the area in 1824. Hovell described the view from around Kalkallo, north-east of Craigieburn, to the south towards the bay as '...plains, and open forest, which served to give them a more beautiful appearance...never did I behold a more charming and gratifying sight...' <sup>2</sup> Hume and Hovell's report on their inland expedition inspired John Batman to request permission to move across Bass Strait from Tasmania. Governor Richard Bourke of NSW refused permission but within a few years the shortage of pastureland in Tasmania meant Batman was prepared to ignore the Governor. <sup>3</sup>

<sup>2</sup> D Maloney, *City of Hume Heritage Study: Former Shire of Bulla District*, 1998, vol. 2, p.10

<sup>3</sup> *ibid*, p. 6

In May 1835 Batman made his fateful visit to Port Phillip, at which he negotiated a 'treaty' with the local indigenous inhabitants and set in place the European occupation of this area. At one point in his exploration he wrote of '...very rich black soil with grass up to our middle and as thick as it would stand... this land I think was richer than any high land I have seen before...'<sup>4</sup> According to Maloney the location Batman was referring to in his journal may have been the Greenvale-Craigieburn area, including today's Craigieburn West, or it may have been the Tullamarine-Westmeadows area.

*c. Settling and making a living*

Hume, Hovell and Batman were soon followed by the pastoralists of the 1830s and 1840s, who brought their sheep with them to graze on the open grasslands. James Malcolm was one of the first to arrive and he settled in nearby Kinlochewe and built his homestead Olrig (HO33). John Sinclair settled at Mount Ridley and the Brodie brothers, Richard and George, became early settlers and large landowners in the Mickleham and surrounding districts and built Dunhelen House and Barn (HO31) at 1240 Mickleham Road, Greenvale in 1860. Although there is little evidence of sophisticated dry stone walling in the area the Dunhelen barn was classified by the National Trust in 1968 and recognised in the 1998 Heritage Study for its 'exceptionally fine example of stonemasonry'.<sup>5</sup>

The 1863 Shire of Broadmeadows Rate Book showed that in Mickleham thirty-four people owned a farm and land, while ten leased a farm and land, or a property with land such as a house or a hotel.<sup>6</sup> By 1868 the Mickleham area had attracted David Manson the Common School Teacher, two postmasters, a stonemason, a publican, a labourer, two schoolmasters, two gardeners, a shepherd, two blacksmiths, five dairy farmers and 23 farmers.<sup>7</sup> Mickleham had become a village towards the north of the study area, near and around the Mickleham Road and Mt Ridley Road intersection. Yet it never grew any bigger and eventually those who were not farmers moved away, maybe to the nearby Craigieburn township that serviced the increasingly busy Hume Highway or to seek opportunities in the city of Melbourne or further afield, as was the case across rural Victoria particularly in the latter half of the twentieth century.

A 1938 Ordinance Survey map indicates two post and telegraph offices in the area, one in Mickleham and one in Yuroke to the south. By 1951 aerial images taken both north and south of Craigieburn Road indicate very little had changed since 1938 with the area consisting entirely of open paddocks dotted with clumps of trees, two or three dams and a few roads and buildings. The Victorian Municipal Directory consistently describes Mickleham as an 'agricultural and dairying district' from 1900 to 1980 and that description is apt today.

---

<sup>4</sup> *ibid*, p.7

<sup>5</sup> D Maloney, *City of Hume Heritage Study: Former Shire of Bulla District*, 1988, vol. 2, p.Y/04 1

<sup>6</sup> Craigieburn Historical Interest Group, *A list of Mickleham rate payers in 1863*, viewed 27 November 2018, < <http://chig.asn.au/a-list-of-mickleham-rate-payers-in-1863/>>

<sup>7</sup> Craigieburn Historical Interest Group, *Directory of Mickleham in 1868*, viewed 27 November 2018, < <http://chig.asn.au/1868-directory/>>



**Figure 6:** (Left) 1938 Sunbury Ordinance map, (Right) 1951 aerial image north of Craigieburn Road (Source: State Library of Victoria Maps Collection and Land Victoria Historic Aerial Photos)

*d. Settling to establish or service communities*

In the latter decades of the twentieth century this rurality began to attract another type of settler as communities sought land that was affordable and yet able to accommodate institutions important to their religious activities. In the 1980s the Tibetan Buddhist Society bought land at 1425 Mickleham Road, Yuroke. They transformed the land from ‘bumpy, rocky paddocks’ to beautiful rose gardens, lawns and treed areas and built enough accommodation for a small Buddhist religious community and visitors, and a temple that, in 2002, was blessed by the Dalai Lama himself.<sup>8</sup> Although this is outside the study area it is directly across the road from it. In 1998 the Buddhist Temple Daham Niketanaya was established at 1690 Mickleham Road, Mickleham, inside the study area, and is home to three monks. Quite different from the Tibetan temple this one is representative of the Buddhism found in south Asia. There are a number of life size statues in the grounds dedicated by followers in the name of a loved one, and several statues of Buddha.

The population in Craigieburn who identified as having Indian ancestry increased from 6.7% (2,186) in 2011 to 12.9% (6,487) in 2016, the third largest ancestral group after Australian and English, while those who are Sinhalese increased from 3.6% (1,186) to 3.9% (1,954). In addition to the Buddhist Temple the St Thomas Jacobite Syrian Orthodox Church in Whites Lane off Craigieburn Road serves an Assyrian / Chaldean community in Craigieburn that has increased from 2.3% (757) in 2011 to 5.1% (2,573) in 2016.<sup>9</sup> Similarly, the Islamic community in Craigieburn has increased from 9.9% (3,230) who identified as being Islamic in 2011 to 11.9% (5,976) in 2016. At 1550 Mickleham Road, Mickleham there is a house and adjacent block of land identified as belonging to the Australian Islamic Association. Elsewhere in the Craigieburn area is the Islamic Sciences & Research Academy of Australia.

<sup>8</sup> .id.com, *Craigieburn Religion*, Hume City Council, accessed 4 December 2017, < <https://profile.id.com.au/hume/religion?WebID=150>>

<sup>9</sup> .id.com, *Craigieburn Ancestry*, Hume City Council, accessed 3 December 2017, < <https://profile.id.com.au/hume/ancestry?WebID=150>>



**Figure 7:** (Left) Reclining Buddha, Buddhist Temple Daham Niketanaya, 1690 Mickleham Road, Mickleham, (Right) St Thomas Jacobite Syrian Orthodox Church, Whites Lane, Mickleham

#### 4.4.2.1 Places of significance to 'Peopling Victoria's places and landscapes' that are in the study area include:

- 19th century places include:
  - the State School No. 1051, (HO35) at 1880 Mickleham Road, Mickleham; and
  - Dunhelen House and Barn (HO31) at 1240 Mickleham Road, Greenvale.
- 20th and 21st century places include:
  - the Buddhist Temple Daham Niketanaya at 1690 Mickleham Road, Mickleham; and
  - the St Thomas Jacobite Syrian Orthodox Church at Whites Lane in Mickleham.

#### 4.4.3 Theme: Transforming land and natural resources

##### a. Capturing and storing water

When Hume and Hovell came through the region they noted 'areas of stony ground, and noticed the earth was parched and cracked due to the drought'.<sup>10</sup> Droughts are a perennial challenge in Australia and people have long found ways of making the most of whatever water may be available in times of drought. There were watercourses through the study area – Aitken Creek, named after one of Craigieburn's earliest settlers, travels into the study area from the east and towards both Yuroke in the south and Mickleham in the north. There are several water holes, or depressions in the ground, able to capture the water along the length of the creek. These were noted in the 1938 Victoria Ordnance Survey map, as were several windpumps used to pump water from the ground and built across the study area from Risborough Park in the northern end to Brindley Park in the south. Dams were another source that provided water for stock.

##### b. Marking borders and pathways

In the relatively flat landscape of the study area, treelines are prominent and can be seen throughout. They were planted along borders, such as around paddocks or the boundaries of farms, and to mark driveways.

<sup>10</sup> D Maloney, *City of Hume Heritage Study: Former Shire of Bulla District*, 1998, vol. 2, p.6

Examples of these include the driveway to Dunhelen and the driveway to the St Thomas Jacobite Syrian Orthodox Church. Drystone walls, although unsophisticated in their construction, are nonetheless evident as markers and boundaries for feed enclosures, lining dams, and marking paddocks.

c. Farming

Sheep and cattle farming was the most common activity in the study area from the time shortly after the first European people came through. Evidence of farming can be found across the study area such as the remnant post and wire fencing at 1340 Mickleham Road and many other examples throughout the study area. The Victorian Municipal Directory has consistently described Mickleham as an 'agricultural and dairying district' through to at least the 1980s.



**Figure 8:** (Left) The Syrian Orthodox Church driveway, (Right) A new steel fence and traditional treeline border near Dunhelen

**4.4.3.1 Places of significance to 'Transforming land and natural resources' that are in the study area include:**

- 19th century places include the Dunhelen House and Barn at 1240 Mickleham Road, Greenvale.
- 20th and 21st century places include post and wire fencing.

**4.4.4 Theme: Building towns and community life**

a. Nineteenth century periphery of Craigieburn

As a nineteenth century pastoral community the village of Mickleham developed around the intersection between Mickleham Road and Mt Ridley Road. The rate book and residents lists for Mickleham in the 1860s indicate a thriving village that included a school, service centres such as a post office and craftspeople such as blacksmiths, as well as farmers. Mickleham Road was an important route north from Melbourne in the mid nineteenth century until what became the Hume Highway became more frequently used. The village of Mickleham benefited from this as a service centre along the route. In later decades and during the early years of the twentieth century the township of Craigieburn developed alongside the Hume Highway and Mickleham became a peripheral location that was predominantly given over to farming. In the 1998 heritage study

Maloney has described Mickleham as ‘a tiny, quintessentially Australian country settlement’ that still includes a former church building, a school, war memorial and former hotel/blacksmith/post-office.<sup>11</sup>

b. Commemorating

Both the Mickleham War Memorial on Mickleham Road, Mickleham (HO37) and the Mickleham Avenue of Honour along Mount Ridley and Mickleham Roads are listed on the Victorian War Heritage Inventory. They are adjacent to the study area and were built and planted by the Mickleham community to commemorate local participation in World War 1. Later, after World War 2, locals who had served had their names added to the memorial.

c. Late 20th century and 21st century community institutions

The Buddhist Temple Daham Niketanaya at 1690 Mickleham Road, St Thomas Jacobite Syrian Orthodox Church at 75 Whites Lane, and the Islamic Community Milli Gorus Craigieburn Inc at 1550 Mickleham Road have all developed as significant community institutions providing spiritual and cultural care and teachings for a growing number of Buddhist, Muslim and Asian people living in the Craigieburn area in recent years. The Mickleham Community Centre & Tennis Courts, 685 Mt Ridley Rd, Mickleham is another example of a community institution of local significance to the population.

**4.4.4.1 Places of significance to ‘Building towns and community life’ that are in the study area include:**

- 19th century places include the State School No. 1051, (HO35) at 1880 Mickleham Road, Mickleham.
- 20th and 21st century places include:
  - the War Memorial and Avenue of Honour;
  - the Mickleham Community Centre & Tennis Courts, 685 Mt Ridley Rd, Mickleham;
  - the Buddhist Temple Daham Niketanaya at 1690 Mickleham Road, Mickleham;
  - the St Thomas Jacobite Syrian Orthodox Church at Whites Lane; and
  - the Islamic Community Milli Gorus Craigieburn Inc at 1550 Mickleham Road.

---

<sup>11</sup> D Maloney, *City of Hume Heritage Study: Former Shire of Bulla District*, 1998, vol. 3, CL6-1

## 5 PREVIOUSLY IDENTIFIED HISTORICAL HERITAGE PLACES

---

### 5.1 Places subject to statutory heritage controls

A review of the various relevant databases was conducted and as a result two historical places subject to statutory heritage controls were identified within the study area. An additional three historical heritage places were identified immediately adjoining the study area. The database review is discussed below in relation to the study area and surrounding region.

#### 5.1.1 Victorian Heritage Register

The Victorian Heritage Register (VHR) lists and provides legal protection, under the Victorian *Heritage Act 2017*, for heritage places, objects and historic shipwrecks of significance to the State of Victoria.

There are no heritage places included on the VHR within the study area (Map 1).

#### 5.1.2 Victorian Heritage Inventory

The Victorian Heritage Inventory (VHI) is a list of all known historical (non-Indigenous) archaeological sites in Victoria. The *Heritage Act 2017* protects all historical archaeological sites in Victoria. Places listed on the VHI are not typically of State significance but may be of regional or local significance.

There are no historical archaeological sites included on the VHI within the study area (Map 1).

There is one site included on the VHI which immediately adjoins the north-east boundary of the study area (Sidebottom Homestead Site – H7822-0834). This site is outside of the PSP boundary and is likely to have been impacted by recent residential development in this location.

#### 5.1.3 City of Hume Heritage Overlay

The study area is located within the City of Hume and is governed by the Hume Planning Scheme. Planning schemes set out policies, provisions and overlays to guide and manage the use, development and protection of land. Heritage places which are of local or regional significance are identified within the planning scheme and protected through the Heritage Overlay (HO).

There are two places included in the Schedule to the Heritage Overlay of the Hume Planning Scheme within the study area (Map 1). These places are:

- HO35 – State School No. 1051, 1880 Mickleham Road, Mickleham, and
- HO31 – Dunhelen House & Barn, 1240 Mickleham Road, Greenvale.

##### 5.1.3.1 HO35 – State School No. 1051

The Mickleham School No. 1051 was identified in the *City of Hume Heritage Study: Former Shire of Bulla District*, prepared by David Moloney and Vicki Johnson in 1998, as a site of local significance. The statement of significance for HO35 included in the *City of Hume Heritage Study: Former Shire of Bulla District* is as follows:

*Constructed in 1871, the former schoolroom of Common School No.1051, Mickleham, is of Local significance for its long-term historical and social associations with the early establishment of a pastoral community in the Mickleham area, and with the establishment of private educational facilities by that community in 1855.*

*As a substantially intact example of the small one room schoolhouse erected under the control of the Board of Education, it is representative of these modest structures, which were typically erected in rural communities. Architecturally it demonstrates the restrained and classically inspired detailing typical for this size of building, and displays a characteristic use of locally quarried bluestone in its construction; the loss of the external chimney in the 1980s, and the replacement of the original bluestone porch with a brick structure in the late 1920s detract somewhat from its overall appearance.*

*The building is notable for its continuing use as part of the present school, and for its contribution to the streetscape, which includes other significant structures; it plays a key part in the interpretation of the history of Mickleham township.*

#### **5.1.3.2 HO31 – Dunhelen House and Barn**

Dunhelen was identified as a place of State significance in the *City of Hume Heritage Study: Former Shire of Bulla District*. The statement of significance for HO31 included in the *City of Hume Heritage Study: Former Shire of Bulla District* is as follows:

*The Dunhelen homestead and woolshed/barn are of State architectural and historical significance: as a large, distinctive, and substantially intact bluestone and granite nineteenth century Italianate dwelling; for its early and historically important masonry barn/woolshed, which is also an exceptionally fine example of stonemasonry; and as an early nineteenth century pastoral property first established by the Brodie brothers, who were Port Phillip pioneers and major local landowners.*

*The rear part of the homestead appears to have been erected in the early years of the property's establishment while the front part of the homestead and the barn were erected in about the 1870s or early 1880s by the second owners of the property. The structures sequentially show the early establishment and subsequent consolidation of the property as a large grazing concern.*

*Architecturally, the main front portion of the homestead with its Victorian Italianate styling exemplifies a style rarely found in rural dwellings and more likely to be found in Melbourne and larger provincial towns. The building is remarkably intact and retains the striking form of the original design as well as the important decorative details such as the delicate iron lacework to the verandah.*

*Although the woolshed/barn was burnt out in 1968 and the roof and support structure were replaced, the masonry building form is otherwise as original. In its overall layout, appearance and size it is one of the most unusual and distinctive vernacular farming structures to be found in the State. The stonemasonry in both buildings is also of note especially for the combination of quarried bluestone for the main walls and the selective use of quarried granite as a contrasting decorative element. As the initial purpose of the building seems to have been as a woolstore, it is thus of special interest as a distinctive example of an emerging Australian building type. The shearing/woolshed is a highly important building type in Australia, both historically and aesthetically.*

*Historically the early construction of the rear part of the homestead as the main dwelling for the Dunhelen property and the continuous use of the original name retains an important link with the original owners of the property, Richard Sinclair Brodie and George Sinclair Brodie. The name of the property would have been chosen to commemorate both their Scottish heritage, and Helen, their mother.*

### **5.1.3.3 Neighbouring Place to note**

An additional HO place – HO37 (War Memorial Adjacent to 1880 Mickleham Road, Mickleham) is located within the Mickleham Road reserve immediately adjacent to no. 1880 Mickleham Road. This HO place immediately adjoins the north-west corner of the study area but is outside of the PSP boundary. Consideration of this HO place is included in the PCHA given the proximity of the HO place to the study area. The statement of significance for HO37 (Mickleham War Memorial) included in the *City of Hume Heritage Study: Former Shire of Bulla District* is as follows:

*Erected in about 1920, the Mickleham War Memorial is of local historical and social significance as a representative example of the simple stone memorials erected by the residents of many rural communities to commemorate local participation in the Great War (World War I). Its significance is enhanced by the addition - on one side of the memorial - of the names of those in the district who served in World War II, and by the existence of the original enclosure.*

*In its prominent position on the roadside, a short distance from the former school building of Mickleham School No.1051 and opposite the former Methodist church, the memorial is a significant structure in the streetscape, and in the interpretation of the history of the community. It is further enhanced by the avenue of mature eucalyptus trees within which it is set.*

### **5.1.3.4 Commonwealth and International Heritage Lists**

The Commonwealth Department of the Environment and Energy (DoEE) maintains the National Heritage List (NHL), a list of natural, Aboriginal and historical heritage places of outstanding significance to the nation. DoEE also maintains the Commonwealth Heritage List (CHL), a list of natural, Aboriginal or historical heritage places located on Commonwealth land which have Commonwealth heritage values.

A place can be listed on one or both lists, and placement on either list gives the place statutory protection under the *Environment Protection and Biodiversity Conservation Act 1999* (EPBC Act).

The World Heritage List (WHL) lists cultural and natural heritage places which are considered by the World Heritage Council to have outstanding universal value.

There are no places included on the NHL, CHL or WHL within the study area.

## **5.2 Places without statutory protection**

### **5.2.1 Victorian War Heritage Inventory**

The Victorian War Heritage Inventory (VWHI) was established in 2011 to catalogue Victoria's war history such as war memorials, avenues of honour, memorial buildings, former defence sites and places of

commemoration. Places listed on the VWHI do not have statutory protection, however many are concurrently listed on the VHR, VHI, or local planning schemes.

There are no places included on the VWHI within the study area.

There are two places included on the VWHI which immediately adjoin the north-west corner of the study area but are outside the PSP boundary. These places are:

- the Mickleham War Memorial, Mickleham Road, Mickleham; and
- the Mickleham Avenue of Honour, Mount Ridley and Mickleham roads, Mickleham.

### 5.2.2 National Trust Register

The National Trust of Australia (Victoria) is an independent, not-for-profit organisation that classifies a number of heritage places. Listing on the National Trust Register (NTR) does not impose any statutory protection, however often National Trust listings are supported by the local council Planning Scheme.


There are three places classified by the National Trust of Australia (Victoria) within the study area (note that Dunhelen Homestead and the barn at Dunhelen Homestead are classified separately on the NTR). The places are:



- B3279 – State School No. 1051;
- B1212 – Dunhelen, Mickleham Road, Greenvale; and
- B3080 – Barn – Dunhelen Homestead.


### 5.2.3 Summary

A summary of the relevant historical heritage places subject to statutory heritage controls appears in Table 1.

**Table 1:** Summary of previously identified historical heritage sites within or immediately adjoining the study area

Register & Place Number	Place Name	Image	Associated historical theme	Within Study Area?
HO35 NTR B3279	State School No. 1051, 1880 Mickleham Road		Peopling Victoria's places and landscapes  Building towns and community life	Yes

Register & Place Number	Place Name	Image	Associated historical theme	Within Study Area?
HO31 NTR B1212 NTR B3080	Dunhelen House & Barn, 1240 Mickleham Road	 	<p>Peopling Victoria's places and landscapes</p> <p>Transforming land and natural resources</p>	Yes
VHI 0834	H7822- Sidebottom Homestead Site	N/A		No
HO37 VWHI	War Memorial, adjacent to 1880 Mickleham Road		Building towns and community life	No

Register & Place Number	Place Name	Image	Associated historical theme	Within Study Area?
VWHI	Mickleham Avenue of Honour, Mount Ridley and Mickleham roads		Building towns and community life	No

### 5.3 Previous heritage assessments

A search of previous heritage studies and relevant historical heritage assessments which include or adjoin the study area was undertaken to determine whether any additional sites of potential heritage significance within the study area have been previously identified as part of these studies. The studies consulted as part of this process included:

- David Moloney and Vicki Johnson, 1998. *City of Hume Heritage Study: Former Shire of Bulla District*, Volumes 1 -6;
- Olwen Ford and Gary Vines et al., 2000. *Hume Heritage Study: Former Broadmeadows Area and Environs*, Volumes 1 & 2;
- Biosis, 2017. *Heritage Overlay Review, Hume City Council*.
- Cultural Heritage Management Group, 2016. *Lindum Vale Dry Stone Wall Historic Heritage Assessment*.
- Victorian Planning Authority, 2017. *Lindum Vale (Mt Ridley West) Precinct Structure Plan*.
- Growth Areas Authority, 2010. *Craigieburn R2 Precinct Structure Plan*.
- Growth Areas Authority, 2011. *Greenvale North R1 Precinct Structure Plan*.

#### 5.3.1 City of Hume Heritage Study: Former Shire of Bulla District

The *City of Hume Heritage Study: Former Shire of Bulla District* was prepared in 1998 by David Moloney and Vicki Johnson and comprises six volumes which identified both individual places of heritage significance as well as heritage areas and cultural landscapes. Heritage places identified in this study were assessed as being of local, regional or State significance and recommended (where appropriate) for statutory heritage protection. The two HO places included in the study area were identified in this study.

No individual sites of potential heritage significance within the study area which are not currently subject to HO controls were identified in this study, however several cultural landscapes included (in part) within and adjoining the study area were identified in this study. Cultural landscapes were defined in this study as 'essentially the product of the interaction of human activity (culture or history) and geography (landscape)' (Moloney and Johnson, 1998, Vol 3: 5) The identified cultural landscapes within or adjoining the study area are outlined individually below:

#### **Mickleham Township:**

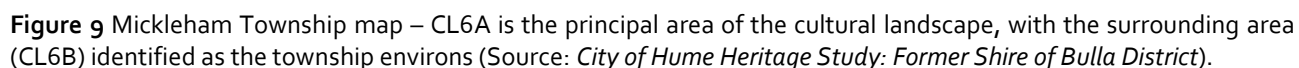
The Mickleham Township, identified in Figure 9, is included in part within the study area (south of Mt Ridley Road and east of Mickleham Road). The township was identified in the *City of Hume Heritage Study* as a cultural landscape of regional significance, for demonstrating the following historical themes:

- Towns/Hamlets;
- Transport; and
- Social and Civic Life.

The statement of significance for the Mickleham Township included in the study is as follows:

*The Mickleham township constitutes a key part of the rural character of the study area. It was formed principally as a centre for the farming community which established in the 1850s and continued until recent times. It is the only example of an intact small farming settlement remaining in the study area, and a rare farming settlement on the fringe of Melbourne. The township is also of historical significance as a former service centre for traffic on Mickleham Road which was a significant alternative route to Sydney at least until the early 1870s.*

*Its character is of a tiny, quintessentially Australian country settlement – set on a straight, relatively quiet through-road, having the longest avenue of mature eucalypts in the study area; situated adjacent to areas of remnant open woodland; and featuring, close together, a small former Primitive Methodist church, school, war memorial and former hotel/blacksmith/post-office. These express local historical features such as the use of bluestone for construction; some typical Australian historical townscape features; and the predominantly English ethnic origin of the pioneer farmers of this locality. The plantation demonstrates civic pride, and highlights the presence of the town in the surrounding landscape (Moloney and Johnson, 1998, Vol 3: CL6-1).*



- Parnell's Inn (outside of study area);
- Mickleham State School (located within the study area – refer 5.1.3);
- Mickleham Uniting Church (outside of study area);
- Mickleham War Memorial (outside of, but adjoining study area – refer 5.1.3); and
- Avenue of Sugar Gums on Mickleham Road (outside of, but adjoining study area).

## Oaklands

24

### Dry Stone Walls and Remnant Fencing:

The *City of Hume Heritage Study* also identifies the surviving timber fencing and dry stone walls within the municipality generally and notes in relation to historic fences and dry stone walls that:

*The fences have the potential to supply valuable information about the changes which have occurred in farming since the early 1850s in this region. They are a unique and ancient source of farming history* (Moloney and Johnson, 1998, Vol 3: 22).

The recommendation in relation to historic fencing and dry stone walls in Hume was for the preparation of a record of the distribution and condition of historic fences to ensure the best examples are identified and kept.

### 5.3.2 Hume Heritage Study: Former Broadmeadows Area and Environs

The area considered for the *Hume Heritage Study: Former Broadmeadows Area and Environs* is located to the south-east of the study area, south of Somerton Road. No further consideration of this heritage study has been undertaken, with the exception of investigating the historic land use and development of the area, as well as the associated historic themes.

### 5.3.3 Heritage Overlay Review

The *Hume Heritage Overlay Review*, undertaken by Biosis in 2017, was prepared to check the accuracy and appropriateness of mapping and description of places included in the Heritage Overlay to the Hume Planning Scheme. No previously unidentified sites of potential heritage significance within the study area were identified as part of this review. In relation to the heritage places included in the study area, the review recommended as follows:

- HO31 – Dunhelen (house and barn)

*HO extent should be extended to include the driveway, while the remaining extent can be reduced to include only the homestead, outbuildings and treed yards, excluding adjoining paddocks* (Biosis, 2017: 61).

No change was required to the place citation or statement of significance.

- HO35 – State School No. 1051

No changes were required to the mapped HO extent, place citation or statement of significance.

- HO37 – Mickleham War Memorial

No changes were required to the mapped HO extent, place citation or statement of significance.

### 5.3.4 Lindum Vale Dry Stone Wall Historic Heritage Assessment

The area for the *Lindum Vale Dry Stone Wall Historic Heritage Assessment* immediately adjoins the Craigieburn West PSP study area to the north (north of Mt Ridley Road). The dry stone wall assessment was prepared identify dry stone walls within the Lindum Vale PSP area, provide a statement of significance and future actions for the management of the dry stone walls. It was noted in this report that ‘no robust studies of any detail have been undertaken on dry stone walls within the Hume municipality’ (CHMG, 2016: 3).

Approximately 4.3 km of non-continuous dry stone walls were identified in the Lindum Vale PSP area, however less than 500 metres of these walls are two stone courses or higher.

An L-shaped section of dry stone wall on the corner of north-east corner of Mickleham and Mt Ridley roads adjoins the study area for this report to the north (refer to Section 7.3 of this report).

### 5.3.5 Lindum Vale (Mt Ridley West) Precinct Structure Plan

As noted in Section 5.3.4 above, the area for the *Lindum Vale (Mt Ridley West) Precinct Structure Plan* immediately adjoins the Craigieburn West PSP study area to the north (north of Mt Ridley Road). The relevant key objective of the Lindum Vale (Mt Ridley West) Precinct Structure Plan is to conserve and integrate key natural and cultural heritage elements into the design of subdivision, development, streets and open places. In terms of historic heritage features and places, the PSP identifies an existing HO place (HO36 – former Parnell's Inn), a number of dry stone walls and local parks and conservation areas. The PSP notes that the 'heritage value of the former Parnell's Inn and the existing dry stone walls will contribute to the creation of a strong neighbourhood character' (VPA, 2017: 11).

### 5.3.6 Craigieburn R2 Precinct Structure Plan

The area for the *Craigieburn R2 Precinct Structure Plan* immediately adjoins majority of the eastern boundary of the Craigieburn West PSP study area. The relevant image and character objective for the Craigieburn R2 PSP is to 'conserve and enhance the limited recognised heritage places and remnant windrows and tree planting where possible' (GAA, 2010: 27). In terms of historic heritage places, the PSP identifies six sites/places within the PSP area including one HO place (HO226 – Cloverlea Cottage), a rural homestead ruin and the remnants of four dry stone walls (GAA, 2010: 13).

### 5.3.7 Greenvale North R1 Precinct Structure Plan

The study area for the *Greenvale North R1 Precinct Structure Plan* incorporates part of the southern section of the Craigieburn West PSP study area (south of Ambition Drive). This portion of the study area was identified in the Greenvale North R1 PSP as an investigation area and described as follows:

*The investigation area is located in between the Mickleham and Mt. Aitken Neighbourhoods and is zoned Rural Conversation Zone.*

*The land shown as 'Investigation Area' may be developed for urban purposes. It is intended that, once the development potential of this area is established via a separate PSP and amendment process and subject to an appropriate catchment protection measure being agreed to the satisfaction of Melbourne Water, the Investigation Area may be rezoned for urban development in the future (GAA, Greenvale North (R1) PSP: 17).*

The PSP notes that 'an opportunity exists for the Investigation Area to be developed subject to further investigations and the implementation of appropriate reservoir protection measures' (GAA, Greenvale North (R1) PSP: 19).

More broadly, the relevant image and character objective for the Greenvale North R1 PSP is to 'conserve and enhance recognised heritage places' (GAA, 2011: 27). In terms of historic heritage places, the PSP identifies

only one heritage place – ‘part of the eastern portion of the PSP area which was formerly used by The Royal Australian Navy for armaments testing. This site also contains several features that have high potential for historic heritage value and the complex has been attributed with heritage significance at a local level at least’ (GAA, 2011: 11).

## 6 HISTORICAL CONTEXT

---

This background review includes research relating to historical cultural heritage within or associated with the study area.

### 6.1 Regional history

Sydney Road was first established in the 1840s, as a dirt track between Melbourne to Sydney. It served as the main road through Craigieburn, which served as a stopover point for Sydney-bound travellers. Bailliere (1865) first described Craigieburn as “A small hamlet in the Parish of Kalkallo on the Merri Creek and Sydney Road, about 3½ miles from Donnybrook. The country is undulating and occupied by a few small farmers. The land is not considered good for agricultural purposes and has scarcely any timber”.

During the 1850s gold rush, Craigieburn prospered as travellers heading to the gold fields in Bendigo frequently stopped by. The former Sydney Road remained a major thoroughfare and was gradually upgraded over time, eventually being renamed the Hume Highway in 1928. It was redirected along its current alignment in 1962 to ease traffic flow. Previously it had run where the modern Potter Street now lies, before resuming its original alignment to the north of the Craigieburn Road Upgrade.

In April 1872, the railway line servicing Essendon and Seymour was opened and stopped at Craigieburn on request (Hume Libraries 2017). With its daily trains to and from Melbourne, the Craigieburn Railway Station was an incentive for many prospective buyers. By the 1840s, the land comprising the Craigieburn Road Upgrade and surrounds had been cleared and settled by farmers and graziers. Dairying, sheep and cattle farming have been the primary industries and land use in Craigieburn since European settlement (Payne 1980: 105).

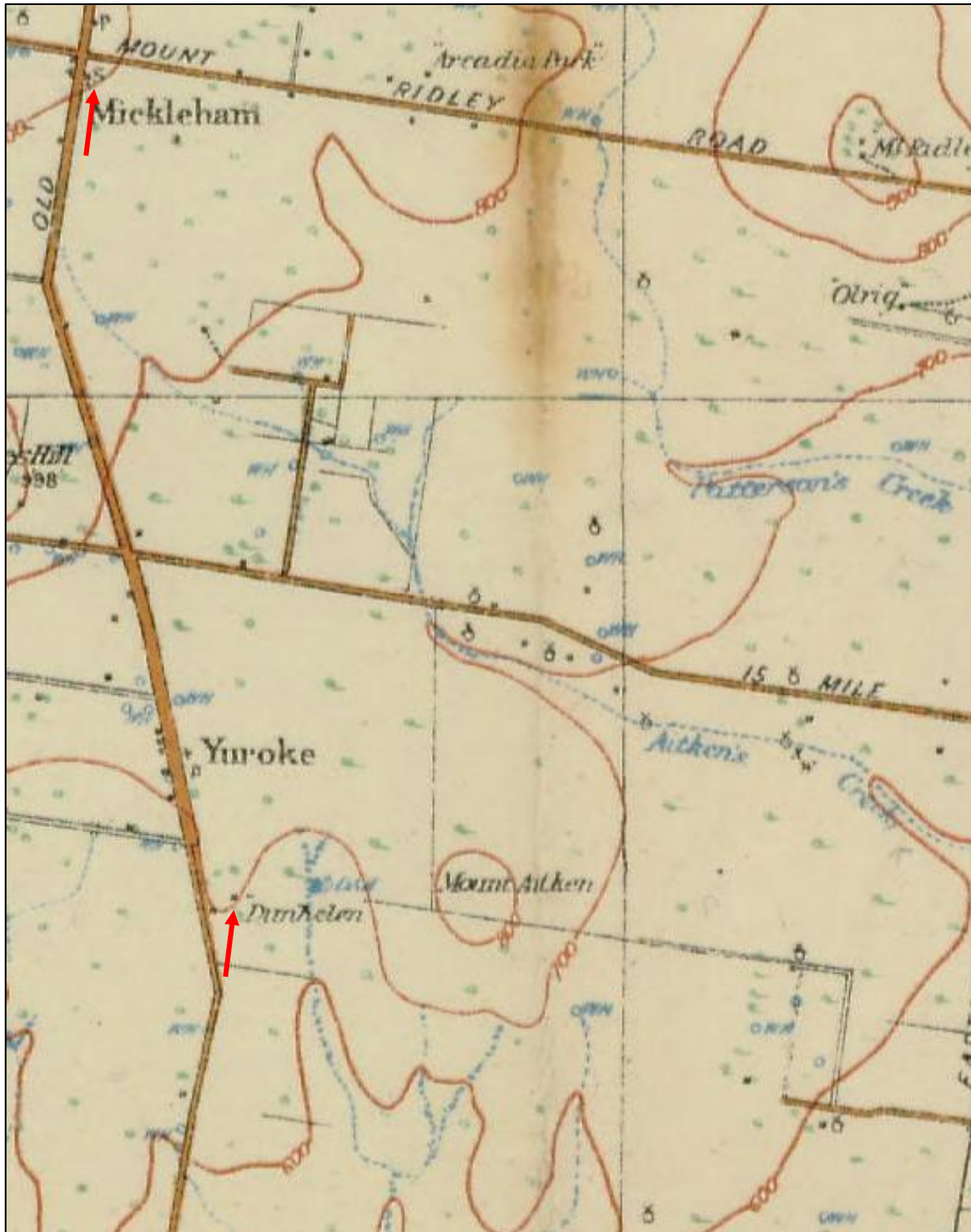
Craigieburn became a part of the Broadmeadows Shire Council when it was formally established in 1871. As the population grew and the area prospered, boundaries of the Shires were eventually restructured. In 1955 Greenvale, Mickleham, Yuroke and Craigieburn changed from the Shire of Broadmeadows to the Shire of Bulla. As the population continued to expand and changes took place within local government areas, the City of Hume was formally established in 1995, replacing the Shire of Bulla and the City of Broadmeadows (Hume Libraries 2017). In 2016, Craigieburn had a population of 50,347, which is expected to double in the next 10 years (ABS 2017).

### 6.2 Review of historical sources

#### 6.2.1 Historic maps

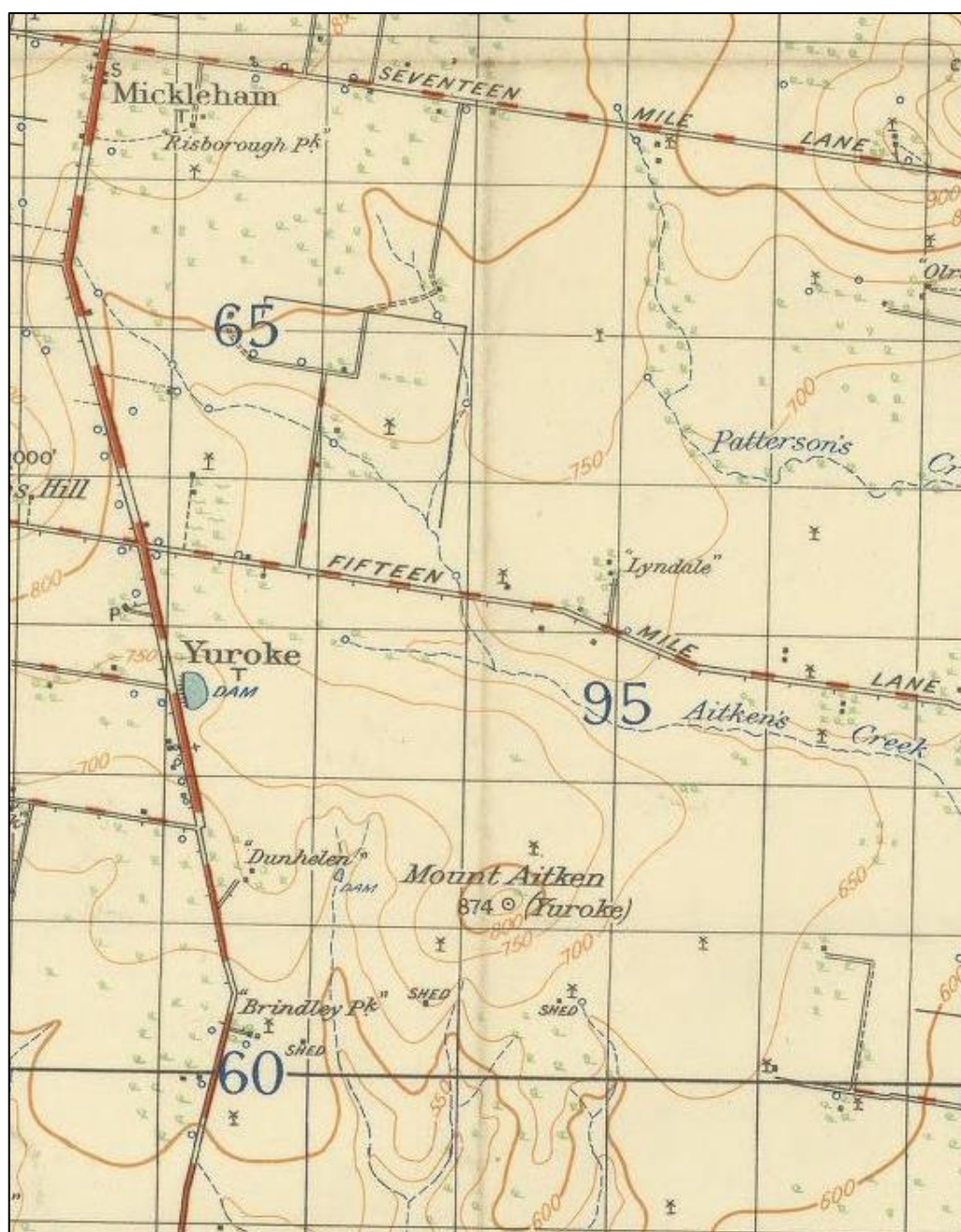
The study area falls within the parishes of Mickleham (to the north) and Yuroke (to the south). The 1917 Military Survey at Figure 10 identifies the location of the two HO places within study area – Mickleham State School No. 1051 (HO31) and Dunhelen (HO35). Also identified on the 1917 plan are a small number of residences, generally concentrated along what are now Mickleham and Craigieburn roads, and what appears

to be a church north of Dunhelen and south of Craigieburn Road. In addition, a small section of dry stone walling is identified north of Craigieburn Road.



**Figure 10:** 1917 Military Survey of Australia: Ballan, Sunbury, Meredith & Melbourne showing the location of the study area. The two HO places (Mickleham State School No. 1051 (HO31) and Dunhelen (HO35) are identified in red (Source: State Library of Victoria Maps Collection)

The 1938 Ordinance plan at Figure 11 identifies all of the residences, the church and dry stone walls included in the 1917 plan, and in addition identifies the location of two Post and Telegraph offices – one in Yuroke and one in Mickleham, as well as the location of a homestead (Risborough Park) and entry from Mt Ridley Road. Several tracks leading to residences and a large number of water holes, both associated with residences and along Aitken Creek, are also indicated on this plan. In addition, there are a small number of sheds and windpumps in the southern section of the study area to the south and east of Dunhelen and a homestead (Brindley Park) was previously located to the west of the additional study area, within the area of the recent residential subdivision (outside the PSP study area).



**Figure 11:** 1938 Ordinance plan of Sunbury. The study area is approximately identified in red (Source: State Library of Victoria Maps Collection)

### *Risborough Park*

Risborough Park is identified as one of the more substantial properties within the study area on the 1938 plan. Early in 1850, 800 acres was selected at Mickleham and named 'Risborough Park' by Thomas and Jane Saunders. The property was later occupied by their son Thomas Jnr. Thomas Jnr and his wife Ruth reportedly moved to 'Risborough Park' in 1879 and constructed the homestead with bluestone foundations. The land on which the Mickleham School is situated was originally part of 'Risborough Park'. This land was purchased for the school for £10 from Thomas' son William, who was living at 'Risborough Park' at the time (CHIG Inc.).

In 1930, the property was the subject of a mortgagees' auction. At that time comprising 400 acres, the property was described as one of the best equipped farms in the state and included a homestead of nine rooms with verandahs all round, a garden, shearing shed, sheep yards, stable, fowl pens, numerous other outbuildings and subdivided paddocks with substantial sheep proof fencing. The Age reported prior to the auction that

*The country is level and slightly undulating... the situation is good, with State school on corner of property and post office close by... (The Age, 06/12/1930: p. 8).*

Risborough Park was reportedly demolished in 1988 prior to subdivision of the property (CHIG Inc.).

## **6.2.2 Historic aerial photographs**

The earliest available aerial photographs of the study area held by Land Victoria date from the early 1950s and 1960s (refer Figure 12 – Figure 14). These aerial photographs were examined to identify additional potential historical places that were not identified on the maps, as well as to determine the location of historical places which may have been demolished.

What is clearly evident in these images is the overwhelmingly pastoral nature of the study area in the mid-twentieth century. There are some buildings and structures evident within the study area, but generally the land appears to have been used for pastoral/farming purposes.

The 1963 aerial image of the northern portion of the study area (Figure 12) clearly indicates the concentration of building which made up the Mickleham Township identified in the 1998 *City of Hume Heritage Study* (refer 5.3.1). It is noted however that only the Mickleham State School associated with this township is located within the study area. Also evident on this image is the location of what appears to be the Risborough Park homestead (or a later residence in this location), outbuildings and driveway entry from Mt Ridley Road. There does not however by this time appear to be any surviving buildings or structures associated with the Mickleham Post and Telegraph Office or the residence on Mickleham Road.



**Figure 12:** 1963 aerial image of the northern portion of the study area– alignment of Mt Ridley road on the corner of Mickleham Road indicated (Source: Land Victoria Historic Aerial Photos)

The 1951 aerial image of the central portion of the study area (Figure 13) indicates the location of the existing weatherboard residence at the easternmost end of Olivers Road (also indicated on the 1917 and 1938 plans), as well as a small number of buildings/structures along or in proximity to Mickleham and Craigieburn roads. These buildings/structures, or replacement buildings/structures in the same location, survive within the study area. By this time however, there does not appear to be any surviving buildings or structures associated with the Yuroke Post and Telegraph Office.

The 1951 aerial image of the southern portion of the study area (Figure 14) indicates the location of the residence, barn, outbuildings and driveway entry to Dunhelen. With the exception of a single building to the north of Dunhelen on Mickleham Road (this appears to be the location of the church indicated on the 1917 and 1938 plans), the remainder of the southern portion of the study area was used exclusively for pastoral or farming purposes. None of the sheds or windpumps indicated within the southern section of the study area in the 1938 plan (Figure 11) are visible in the 1951 and 1984 aerial photographs at Figure 14 and Figure 15.



**Figure 13:** 1951 aerial image of the central portion of the study area – the alignment of Craigieburn Road at the intersection with Mickleham Road indicated by the arrow (Source: Land Victoria Historic Aerial Photos)



**Figure 14:** 1951 aerial image of the southern portion of the study area (Dunhelen (HO35) identified by the arrow)  
(Source: Land Victoria Historic Aerial Photos)



**Figure 15:** 1984 aerial image of the study area south of Dunhelen (indicated) and north of the Greenvale Reservoir (Source: Land Victoria)

### 6.2.3 Historical heritage site prediction statement

The following site prediction statement has been formulated from the desktop review of previous studies and assessments, as well as historic maps and aerial photographs of the study area. The statement presented is based on a site type approach. The review of the previously recorded historical places and heritage studies of the local area indicates that the most likely site types in the study area are farming sites, pastoral sites, domestic sites, dry stone walls and tree plantings. These are discussed in greater detail below:

- Farming sites are likely to occur in the study area because of the longstanding use of the study area as predominantly pastoral or farming land. Evidence of farming may include fence lines, dams, water channels, plantings or terracing.
- Pastoral sites are similarly likely to occur in the study area because of the use of the land for pastoral and farming purposes. Breeding of livestock and dairying may be evidenced by the remains of stockyards, stables, barns, enclosures and holding pens.
- Domestic sites are likely to occur in the study area because of the early residential occupation parts of the study area, albeit to a lesser extent than farming or pastoral use. Evidence of domestic occupation may include structural remains or ruins of homesteads and/or outbuildings, domestic rubbish dumps or bottle dumps, wells or underground storage tanks.
- Dry stone walls are likely to occur in the study area due to the prevalence of this type of wall as part of nineteenth century farming practices. Dry stone walls may line internal property divisions or

external property boundaries. Stone lining was also used for artificial water channels i.e. dams, drainage trenches and lines etc.

- Tree plantings are likely to occur in the study area due to the use of this type of planting in farming practices. Historical tree plantings may be evidenced by large introduced trees planted along original driveways, paddock boundaries or close to homestead sites.

## 7 FIELD SURVEY


Targeted visual inspections of the study area were undertaken on 19 and 28 November 2018 by Michelle Knehans and Emma Russell. The first inspection focussed on known heritage places, including those subject to statutory heritage controls, while the second also investigated places/elements identified through historical research and during the initial field survey.

The initial field survey involved an inspection of the study area in a vehicle and was limited to inspecting the study area from the public domain only (i.e. from public roads and footpaths). This inspection identified a number of sites of potential heritage significance as well evidence of the more recent development of the study area for religious and community services (refer Table 2 and Table 3 below). The subsequent targeted inspection was undertaken with the permission of the landowner or manager. Where possible, the landowners were also consulted in relation to other sites/elements of potential heritage significance within their property.


### 7.1 Historical places located within the study area

Table 2 outlines the historical places not subject to statutory heritage controls located within the study area. The associated historical theme for each place, as identified in the thematic history of the study area (refer to Section 4 of this report) is also identified for each place.


**Table 2:** Places of potential heritage significance within the study area

Address	Image	Associated historical theme
Dry stone wall 220 Olivers Road, Mickleham		Transforming land and natural resources

Address	Image	Associated historical theme
Dry stone wall enclosure 250 Olivers Road, Mickleham		Transforming land and natural resources
Remnant dry stone wall (single course) 1780 Mickleham Road, Mickleham		Peopling Victoria's places and landscapes  Building towns and community life
Stone lined dam 1630 Mickleham Road, Mickleham		Transforming land and natural resources

Address	Image	Associated historical theme
<p>Stone lined drainage feature 1390 Mickleham Road, Mickleham</p>		<p>Transforming land and natural resources</p>
<p>Remnant post and wire fencing and tree plantation row 1340 Mickleham Road, Mickleham</p>		<p>Transforming land and natural resources</p>


Address	Image	Associated historical theme
<p>Tree plantation row Various throughout study area</p>	 	<p>Transforming land and natural resources</p>
<p>Weatherboard residence 250 Olivers Road, Mickleham</p>		<p>Peopling Victoria's places and landscapes</p>



Address	Image	Associated historical theme
Potential archaeological place Risborough Park, 1780 Mickleham Road, Mickleham	 <p>Source: Google maps</p>	N/A


## 7.2 Places of worship within the study area

As identified in the thematic history of the study area (Section 4), the study area has been occupied within the last few decades by several churches, temples or places of worship, as well as for community use. These places are outlined in Table 3 below.

**Table 3:** Places of worship or community services within the study area

Address	Image	Associated Historical theme
Syrian Orthodox Church 75 Whites Lane, Mickleham		<p>Peopling Victoria's places and landscapes</p> <p>Building towns and community life</p>


Address	Image	Associated Historical theme
<p>             Buddhist Temple              Daham Niketanaya              1690 Mickleham Road, Mickleham           </p>		<p>Peopling Victoria's places and landscapes</p> <p>Building towns and community life</p>
<p>             Islamic Community              Milli Gorus              Craigieburn Incorporated              1550 Mickleham Road, Mickleham           </p>		<p>Building towns and community life</p>




Address	Image	Associated Historical theme
<p>Mickleham Community Centre &amp; Tennis Courts</p> <p>685 Mt Ridley Road, Mickleham</p>		<p>Building towns and community life</p>

### 7.3 Places adjoining the study area

Similar heritage places and places of worship were also identified outside of, but adjoining the study area. These places are identified as Table 4 and provide evidence of land use surrounding the study area.

**Table 4:** Places of potential heritage significance/worship/community services adjoining the study area

Address	Image	Associated historical theme
<p>Tibetan Buddhist Society and Rose Garden</p> <p>1425 Mickleham Road, Yuroke</p>		<p>Peopling Victoria's places and landscapes</p> <p>Building towns and community life</p>

Address	Image	Associated historical theme
Dry stone wall 1960 Mickleham Road, Mickleham		Transforming land and natural resources
Dry stone wall East side of Whites Lane, Mickleham		Transforming land and natural resources
Dry stone wall and tree plantation row 200 Olivers Road, Mickleham		Transforming land and natural resources

## 8 ASSESSMENT OF SIGNIFICANCE

---

The following assessment outlines the nature of historical (post-contact) heritage within the study area and provides an assessment of the significance of the places/elements identified through the desktop study and field survey.

As previously outlined, the study area has been subject to pastoral and farming practices from the mid-nineteenth century, and this land use remains throughout the majority of the study area. The historical heritage site prediction statement at Section 6.2.3 identified that pastoral and farming sites were the most likely to be found within the study area.

### 8.1 Assessment criteria

In Victoria, places and objects of cultural heritage significance are protected and managed through one or more statutory mechanisms. The statutory protection afforded to heritage places depends on the assessed significance of the place.

Assessment criteria are used to determine the heritage values of heritage places. The thresholds to be applied in the assessment of significance are 'State Significance' and 'Local Significance'. 'Local Significance' includes those places that are important to a particular community or locality (DELWPb). For a place to be included in the Victorian Heritage Register or a local planning scheme Heritage Overlay, it must meet at least one of the following criteria adopted by the Heritage Council of Victoria in 2008.

***Criterion A:** Importance to the course, or pattern, of Victoria's cultural history.*

***Criterion B:** Possession of uncommon, rare or endangered aspects of Victoria's cultural history.*

***Criterion C:** Potential to yield information that will contribute to an understanding of Victoria's cultural history.*

***Criterion D:** Importance in demonstrating the principal characteristics of a class of cultural places and objects.*

***Criterion E:** Importance in exhibiting particular aesthetic characteristics.*

***Criterion F:** Importance in demonstrating a high degree of creative or technical achievement at a particular period.*

***Criterion G:** Strong or special association with a particular community or cultural group for social, cultural or spiritual reasons. This includes the significance of a place to Indigenous peoples as part of their continuing and developing cultural traditions.*

***Criterion H:** Special association with the life or works of a person, or group of persons, of importance in Victoria's history (DELWPa).*

## 8.2 Significance of places within the study area

The following table outlines all of the known heritage places, places of potential heritage significance as well as the places of worship or community use within the study area, and provides an initial assessment of the cultural heritage significance of these places. Note that only the places included within the study area are included in the table below. Further assessment of some of these places is recommended (refer to Section 9 of this report).

**Table 5:** Initial assessment of heritage places within the study area

Place Name	Statutory listing	Significance level
State School No. 1051, 1880 Mickleham Road	HO35	Local
Dunhelen House & Barn, 1240 Mickleham Road	HO31	Previously assessed as being of State significance
Dry stone wall 220 Olivers Road, Mickleham	N/A	Potential local
Dry stone wall enclosure 250 Olivers Road, Mickleham	N/A	Potential local
Remnant dry stone wall (single course) 1780 Mickleham Road, Mickleham	N/A	Unlikely to meet local significance threshold
Stone lined dam 1630 Mickleham Road, Mickleham	N/A	Unlikely to meet local significance threshold
Stone lined drainage feature 1390 Mickleham Road, Mickleham	N/A	Unlikely to meet local significance threshold
Remnant post and wire fencing and tree plantation row 1340 Mickleham Road, Mickleham	N/A	Potential local
Tree plantation row Variously throughout study area	N/A	Potential local
Weatherboard residence 250 Olivers Road, Mickleham	N/A	Unlikely to meet local significance threshold
Risborough Park, 1780 Mickleham Road, Mickleham	N/A	Potential archaeological place

Place Name	Statutory listing	Significance level
Syrian Orthodox Church 75 Whites Lane, Mickleham	N/A	Potential local
Buddhist Temple Daham Niketanaya 1690 Mickleham Road, Mickleham	N/A	Potential local
Islamic Community Milli Gorus Craigieburn Incorporated 1550 Mickleham Road, Mickleham	N/A	Potential local
Mickleham Community Centre & Tennis Courts 685 Mt Ridley Road, Mickleham	N/A	Unlikely to meet local significance threshold

### 8.2.1 Places subject to statutory heritage controls

There are no places in the study area that are subject to State level listing on the VHR, however ‘Dunhelen,’ (HO31) comprising a homestead and barn at 1240 Mickleham Road was assessed in the 1998 *City of Hume: Heritage Study of the Former Shire of Bulla District* (Maloney, D. and Johnson, V.) as being of State significance. The barn was also classified to be of State significance by the National Trust in 1968. It is recommended that this place be formally nominated for inclusion in the Victorian Heritage Register.

Two other places are included in the Schedule to the Heritage Overlay of the Hume Planning Scheme - Mickleham State School No. 1051 (HO35) and the War Memorial (HO37 – outside of the study area). The remainder of the places were not previously identified as being of cultural heritage significance.

In terms of integrating these heritage places into an urban context as part of the urban development of the PSP area, the heritage provisions in the Hume Planning Scheme outlined at Section 3.2 of this report provide guidance in relation to development within and surrounding heritage places. The relevant strategies at Clause 15.03-1S of the Hume Planning Scheme (Heritage Conservation) note the necessity to encourage appropriate development that respects places with identified heritage values and to ensure that an appropriate setting and context for heritage places is maintained or enhanced. Similarly, the relevant strategies at Clause 21.04-4 (Built Environment and Heritage) identify that it is critical to ensure that new subdivisions do not compromise identified heritage values, that new growth areas protect, and where possible integrate heritage sites into the design of subdivisions, particularly open space areas, ensure development maintains the visual prominence of historic buildings and local landmarks and ensure that the use and development of heritage places and adjoining land is compatible with and does not adversely affect the significance of the place.

With specific regard to the Mickleham State School No. 1051 (HO35), this building is visible and prominent in views to the school site from Mickleham Road. It forms part of a group of buildings currently in use within the school site. The statement of significance for the school building notes that it is historically significant for its association with the early establishment of a pastoral community in Mickleham and for its continuing use as part of the present school. Architecturally, the building is significant as a substantially intact nineteenth

century schoolhouse erected by the Board of Education. It is anticipated that the use of the school building by Mickleham Primary School will continue as part of the urban development of the PSP area, which will maintain the historical association of the place as an educational building within the broader Mickleham township area. Given the anticipated continued use, it is unlikely that new urban development will encroach into the setting of the school building or obscure viewlines to the building from Mickleham Road.

By contrast, Dunhelen (HO31) is set back from Mickleham Road and not currently visible from the public domain. It is a private residential property within a rural setting. The statement of significance for Dunhelen notes that the homestead is historically and architecturally significant as a distinctive and substantially intact nineteenth century bluestone and granite Italianate dwelling and that the barn is an early, historically important and exceptionally fine example of a masonry barn/woolshed. The open pastoral setting surrounding the homestead and barn is critical to an understanding of the historic use of the property, and the proposed revision to the extent of HO31 to include the driveway, the homestead, outbuildings and treed yards (Biosis, 2017: 61) is considered appropriate to capture the historically and architecturally important components of the heritage place. It is preferable that no new development be proposed within the extent of the heritage place, however should new urban development be proposed within the current (or proposed revised) HO extent, care should be taken to ensure that the open space, setting, presentation and understanding of Dunhelen as a nineteenth century pastoral property is not compromised.

### **8.2.2 Weatherboard residence at 250 Olivers Road**

There is remarkably little historical evidence for this house that could be determined in the time frame available. In 1917 a Military Survey of Australia (refer to figure 16) was taken with detailed mapping of roads, contours and landscape features. This map indicates that Oliver's Road was in existence by then as a 'fourth class fenced road', and that a 'fourth class unfenced road' already headed north-west off Oliver's Road just as it does today. There is a mark at the end of this unfenced road that indicates a house was in existence there.

Very little had changed in the area by the time of a subsequent survey in 1938 (refer to figure 17), the only real difference being a couple of water holes established along Oliver's Road, one of them at the junction with the track heading north-west. This map is sharper than the 1917 map and the mark at the end of the unfenced road is clearly a double quotation mark ["] rather than the dark square with a border used to show a house.

A 1951 aerial photograph (refer to figure 18) shows a building in approximately the same position as the current house, due north from the end of the north-west unfenced road, although it is not clear that the building is the same as the one that exists today. The 1951 image shows a distinct lack of trees compared to today, also missing is the row of trees along the driveway shown in the image above.

In 1963 Minnie Oliver of Whites Lane, Craigieburn, Widow, inherited the subject land described as being a little over twenty acres on Lot 2, Plan of subdivision No. 37205 in the Parish of Yuroke. The Certificate of Title (refer to figure 19) did not describe any property, nor show any buildings on the plan.

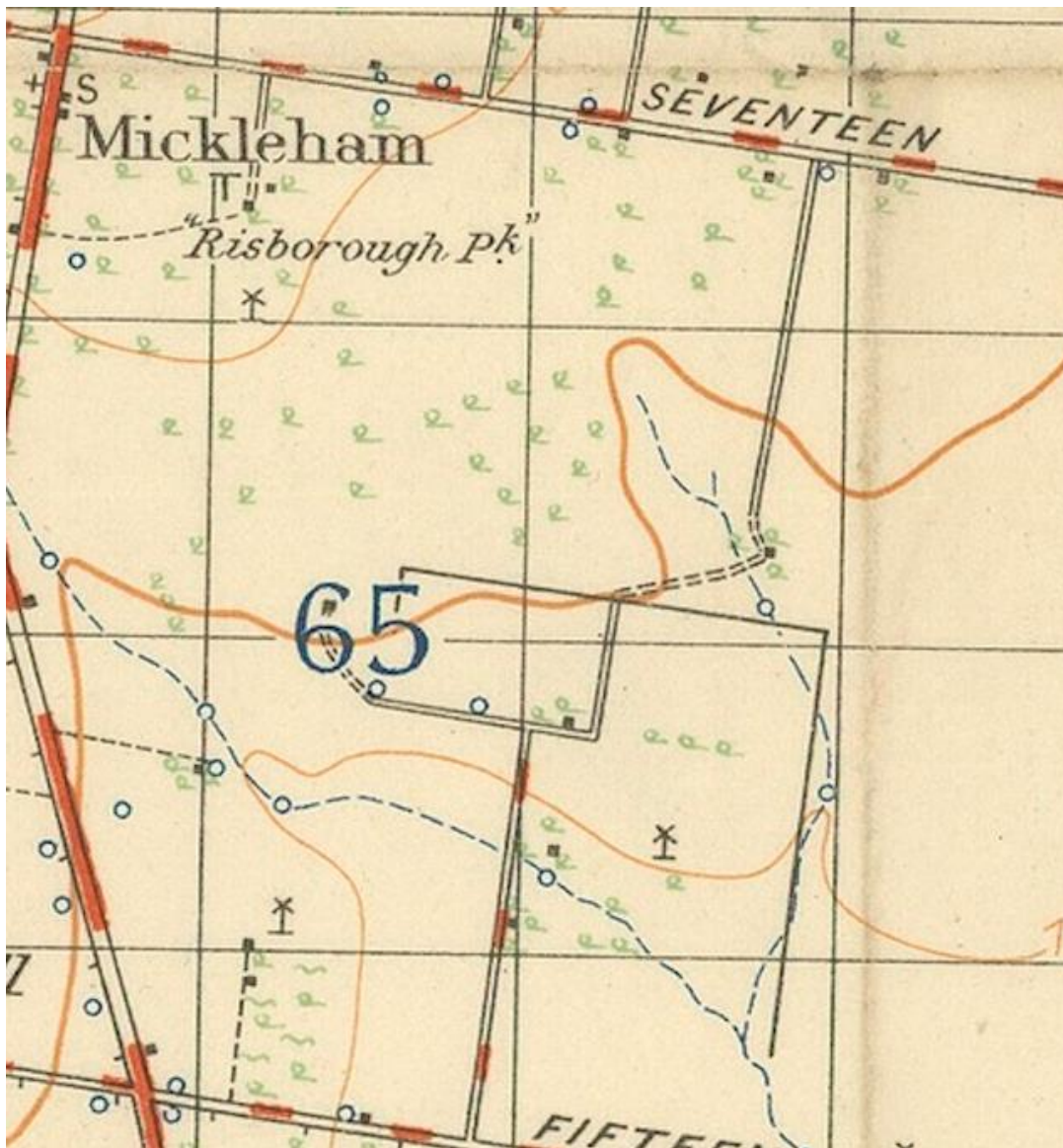
A title search for Volume 02919 Folio 799, the 'Parent title' of Volume 8451 Folio 799, being Minnie Oliver's Certificate of Title established in 1963, came up with the unusual notification that 'The volume/folio you entered is cancelled. Property certificate searches can only be obtained on live titles.' We were therefore unable to conduct a title search further back than 1963.

The Broadmeadows rate books (RB) available online (up to 1899) recorded no Olivers' Road, neither did the Sands and McDougal Directories (S&M) as late as 1974 (the last S&M available). Nor did they record a White's Lane, although there were three entries in the 1889 RB for properties owned and occupied by Alfred and Frederick White (WB House & Land 59 acres; Land 50 acres; WB House & Land 20 acres). It is quite possible that White's Lane was named by or after this family of owners. There were no entries for anyone named Oliver.



**Figure 16:** Military Survey of Australia: Ballan, Sunbury, Meredith & Melbourne, August 1917, State Library Victoria

1917: 250 Olivers Road is a house at the end of an unformed and unfenced road that heads north-west from the end of Olivers Road.



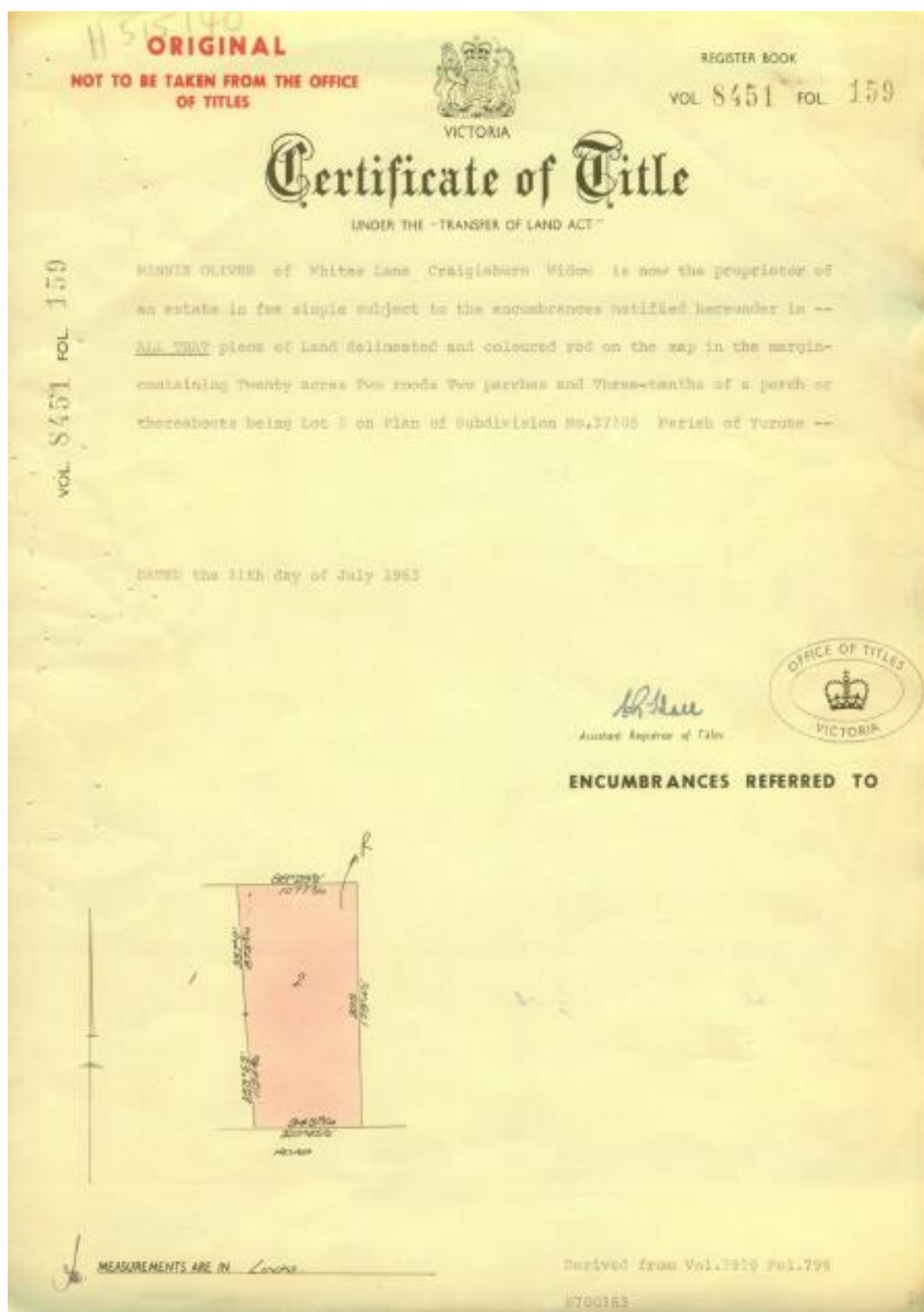
**Figure 17:** Military Survey of Australia, 1938 (Source: State Library of Victoria)

1938: A subsequent Military Survey of Australia in 1938 showed little substantial change to the immediate area apart from a series of water holes created along the street, one of them at the junction of Olivers Road and the as yet unmade road to the house at number 250



**Figure 18:** 1951 Aerial image (Source: State Library of Victoria)

1951 aerial image showing Oliver's Lane in the bottom and the north-west track joining a new pathway that did not exist in 1938. The building on the left of the new road is in approximately the same location as the house today, but it looks different and has no trees surrounding it. Some of the buildings to the north-east of this building are similar to those that exist today



**Figure 19:** Certificate of Title dated 11 July 1963 for the subject land (Source: <https://www.landata.vic.gov.au>)

It is unlikely that the house at 250 Oliver's Road is the same as the house in the 1917 Military Survey map as they are in slightly different locations (the 1917 house directly at the end of the north-west track, and 2018 house due north of this point). There is also not adequate evidence to be certain that the subject house is the same as the one in the 1951 aerial. In addition, the 1963 Certificate of Title does not indicate a building of any sort in the description or the plan.

In summary, no evidence has been found to substantiate a claim for aesthetic, historical, social or scientific cultural heritage significance at either a State or local level.

### 8.2.3 Archaeological potential

Archaeological potential usually relates to the presence of sub-surface deposits at a site. All sites of archaeological potential should be included on the Victorian Heritage Inventory (VHI), however all historical archaeological sites older than 75 years in Victoria are protected under the *Heritage Act 2017*, regardless of whether they are included in the VHI. It is an offence under this Act to 'knowingly or negligently deface, damage or otherwise interfere with, or carry out an act, likely to endanger a site recorded in the VHI or an archaeological site which is not recorded in the VHI.'

One place within the study area, Risborough Park, 1780 Mickleham Road, Mickleham is considered to have archaeological potential on the basis of evidence for previous structures to have existed there, and an assumption that the site has not been subject to the kind of significant ground disturbance that would have destroyed any subsurface deposits. The sites of the former Post and Telegraph Offices, church and previous residences as identified on the 1917 and 1938 plans may also contain archaeological deposits, considering their location and relatively minimal development which has been undertaken in these locations.

To ensure that any historical archaeological remains within the PSP study area are not impacted by future urban development, a detailed investigation into the archaeological potential of Risborough Park, as well as the sites of the former Post and Telegraph Offices, church and previous residences as identified on the 1917 and 1938 plans should be undertaken to determine whether these sites should be included in the VHI. The detailed investigation should be undertaken by a suitably qualified and experienced archaeologist and incorporate and expand (as necessary) the historical research undertaken for this PCHA to develop a historical archaeological site prediction statement. Additionally, a targeted ground survey should be undertaken to detect the presence of historical cultural heritage, or areas of archaeological likelihood, in or associated with the study area.

### 8.2.4 Dry stone walls/stone features

The study area sits within a volcanic plain, which accounts for the stone strewn across the study area. In the nineteenth century this basalt was frequently used to create dry stone walls and identify boundaries. Often these were constructed by professional stonemasons or at least by people who were familiar with the techniques required, but there is little evidence of sophisticated or knowledgeable dry stone walling in the Study Area. Instead, it is likely that farmers or their labourers or field hands may have been responsible for their construction. Irrespective of their technical competency, remnant walls are characteristic features of the area and provide evidence of former land use. As such, they should be retained for their place-making value.

Without the benefit of a dry stone wall assessment for the entire Study Area or any individual walls, blanket protection should be provided for all dry stone walls. Unless otherwise agreed by the Responsible Authority, an application to demolish, remove or alter a dry stone wall or to subdivide land containing a dry stone wall, must be accompanied by a dry stone wall management plan.

With regard to the other stone lined features within the study area (i.e. dam, drainage feature etc but excluding dry stone walls), this assessment concludes that these are unlikely to meet the threshold for local heritage significance. As noted in Section 8.1 above, for a place to be identified as being of local aesthetic, historic, scientific, social or spiritual significance, it must meet at least one of the identified criteria at a local level. Currently, there is only one example of a dry stone wall included in the Schedule to the Heritage Overlay of the Hume Planning Scheme, and no stone lined landscape features such as those located within the study area are included in the HO. They are unlikely to meet the local significance threshold as there is little opportunity for the demonstration of skilled workmanship, technical achievement or notable aesthetic characteristics in these features when compared with dry stone walls. The stone lined dam and drainage features located within the study area provide evidence of the former pastoral land use of the study area, but this is demonstrated more meaningfully elsewhere through dry stone walls, historic tree lines and pastoral/farming buildings. The dam and drainage features are not rare or unusual within the landscape and there is no strong or special association with a particular community or cultural group for social, cultural or spiritual reasons.

### 8.2.5 Tree plantation rows

Tree plantation rows in the rural landscape were often established as windbreaks or to define property/paddock boundaries. They may be historically valued as demonstrative of the former pastoral land use of a particular area, and/or aesthetically important and valued for their beauty and contribution to landscape amenity (Spencer, 2014: 53).

Previous assessments of trees throughout the City of Hume have resulted in six individual, pairs or groups of trees in the municipality being included in the National Trusts of Australia Register of Significant Trees. None of these trees are located within the study area. Within the study area, there is a Vegetation Protection Overlay (VPO4) for four large Red Gums which are located in the southern section of the study area (in the Greenvale Rise Development Site), and an Environmental Significance Overlay (ESO11) over the northern portion of the study area (to the extent of 1760, 1780, 1800 & 1880 Mickleham Road and 685 Mt Ridley Road). ESO11 also extends to the north of Mount Ridley Road, outside of the Craigieburn West PSP study area. The River Red Gum and Grassy Woodlands covered by ESO11 includes the Mount Ridley Flora and Fauna Reserve and the Mickleham Woodlands, typically characterised by individual trees dispersed through the study area. There are no historic tree plantation rows in this northern section of the study area.

The tree plantation rows identified in Table 5 as being of potential local significance are primarily located within the central and southern portions of the study area and provide evidence of the former pastoral use of the land. Not all are historic tree lines – a comparison of the 1950s and 1960s aerial images with the current aerial indicates that the majority of the existing tree lines south of Craigieburn Road have been more recently introduced. By contrast, the tree lines aligning the property boundary at no. 1630 Mickleham Road appears to have been established at least by the mid-twentieth century. Notwithstanding that they are not all historic features, the existing tree lines contribute to the pastoral setting and aesthetic value of the study area. Where

possible, the tree lines should be retained within the study area and incorporated into open space or along roadways within the urban subdivision to provide visible evidence of the former pastoral use of the land.

### **8.2.6 Places of worship**

The comparatively high number of churches/temples/places of worship within the study area is understood to be a result of the availability of large and relatively inexpensive properties in this area, as well as the varied migrant settlement of the surrounding area. These places have been established within the last few decades, although there does appear to have been a church within the study area in the early twentieth century (identified on the 1917 and 1938 plans).

## 9 RECOMMENDATIONS

---

This section provides a summary of the recommendations made in relation to the historical heritage values of the study area.

This report and its management recommendations are designed to minimise any impacts on significant post-contact heritage places which might arise from the development of the study area. For those places which are subject to statutory heritage controls, it will be necessary for any proposed development to comply with the appropriate legislation – namely the *Heritage Act 2017* and the *Planning and Environment Act 1987*.

### **Recommendation 1: Protection of historical places and settings**

Any subdivision or development of land within or adjoining a heritage place included in the Schedule to the Heritage Overlay of the Hume Planning Scheme and/or identified places or sites of heritage significance, must have regard for the heritage significance of the place (and its associated setting where appropriate) and provide a sensitive interface.

The historic context of public heritage places should be preserved through the provision of public open space adjacent to the heritage place and/or through sufficient landscape setbacks, as well as the provision of interpretive signage.

Development and/or new built form should respond to the scale, proportion and materials of adjacent or nearby heritage places. New development in these areas should sensitively respond to the historic place and must be developed in accordance with the objectives of the Heritage Overlay, and any other relevant state or local policies (refer to Section 8.2.1).

### **Recommendation 2: Nomination to the Victorian Heritage Register**

It is recommended that ‘Dunhelen,’ (HO31) comprising a homestead and barn at 1240 Mickleham Road, is nominated for inclusion in the Victorian Heritage Register.

### **Recommendation 3:: Potential archaeological sites within the study area**

The site of the former Risborough Park Homestead at 1780 Mickleham Road, Mickleham has been identified as a site of archaeological potential. A detailed investigation into the archaeological potential of this site, as well as the sites of the former Post and Telegraph Offices, church and previous residences as identified on the 1917 and 1938 plans should be undertaken to determine whether these sites should be included in the VHI (refer to Section 0).

The results of the investigation should inform subsequent consultation with Heritage Victoria with regard to potential inclusion of these sites in the VHI. If one or more of these sites are included in the VHI, a Consent to disturb will be required from Heritage Victoria for any works that will impact on a site or place listed on the VHI. However, as noted in Section 0, the *Heritage Act 2017* protects historical archaeological sites regardless of whether they are included in the VHI. If any historical archaeological sites/remains are encountered during the development of the study area, all works must cease and Heritage Victoria contacted prior to works recommencing.

### **Recommendation 4: Dry stone walls**

Dry stone walls and stone lined landscape features provide a direct link to historic rural land use and add to the visual interest and cultural identity of the area. As noted above, there are comparatively few examples of dry stone walls in the Craigieburn West study area relative to other agricultural areas to the north and west of Melbourne. The initial assessment of the dry stone walls within the study area (with the exception of the single-course wall at 1780 Mickleham Road) is that they are of potential local significance.

More extensive cultural heritage assessments should be undertaken for the dry stone walls located at 220 and 250 Olivers Road, Mickleham, with regard for the following best practice principles:

### ***Demolition and Removal –***

- Unless demolition is agreed upon by the responsible authority or consented to as a result of a dry stone wall assessment, dry stone walls in the Study Area should be retained.
- dry stone walls and other basalt features should be assessed by a suitably qualified professional to determine their value.

### ***Subdivision***

- subdivision must have regard to the heritage value of dry stone walls and their original alignments.
- Retain dry stone walls in publicly accessible locations for their place-making value.
- Provide a suitable landscape interface to prevent public access immediately adjacent to the retained walls.

### ***Additions and Alterations***

- A suitably qualified professional must be engaged when reconstructing a section of dry stone wall, creating new openings; and/or constructing new wall ends
- Any repairs to dry stone walls should be made using the same construction technique
- dry stone material from unavoidable losses should be used for the reconstruction of new sections of wall on the land or nearby land, or used for the repair of damaged walls on the land or nearby land.
- Where removed stones are not proposed for wall relocation and reconstruction or maintenance or landscaping, stones should be provided to council for stockpiling and re-use.

### **Recommendation 5: Treelines**

Like dry stone walls, treelines demonstrate past rural land use of the area (refer to Section 8.2.5). These should be assessed to consider the significance as well as the health of the trees, and retained as appropriate to be integrated into surrounding development.

### **Recommendation 6: Implementation of recommendations of the City of Hume Heritage Review**

Consultation with the City of Hume is recommended in relation to a planning scheme amendment to implement the findings of the Hume *Heritage Overlay Review*, prepared by Biosis in 2017. This study recommended changes to the mapped extent of Dunhelen (HO31):

*HO extent should be extended to include the driveway, while the remaining extent can be reduced to include only the homestead, outbuildings and treed yards, excluding adjoining paddocks* (Biosis, 2017: 61).

No changes were recommended to the HO extent or citation for the Mickleham State School No. 1051.

**Recommendation 7: Further work**

Consultation with the City of Hume should be considered in relation to the development of a local heritage planning policy to be included in the Hume Planning Scheme. This policy would typically apply to all places included in the Heritage Overlay and provide specific development guidelines.

**Recommendation 8: Place-making**

Place-making should be based on the following key themes associated with the Craigieburn West Study Area:

**a. Volcanic Plains**

Craigieburn West sits within a volcanic plain, which accounts for the rich volcanic soil and basalt rocks strewn across the area.

**b. Exploring**

Hamilton Hume and William Hovell first came through the area in 1824. Hovell described the view from around Kalkallo, north-east of Craigieburn, to the south towards the bay as ‘...plains, and open forest, which served to give them a more beautiful appearance...never did I behold a more charming and gratifying sight...’<sup>13</sup> Hume and Hovell’s report on their inland expedition inspired John Batman to request permission to move across Bass Strait from Tasmania. Governor Richard Bourke of NSW refused permission but within a few years the shortage of pastureland in Tasmania meant Batman was prepared to ignore the Governor.<sup>14</sup> In May 1835 Batman made his fateful visit to Port Phillip, at which he negotiated a ‘treaty’ with the local indigenous inhabitants and set in place the European occupation.

**c. Agriculture**

Pastoralists of the 1830s and 1840s brought their sheep with them to graze on the open grasslands. James Malcolm was one of the first to arrive and he settled in nearby Kinlochewe and built his homestead Olig (HO33). John Sinclair settled at Mount Ridley and the Brodie brothers, Richard and George, became early settlers and large landowners in the Mickleham and surrounding districts and built Dunhelen House and Barn (HO31) at 1240 Mickleham Road, Greenvale in 1860. Sheep and cattle farming was the most common activity in the study area from the time shortly after the first Europeans came through until the present day. Evidence of farming can be found across the study area such as the remnant post and wire fencing at 1340 Mickleham Road and many other examples throughout the study area. The Study Area’s dairying and agricultural history is most obviously expressed today through the presence of post and rail fences, dry stone walls, dams, tree lines, large paddocks and the wide-open spaces still visible to the north and west of the study area.

**d. Religious places of worship/Diverse Cultures and Religions**

In addition to this agricultural landscape are several expressions of cultural activity that have evolved in recent decades as religious communities belonging to a diversity of ethnic backgrounds have sought to purchase land and establish themselves in places that are affordable and large enough to accommodate their needs and those of their members.

The comparatively high number of churches/temples/places of worship within the study area is understood to be a result of the availability of large and relatively inexpensive properties in this area, as well as the varied

---

<sup>13</sup> D Maloney, *City of Hume Heritage Study: Former Shire of Bulla District*, 1998, vol. 2, p.10

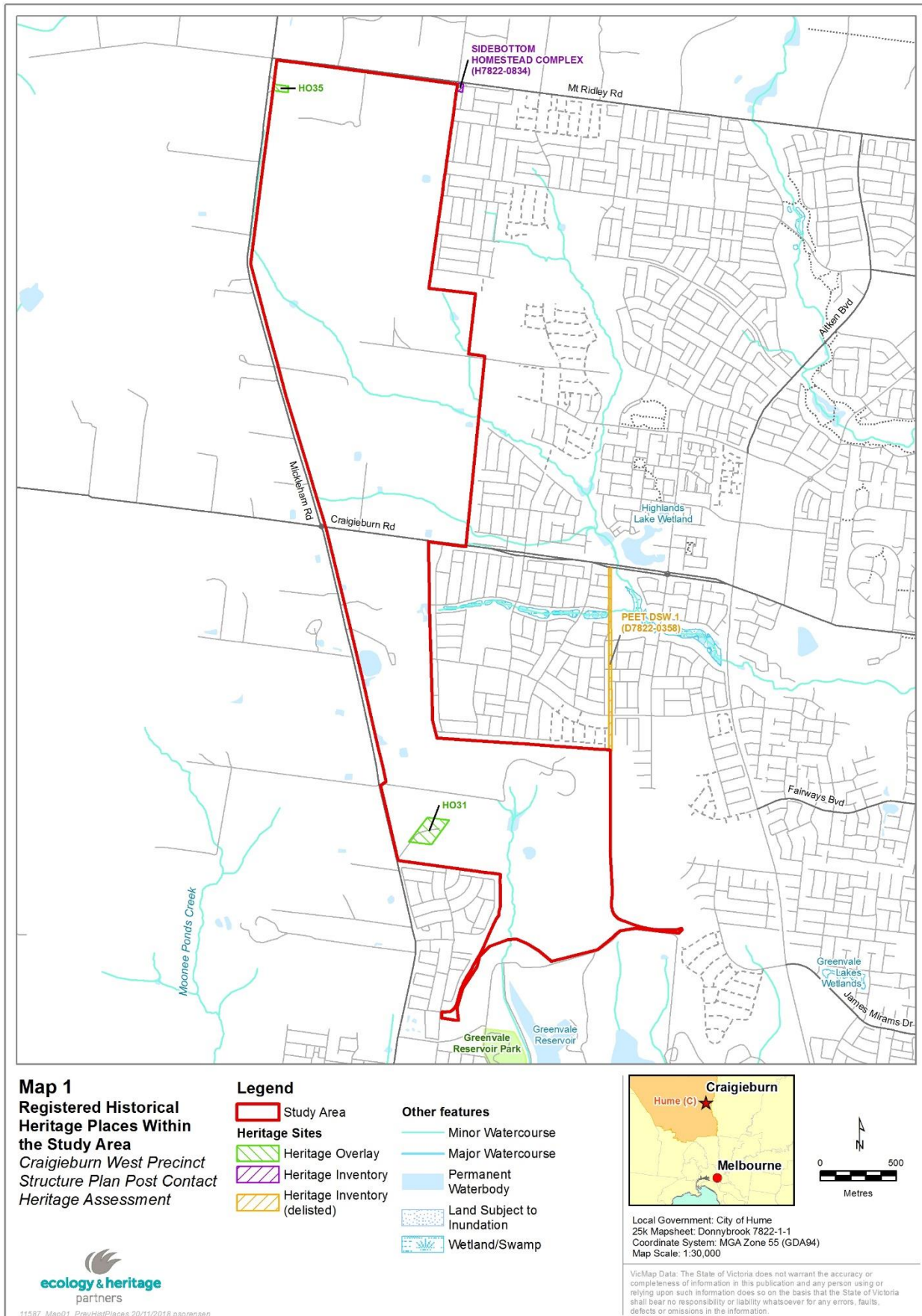
<sup>14</sup> *ibid*, p. 6

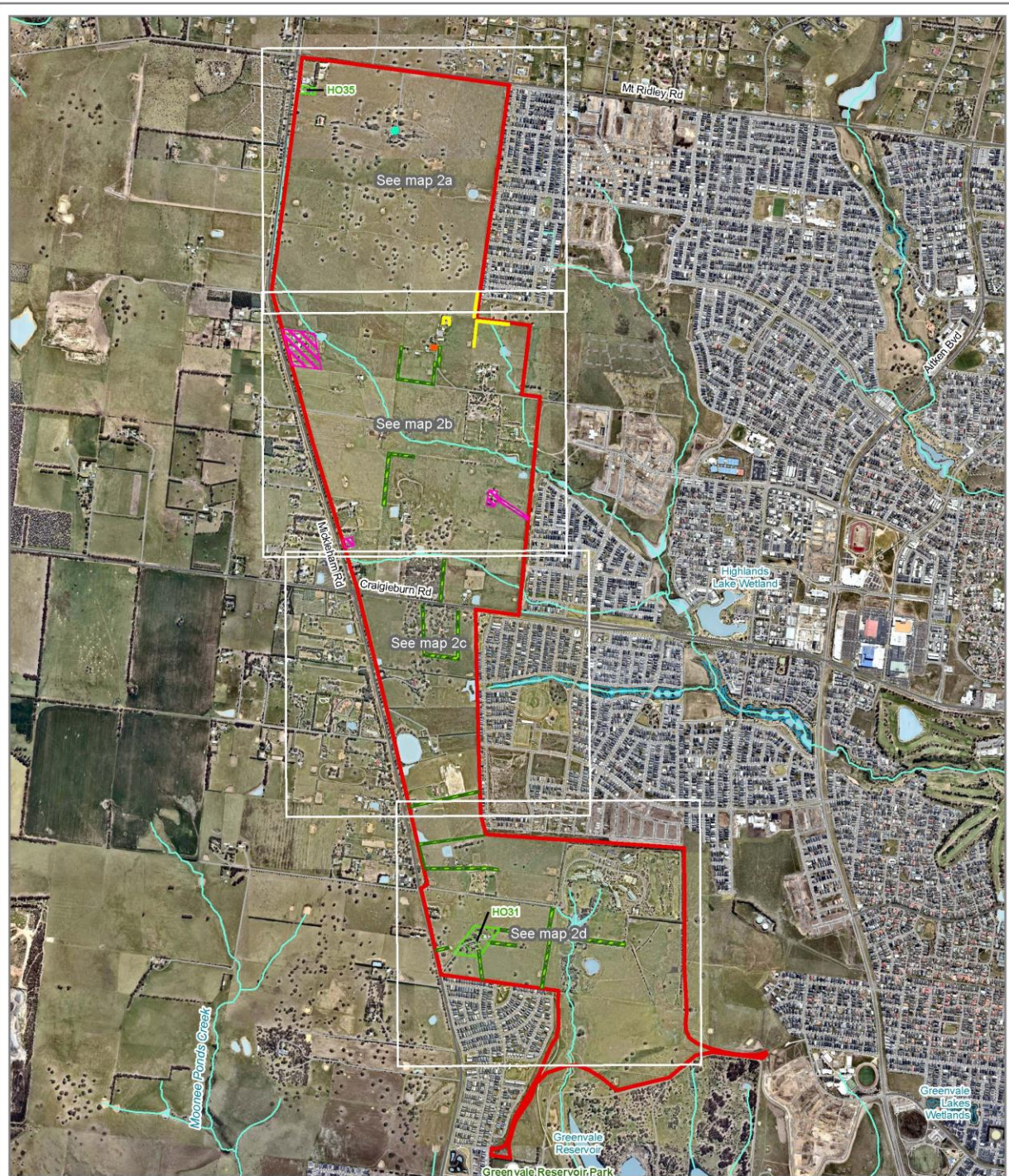
migrant settlement of the surrounding area. These places have been established within the last few decades, although there does appear to have been a church within the study area in the early twentieth century (identified on the 1917 and 1938 plans).

The Buddhist Temple Daham Niketanaya at 1690 Mickleham Road, St Thomas Jacobite Syrian Orthodox Church at 75 Whites Lane, and the Islamic Community Milli Gorus Craigieburn Inc at 1550 Mickleham Road have all developed as significant community institutions providing spiritual and cultural care and teachings for a growing number of Buddhist, Muslim and Asian people living in the Craigieburn area in recent years.

## MAPS

---





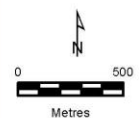
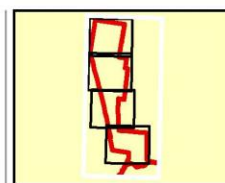
**Map 2 Overview**  
**Heritage Places and**  
**Potential Heritage**  
**Places Within the Study**  
**Area**  
*Craigieburn West Precinct*  
*Structure Plan Post*  
*Contact Heritage*  
*Assessment*

**Legend**

-  Study Area
- Heritage Sites**
-  Heritage Overlay
- Heritage Places and Potential Heritage Places**
-  Dry Stone Walls
-  Place of Worship
-  Potential Heritage Place
-  Potential Historical Archaeological Site
-  Tree Plantation

**Other features**

-  Minor Watercourse
-  Major Watercourse
-  Permanent Waterbody
-  Land Subject to Inundation
-  Wetland/Swamp



Local Government: City of Hume  
25k Mapsheet: Donnybrook 7822-1-1  
Coordinate System: MGA Zone 55 (GDA94)  
Map Scale: 1:29,000

VicMap Data: The State of Victoria does not warrant the accuracy or completeness of information in this publication and any person using or relying upon such information does so on the basis that the State of Victoria shall bear no responsibility or liability whatsoever for any errors, faults, defects or omissions in the information.



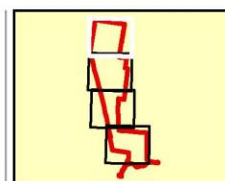
**Map 2a**  
**Heritage Places and Potential Heritage Places Within the Study Area**  
*Craigieburn West Precinct Structure Plan Post Contact Heritage Assessment*

**Legend**

- Study Area
- Heritage Sites**
  - Heritage Overlay
- Heritage Places and Potential Heritage Places**
  - Dry Stone Walls
  - Place of Worship
  - Potential Heritage Place
  - Potential Historical Archaeological Site
  - Tree Plantation

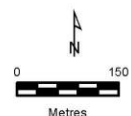
**Other features**

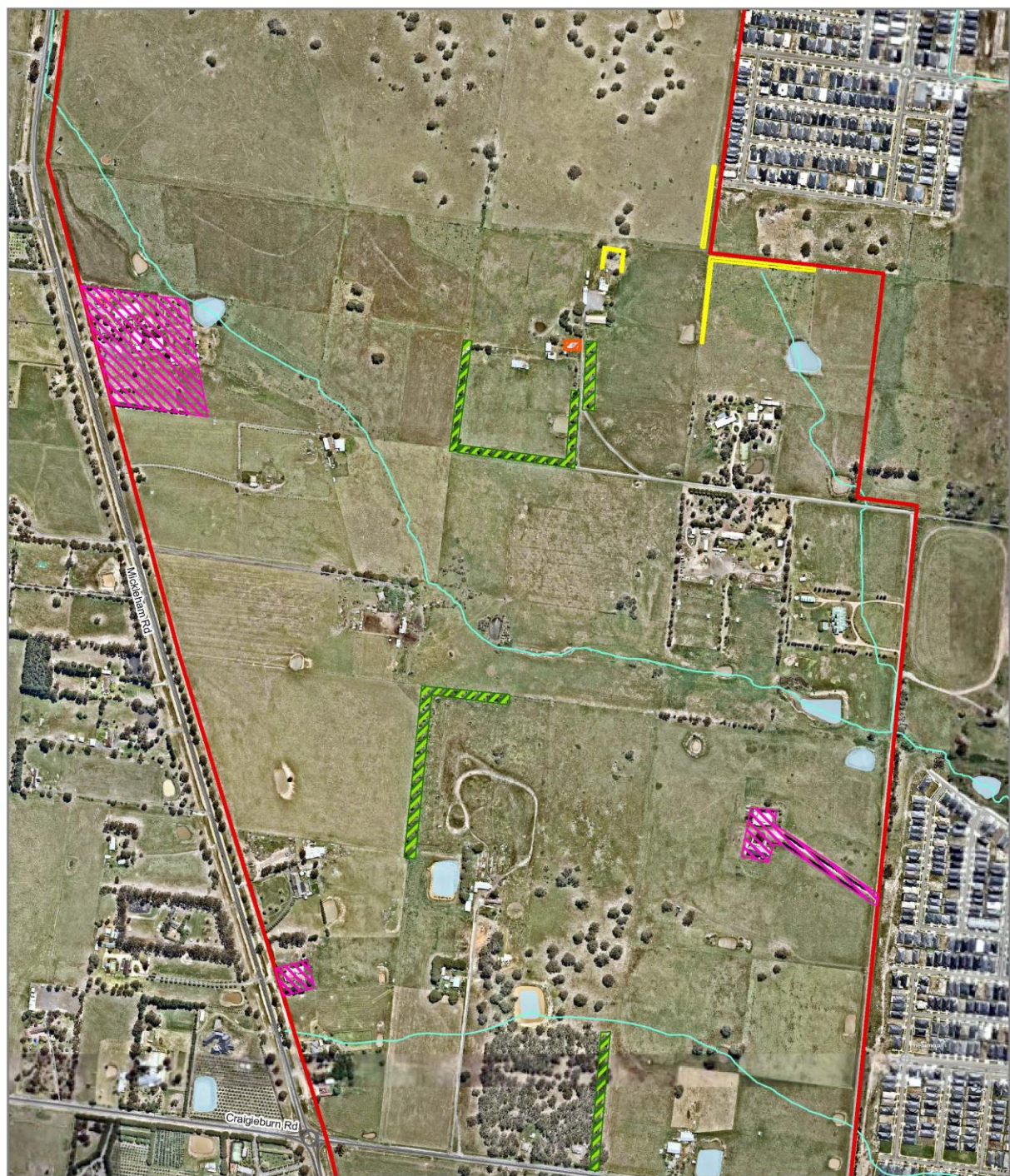
- Minor Watercourse
- Major Watercourse
- Permanent Waterbody
- Land Subject to Inundation
- Wetland/Swamp



Local Government: City of Hume  
25k Mapsheet: Donnybrook 7822-1-1  
Coordinate System: MGA Zone 55 (GDA94)  
Map Scale: 1:9,000

VicMap Data: The State of Victoria does not warrant the accuracy or completeness of information in this publication and any person using or relying upon such information does so on the basis that the State of Victoria shall bear no responsibility or liability whatsoever for any errors, faults, defects or omissions in the information.

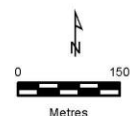
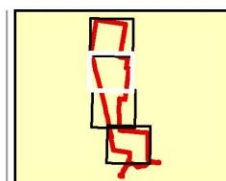




**Map 2b**  
**Heritage Places and Potential Heritage Places Within the Study Area**  
*Craigieburn West Precinct Structure Plan Post Contact Heritage Assessment*

**Legend**

- |  |  |
|--|--|
| <span style="border: 2px solid red; padding: 2px;"> </span> Study Area                   | <span style="color: red;">—</span> Minor Watercourse   |
| <span style="border: 2px dashed green; padding: 2px;"> </span> Heritage Sites            | <span style="color: blue;">—</span> Major Watercourse  |
| <span style="border: 2px dashed green; padding: 2px;"> </span> Heritage Overlay          | <span style="background-color: lightblue; border: 1px solid blue; padding: 2px;"> </span> Permanent Waterbody        |
| <b>Heritage Places and Potential Heritage Places</b>                                     | <span style="background-color: lightblue; border: 1px solid blue; padding: 2px;"> </span> Land Subject to Inundation |
| <span style="border: 2px dashed yellow; padding: 2px;"> </span> Dry Stone Walls          | <span style="background-color: lightblue; border: 1px solid blue; padding: 2px;"> </span> Wetland/Swamp              |
| <span style="border: 2px dashed pink; padding: 2px;"> </span> Place of Worship           |  |
| <span style="border: 2px dashed orange; padding: 2px;"> </span> Potential Heritage Place |  |
| <span style="border: 2px dashed green; padding: 2px;"> </span> Tree Plantation           |  |






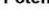


Local Government: City of Hume  
25k Mapsheet: Donnybrook 7822-1-1  
Coordinate System: MGA Zone 55 (GDA94)  
Map Scale: 1:9,000

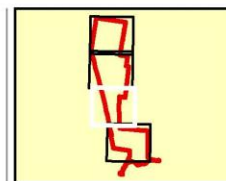
VicMap Data: The State of Victoria does not warrant the accuracy or completeness of information in this publication and any person using or relying upon such information does so on the basis that the State of Victoria shall bear no responsibility or liability whatsoever for any errors, faults, defects or omissions in the information.



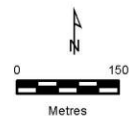
**Map 2c**  
**Heritage Places and Potential Heritage Places Within the Study Area**  
*Craigieburn West Precinct Structure Plan Post Contact Heritage Assessment*

**Legend**

- |   |  |
|---|--|
|  Study Area                                    | <b>Other features</b>  |
|  Heritage Sites                                |  Minor Watercourse          |
|  Heritage Overlay                              |  Major Watercourse          |
|  Heritage Places and Potential Heritage Places |  Permanent Waterbody        |
|  Place of Worship                              |  Land Subject to Inundation |
|  Tree Plantation                               |  Wetland/Swamp              |



Local Government: City of Hume  
25k Mapsheet: Donnybrook 7822-1-1  
Coordinate System: MGA Zone 55 (GDA94)  
Map Scale: 1:9,000



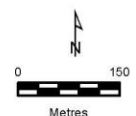
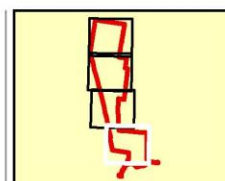
VicMap Data: The State of Victoria does not warrant the accuracy or completeness of information in this publication and any person using or relying upon such information does so on the basis that the State of Victoria shall bear no responsibility or liability whatsoever for any errors, faults, defects or omissions in the information.



**Map 2d**  
**Heritage Places and Potential Heritage Places Within the Study Area**  
*Craigieburn West Precinct Structure Plan Post Contact Heritage Assessment*

**Legend**

- |   |  |
|---|--|
|  Study Area                                    | <b>Other features</b>  |
|  Heritage Sites                                |  Minor Watercourse          |
|  Heritage Overlay                              |  Major Watercourse          |
|  Heritage Places and Potential Heritage Places |  Permanent Waterbody        |
|  Tree Plantation                               |  Land Subject to Inundation |
|   |  Wetland/Swamp              |



Local Government: City of Hume  
25k Mapsheet: Donnybrook 7822-1-1  
Coordinate System: MGA Zone 55 (GDA94)  
Map Scale: 1:9,000

VicMap Data: The State of Victoria does not warrant the accuracy or completeness of information in this publication and any person using or relying upon such information does so on the basis that the State of Victoria shall bear no responsibility or liability whatsoever for any errors, faults, defects or omissions in the information.

## APPENDICES

---

## Appendix 1: Heritage Legislation

### A2.1 *Heritage Act 2017 (State)*

The Victorian *Heritage Act 2017* (the Act) is administered by Heritage Victoria (HV) and is the Victorian Government's key piece of historical heritage legislation.

The Act identifies and protects heritage places and objects that are of significance to the State of Victoria including:

- Historic archaeological sites and artefacts;
- Historic buildings, structures and precincts;
- Gardens, trees and cemeteries;
- Cultural landscapes;
- Shipwrecks and relics; and
- Significant objects.

#### *The Victorian Heritage Register*

The Victorian Heritage Register (VHR) lists the State's most significant heritage places and objects. These can be searched on the Victorian Heritage Database.

The Heritage Council determines what places and objects are included and only those places and objects of outstanding significance are added. The process for adding a place or object is a considered one.

A place or object cannot be added to the Register before the Heritage Council seeks the views of the owner. If a heritage place or object is recommended to the Register, then owners are given a report that includes a statement of cultural heritage significance, a proposed extent of registration, and any proposed activities that may not require a permit.

A heritage object can include furniture, shipwreck relics, archaeological artefacts, equipment, transport vehicles, and articles of everyday use that contribute to an understanding of Victoria's history. Objects can be registered in association with heritage places, or in their own right.

#### *The Victorian Heritage Inventory*

Under Section 118 of the *Heritage Act 2017*, the Victorian Heritage Inventory (VHI) records all archaeological sites other than any archaeological sites which are determined by the Executive Director to have low archaeological value and all approved sites of archaeological value.

Under Section 123 of the *Heritage Act 2017* it is an offence to damage or disturb an archaeological site or relic, irrespective of whether it is listed on the Heritage Inventory or Heritage Register.

Under Section 124 of the *Heritage Act 2017* a Consent from Heritage Victoria is required if a person wishes to:

- a) to excavate or uncover a site recorded in the Heritage Inventory or an archaeological site which is not recorded in the Heritage Inventory; or

- b) to damage or disturb a site recorded in the Heritage Inventory or an archaeological site which is not recorded in the Heritage Inventory; or
- c) to damage or disturb an archaeological artefact, including for the purposes of study, conservation or exhibition; or
- d) to possess an archaeological artefact for the purposes of sale; or
- e) to buy or sell an archaeological artefact

Any application for a consent to the Executive Director must be accompanied by the prescribed fee. Various classes of works apply to the application fees.

Up until late 2009, Heritage Victoria had a 'D' classification for places that are considered to have low historical or scientific significance. These sites are listed on the Victorian Heritage Inventory but are not subject to statutory protection, therefore there is no requirement to obtain a Consent to Disturb or destroy these sites. Heritage Victoria has requested that a letter be sent to them informing them if 'D' listed sites or places are destroyed to maintain records of these destroyed sites.

#### **A2.2 *Planning and Environment Act 1987 (State)***

All municipalities in Victoria are covered by land use planning controls which are prepared and administered by State and local government authorities. The legislation governing such controls is the *Planning and Environment Act 1987*. Places of significance to a locality can be listed on a local planning scheme and protected by a Heritage Overlay (or other overlay where appropriate). Places of Aboriginal cultural heritage significance are not often included on local government planning schemes.

#### **A2.3 *Environment Protection and Biodiversity Conservation Act 1999 (Commonwealth)***

The *Environment Protection and Biodiversity Conservation Act 1999* (EPBC Act) provides a national framework for the protection of heritage and the environment and the conservation of biodiversity. The EPBC Act is administered by the Australian Government Department of Environment and Energy (DoEE). The Australian Heritage Council assesses whether or not a nominated place is appropriate for listing on either the National or Commonwealth Heritage Lists and makes a recommendation to the Minister on that basis. The Minister for the Environment, Water, Heritage and the Arts makes the final decision on listing. DoE also administers the Register of the National Estate.

The objectives of the EPBC Act are:

- To provide for the protection of the environment, especially those aspects of the environment that are matters of national environmental significance;
- To promote ecologically sustainable development through the conservation and ecologically sustainable use of natural resources;
- To promote the conservation of biodiversity;
- To provide for the protection and conservation of heritage;
- To promote a cooperative approach to the protection and management of the environment involving governments, the community, land-holders and indigenous peoples;

- To assist in the cooperative implementation of Australia's international environmental responsibilities;
- To recognise the role of indigenous people in the conservation and ecologically sustainable use of Australia's biodiversity; and
- To promote the use of indigenous peoples' knowledge of biodiversity with the involvement of, and in cooperation with, the owners of the knowledge.

## Appendix 2: Significance Assessment

### A4.1. The ICOMOS Burra Charter

The standard for determining significance of places is derived from an international formula developed by ICOMOS (International Council on Monuments and Sites). In Australia, the Burra Charter has been developed by ICOMOS which is a Charter for the Conservation of Cultural Significance (Australia ICOMOS 1999).

The Burra Charter defines cultural significance as “aesthetic, historic, scientific, social or spiritual value for past, present or future generations” (Australia ICOMOS 1999: Section 1.2). Cultural significance is a concept which helps in estimating the value of places. The Burra Charter Cultural Significance Guidelines definitions of the values implicit in assessing cultural significance are as follows (Australia ICOMOS 1999):

**Aesthetic value:** Aesthetic value includes aspects of sensory perception for which criteria can and should be stated. Such criteria may include consideration of the form, scale, colour, texture and material of the fabric; the smells and sounds associated with its place and use.

**Historic value:** historic value encompasses the history of aesthetics, science and society, and therefore to a large extent underlies all the terms set out in this section.

A place may have historic value because it has influenced, or has been influenced by, an historic figure, event, phase or activity. It may also have historic value as the site of an important event. For any given place the significance will be greater where evidence of the association or event survives in situ, or where the settings are substantially intact, than where it has been changed or evidence does not survive. However, some events or associations may be so important that the place retains significance regardless of subsequent treatment.

**Scientific value:** The scientific or research value of a place will depend upon the importance of the data involved, on its rarity, quality or representativeness, and on the degree to which the place may contribute further substantial information.

**Social value:** Social value embraces the qualities for which a place has become a focus of spiritual, political, national or other cultural sentiment to a majority or minority group.

### National Historic Themes

It is noted that when assessing historic values that the use of historic themes is of benefit. Historic themes are used by heritage professionals to assist in understanding the meanings and connections that historic places may have in addition to the physical fabric of a place. Themes can help explain how particular elements of a place are significant because of their ability to illustrate important aspects of its history (Australian Heritage Commission 2001). The nine theme groups that are most commonly used nationally are:

Theme 1	Tracing the evolution of the Australian environment
Theme 2	Peopling Australia
Theme 3	Developing Local, Regional and National economies
Theme 4	Building settlements, towns and cities
Theme 5	Working
Theme 6	Educating
Theme 7	Governing
Theme 8	Developing Australia's cultural life
Theme 9	Marking the phases of life

These theme groups are further expanded into more focussed sub-themes which will not be expanded on here. The themes are intended to be non-hierarchical and a historic place may have a number of themes, which reflects how we look at the past, allowing for an integrated, diverse and complex human experience (Australian Heritage Commission 2001).

#### **A4.2. The *Heritage Act 2017* Criteria**

The *Heritage Act 2017* defines eight criteria against which cultural heritage significance can be assessed. These criteria are used to assist in determining whether places of potential State significance should be included in the Heritage Register. They are as follows:

Criterion A	The historical importance, association with or relationship to Victoria's history;
Criterion B	Good design or aesthetic characteristics;
Criterion C	Scientific or technical innovations or achievements;
Criterion D	Social or cultural associations
Criterion E	Potential to educate, illustrate or provide further scientific investigation in relation to Victoria's cultural heritage;
Criterion F	Importance in exhibiting a richness, diversity or unusual integration of features;
Criterion G	Rarity or uniqueness of a place or object; and
Criterion H	The representative nature of a place or object as part of a class or type of places or objects.

In addition it is appropriate when assessing the significance of a site in Victoria to consider whether it is of Local, Regional or State (or potentially National) significance.

#### **A4.3. Scientific Significance**

Scientific significance of a heritage place (particularly archaeological sites) is also assessed in Victoria using a commonly accepted formula developed by Bowdler (1981) and Sullivan and Bowdler (1984). These are relative estimates of significance based on the current knowledge available about sites or places in a region. The assessment uses three criteria; site contents, site condition and representativeness.

##### **Site Contents Rating**

- 1 No cultural materials remaining.
- 2 Site contains a small number (e.g. 0-10 artefacts) or limited range of cultural materials with no evident stratification.
- 3 Site contains:
  - a. A larger number, but limited range of cultural materials; and/or
  - b. Some intact stratified deposit.
- 4 Site contains:
  - a. A large number and diverse range of cultural materials; and/or
  - b. Largely intact stratified deposit; and/or
  - c. Surface spatial patterning of cultural materials that still reflect the way in which the cultural materials were laid down.

##### **Site Condition Rating**

- 0 Site destroyed.
- 1 Site in a deteriorated condition with a high degree of disturbance but with some cultural materials remaining.
- 2 Site in a fair to good condition, but with some disturbance.
- 3 Site in an excellent condition with little or no disturbance. For surface artefact scatters this may mean that the spatial patterning of cultural material still reflects the way in which the cultural materials were laid.

##### **Representativeness**

Representativeness refers to the regional distribution of a site type. It is assessed on whether the site type is common, occasional or rare within a given region. Current knowledge on the number of and distribution of

archaeological sites in a region can change according depending on the extent of previous archaeological investigation.

The assessment of representativeness also takes into account the contents and condition of a particular site. An example is that in any region, there may be a limited number of sites of a particular type, which have been subject to minimal disturbance. These sorts of undisturbed sites (containing in situ deposits) would therefore be given a high significance rating for representativeness.

The representativeness ratings used for archaeological sites are:

- 1 Common occurrence
- 2 Occasional occurrence
- 3 Rare occurrence

#### **Overall Scientific Significance Rating**

An overall scientific significance rating is assigned to the site based on a cumulative score from the assessment. This results in one of the following ratings being assigned for scientific significance:

- 1-3 Low
- 4-6 Moderate
- 7-9 High

## REFERENCES

---

- Australia ICOMOS, 1999. *Burra Charter: Charter for Places of Cultural Significance*. Australia ICOMOS, Canberra.
- Australian Bureau of Statistics (ABS) 2017. *Craigieburn (State Suburb). 2016 Census QuickStats*. [http://www.censusdata.abs.gov.au/census\\_services/getproduct/census/2016/quickstat/SSC20657](http://www.censusdata.abs.gov.au/census_services/getproduct/census/2016/quickstat/SSC20657) accessed 16 August 2017.
- Australian Dictionary of Biography, 2018. <http://adb.anu.edu.au/>. Accessed 15 March 2018.
- Bailliere, F. 1865. *Victorian Gazetteer and Road Guide*. F.F. Bailliere, Melbourne.
- Biosis, 2017. *Heritage Overlay Review, Hume City Council*.
- Craigieburn Historical Interest Group Inc. (CHIG Inc.) <http://chig.asn.au/martha-saunders-do-thomas-saunders-of-risborough-park-mickleham/> accessed 02 December 2018.
- Cultural Heritage Management Group, 2016. *Lindum Vale Dry Stone Wall Historic Heritage Assessment*.
- DELWP, 2018a. Planning Practice Note 1, Applying the Heritage Overlay. [https://www.heritage.vic.gov.au/data/assets/pdf\\_file/0018/55530/Applying-the-Heritage-Overlay-Practice-Note.pdf](https://www.heritage.vic.gov.au/data/assets/pdf_file/0018/55530/Applying-the-Heritage-Overlay-Practice-Note.pdf) accessed 04 December 2018.
- DELWP, 2018b. Assessment criteria, <https://www.heritage.vic.gov.au/heritage-registration-and-certificates/registration/assessment-criteria> accessed 04 December 2018.
- DELWP, 2018c. *Planning Schemes*. <http://planningschemes.dpcd.vic.gov.au>, accessed 14 November 2018.
- Department of the Environment and Energy (DoEE), 2018. Australian Heritage Places Inventory. <http://www.heritage.gov.au/cgi-bin/ahpi/>, accessed 14 November 2018.
- DoEE, Yearb. *Protected Matters Search Tool*. <http://www.environment.gov.au/webgis-framework/apps/pmst/pmst.jsf>, 14 November 2018.
- Ford O and Vines G et al., 2000. *Hume Heritage Study: Former Broadmeadows Area and Environs*, Volumes 1 & 2.
- Growth Areas Authority (GAA), 2010. *Craigieburn R2 Precinct Structure Plan*.
- Growth Areas Authority (GAA), 2011. *Greenvale North R1 Precinct Structure Plan*.
- Hume Libraries 2017. <https://www.humelibraries.vic.gov.au> accessed 08 August 2017.
- Hume City Council (HCC), 2018. [https://www.hume.vic.gov.au/Building\\_Planning/Strategic\\_Planning/Growth\\_Area\\_Planning](https://www.hume.vic.gov.au/Building_Planning/Strategic_Planning/Growth_Area_Planning) accessed 03 December 2018.
- Land Victoria Historic Aerial Photos.
- Moloney D. and Johnson V., 1998. *City of Hume Heritage Study: Former Shire of Bulla District*, Volumes 1 -6.
- National Trusts of Australia Register of Significant Trees, <http://trusttrees.org.au/> accessed 24 January 2019.

Payne, J. 1980. *Donnybrook-Kalkallo 1855-1980*. Back to Kalkallo Committee, Kalkallo.

Spencer, B., 2014. 'Trees on Farms – Values and management of paddock trees in the Goulburn Broken Catchment', University of Melbourne Research Project, Masters of Environment.

State Library of Victoria Maps Collection.

Victorian Planning Authority (VPA), 2017. *Lindum Vale (Mt Ridley West) Precinct Structure Plan*.

### **Newspapers**

*The Age*