



PSP2.0

Officer South (Employment)

BUNURONG COUNTRY

Infrastructure Contributions Plan

NOVEMBER 2024

ACKNOWLEDGMENT OF THE TRADITIONAL OWNERS

The Victorian Planning Authority proudly acknowledges Victoria's Aboriginal community and their rich culture and pays respect to their Elders past and present.

We acknowledge Aboriginal people as Australia's first peoples and as the Traditional Owners and custodians of the land and water on which we rely.

We recognise and value the ongoing contribution of Aboriginal people and communities to Victorian life and how this enriches us.

We embrace the spirit of reconciliation, working towards the equality of outcomes and ensuring an equal voice.

The Officer South (Employment) Precinct is located on the traditional lands of the Bunurong People. The Bunurong People are represented by the Bunurong Land Council Aboriginal Corporation (BLCAC).

We acknowledge the Bunurong People as the Aboriginal Traditional Owners of their unceded Country. We acknowledge their ongoing connection to this land, and we pay our respects to their Elders past and present.

'Cardinia' has been identified as the anglicised interpretation of an eastern Kulin term roughly translated to "looking east from the creek" (BCLAC)

We thank BLCAC for their engagement throughout this project.

ACCESSIBILITY

The Victorian Planning Authority is committed to ensuring that all persons, including those with disabilities, can access information about our key planning projects, are able to participate in community engagement and consultation activities, and have access to our premises.

This document has been optimised to be compatible with screen readers. We welcome your feedback especially where you feel we are not compliant or could provide better accessibility. If you would like us to send you a printed or electronic copy of this or any VPA publication, please contact us at accessibility@vpa.vic.gov.au

COPYRIGHT NOTICE

© Victorian Planning Authority, 2024.

This planning report was developed by the Victorian Planning Authority (VPA) on behalf of the Victorian Government.

Any projections are based on reasonable assumptions at the time of publication but should not be relied upon without first seeking appropriate expert advice. Although every effort has been made to ensure that the information in this document is factually correct at the time of publication, the VPA does not warrant the accuracy, completeness or relevance of the information. Any person using or relying upon this document does so on the basis that the State of Victoria shall bear no responsibility or liability whatsoever for any errors, faults, defects or omissions in the information.

CONTENTS

1.0	SUMMARY	1
1.1	Monetary component	1
1.2	Land component	1
2.0	INTRODUCTION	4
2.1	Document structure	4
2.2	Planning and Environment Act 1987	4
2.3	Strategic planning and justification	5
2.4	Timeframe and plan review period	5
2.5	Area to which this infrastructure contributions plan applies (ICP plan area)	5
3.0	MONETARY COMPONENT PROJECT IDENTIFICATION	7
3.1	Cost apportionment and related infrastructure agreements	7
3.2	Transport construction projects	9
3.3	Community and recreation construction projects	14
3.4	Project staging	14
4.0	PUBLIC PURPOSE LAND PROVISION	16
4.1	Inner and outer public purpose land	16
	4.1.1 Public open space contributions	17
4.2	Land component	18
5.0	CONTRIBUTIONS & ADMINISTRATION	23
5.1	Collecting agency	23
5.2	Development agency	23
5.3	Net developable area	23
5.4	Contribution land	23
5.5	Levy rates and classes of development	24
5.6	Estimated value of public purpose land	24
5.7	Payment of contributions	24
	5.7.1 Timing of payment of monetary component & land equalisation amounts	24
	5.7.2 Inner public purpose land	25
5.8	Payment of land credit amounts	25
5.9	Development exempt from contributions	25
	5.9.1 Schools	25
	5.9.2 Housing	26
5.10	Works in kind	26
	5.10.1 Interim and temporary works	26
5.11	Works in kind reimbursement	26
5.12	Funds administration	26
5.13	Annual indexation of standard levy rates	27
5.14	Adjustment of land credit amounts	27
5.15	Adjustment of land equalisation amounts	27
6.0	APPENDICES	28
Appendix 1	Definitions	28
Appendix 2	Land use budget	29
Appendix 3	Designs	34

PLANS

Plan 1	ICP Plan Area and Classes of Development	6
Plan 2	Monetary Component Standard Levy Transport Projects	8
Plan 3	Monetary Component Supplementary Levy Transport Projects	11
Plan 4	Standard Levy Community and Recreation Construction Projects	13
Plan 5	Public Land Projects	15
Plan 6	Land Use Budget	29

TABLES

Table 1	Monetary component ICP levy summary	1
Table 2	ICP land contribution percentage	1
Table 3	Land credit and equalisation amounts	2
Table 4	Development classes & areas	5
Table 5	Standard levy transport construction projects	10
Table 6	Supplementary levy transport construction projects	12
Table 7	Standard levy community & recreation construction projects	14
Table 8	Inner public purpose land	16
Table 9	Public purposes land summary	18
Table 10	ICP land equalisation rate	19
Table 11	Public purpose land credit & equalisation amounts	20
Table 12	Classes of development & standard levy rates	24
Table 13	Classes of development & supplementary levy rates	24
Table 14	Classes of development & total monetary levy rates	24
Table 15	Indices	27
Table 16	Summary land use budget	30
Table 17	Parcel specific land use budget	31

1.0 SUMMARY

1.1 Monetary component

The following table summarises the monetary component of the infrastructure contribution imposed under this infrastructure contributions plan (ICP) for each class of development.

The monetary component consists of a **standard and supplementary levy** that is calculated by multiplying the net developable area (NDA) by the total levy rate.

Details of the infrastructure construction projects and plan preparation costs that will be funded by the monetary component and their apportionment are provided in Section 3 of this ICP.

Details of the standard levy rates are provided in Section 5 of this ICP.

Table 1 Monetary component ICP levy summary

CLASS OF DEVELOPMENT	NET DEVELOPABLE AREA (HECTARES)	LEVY RATE	LEVY TO BE PAID
STANDARD LEVY			
Residential development	43.82	\$256,650.00	\$11,246,396.35
Commercial and industrial	649.34	\$147,562.00	\$95,817,941.27
Subtotal	693.16		\$107,064,337.62
SUPPLEMENTARY LEVY			
Residential	43.82	\$117,632.14	\$5,154,637.27
Commercial and industrial	649.34	\$117,632.14	\$76,383,278.64
Subtotal	693.16		\$81,537,915.91
TOTAL LEVY			
Residential	43.82	\$374,282.14	\$16,401,033.63
Commercial and industrial	649.34	\$265,194.14	\$172,201,219.90
Total	693.16		\$188,602,253.53

Note: Minor discrepancies in numbers due to rounding.

1.2 Land component

The following table specifies the ICP land contribution percentage for each class of development.

The ICP land contribution percentage for a class of development is calculated by dividing the total area of public purpose land specified in this ICP that is attributable to that class of development by the total area of the contribution land in the ICP plan area of this ICP in that class of development (refer [Table 9 Public purposes land summary](#) for more detail).

Details of the public purposes that this land will be used and developed for, is specified in [Section 4.0](#) of this ICP.

Table 2 ICP land contribution percentage

CLASS OF DEVELOPMENT	ICP LAND CONTRIBUTION
Residential	23.16%
Commercial and industrial	5.68%

The land component of the infrastructure contribution in relation to a parcel of land in the ICP plan area is:

- any inner public purpose land that forms part of the parcel of land, and
- any land equalisation amount in relation to the parcel of land.

[Table 3 Land credit and equalisation amounts](#) specifies for each parcel of land in the ICP plan area:

- the area of inner public purpose land to be provided by the parcel
- land credit amount or the land equalisation amount in relation to the parcel

Note: An application to use or develop OS-04 in connection with its current use as a Freeway Service Centre is exempt from infrastructure contribution levies.

Table 3 Land credit and equalisation amounts

PARCEL ID	INNER PUBLIC PURPOSE LAND (HA)	LAND CREDIT AMOUNT (TOTAL \$)	LAND EQUALISATION AMOUNT (TOTAL \$)	LAND EQUALISATION AMOUNT (\$ PER NDHA)
OS-01	–	–	–	
OS-02	–	–	\$1,489,632.32	\$192,276.39
OS-03	–	–	\$1,599,970.96	\$192,276.39
OS-04	–	–	–	
OS-05	–	–	\$578,202.37	\$192,276.39
OS-06	–	–	\$192,227.65	\$192,276.39
OS-07	0.77	–	\$1,530,854.99	\$71,139.87
OS-08	–	–	\$2,036,721.89	\$192,276.39
OS-09	–	–	\$233,046.06	\$192,276.39
OS-10	–	–	\$375,997.88	\$192,276.39
OS-11	1.79	–	\$7,573,883.15	\$436,042.35
OS-12	1.99	\$648,634.98	–	–
OS-13	–	–	\$155,585.52	\$192,276.39
OS-14	0.47	–	\$716,607.93	\$59,716.03
OS-15	0.30	–	\$932,706.98	\$91,981.60
OS-16	1.22	\$4,673,873.00	–	–
OS-17	–	–	\$147,505.99	\$192,276.39
OS-18	–	–	\$2,321,292.84	\$192,276.39
OS-19	–	–	\$192,209.16	\$192,276.39
OS-20	0.16	\$438,244.70	–	–
OS-21	0.31	–	\$1,029,668.73	\$94,954.72
OS-22	0.36	–	\$651,099.45	\$66,789.90
OS-23	0.16	–	\$1,259,337.55	\$133,454.75
OS-24	0.43	\$318,199.99	–	–
OS-25	3.22	–	\$5,821,275.67	\$273,113.46
OS-26	0.06	\$179,217.10	–	–
OS-28	4.54	\$1,480,032.05	–	–
OS-29	0.07	–	\$83,681.88	\$51,195.78
OS-30E	2.51	\$1,819,981.28	–	–
OS-30R	3.91	\$5,769,038.85	–	–
OS-31E	2.32	\$4,961,631.44	–	–
OS-31R	6.40	\$15,166,274.01	–	–
OS-32	1.25	–	\$13,393,146.27	\$146,020.75
OS-33	0.07	\$235,811.97	–	–
OS-34	0.19	\$377,096.56	–	–
OS-35	–	–	\$3,987,357.68	\$192,276.39

PARCEL ID	INNER PUBLIC PURPOSE LAND (HA)	LAND CREDIT AMOUNT (TOTAL \$)	LAND EQUALISATION AMOUNT (TOTAL \$)	LAND EQUALISATION AMOUNT (\$ PER NDHA)
OS-36	8.65	\$12,432,097.64	–	–
OS-37	2.88	\$2,965,837.45	–	–
OS-38	–	–	–	–
OS-39	4.31	\$10,752,549.14	–	–
OS-40	1.79	\$5,766,124.04	–	–
OS-41	0.53	–	\$2,585,142.01	\$113,068.81
OS-42	–	–	\$324,025.73	\$192,276.39
OS-43	–	–	\$896,293.39	\$192,276.39
OS-44	1.00	–	\$3,367,910.06	\$95,852.26
OS-45	–	–	\$4,670,591.55	\$192,276.39
OS-46	–	–	\$3,254,548.05	\$192,276.39
OS-47	–	–	\$1,202,363.05	\$192,276.39
OS-48	1.00	–	\$4,732,960.57	\$112,054.00
OS-49	–	–	–	–
OS-50	–	–	–	–
OS-51	–	–	–	–
OS-52	–	–	–	–
OS-53	–	–	–	–
OS-54	–	–	–	–
OS-55	–	–	–	–
OS-56	–	–	–	–
OS-57	–	–	–	–
OS-58	–	–	–	–
OS-59	–	–	–	–
OS-60	–	–	–	–
OS-R1	–	–	\$524,170.11	\$192,276.39
OS-R2	–	–	\$124,626.77	\$192,276.39
OS-R3	–	–	–	–
OS-R4	–	–	–	–
OS-R5	–	–	–	–
OS-R6	–	–	–	–
TOTAL	52.67	\$67,984,644.21	\$67,984,644.21	–

2.0 INTRODUCTION

The *Officer South (Employment) Infrastructure Contributions Plan* ('the ICP') has been prepared by the Victorian Planning Authority (VPA) with the assistance of Cardinia Shire Council, service authorities and other stakeholders.

This ICP has been incorporated in the *Cardinia Planning Scheme* for the purposes of imposing infrastructure contributions on development proponents to contribute to the provision of works, services or facilities and the provision of land for public purposes.

The infrastructure contribution imposed under this ICP in relation to the development of land in the ICP plan area consists of a monetary component and a land component.

The ICP:

- Establishes the statutory mechanism for development proponents to make a monetary contribution towards the cost of infrastructure projects identified in *Officer South (Employment) Precinct Structure Plan* (PSP)
- Establishes the statutory mechanism for development proponents to provide land to be used and developed for the public purposes identified in the Officer South (Employment) PSP
- Lists the individual infrastructure projects identified in the Officer South (Employment) PSP, and
- Has been prepared in accordance with Part 3AB of the *Planning and Environment Act 1987* ('the Act'), the *Ministerial Direction on the Preparation and Content of Infrastructure Contributions Plans* (February 2021) and the *Infrastructure Contributions Plan Guidelines*.

2.1 Document structure

This document comprises the sections described below.

Section 1.0 and Section 2.0

- Summarises the key details of this ICP
- Describes the strategic basis for this ICP

Section 3.0

- Identifies the monetary component projects to be contributed to by this ICP

Section 4.0

- Identifies the public purpose land provision for this ICP

Section 5.0

- Discusses the administration and implementation of this ICP

Section 6.0

- Provides additional detailed information

2.2 *Planning and Environment Act 1987*

This ICP has been prepared in accordance with Part 3AB of the Act, it is consistent with the Minister for Planning's *Ministerial Direction on the Preparation and Content of Infrastructure Contributions Plans* (February 2021) made under section 46GJ of the Act.

In accordance with section 46GG of the Act, this ICP has been incorporated in the Cardinia Planning Scheme for the purposes of imposing infrastructure contributions to fund the provision of works, services or facilities and the provision of land for public purposes. This ICP is implemented in the *Cardinia Planning Scheme* through Schedule 1 of Clause 45.11 to the Infrastructure Contributions Overlay and is an incorporated document under Clause 72.04.

2.3 Strategic planning and justification

This ICP has been prepared in conjunction with the Officer South (Employment) PSP.

The Officer South (Employment) PSP sets out the vision for how land should be developed, illustrates the Place-based Plan and describes the outcomes to be achieved by the future development. The PSP also identifies the infrastructure projects required as well as providing the rationale and justification for the infrastructure items. The background reports for the PSP provide an overview of the planning process for the Officer South (Employment) ICP area.

The PSP has confirmed:

- All road, intersection and bridge projects required to service the new community
- The sporting reserves, local parks, schools and community facilities required to service the new community
- The public purpose land required for the above, and
- The parcel specific land budget detailing the encumbrances, the net developable area (NDA) and the contribution land.

The VPA as planning authority has incurred costs associated with preparing the PSP, ICP, Planning Scheme Ordinances and other documents associated with the preparation of the amendment. These costs are made up of:

- VPA staffing costs, and
- External costs associated with preparation of background technical reports, expert advice and Standing Advisory Committee expenses.

A proportion of these costs, not already recovered via other mechanisms such as up-front third party funding, will be recovered via this ICP as allowed for within and in accordance with the Act and the *Ministerial Direction on The Preparation and Content of Development Contributions Plans* (February 2021).

2.4 Timeframe and plan review period

This ICP adopts a long-term outlook for development. It considers planned future development in the area. This ICP commences on the date of incorporation into the *Cardinia Planning Scheme*. This ICP will end when development within the ICP area is complete, which is projected to be 25 years after gazettal, or when this ICP is removed from the *Cardinia Planning Scheme*.

This ICP is expected to be reviewed and updated every five years (or more frequently if required). This review may result in minor changes or have no changes at all. Alternatively, this may require an amendment to the *Cardinia Planning Scheme* to replace this document with an alternative, revised document.

2.5 Area to which this infrastructure contributions plan applies (ICP plan area)

This ICP plan area applies to 725.40 total hectares of land as shown in [Plan 1 ICP Plan Area and Classes of Development](#).

The classes of development of land in relation to which an infrastructure contribution is to be imposed under this plan are 'residential' and 'commercial and industrial'.

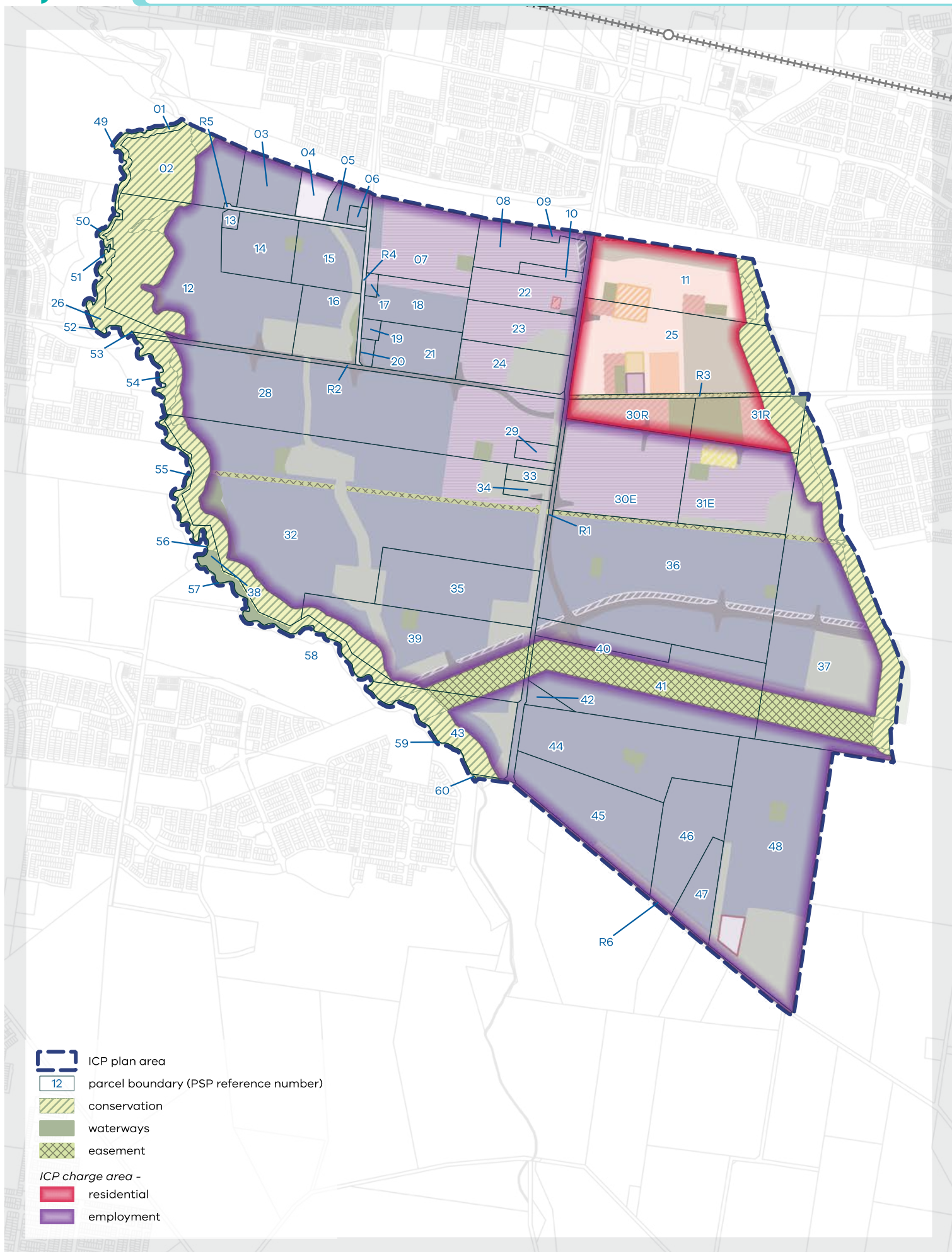
The classes of development are identified in [Plan 1](#). The NDA and contribution land for each class of development are summarised in [Table 4 Development classes and areas](#).

Table 4 Development classes and areas

CLASS OF DEVELOPMENT	NET DEVELOPABLE AREA (HECTARES)	CONTRIBUTION LAND (HECTARES)
Residential	43.82	59.14
Commercial and Industrial	649.34	686.69
Total for ICP area	693.16	745.83

Notes:

- Discrepancy in numbers due to rounding of decimal point. Table 17 takes precedence.
- The monetary component of the infrastructure contribution is payable on the NDA.
- The land component of the infrastructure contribution is calculated based on the contribution land.



3.0 MONETARY COMPONENT PROJECT IDENTIFICATION

The strategic need for infrastructure included in this ICP has been determined, and been subject to consultation, as part of the preparation of the Officer South (Employment) PSP.

Items can only be included in an ICP if they are consistent with the Allowable Items listed in the *Ministerial Direction on the Preparation and Content of Infrastructure Contributions Plans* (February 2021). Only items listed in this ICP can be contributed to by the monetary component (standard levy) of the infrastructure contribution imposed under this ICP. Infrastructure not listed must be funded via other funding mechanisms.

The monetary component will contribute towards two types of infrastructure projects (refer to [Plan 2 Monetary Component Standard Levy Transport Projects](#), [Plan 3 Monetary Component Supplementary Levy Transport Projects](#) and [Plan 4 Standard Levy Community and Recreation Construction Projects](#), and [Table 5 Standard levy transport construction projects](#), [Table 6 Supplementary levy transport construction projects](#) and [Table 7 Standard levy community & recreation construction projects](#)):

- Transport construction
- Community and recreation construction

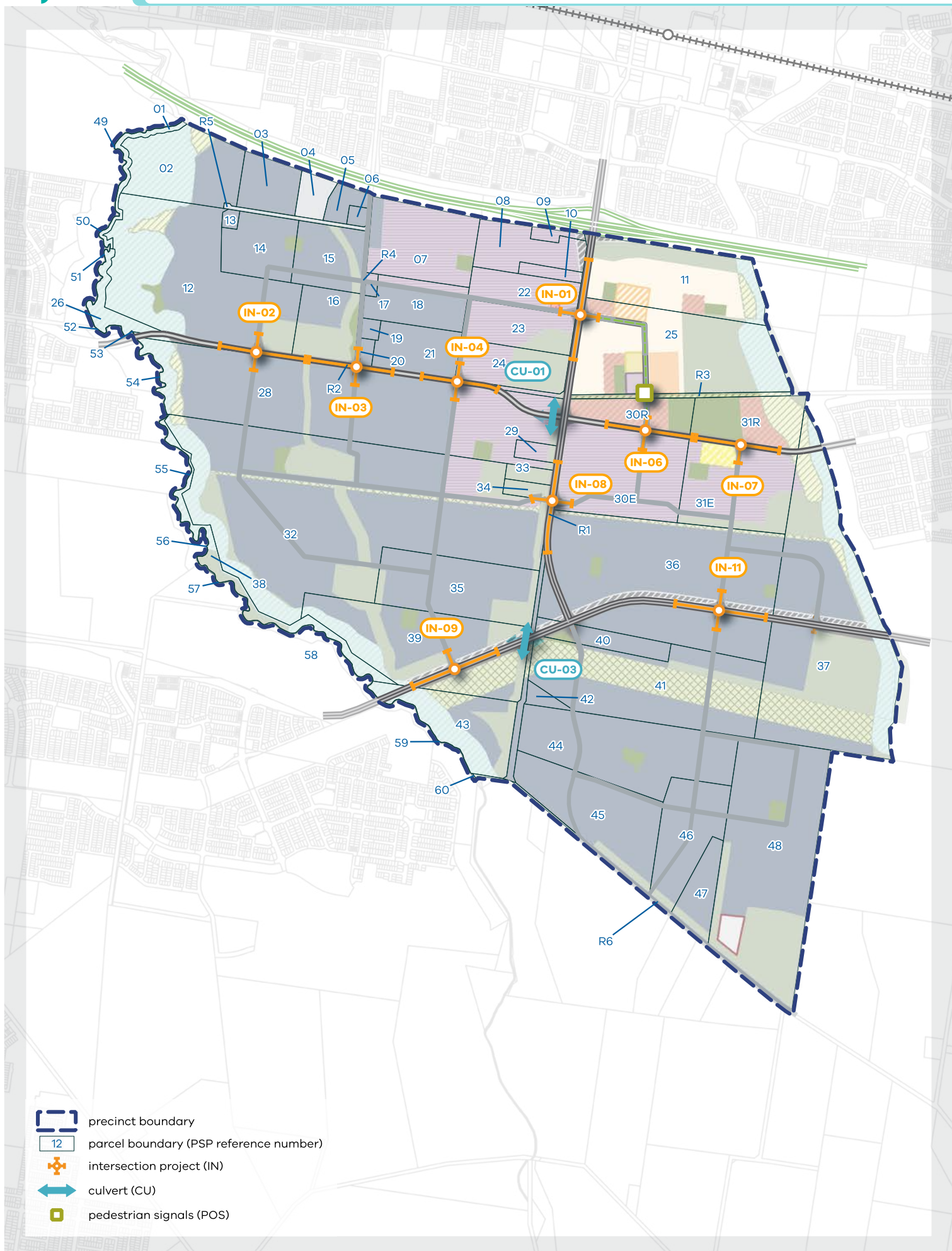
and to plan preparation costs.

[Table 5](#), [Table 6](#) and [Table 7](#) also include indicative staging for when the projects are anticipated to be delivered. The infrastructure projects have been identified as short (S), medium (M) and long (L) term stages:

Short (S):	0–5 years approx.
Medium (M):	5–10 years approx.
Long (L):	10 years and beyond

3.1 Cost apportionment and related infrastructure agreements

Some projects within this ICP includes apportionment external to the ICP area. Projects that have external apportionment as well as a balance of funding external to this ICP are identified in [Table 5](#), [Table 6](#) and [Table 7](#).



3.2 Transport construction projects

The transport construction projects included in this ICP are based on the transport network depicted in [Plan 2 Monetary Component Standard Levy Transport Projects](#), as identified by the Officer South (Employment) PSP.

The transport construction projects contributed to by the monetary component of this ICP are listed in the following tables.

[Table 5](#) and [Table 6](#) describe:

- The transport construction projects contributed to by the standard ([Table 5](#)) and supplementary ([Table 6](#)) levy,
- The expected staging,
- The apportionment to this ICP,
- Any external funding source(s) for items not fully apportioned to this ICP,
- The total estimated cost, and
- The estimated cost per net developable hectare.

Table 5 Standard levy transport construction projects

PROJECT ID	PROJECT TITLE & DESCRIPTION	STAGING	APPORTIONMENT TO THIS ICP	APPORTIONMENT FUNDING SOURCE	TOTAL ESTIMATED COST	COST APPORTIONED TO ICP	COST PER HA
INTERSECTION PROJECTS							
OS-IN-01	Construction of an interim primary arterial to connector signalised 4-way intersection.	S–M	100.00%	N/A	\$15,171,375	\$15,171,375	\$21,887
OS-IN-02	Construction of an interim secondary arterial to connector signalised 4-way intersection.	M–L	100.00%	N/A	\$10,774,444	\$10,774,444	\$15,544
OS-IN-03	Construction of an interim secondary arterial to connector signalised 4- way intersection.	M–L	100.00%	N/A	\$11,186,929	\$11,186,929	\$16,139
OS-IN-04	Construction of an interim secondary arterial to connector signalised 4- way intersection.	S–M	100.00%	N/A	\$10,556,228	\$10,556,228	\$15,229
OS-IN-06	Construction of a secondary arterial to connector signalised 4- way intersection.	M	100.00%	N/A	\$9,111,526	\$9,111,526	\$13,145
OS-IN-07	Construction of an interim secondary arterial to connector signalised T-intersection.	S–M	100.00%	N/A	\$7,161,854	\$7,161,854	\$10,332
OS-IN-08	Construction of a primary arterial to connector signalised 4- way intersection.	S–M	100.00%	N/A	\$14,786,166	\$14,786,166	\$21,332
OS-IN-09	Construction of a primary arterial to connector signalised T-intersection.	L	100.00%	N/A	\$9,725,147	\$9,725,147	\$14,030
OS-IN-11 (Standard Levy)	Construction of a primary arterial to connector 4- way signalised intersection.	M	91.27%	N/A	\$11,285,607	\$10,300,171	\$14,860
PEDESTRIAN-OPERATED SIGNALS PROJECTS							
OS-POS-01	Construction of pedestrian-operated signals along the connector boulevard	S–M	100.00%	N/A	\$353,672	\$353,672	\$510
CULVERT AND BRIDGE PROJECTS							
OS-CU-01	Construction of culvert crossing over the 40m wide drainage corridor of secondary arterial ultimate extent	S–M	100.00%	N/A	\$1,515,183	\$1,515,183	\$2,186
OS-CU-03	Construction of culvert crossing over the 50m wide drainage corridor of primary arterial ultimate	M	100.00%	N/A	\$1,641,409	\$1,641,409	\$2,368
TOTAL STANDARD TRANSPORT LEVIES					\$103,269,540.29	\$102,284,104.29	\$147,562.00

Note: Minor discrepancies in numbers due to rounding.

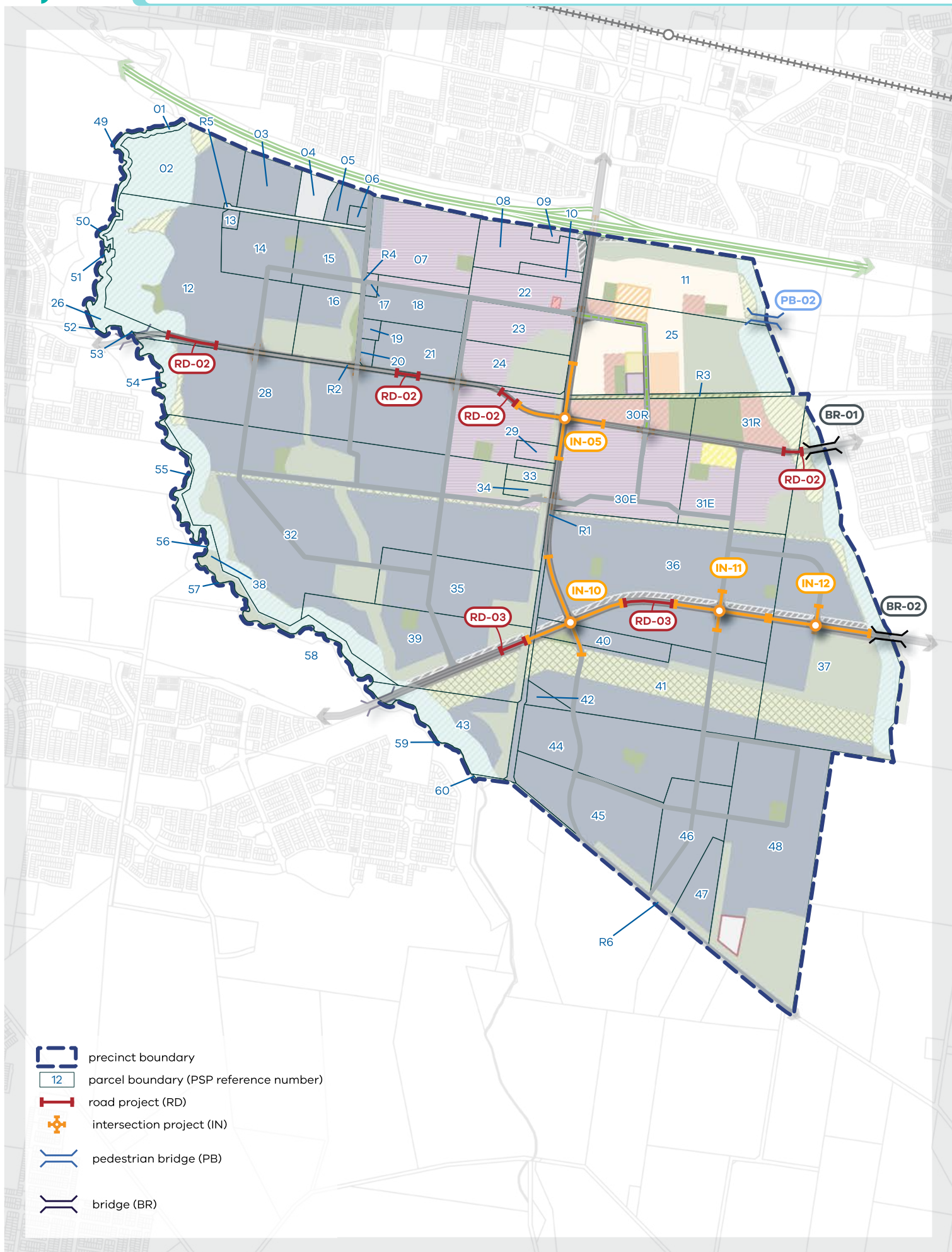
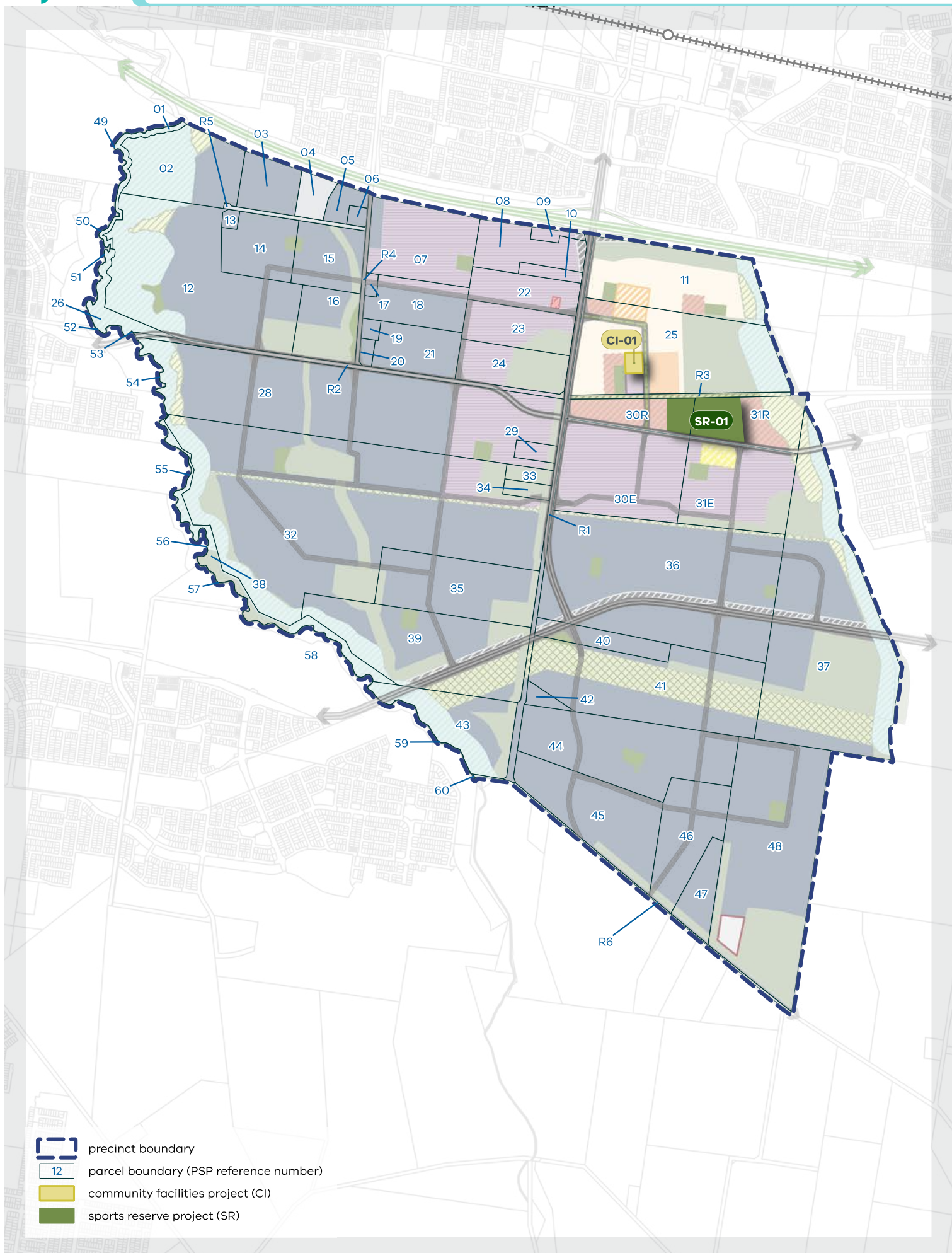


Table 6 Supplementary levy transport construction projects

PROJECT ID	PROJECT TITLE & DESCRIPTION	STAGING	APPORTIONMENT TO THIS ICP	APPORTIONMENT FUNDING SOURCE	TOTAL ESTIMATED COST	COST APPORTIONED TO ICP	COST PER HA
ROAD PROJECTS							
OS-RD-02	Construction of 2 lanes in one carriageway in a road reservation with a width of 34 metres	S-M	100.00%	N/A	\$8,029,392	\$8,029,392	\$11,584
OS-RD-03	Construction of 2 lanes in one carriageway in a road reservation with a width of 70 metres (41 metres of public purpose land)	M	100.00%	N/A	\$4,566,349	\$4,566,349	\$6,588
INTERSECTION PROJECTS							
OS-IN-05	Construction of a primary arterial to secondary arterial 4-way signalised intersection	M	100.00%	N/A	\$19,913,347.71	\$19,913,347.71	\$28,728.35
OS-IN-10	Construction of a primary arterial to primary arterial 4-way signalised intersection	M	100.00%	N/A	\$16,791,948.90	\$16,791,948.90	\$24,225.21
OS-IN-11 (Supplementary Levy)	Construction of a primary arterial to connector – 4-way signalised intersection	M	8.73%	N/A	\$11,285,607.45	\$985,436.01	\$1,421.66
OS-IN-12	Construction of a primary arterial to connector signalised T-intersection	M	100.00%	N/A	\$8,819,790.38	\$8,819,790.38	\$12,724.03
CULVERT AND BRIDGE PROJECTS							
OS-BR-01	Construction of a secondary arterial road bridge (interim standard) over Lower Gum Scrub Creek into Cardinia Road (Employment) PSP in accordance with the Growling Grass Frog Conservation Area requirements	S-M	50.00%	Cardinia Road (Employment) Precinct/ Cardinia Shire	\$15,310,474	\$7,655,237	\$11,044
OS-BR-02	Construction of an arterial road bridge (interim standard) over Lower Gum Scrub Creek into Cardinia Road (Employment) PSP in accordance with the Growling Grass Frog Conservation Area requirements	M-L	50.00%	Cardinia Road (Employment) Precinct/ Cardinia Shire	\$21,050,856	\$10,525,428	\$15,185
OS-PB-02	Construction of a shared pedestrian and cyclist bridge over Lower Gum Scrub Creek into Cardinia Road (Employment) Precinct	M	50.00%	Cardinia Shire	\$3,218,052	\$1,609,026	\$2,321
PLANNING PREPARATION COSTS							
OS-PP-01	Plan preparation costs	S	47.47%	Third party funding	\$5,565,656	\$2,641,961	\$3,811
TOTAL SUPPLEMENTARY TRANSPORT LEVIES					\$114,551,472.83	\$81,537,915.91	\$117,632.14

Notes:

- Minor discrepancies in numbers due to rounding.
- Project ID OS-RD-01 (Officer South Road) is not included as Officer South Road is composed of back-to-back intersections.



3.3 Community and recreation construction projects

The community and recreation construction projects included in this ICP are consistent with the range of facilities identified in the Officer South (Employment) PSP.

The community and recreation construction projects identified in this ICP are listed in the following table. As there are no allowable supplementary levy items for community and recreation construction, all listed projects will be contributed to from the standard levy. The expected staging, the apportionment to this ICP, any external funding source(s) for items not fully apportioned to this ICP, the total estimated cost and the estimated cost per hectare are shown in the following table.

Under *Ministerial Direction on the Preparation and Content of Infrastructure Contributions Plans* (February 2021), the amount of the total standard levy rate for residential development that may be used for community and recreation construction must not exceed \$109,088 per net developable hectare in the 2024/2025 financial year or the indexed amount in subsequent financial years.

Table 7 Standard levy community & recreation construction projects

PROJECT ID	PROJECT TITLE & DESCRIPTION	STAGING	APPORTIONMENT TO THIS ICP	APPORTIONMENT FUNDING SOURCE	TOTAL COST	COST APPORTIONED TO ICP	COST PER HA
OS-CI-01	Construction of a Level 2 multipurpose community centre (including 4× kindergartens, community rooms, neighbourhood house, consulting suites for outreach visiting services and additional facilities to cater for childcare and 2× maternal child health)	S–M	45%	N/A	\$16,864,008	\$7,588,803	\$173,181
OS-SR-01	Construction of a local sports reserve (comprising 2× Australian Rules Football/cricket ovals, 2× netball courts, 2× soccer fields)	S–M	45%	N/A	\$19,559,453	\$8,801,754	\$200,862
OS-SR-01c	Construction of multi-purpose pavilion	S–M	45%	N/A	\$5,200,113	\$2,340,051	\$53,401
TOTAL STANDARD COMMUNITY & RECREATION LEVIES					\$41,623,574.50	\$18,730,608.52	\$427,444.54
CAPPED LEVY							\$109,088

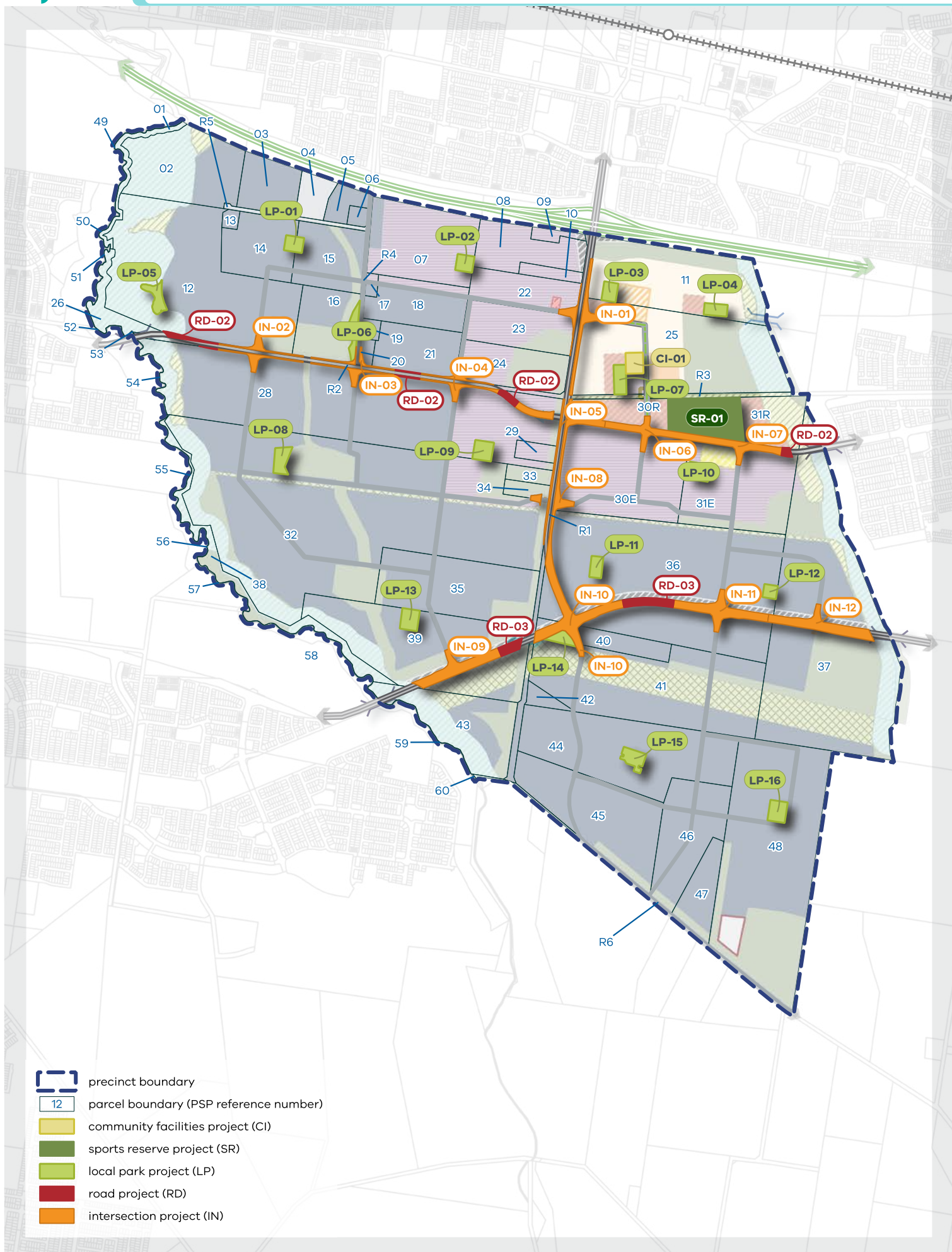
3.4 Project staging

The expected staging of each infrastructure construction item and plan preparation costs is set out in [Table 5](#), [Table 6](#) and [Table 7](#) and is based on information available at the time that the ICP was prepared. The collecting and development agencies will monitor and assess the required timing for infrastructure projects and have regard to strategic resource plans, the development of the PSP and areas external to the ICP.

The collecting and development agencies may consider alternative staging where:

- Infrastructure is to be constructed/provided by development proponents as works in kind, as agreed by the collecting agency
- Transport network priorities require the delivery of works or provision of public purpose land to facilitate broader road network connections, and
- Community needs determine a change to the delivery of works or provision of public purpose land for community facilities or open space.

All items in this ICP will be provided as soon as is practicable and as soon as sufficient contributions are available, consistent with this ICP and acknowledging the development agency's capacity to provide the balance of funds not collected by this ICP.



- 12 precinct boundary
- 12 parcel boundary (PSP reference number)
- community facilities project (CI)
- sports reserve project (SR)
- local park project (LP)
- road project (RD)
- intersection project (IN)

4.0 PUBLIC PURPOSE LAND PROVISION

The public purpose land included in this ICP has been determined, and been subject to consultation, as part of the preparation of the Officer South (Employment) PSP.

Public purpose land specified in an ICP may only be used or developed for an allowable public purpose specified in Annexure 1 to the *Ministerial Direction on the Preparation and Content of Infrastructure Contributions Plans* (February 2021). Public purpose land may be:

Inner public purpose land (IPPL)

Land within the ICP plan area that is specified in the ICP as land to be set aside for public purposes; or

Outer public purpose land (OPPL)

Land outside of the ICP plan area that is specified in the ICP as land to be acquired for public purposes.

Only items listed in this ICP can be provided for by the land component of this ICP. Public purpose land not listed must be funded via other funding mechanisms.

4.1 Inner and outer public purpose land

[Plan 5 Public Land Projects](#) shows the location of public purpose land (both inner and outer) as well as the type of allowable public purposes for which it may be used and developed.

[Table 8 Inner public purpose land](#) specifies for each public purpose land (inner) the type of allowable public purposes for which it may be used and developed, the area and the expected staging. The staging for public purpose land is the same as the monetary component specified in [Section 3.0](#).

The IPPL forming part of each parcel of land is specified in [Table 9 Public purposes land summary](#).

Table 8 Inner public purpose land

IPPL ID	INFRASTRUCTURE PROJECT DESCRIPTION	IPPL AREA (HA)	STAGING
TRANSPORT			
OS-IN-01	Construction of an interim primary arterial to connector signalised 4-way intersection	1.78	S-M
OS-IN-02	Construction of an interim secondary arterial to connector signalised 4-way intersection	1.31	M-L
OS-IN-03	Construction of an interim secondary arterial to connector signalised 4-way intersection	1.12	M-L
OS-IN-04	Construction of an interim secondary arterial to connector signalised 4-way intersection	1.32	S-M
OS-IN-05	Construction of a primary arterial to secondary arterial 4-way signalised intersection	2.46	M
OS-IN-06	Construction of a secondary arterial to connector signalised 4-way intersection	2.15	M
OS-IN-07	Construction of an interim secondary arterial to connector signalised T-intersection	1.94	S-M
OS-IN-08	Construction of a primary arterial to connector signalised 4-way intersection	1.69	S-M
OS-IN-09	Construction of a primary arterial to connector signalised T-intersection	2.70	L
OS-IN-10	Construction of a primary arterial to primary arterial-4-way signalised intersection	4.57	M-L
OS-IN-11	Construction of a primary arterial to connector 4-way signalised intersection	2.98	M
OS-IN-12	Construction of a primary arterial to connector signalised T-intersection	2.98	M

IPPL ID	INFRASTRUCTURE PROJECT DESCRIPTION	IPPL AREA (HA)	STAGING
OS-RD-02	Construction of 2 lanes in one carriageway in a road reservation with a width of 34 metres	1.26	S-M
OS-RD-03	Construction of 2 lanes in one carriageway in a road reservation with a width of 41 metres	1.70	M
OS-RD-04	Land for road approach to bridge	-	M
SUB-TOTAL		29.97	
COMMUNITY & RECREATION			
OS-LP-01	Provision of land for a local park	0.77	M-L
OS-LP-02	Provision of land for a local park	0.77	S-M
OS-LP-03	Provision of land for a local park	0.75	S-M
OS-LP-04	Provision of land for a local park	0.75	S-M
OS-LP-05	Provision of land for a local park	1.00	S-M
OS-LP-06	Provision of land for a local park	0.98	M-L
OS-LP-07	Provision of land for a local park	1.00	M-L
OS-LP-08	Provision of land for a local park	1.00	S-M
OS-LP-09	Provision of land for a local park	1.00	S-M
OS-LP-10	Provision of land for a local park	1.00	M-L
OS-LP-11	Provision of land for a local park	0.70	M-L
OS-LP-12	Provision of land for a local park	0.50	M
OS-LP-13	Provision of land for a local park	1.00	L
OS-LP-14	Provision of land for a local park	0.67	M-L
OS-LP-15	Provision of land for a local park	1.00	L
OS-LP-16	Provision of land for a local park	1.00	L
OS-CI-01	Construction of a Level 2 multipurpose community centre (including 4× kindergartens, community rooms, neighbourhood house, consulting suites for outreach visiting services and additional facilities to cater for childcare and 2× maternal child health)	1.00	S-M
OS-SR-01	Construction of a local sports reserve (comprising 2× Australian Rules Football/cricket ovals, 2× netball courts, 2× soccer fields)	7.82	S-M
SUBTOTAL		22.71	
TOTAL		52.67	

Notes:

- Project ID OS-RD-01 (Officer South Road) is not included as Officer South Road is composed of back-to-back intersections.
- The total area for OS-SR-01 is 8.5 hectares, including 0.68 hectares of green spine land.

4.1.1 Public open space contributions

The overall open space contribution for this ICP is identified in [Table 16 Summary land use budget](#) and [Table 17 Parcel specific land use budget](#). This ICP provides for the provision of public purpose land for local sports reserves and local parks. The community and recreation levy of the monetary component contributes towards the construction of local sports reserves. The construction of local parks is considered developer works and separate from this ICP.

4.2 Land component

[Table 9 Public purposes land summary](#) below summarises for each class of development specified in this ICP:

- The total area of contribution land
- The total area of transport inner public purpose land
- The total area of community and recreation inner public purpose land
- The total area of inner public purpose land
- The total area of outer public purpose land
- The ICP land contribution percentage.

Table 9 Public purposes land summary

CLASS OF DEVELOPMENT	TOTAL CONTRIBUTION LAND (HA)	TRANSPORT INNER PUBLIC PURPOSE LAND (HA)	RESIDENTIAL COMMUNITY & RECREATION INNER PUBLIC PURPOSE LAND (HA)	TOTAL INNER PUBLIC PURPOSE LAND (HA)	TOTAL OUTER PUBLIC PURPOSE LAND (HA)	TOTAL PUBLIC PURPOSE LAND (HA)	TOTAL ICP LAND CONTRIBUTION PERCENTAGE
Residential	59.14	2.38	11.32	13.70	-	13.70	23.16%
Commercial & Industrial	686.69	27.59	-	38.97	-	38.97	5.68%
TOTAL	745.83	29.97	11.32	52.67	-	52.67	

The ICP land contribution percentage for a class of development is calculated by dividing the total area of public purpose land specified in this ICP that is attributable to that class of development, by the total area of the contribution land in the ICP plan area in that class of development.

Where the need for a type of public purpose land is attributable to more than one class of development (for example, transport public purpose land), each development class's share of the public purpose land is equal to its proportion of the total contribution land.

As public purpose land cannot be evenly distributed across all parcels, 52.67ha (13.70ha residential and 38.97ha commercial and industrial) of inner public purpose land as identified in [Table 9 Public purposes land summary](#), will be equalised by parcels that are required to provide less than the ICP land contribution percentage identified in [Table 9](#).

[Table 10 ICP land equalisation rate](#) summarises for each class of development specified in this ICP:

- Total amount of IPPL (in hectares) that is provided over the ICP land contribution percentage
- The total value of the credits for the IPPL over the ICP land contribution percentage
- The total estimated value for any OPPL
- The total land equalisation to be paid (IPPL credits plus OPPL estimated value)
- The total amount of IPPL that is equal to or less than the ICP land contribution percentage (this is IPPL (Ha) to be directly provided by each parcel and this land is not entitled to a credit), and
- The land equalisation rate (total land equalisation value divided by the total IPPL under the ICP land contribution percentage).

The land equalisation rate (\$ per Ha) is used to determine the land equalisation amount specified in [Table 10](#). The land equalisation amount is required to be paid by parcels which have a land contribution percentage that is less than the ICP land contribution percentage.

Table 10 ICP land equalisation rate

CLASS OF DEVELOPMENT	TOTAL IPPL (HA) EQUAL TO OR LESS THAN ICP LAND CONTRIBUTION PERCENTAGE	TOTAL IPPL (HA) OVER ICP LAND CONTRIBUTION PERCENTAGE	TOTAL IPPL LAND CREDIT AMOUNT (FOR 'OVER' LAND)	TOTAL OUTER LAND ESTIMATED VALUE	TOTAL LAND EQUALISATION TO BE PAID	LAND EQUALISATION RATE (\$ PER HA)
Residential	9.75	5.58	\$20,935,312.86	-	\$13,395,158.81	\$3,388,003.81
Commercial & Industrial	22.86	14.49	\$ 47,049,331.34	-	\$54,589,485.39	
TOTAL	32.60	20.07	\$67,984,644.21	-	\$67,984,644.21	

[Table 11 Public purpose land credit & equalisation amounts](#) specifies for each parcel of land in the ICP plan area: the total contribution area of the parcel:

- The total ICP land contribution percentage
- The type of public purpose for which that IPPL may be used and developed
- The IPPL parcel contribution percentage
- The number of hectares that the parcel contribution percentage is above (land credit) or below (land equalisation) the ICP land contribution percentage
- A land credit amount (hectares and total (\$))
- The land equalisation amount expressed as a rate per net developable hectares in the parcel.

Table 11 Public purpose land credit & equalisation amounts

PSP PARCEL ID	TOTAL CONTRIBUTION AREA (HA)	LAND USE	ICP LAND CONTRIBUTION PERCENTAGE (HA)	PUBLIC PURPOSE LAND				PARCEL CONTRIBUTION PERCENTAGE (HA)	LAND CREDIT AMOUNT		LAND EQUALISATION AMOUNT		
				TRANSPORT (HA)	RESIDENTIAL COMMUNITY & RECREATION (HA)	COMMERCIAL & INDUSTRIAL COMMUNITY & RECREATION (HA)	PARCEL CONTRIBUTION – TOTAL (HA)		HECTARES	TOTAL \$	HECTARES	TOTAL \$	\$ PER NDHA
OS-01	–	Employment	–	–	–	–	–	–	–	–	–	–	–
OS-02	7.75	Employment	0.44	–	–	–	–	–	–	–	0.44	\$1,489,632.32	\$192,276.39
OS-03	8.32	Employment	0.47	–	–	–	–	–	–	–	0.47	\$1,599,970.96	\$192,276.39
OS-04*	–	Employment	–	–	–	–	–	–	–	–	–	–	–
OS-05	3.01	Employment	0.17	–	–	–	–	–	–	–	0.17	\$578,202.37	\$192,276.39
OS-06	1.00	Employment	0.06	–	–	–	–	–	–	–	0.06	\$192,227.65	\$192,276.39
OS-07	21.52	Employment	1.22	–	–	0.77	0.77	3.58%	–	–	0.45	\$1,530,854.99	\$71,139.87
OS-08	10.59	Employment	0.60	–	–	–	–	–	–	–	0.60	\$2,036,721.89	\$192,276.39
OS-09	1.21	Employment	0.07	–	–	–	–	–	–	–	0.07	\$233,046.06	\$192,276.39
OS-10	1.96	Employment	0.11	–	–	–	–	–	–	–	0.11	\$375,997.88	\$192,276.39
OS-11	17.37	Residential	4.02	0.29	1.50	–	1.79	10.29%	–	–	2.24	\$7,573,883.15	\$436,042.35
OS-12	32.32	Employment	1.83	0.99	–	1.00	1.99	6.17%	0.16	\$648,634.98	–	–	–
OS-13	0.81	Employment	0.05	–	–	–	–	–	–	–	0.05	\$155,585.52	\$192,276.39
OS-14	12.00	Employment	0.68	–	–	0.47	0.47	3.91%	–	–	0.21	\$716,607.93	\$59,716.03
OS-15	10.14	Employment	0.58	–	–	0.30	0.30	2.96%	–	–	0.28	\$932,706.98	\$91,981.60
OS-16	5.92	Employment	0.34	0.25	–	0.98	1.22	20.69%	0.89	\$4,673,873.00	–	–	–
OS-17	0.77	Employment	0.04	–	–	–	–	–	–	–	0.04	\$147,505.99	\$192,276.39
OS-18	12.07	Employment	0.69	–	–	–	–	–	–	–	0.69	\$2,321,292.84	\$192,276.39
OS-19	1.00	Employment	0.06	–	–	–	–	–	–	–	0.06	\$192,209.16	\$192,276.39
OS-20	1.00	Employment	0.06	0.16	–	–	0.16	16.41%	0.11	\$438,244.70	–	–	–
OS-21	10.84	Employment	0.62	0.31	–	–	0.31	2.87%	–	–	0.30	\$1,029,668.73	\$94,954.72
OS-22	9.75	Employment	0.55	0.36	–	–	0.36	3.70%	–	–	0.19	\$651,099.45	\$66,789.90
OS-23	9.44	Employment	0.54	0.16	–	–	0.16	1.74%	–	–	0.37	\$1,259,337.55	\$133,454.75
OS-24	5.74	Employment	0.33	0.43	–	–	0.43	7.48%	0.10	\$318,199.99	–	–	–
OS-25	21.31	Residential	4.94	1.22	2.00	–	3.22	15.10%	–	–	1.72	\$5,821,275.67	\$273,113.46
OS-26	0.06	Employment	0.00	0.06	–	–	0.06	100.00%	0.06	\$179,217.10	–	–	–
OS-28	71.27	Employment	4.04	3.54	–	1.00	4.54	6.36%	0.49	\$1,480,032.05	–	–	–

PSP PARCEL ID	TOTAL CONTRIBUTION AREA (HA)	LAND USE	ICP LAND CONTRIBUTION PERCENTAGE (HA)	PUBLIC PURPOSE LAND				PARCEL CONTRIBUTION PERCENTAGE (HA)	LAND CREDIT AMOUNT		LAND EQUALISATION AMOUNT		
				TRANSPORT (HA)	RESIDENTIAL COMMUNITY & RECREATION (HA)	COMMERCIAL & INDUSTRIAL COMMUNITY & RECREATION (HA)	PARCEL CONTRIBUTION – TOTAL (HA)		HECTARES	TOTAL \$	HECTARES	TOTAL \$	\$ PER NDHA
OS-29	1.63	Employment	0.09	0.07	–	–	0.07	4.16%	–	–	0.02	\$83,681.88	\$51,195.78
OS-30E	30.89	Employment	1.75	2.51	–	–	2.51	8.11%	0.75	\$1,819,981.28	–	–	–
OS-30R	10.15	Residential	2.35	1.55	2.36	–	3.91	38.54%	1.56	\$5,769,038.85	–	–	–
OS-31E	18.56	Employment	1.05	1.32	–	1.00	2.32	12.50%	1.27	\$4,961,631.44	–	–	–
OS-31R	10.31	Residential	2.39	0.94	5.46	–	6.40	62.14%	4.02	\$15,166,274.01	–	–	–
OS-32	91.72	Employment	5.21	0.25	–	1.00	1.25	1.37%	–	–	3.95	\$13,393,146.27	\$146,020.75
OS-33	0.07	Employment	0.00	0.07	–	–	0.07	100.00%	0.07	\$235,811.97	–	–	–
OS-34	0.19	Employment	0.01	0.19	–	–	0.19	99.12%	0.18	\$377,096.56	–	–	–
OS-35	20.74	Employment	1.18	–	–	–	–	–	–	–	1.18	\$3,987,357.68	\$192,276.39
OS-36	71.23	Employment	4.04	7.45	–	1.20	8.65	12.15%	4.61	\$12,432,097.64	–	–	–
OS-37	29.15	Employment	1.65	2.88	–	–	2.88	9.88%	1.23	\$2,965,837.45	–	–	–
OS-38	–	Employment	–	–	–	–	–	–	–	–	–	–	–
OS-39	19.92	Employment	1.13	3.31	–	1.00	4.31	21.62%	3.18	\$10,752,549.14	–	–	–
OS-40	6.69	Employment	0.38	1.32	–	0.47	1.79	26.73%	1.41	\$5,766,124.04	–	–	–
OS-41	22.86	Employment	1.30	0.34	–	0.20	0.53	2.34%	–	–	0.76	\$2,585,142.01	\$113,068.81
OS-42	1.69	Employment	0.10	–	–	–	–	–	–	–	0.10	\$324,025.73	\$192,276.39
OS-43	4.66	Employment	0.26	–	–	–	–	–	–	–	0.26	\$896,293.39	\$192,276.39
OS-44	35.14	Employment	1.99	–	–	1.00	1.00	2.85%	–	–	0.99	\$3,367,910.06	\$95,852.26
OS-45	24.29	Employment	1.38	–	–	–	–	–	–	–	1.38	\$4,670,591.55	\$192,276.39
OS-46	16.93	Employment	0.96	–	–	–	–	–	–	–	0.96	\$3,254,548.05	\$192,276.39
OS-47	6.25	Employment	0.35	–	–	–	–	–	–	–	0.35	\$1,202,363.05	\$192,276.39
OS-48	42.24	Employment	2.40	–	–	1.00	1.00	2.37%	–	–	1.40	\$4,732,960.57	\$112,054.00
OS-49	–	Employment	–	–	–	–	–	–	–	–	–	–	–
OS-50	–	Employment	–	–	–	–	–	–	–	–	–	–	–
OS-51	–	Employment	–	–	–	–	–	–	–	–	–	–	–
OS-52	–	Employment	–	–	–	–	–	–	–	–	–	–	–
OS-53	–	Employment	–	–	–	–	–	–	–	–	–	–	–
OS-54	–	Employment	–	–	–	–	–	–	–	–	–	–	–

PSP PARCEL ID	TOTAL CONTRIBUTION AREA (HA)	LAND USE	ICP LAND CONTRIBUTION PERCENTAGE (HA)	PUBLIC PURPOSE LAND				PARCEL CONTRIBUTION PERCENTAGE (HA)	LAND CREDIT AMOUNT		LAND EQUALISATION AMOUNT		
				TRANSPORT (HA)	RESIDENTIAL COMMUNITY & RECREATION (HA)	COMMERCIAL & INDUSTRIAL COMMUNITY & RECREATION (HA)	PARCEL CONTRIBUTION – TOTAL (HA)		HECTARES	TOTAL \$	HECTARES	TOTAL \$	\$ PER NDHA
OS-55	–	Employment	–	–	–	–	–	–	–	–	–	–	–
OS-56	–	Employment	–	–	–	–	–	–	–	–	–	–	–
OS-57	–	Employment	–	–	–	–	–	–	–	–	–	–	–
OS-58	–	Employment	–	–	–	–	–	–	–	–	–	–	–
OS-59	–	Employment	–	–	–	–	–	–	–	–	–	–	–
OS-60	–	Employment	–	–	–	–	–	–	–	–	–	–	–
OS-R1	2.73	Employment	0.15	–	–	–	–	–	–	–	0.15	\$524,170.11	\$192,276.39
OS-R2	0.65	Employment	0.04	–	–	–	–	–	–	–	0.04	\$124,626.77	\$192,276.39
OS-R3	–	Residential	–	–	–	–	–	–	–	–	–	–	–
OS-R4	–	Employment	–	–	–	–	–	–	–	–	–	–	–
OS-R5	–	Employment	–	–	–	–	–	–	–	–	–	–	–
OS-R6	–	Employment	–	–	–	–	–	–	–	–	–	–	–
TOTAL	745.83			29.97	11.32	11.38	52.67	6.05	20.07	\$67,984,644.21	20.07	\$67,984,644.21	
TOTALS Residential	59.14		13.70	2.38	11.32		13.70	23.16%	5.58	\$20,935,312.86	3.95	\$13,395,158.81	
TOTALS Commercial & industrial	686.69		38.97	27.59		11.38	38.97	5.68%	14.49	\$47,049,331.34	16.11	\$54,589,485.39	

Note: An application to use or develop OS-04 in connection with its current use as a Freeway Service Centre is exempt from infrastructure contribution levies.

5.0 CONTRIBUTIONS & ADMINISTRATION

5.1 Collecting agency

Cardinia Shire Council is the collecting agency for the purposes of Part 3AB of the Act and this ICP. The monetary component and any land equalisation amount of an infrastructure contribution imposed under this ICP must be paid to the collecting agency. As the collecting agency, Cardinia Shire Council is responsible for the administration and enforcement of this ICP, including the payment of land credit amounts, in accordance with Part 3AB of the Act.

5.2 Development agency

Cardinia Shire Council is the development agency for the purposes of Part 3AB of the Act and this ICP. The development agency is responsible for provision of the infrastructure projects and acquisition of outer public purpose land identified in this ICP. As the development agency, Cardinia Shire Council is also responsible for the proper administration of this ICP in accordance with Part 3AB of the Act.

5.3 Net developable area

The monetary component of Metropolitan Greenfield Growth Area ICPs are payable on the net developable area (NDA) of land on any given development site (NDA is defined in Appendix 1 Definitions).

To align with the classes of development specified in this ICP, the NDA is divided into:

- Net developable area residential (NDA-R) – the NDA for the residential class of development
- Net developable area employment (NDA-E) – the NDA for the commercial and industrial class of development.

The net developable area for this ICP has been calculated in [Table 16 Summary land use budget](#) and [Table 17 Parcel specific land use budget](#). [Table 16](#) is the summary land use budget which summarises the land requirements and net developable area for the ICP plan area as a whole. [Table 17](#) is the parcel specific land use budget which specifies the net developable area and land requirements for each parcel of land in the ICP plan area.

For the purposes of this ICP, the number of net developable hectares for any specific parcel of land as set out in [Table 17](#) is changed if the area of non-developable land is reduced through detailed design and/or the collecting agency and the owner of that parcel agree to a variation to the parcel specific land budget as set out in [Table 17](#). The changes to [Table 17](#) and any consequential changes to the public purpose land credit and equalisation amounts in [Table 11](#) must be set out in an agreement made under section 173 of the Act. In that event,

- the Monetary Component for that parcel must then be paid based on that varied number of net developable hectares
- the Land Credit Amount for that parcel is the amount set out in that agreement; and
- the Land Equalisation Amount for that parcel is the amount set out in that agreement.

5.4 Contribution land

The land component of the infrastructure contribution is calculated based on the contribution land.

The contribution land specified in this ICP is the land in the ICP plan area in respect of which an infrastructure contribution is to be imposed under this plan if any of that land is developed. It excludes encumbered land, land already used or developed for a public purpose and land that is exempt from paying an infrastructure contribution under the *Ministerial Direction on the Preparation and Content of Infrastructure Contributions Plans* (February 2021). It includes the net developable area and inner public purpose land.

The contribution land in the ICP plan area is specified in [Table 11 Public purpose land credit & equalisation amounts](#) and [Table 17](#).

5.5 Levy rates and classes of development

Annexure 1 to the Ministerial Direction on the Preparation and Content of Infrastructure Contributions Plans (February 2021) specifies standard levy rates for two classes development for Metropolitan Greenfield Growth Areas – ‘**residential development**’ and ‘**commercial and industrial development**’.

[Table 12](#) specifies the standard levy rate for each class of development.

Table 12 Classes of development & standard levy rates

CLASS OF DEVELOPMENT	COMMUNITY & RECREATION CONSTRUCTION	TRANSPORT CONSTRUCTION	TOTAL STANDARD LEVY RATE
Residential	\$109,088.00	\$147,562.00	\$256,650.00
Commercial and Industrial	–	\$147,562.00	\$147,562.00

Table 13 Classes of development & supplementary levy rates

CLASS OF DEVELOPMENT	COMMUNITY & RECREATION CONSTRUCTION	TRANSPORT CONSTRUCTION	TOTAL SUPPLEMENTARY LEVY RATE
Residential	–	\$117,632.14	\$117,632.14
Commercial and Industrial	–	\$117,632.14	\$117,632.14

Table 14 Classes of development & total monetary levy rates

CLASS OF DEVELOPMENT	COMMUNITY & RECREATION CONSTRUCTION	TRANSPORT CONSTRUCTION	TOTAL LEVY RATE
Residential	\$109,088.00	\$265,194.14	\$374,282.14
Commercial and Industrial	–	\$265,194.14	\$265,194.14

5.6 Estimated value of public purpose land

A land credit amount specified in this ICP is based on the estimated value of the inner public purpose land in that parcel of land determined in accordance with Part 3AB of the Act and the *Ministerial Direction on the Preparation and Content of Infrastructure Contributions Plans* (February 2021) and the Infrastructure Contributions Plan Guidelines (ICP Guidelines).

The component of a land equalisation amount specified in this ICP that relates to any outer public purpose land is based on the estimated value of the outer public purpose land determined in accordance with the method specified in the Ministerial Direction.

The component of a land equalisation amount specified in this ICP that relates to any inner public purpose land is based on the estimated value of land credit amounts for inner public purpose land.

The estimated value of inner public purpose land in a parcel of land is required to be calculated when the parcel contribution percentage of that land is more than the ICP land contribution percentage for the class of development.

The parcels of land with a land contribution percentage that is more than the ICP public land contribution percentage are identified in [Table 10](#).

5.7 Payment of contributions

5.7.1 Timing of payment of monetary component & land equalisation amounts

Subdivision of land

If the development of the land involves a plan under the *Subdivision Act 1988*, the monetary component (standard levy) and any land equalisation amount of an infrastructure contribution must be paid to the collecting agency for the land after certification of the relevant plan of subdivision but cannot be required more than 21 days prior to the issue of a Statement of Compliance with respect to that plan.

If the subdivision is to be developed in stages, only the monetary component and any land equalisation amount for the stage to be developed is required paid to the collecting agency within 21 days prior to the issue of a Statement of Compliance for that stage, provided that a Schedule of Infrastructure Contributions is submitted with each stage of the plan of subdivision. The schedule must show the amount of the infrastructure contributions payable for each stage and the value of the contributions for prior stages to the satisfaction of the collecting agency.

If the collecting agency agrees to works in lieu of payment of the monetary component, the landowner must enter into an agreement under Section 173 of the *Planning and Environment Act 1987* in respect of the proposed works in lieu.

Development of land where no subdivision is proposed

Provided an infrastructure contribution has not yet been collected for development of the subject land, the monetary component and any land equalisation amount of an infrastructure contribution must be paid to the collecting agency before the issue of a building permit for each net developable hectare proposed to be developed prior to the commencement of any development (development includes buildings, car park, access ways, landscaping and ancillary components). If the collecting agency agrees to works in lieu of payment of the monetary component, the landowner must enter into an agreement, or other suitable arrangement, under Section 173 of the Act in respect of the proposed works or provision of land in lieu.

Where no building permit is required

Where no building permit is required, the monetary component and any land equalisation amount of an infrastructure contribution must be paid to the collecting agency prior to the commencement of any development in accordance with a permit issued under the Act, unless otherwise agreed by the collecting agency in a Section 173 agreement.

If the collecting agency agrees to works in lieu of payment of the monetary component, the landowner must enter into an agreement under Section 173 of the Act in respect of the proposed works or provision of land in lieu.

5.7.2 Inner public purpose land

If any land component of an infrastructure contribution includes inner public purpose land, that inner public purpose land must be provided in accordance with section 46GV of the Act.

5.8 Payment of land credit amounts

A person is entitled to be paid the land credit amount specified in this ICP in relation to a parcel of land if:

- On development of that parcel the person must, in accordance with section 46GV(4) of the Act, provide inner public purpose land forming part of that parcel to the collecting agency or a development agency; and
- The parcel contribution percentage of the parcel of land to be developed is more than the ICP land contribution percentage for that class of development.

The land credit amount is to be paid by the collecting agency to the landowner at a time to be agreed, but not before lodgement of a subdivision plan. This may be formalised in a section 173 agreement if the collecting agency and landowner agree.

5.9 Development exempt from contributions

Some classes of development are exempt from infrastructure contributions. Where land is subdivided or developed for an exempt purpose, as listed below, and the land is subsequently used for a purpose other than as one of those exempt uses, the owner of that land must pay to the collecting agency infrastructure contributions in accordance with the provisions of this ICP. The levy must be paid within 28 days of the date of the commencement of the construction of any buildings or works for that alternative use.

5.9.1 Schools

The development of land for government and non-government schools are exempt from the requirement to pay an infrastructure contribution levy in accordance with the *Ministerial Direction on the Preparation and Content of Infrastructure Contributions Plans* (February 2021).

5.9.2 Housing

Any housing to be provided by or on behalf of the Director of Housing is exempt from the requirement to pay an infrastructure contributions levy in accordance with the *Ministerial Direction on the Preparation and Content of Infrastructure Contributions Plans* (February 2021).

5.10 Works in kind

Under section 46GX of the Act, the collecting agency may accept the provision of works, services or facilities by an applicant in part or full satisfaction of the monetary component of an infrastructure contribution payable by the applicant to the collecting agency ('works in kind').

Before accepting the provision of works in kind, the collecting agency must obtain the agreement of the development agency or agencies specified in this ICP.

The collecting agency should only accept the provision of works in kind if:

- The works in kind constitute part or all of the delivery of an infrastructure project(s) identified in this ICP, to the satisfaction of the collecting agency and development agency.
- The collecting agency and development agency have agreed that the timing of the works in kind is consistent with priorities in this ICP (alternatively a credit for works may be delayed to a specified time).
- The works in kind are defined and agreed in a section 173 agreement.
- The detailed design of the works in kind is to the satisfaction of the development agency and any others identified in permit conditions.

If the collecting and development agencies accept the provision of works in kind:

- The value of the works in kind must be agreed and must not be higher than the amount assumed or specified in this ICP unless the collecting agency and development agency agrees
- The monetary component the infrastructure contribution payable by the applicant may be offset by the agreed value of the works in kind in the manner specified in any agreement.

The land component and any land equalisation amounts or land credit amounts cannot be accepted as works in kind.

5.10.1 Interim and temporary works

Interim and temporary works are not considered as eligible for works in kind credits against this ICP, unless agreed to by the collecting and development agencies.

5.11 Works in kind reimbursement

If the collecting agency agrees to accept works under section 46GX of the Act and the value of those works is greater than the monetary component of the infrastructure contribution payable by the applicant, subject to any agreement the applicant is entitled to be reimbursed the difference between the two amounts up to the maximum amount assumed or specified in this ICP for that infrastructure project.

The details of any reimbursement must be negotiated with and agreed to by the collecting agency and development agency.

5.12 Funds administration

The contributions made under this ICP will be held by the collecting agency until required for the provision of infrastructure projects. Details of contributions received and expenditures will be held by the collecting agency in accordance with the provisions of the *Local Government Act 2020*, the Act and the *Ministerial Reporting Requirements for Infrastructure Contributions Plans* (February 2021).

In accordance with the *Planning and Environment Act 1987*, the collecting agency to which the monetary component of contributions are paid must forward to the VPA (as planning authority) any part of the monetary component of contributions that is imposed for plan preparation costs. Subject to the agreement between the collecting agency and the planning authority, reimbursement of plan preparation costs should occur as soon as practicable within the first five years of development.

5.13 Annual indexation of standard levy rates

The standard and supplementary levy rates specified in this ICP will be indexed in accordance with the indexation method specified in Annexure 1 of the *Ministerial Direction on the Preparation and Content of Infrastructure Contributions Plans* (February 2021) on 1 July each year.

The indices used in the indexation method are set out in [Table 15 Indices](#).

Table 15 Indices

CLASS OF INFRASTRUCTURE	INDEX
Community and recreation construction	Australian Bureau of Statistics Producer Price Index for Non-Residential Building Construction – Victoria (Catalogue 6427.0, Table 17, Output of the Construction Industries, subdivision and class index numbers)
Transport construction (inclusive of plan preparation costs)	Australian Bureau of Statistics Producer Price Index for Road and Bridge Construction – Victoria (Catalogue 6427.0, Table 17, Output of the Construction Industries, subdivision and class index numbers)

5.14 Adjustment of land credit amounts

The land credit amounts specified in this ICP will be adjusted in accordance with the method of adjustment specified in Annexure 1 of the *Ministerial Direction on the Preparation and Content of Infrastructure Contributions Plans* (February 2021) on 1 July each year.

5.15 Adjustment of land equalisation amounts

The land equalisation amounts specified in this ICP will be adjusted in accordance with the method of adjustment specified in Annexure 1 of the *Ministerial Direction on the Preparation and Content of Infrastructure Contributions Plans* (February 2021) on 1 July each year.

6.0 APPENDICES

Appendix 1 Definitions

TERM	DEFINITION
collecting agency	The Minister, public authority or municipal council specified in an infrastructure contributions plan as the entity that an infrastructure levy is payable to in accordance with Part 3AB of the <i>Planning and Environment Act 1987</i> .
contribution land	<p>The land in the ICP plan area of an infrastructure contribution plan in respect of which an infrastructure contribution is to be imposed under the plan if any of that land is developed.</p> <p>This excludes encumbered land, existing public purposes land and land that is exempt from paying a contribution. It includes net developable area and inner public purpose land</p>
development agency	The Minister, public authority or municipal council specified in an infrastructure contributions plan as the entity responsible for works, services or facilities and public purpose land specified in this ICP plan.
gross developable area	Total precinct area excluding encumbered land, arterial roads and other roads with four or more lanes.
inner public purpose land (IPPL)	Land within the ICP plan area that is specified in this ICP as land to be set aside for public purposes.
net developable area (NDA)	Land within a precinct available for development. This excludes encumbered land, arterial roads, railway corridors, schools and community facilities and credited public open space. It includes lots, local streets and connector streets. Net developable area may be expressed in terms of hectare units (for example NDHa).
summary land use budget table	A table setting out the total precinct area, a breakdown of constituent non developable land uses proposed within the precinct and the net developable area.
parcel specific land use budget	As per summary land use budget but broken down on a parcel by parcel basis. For the ICP, it also includes contribution land areas and a breakdown of transport and community and recreation land takes for each parcel.
outer public purpose land (OPPL)	Land outside of the ICP plan area that is specified in this ICP as land to be acquired for public purposes.
plan preparation costs	The reasonable costs and expenses incurred by the planning authority in preparing the infrastructure contributions plan and the related precinct structure plan or strategic plan.
works in kind	Any works, services or facilities accepted by the collecting agency in a part or full satisfaction of the monetary component of an infrastructure contribution.

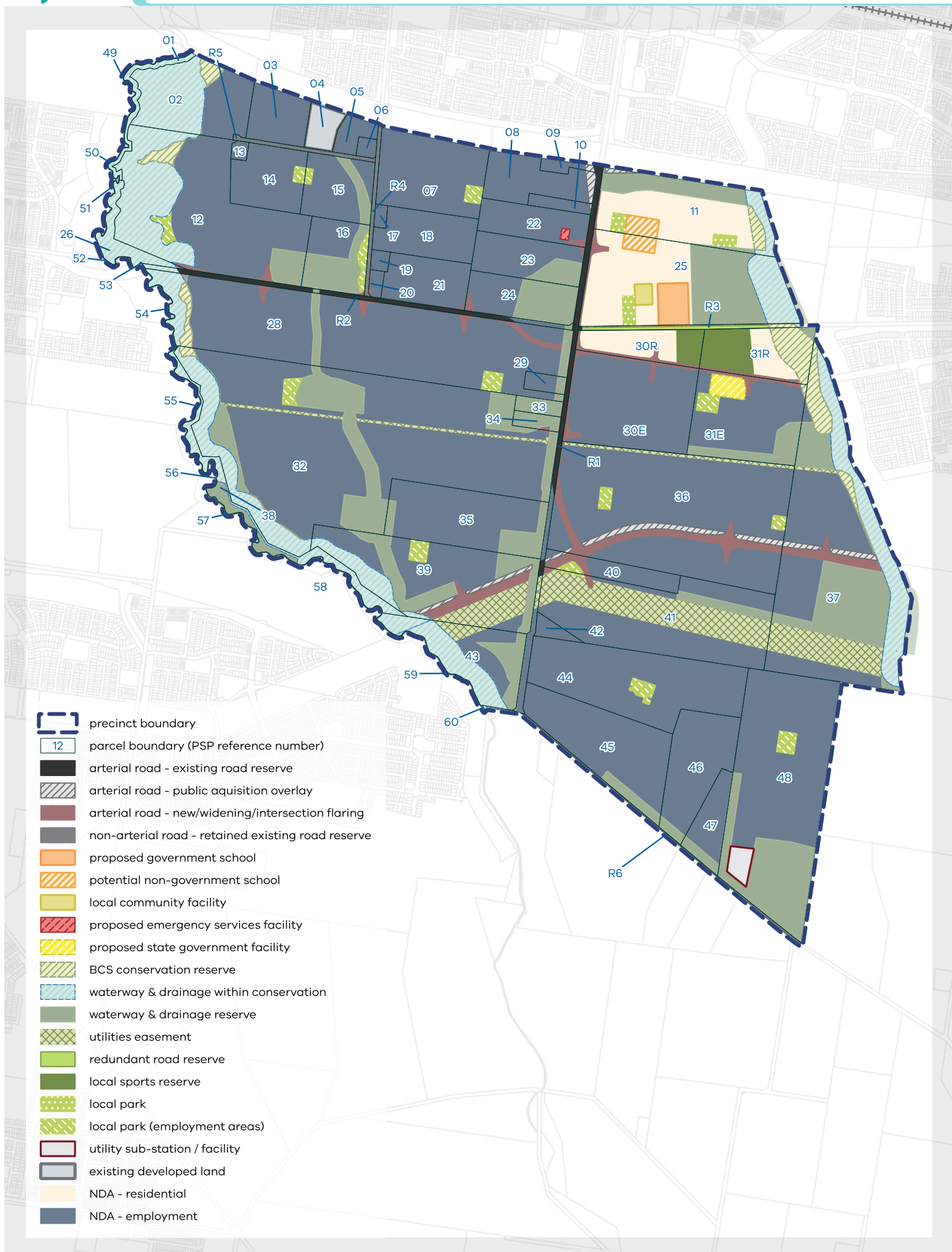


Table 16 Summary land use budget

DESCRIPTION	HECTARES	% OF TOTAL	% OF NDA
TOTAL PRECINCT AREA	1,068.76		
TRANSPORT			
Arterial road – existing road reserve	8.26	0.77%	1.19%
Arterial road – Public Acquisition Overlay	6.62	0.62%	0.95%
Arterial road – new/widening/intersection flaring (ICP land)	29.97	2.80%	4.32%
Non-arterial road – new/widening/intersection flaring (ICP land)	–	–	–
Non-arterial road – retained existing road reserve	4.87	0.46%	0.70%
SUB-TOTAL TRANSPORT	49.72	4.65%	7.17%
COMMUNITY & EDUCATION			
ICP community facilities	1.00	0.09%	0.14%
Proposed government school	3.50	0.33%	0.50%
Potential non-government school	3.00	0.28%	0.43%
Potential government facility/emergency services	2.25	0.21%	0.32%
SUB-TOTAL EDUCATION	9.75	0.91%	1.41%
OPEN SPACE			
UNCREDITED OPEN SPACE & REGIONAL OPEN SPACE			
BCS conservation reserve	14.12	1.32%	2.04%
Cultural value investigation area	–	–	–
Waterway and drainage reserve	134.14	12.55%	19.35%
Waterway and drainage within conservation	95.99	8.98%	13.85%
Utilities easements	42.78	4.00%	6.17%
Redundant road reserve	1.66	0.16%	0.24%
SUB-TOTAL UNCREDITED OPEN SPACE & REGIONAL OPEN SPACE	288.69	27.01%	41.65%
CREDITED OPEN SPACE			
Local network park (ICP land)	13.88	1.30%	2.00%
Local sports reserve (ICP land)*	7.82	0.73%	1.13%
SUB-TOTAL CREDITED OPEN SPACE	21.71	2.03%	3.13%
TOTAL ALL OPEN SPACE	310.16	29.02%	44.73%
OTHER			
Utilities sub-stations/facilities (acquired by relevant authority)	2.00	0.19%	0.29%
Existing developed land	3.74	0.35%	0.54%
SUB-TOTAL OTHER	5.74	0.54%	0.83%
TOTAL NET DEVELOPABLE AREA (NDA) Ha	693.16	64.86%	
TOTAL NET DEVELOPABLE AREA – RESIDENTIAL (NDA-R) Ha	43.82	4.10%	
TOTAL NET DEVELOPABLE AREA – EMPLOYMENT (NDA-E) Ha	649.34	60.76%	

Note: Minor discrepancies in numbers due to rounding.

* The total sports reserve area is 8.5 hectares, including 0.68 hectares of green spine land.

Table 17 Parcel specific land use budget

PARCEL ID (OFFICER SOUTH (OS) – PARCEL NUMBER)	TOTAL AREA (HA)	ARTERIAL ROAD – EXISTING ROAD RESERVE	ARTERIAL ROAD – PUBLIC ACQUISITION OVERLAY	ARTERIAL ROAD – NEW / WIDENING / INTERSECTION FLARING (ICP LAND)	NON-ARTERIAL ROAD – RETAINED EXISTING ROAD RESERVE	GOVERNMENT SCHOOL	POTENTIAL NON- GOVERNMENT SCHOOL	ICP COMMUNITY FACILITIES	BCS CONSERVATION RESERVE	WATERWAY AND DRAINAGE RESERVE	UTILITIES EASEMENTS	LOCAL SPORTS RESERVE (ICP LAND)	LOCAL NETWORK PARK (ICP LAND)	UTILITIES SUB- STATIONS / FACILITIES (ACQUIRED BY RELEVANT AUTHORITY)	POTENTIAL GOVERNMENT FACILITY / EMERGENCY SERVICES	REDUNDANT ROAD RESERVE	WATERWAY AND DRAINAGE WITHIN CONSERVATION	EXISTING DEVELOPED LAND	TOTAL NET DEVELOPABLE AREA (HA)	TOTAL CONTRIBUTION LAND (HA)	TRANSPORT (HA)	RESIDENTIAL COMMUNITY & RECREATION (HA)	COMMERCIAL & INDUSTRIAL COMMUNITY AND RECREATION (HA)
Total PSP	1,068.76	8.26	6.62	29.97	4.87	3.50	3.00	1.00	14.12	134.14	42.78	7.82	13.88	2.00	2.25	1.66	95.99	3.74	693.16	745.83	29.97	11.32	11.38
OS-01	2.54	-	-	-	-	-	-	-	-	-	-	-	-	-	-	-	2.54	-	-	-	-	-	-
OS-02	20.85	-	-	-	-	-	-	-	1.03	-	-	-	-	-	-	-	12.07	-	7.75	7.75	-	-	-
OS-03	8.32	-	-	-	-	-	-	-	-	-	-	-	-	-	-	-	-	-	8.32	8.32	-	-	-
OS-04	3.74	-	-	-	-	-	-	-	-	-	-	-	-	-	-	-	-	3.74	-	-	-	-	-
OS-05	3.01	-	-	-	-	-	-	-	-	-	-	-	-	-	-	-	-	-	3.01	3.01	-	-	-
OS-06	1.00	-	-	-	-	-	-	-	-	-	-	-	-	-	-	-	-	-	1.00	1.00	-	-	-
OS-07	21.52	-	-	-	-	-	-	-	-	-	-	-	0.77	-	-	-	-	-	20.75	21.52	-	-	0.77
OS-08	11.23	-	0.63	-	-	-	-	-	-	-	-	-	-	-	-	-	-	-	10.59	10.59	-	-	-
OS-09	1.38	-	0.17	-	-	-	-	-	-	-	-	-	-	-	-	-	-	-	1.21	1.21	-	-	-
OS-10	2.00	-	0.04	-	-	-	-	-	-	-	-	-	-	-	-	-	-	-	1.96	1.96	-	-	-
OS-11	29.66	0.00	0.27	0.29	-	-	1.66	-	1.25	7.01	-	-	1.50	-	-	-	2.10	-	15.58	17.37	0.29	1.50	-
OS-12	54.79	-	-	0.99	-	-	-	-	1.39	2.92	-	-	1.00	-	-	-	18.17	-	30.32	32.32	0.99	-	1.00
OS-13	0.81	-	-	-	-	-	-	-	-	-	-	-	-	-	-	-	-	-	0.81	0.81	-	-	-
OS-14	12.00	-	-	-	-	-	-	-	-	-	-	-	0.47	-	-	-	-	-	11.53	12.00	-	-	0.47
OS-15	12.00	-	-	-	-	-	-	-	-	1.86	-	-	0.30	-	-	-	-	-	9.84	10.14	-	-	0.30
OS-16	12.00	-	-	0.25	-	-	-	-	-	6.08	-	-	0.98	-	-	-	-	-	4.69	5.92	0.25	-	0.98
OS-17	0.77	-	-	-	-	-	-	-	-	-	-	-	-	-	-	-	-	-	0.77	0.77	-	-	-
OS-18	12.07	-	-	-	-	-	-	-	-	-	-	-	-	-	-	-	-	-	12.07	12.07	-	-	-
OS-19	1.00	-	-	-	-	-	-	-	-	-	-	-	-	-	-	-	-	-	1.00	1.00	-	-	-
OS-20	1.00	-	-	0.16	-	-	-	-	-	-	-	-	-	-	-	-	-	-	0.84	1.00	0.16	-	-
OS-21	10.84	-	-	0.31	-	-	-	-	-	-	-	-	-	-	-	-	-	-	10.53	10.84	0.31	-	-
OS-22	10.00	-	-	0.36	-	-	-	-	-	-	-	-	-	-	0.25	-	-	-	9.39	9.75	0.36	-	-
OS-23	12.14	-	-	0.16	-	-	-	-	-	2.70	-	-	-	-	-	-	-	-	9.27	9.44	0.16	-	-
OS-24	12.12	-	-	0.43	-	-	-	-	-	6.38	-	-	-	-	-	-	-	-	5.31	5.74	0.43	-	-
OS-25	45.51	-	-	1.22	-	3.50	1.34	1.00	-	13.32	-	-	1.00	-	-	-	6.04	-	18.10	21.31	1.22	2.00	-

PARCEL ID (OFFICER SOUTH (OS) – PARCEL NUMBER)	TOTAL AREA (HA)	ARTERIAL ROAD – EXISTING ROAD RESERVE	ARTERIAL ROAD – PUBLIC ACQUISITION OVERLAY	ARTERIAL ROAD – NEW / WIDENING / INTERSECTION FLARING (ICP LAND)	NON-ARTERIAL ROAD – RETAINED EXISTING ROAD RESERVE	GOVERNMENT SCHOOL	POTENTIAL NON- GOVERNMENT SCHOOL	ICP COMMUNITY FACILITIES	BCS CONSERVATION RESERVE	WATERWAY AND DRAINAGE RESERVE	UTILITIES EASEMENTS	LOCAL SPORTS RESERVE (ICP LAND)	LOCAL NETWORK PARK (ICP LAND)	UTILITIES SUB- STATIONS / FACILITIES (ACQUIRED BY RELEVANT AUTHORITY)	POTENTIAL GOVERNMENT FACILITY / EMERGENCY SERVICES	REDUNDANT ROAD RESERVE	WATERWAY AND DRAINAGE WITHIN CONSERVATION	EXISTING DEVELOPED LAND	TOTAL NET DEVELOPABLE AREA (HA)	TOTAL CONTRIBUTION LAND (HA)	TRANSPORT (HA)	RESIDENTIAL COMMUNITY & RECREATION (HA)	COMMERCIAL & INDUSTRIAL COMMUNITY AND RECREATION (HA)
OS-26	4.46	–	–	0.06	–	–	–	–	–	–	–	–	–	–	–	–	4.40	–	–	0.06	0.06	–	–
OS-28	78.81	0.00	–	3.54	–	–	–	–	1.35	2.74	–	–	1.00	–	–	–	3.45	–	66.74	71.27	3.54	–	1.00
OS-29	2.00	–	–	0.07	–	–	–	–	–	0.36	–	–	–	–	–	–	–	–	1.57	1.63	0.07	–	–
OS-30E	30.89	–	–	2.51	–	–	–	–	–	–	–	–	–	–	–	–	–	–	28.38	30.89	2.51	–	–
OS-30R	10.15	–	–	1.55	–	–	–	–	–	–	–	2.36	–	–	–	–	–	–	6.24	10.15	1.55	2.36	–
OS-31E	25.35	–	–	1.32	–	–	–	–	0.15	4.63	–	–	1.00	–	2.00	–	–	–	16.24	18.56	1.32	–	1.00
OS-31R	14.78	–	–	0.94	–	–	–	–	4.13	0.33	–	5.46	–	–	–	–	0.01	–	3.90	10.31	0.94	5.46	–
OS-32	127.44	–	–	0.25	–	–	–	–	0.41	20.64	3.36	–	1.00	–	–	–	11.31	–	90.47	91.72	0.25	–	1.00
OS-33	2.00	–	–	0.07	–	–	–	–	–	1.93	–	–	–	–	–	–	–	–	–	0.07	0.07	–	–
OS-34	2.00	–	–	0.19	–	–	–	–	–	1.81	–	–	–	–	–	–	–	–	0.00	0.19	0.19	–	–
OS-35	24.99	–	–	–	–	–	–	–	–	4.26	–	–	–	–	–	–	–	–	20.74	20.74	–	–	–
OS-36	76.64	–	2.96	7.45	–	–	–	–	–	–	2.46	–	1.20	–	–	–	–	–	62.57	71.23	7.45	–	1.20
OS-37	77.71	–	1.22	2.88	–	–	–	–	4.07	19.35	9.84	–	–	–	–	–	14.08	–	26.27	29.15	2.88	–	–
OS-38	8.57	–	–	–	–	–	–	–	–	2.54	–	–	–	–	–	–	6.03	–	–	–	–	–	–
OS-39	39.99	–	1.14	3.31	–	–	–	–	–	8.61	5.80	–	1.00	–	–	–	4.52	–	15.61	19.92	3.31	–	1.00
OS-40	6.89	–	0.20	1.32	–	–	–	–	–	–	–	–	0.47	–	–	–	–	–	4.90	6.69	1.32	–	0.47
OS-41	44.07	–	–	0.34	–	–	–	–	–	2.29	18.91	–	0.20	–	–	–	–	–	22.33	22.86	0.34	–	0.20
OS-42	1.69	–	–	–	–	–	–	–	–	–	–	–	–	–	–	–	–	–	1.69	1.69	–	–	–
OS-43	18.31	–	–	–	–	–	–	–	–	3.70	1.39	–	–	–	–	–	8.56	–	4.66	4.66	–	–	–
OS-44	35.14	–	–	–	–	–	–	–	–	–	–	–	1.00	–	–	–	–	–	34.14	35.14	–	–	1.00
OS-45	25.99	–	–	–	–	–	–	–	–	1.70	–	–	–	–	–	–	–	–	24.29	24.29	–	–	–
OS-46	17.64	–	–	–	–	–	–	–	–	0.72	–	–	–	–	–	–	–	–	16.93	16.93	–	–	–
OS-47	7.35	–	–	–	–	–	–	–	–	1.09	–	–	–	–	–	–	–	–	6.25	6.25	–	–	–
OS-48	60.71	–	–	–	–	–	–	–	–	16.48	–	–	1.00	2.00	–	–	–	–	41.24	42.24	–	–	1.00
OS-49	0.28	–	–	–	–	–	–	–	–	–	–	–	–	–	–	–	0.28	–	–	–	–	–	–
OS-50	0.19	–	–	–	–	–	–	–	–	–	–	–	–	–	–	–	0.19	–	–	–	–	–	–
OS-51	0.24	–	–	–	–	–	–	–	–	–	–	–	–	–	–	–	0.24	–	–	–	–	–	–

PARCEL ID (OFFICER SOUTH (OS) – PARCEL NUMBER)	TOTAL AREA (HA)	ARTERIAL ROAD – EXISTING ROAD RESERVE	ARTERIAL ROAD – PUBLIC ACQUISITION OVERLAY	ARTERIAL ROAD – NEW / WIDENING / INTERSECTION FLARING (ICP LAND)	NON-ARTERIAL ROAD – RETAINED EXISTING ROAD RESERVE	GOVERNMENT SCHOOL	POTENTIAL NON- GOVERNMENT SCHOOL	ICP COMMUNITY FACILITIES	BCS CONSERVATION RESERVE	WATERWAY AND DRAINAGE RESERVE	UTILITIES EASEMENTS	LOCAL SPORTS RESERVE (ICP LAND)	LOCAL NETWORK PARK (ICP LAND)	UTILITIES SUB- STATIONS / FACILITIES (ACQUIRED BY RELEVANT AUTHORITY)	POTENTIAL GOVERNMENT FACILITY / EMERGENCY SERVICES	REDUNDANT ROAD RESERVE	WATERWAY AND DRAINAGE WITHIN CONSERVATION	EXISTING DEVELOPED LAND	TOTAL NET DEVELOPABLE AREA (HA)	TOTAL CONTRIBUTION LAND (HA)	TRANSPORT (HA)	RESIDENTIAL COMMUNITY & RECREATION (HA)	COMMERCIAL & INDUSTRIAL COMMUNITY AND RECREATION (HA)
OS-52	0.01	–	–	–	–	–	–	–	–	–	–	–	–	–	–	–	0.01	–	–	–	–	–	–
OS-53	0.11	–	–	–	–	–	–	–	–	0.00	–	–	–	–	–	–	0.11	–	–	–	–	–	–
OS-54	0.27	–	–	–	–	–	–	–	–	0.07	–	–	–	–	–	–	0.20	–	–	–	–	–	–
OS-55	0.24	–	–	–	–	–	–	–	–	–	–	–	–	–	–	–	0.24	–	–	–	–	–	–
OS-56	0.27	–	–	–	–	–	–	–	–	0.05	–	–	–	–	–	–	0.22	–	–	–	–	–	–
OS-57	0.21	–	–	–	–	–	–	–	0.02	0.19	–	–	–	–	–	–	–	–	–	–	–	–	–
OS-58	0.40	–	–	–	–	–	–	–	0.01	0.12	–	–	–	–	–	–	0.27	–	–	–	–	–	–
OS-59	0.33	–	–	–	–	–	–	–	–	–	–	–	–	–	–	–	0.33	–	–	–	–	–	–
OS-60	0.02	–	–	–	–	–	–	–	–	0.00	–	–	–	–	–	–	0.02	–	–	–	–	–	–
Sub- Total	1,048.42	0.00	6.62	29.97	–	3.50	3.00	1.00	13.82	133.88	41.76	7.82	13.88	2.00	2.25	–	95.40	3.74	689.79	742.46	29.97	11.32	11.38
OS-R1	7.60	4.45	–	–	0.00	–	–	–	–	0.02	0.41	–	–	–	–	–	–	–	2.73	2.73	–	–	–
OS-R2	5.05	3.77	–	–	–	–	–	–	–	0.19	–	–	–	–	–	–	0.44	–	0.65	0.65	–	–	–
OS-R3	2.67	0.04	–	–	–	–	–	–	0.30	–	0.62	–	–	–	–	1.66	0.05	–	–	–	–	–	–
OS-R4	1.82	–	–	–	1.82	–	–	–	–	–	–	–	–	–	–	–	–	–	–	–	–	–	–
OS-R5	1.55	–	–	–	1.55	–	–	–	–	–	–	–	–	–	–	–	–	–	–	–	–	–	–
OS-R6	1.65	–	–	–	1.50	–	–	–	–	0.05	–	–	–	–	–	–	0.10	–	–	–	–	–	–
Sub- Total	20.34	8.26	–	–	4.87	–	–	–	0.30	0.26	1.02	–	–	–	–	1.66	0.59	–	3.37	3.37	–	–	–

Note: An application to use or develop OS-04 in connection with its current use as a Freeway Service Centre is exempt from Infrastructure contribution levies.

Appendix 3 Designs

Hosted on the VPA website, see the following links:

[Officer South \(Employment\) ICP – Appendix 3 Part 1](#)

[Officer South \(Employment\) ICP – Appendix 3 Part 2](#)

[Officer South \(Employment\) ICP – Appendix 3 Part 3](#)

[Officer South \(Employment\) ICP – Appendix 3 Part 4](#)

[Officer South \(Employment\) ICP – Appendix 3 Part 5](#)

[Officer South \(Employment\) ICP – Cost Estimates Report July 2024](#)

Officer South (Employment)

BUNURONG COUNTRY

Infrastructure Contributions Plan

NOVEMBER 2024